

STATE OF ILLINOIS
DEPARTMENT OF TRANSPORTATION

ROUTE NO.	SECTION	COUNTY	SHEET NO.	SHEET NO.
F.A.I. 39	50-4B	LASALLE	23	313 SHEETS
FED. ROAD DIST. NO. 7		ILLINOIS FED. AID PROJECT		Contract # 66586

SPECIFICATIONS

AASHTO Standard Specifications for Highway Bridges, 17th Edition 2002.

DESIGN METHOD

Strength Design Method (Load Factor Design Method)

DESIGN LOADINGS

Dead Loads:

Future wearing surface - 25 psf

Live Loads:

- A. AASHTO HS20-44 plus Impact
- B. Alternate Military Loading

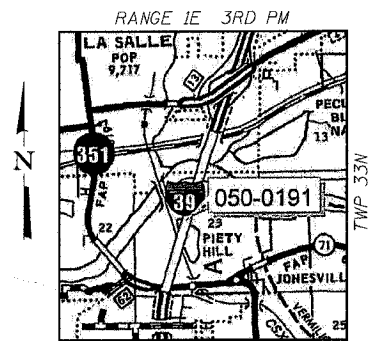
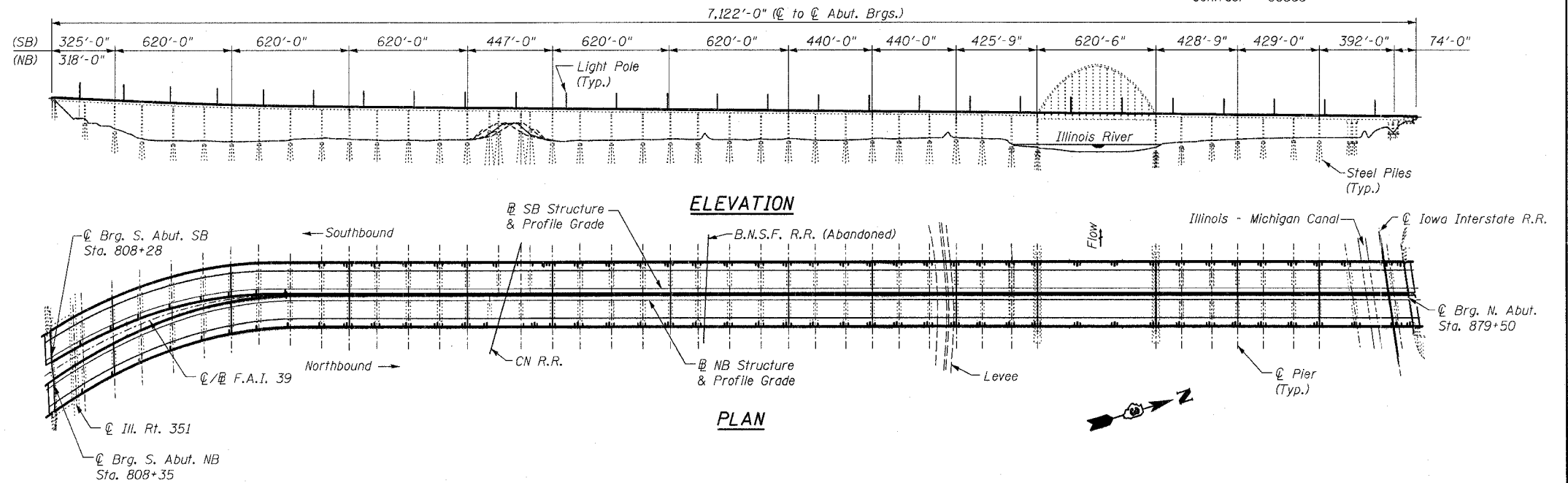
Seismic Loads:

In Accordance with AASHTO Seismic Performance Category A:

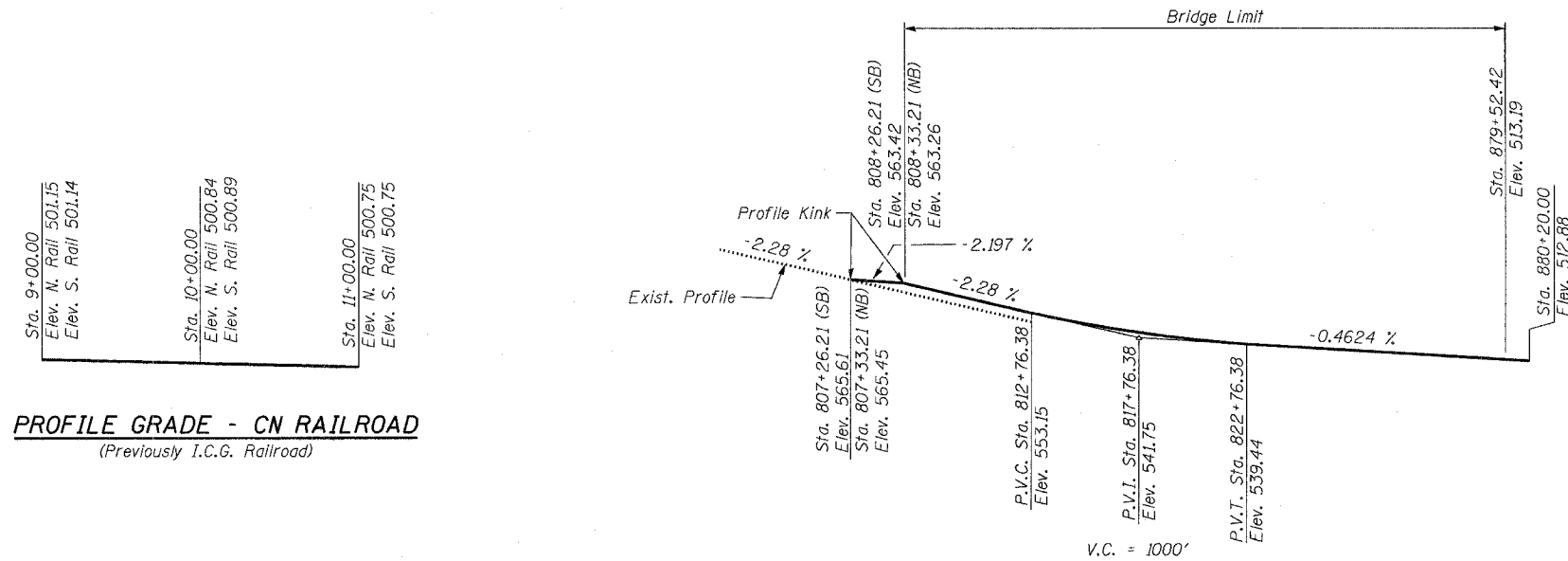
A = 0.04
S = 1.0

DESIGN STRESSES

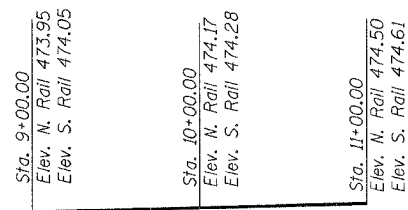
- f'c = 3,500 psi
- fy = 36,000 psi (Grade 36 Existing)
- fy = 50,000 psi (Grade 50 Existing)
- fy = 36,000 psi (Grade 36 New)
- fy = 50,000 psi (Grade 50 New)
- fy = 60,000 psi (Reinforcement)



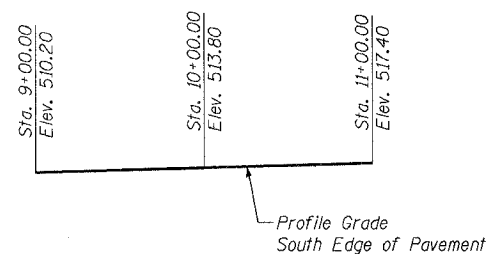
LOCATION SKETCH



PROFILE GRADE - CN RAILROAD
(Previously I.C.G. Railroad)



PROFILE GRADE - IOWA INTERSTATE RAILROAD
(Previously Chicago Rock Island & Pacific Railroad)



PROFILE GRADE ILL. - 351

PROFILE GRADE
(Proposed)

DESIGNED -	MRB
CHECKED -	HMA
DRAWN -	VH
CHECKED -	HMA

benesch

alfred benesch & company
Engineers • Surveyors • Planners
205 North Michigan Avenue, Suite 2400
Chicago, Illinois 60601
312-565-0450
Job # 3856

KEY PLAN, CRITERIA AND PROFILES
ABRAHAM LINCOLN MEMORIAL BRIDGE OVER
THE ILLINOIS RIVER (PUBLIC WATERS)

F.A.I. ROUTE 39 SEC. (50-4B) BR

LASALLE COUNTY

STATION 863+16.00

STRUCTURE NO. 050-0191 (SB & NB)