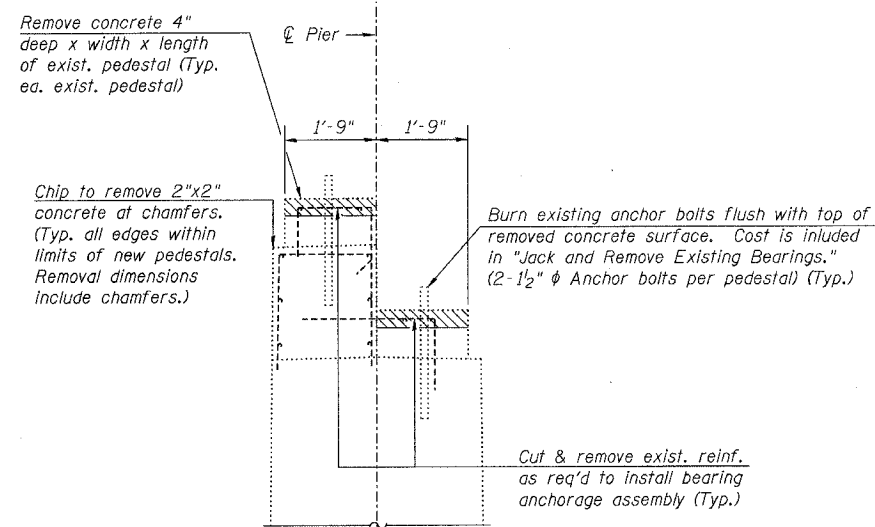


STATE OF ILLINOIS
DEPARTMENT OF TRANSPORTATION

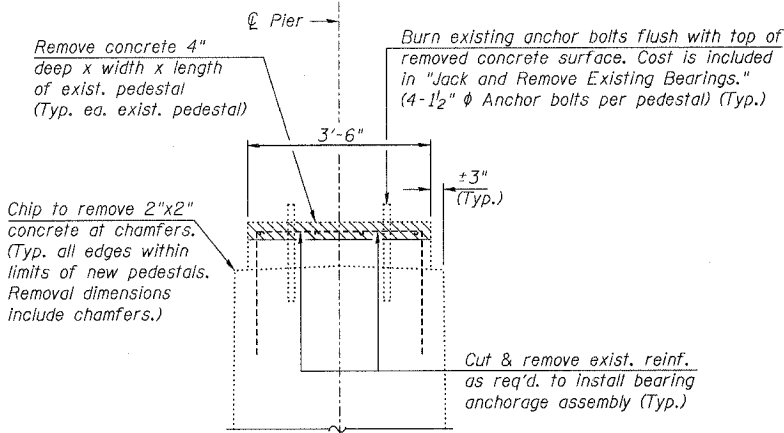
ROUTE NO.	SECTION	COUNTY	DATE	SHEET	SHEET NO.
F.A.I. 39	50-4B	LASALLE		41	313 SHEETS
FED. ROAD DIST. NO. 7	ILLINOIS	FED. AID PROJECT			

Contract # 66586



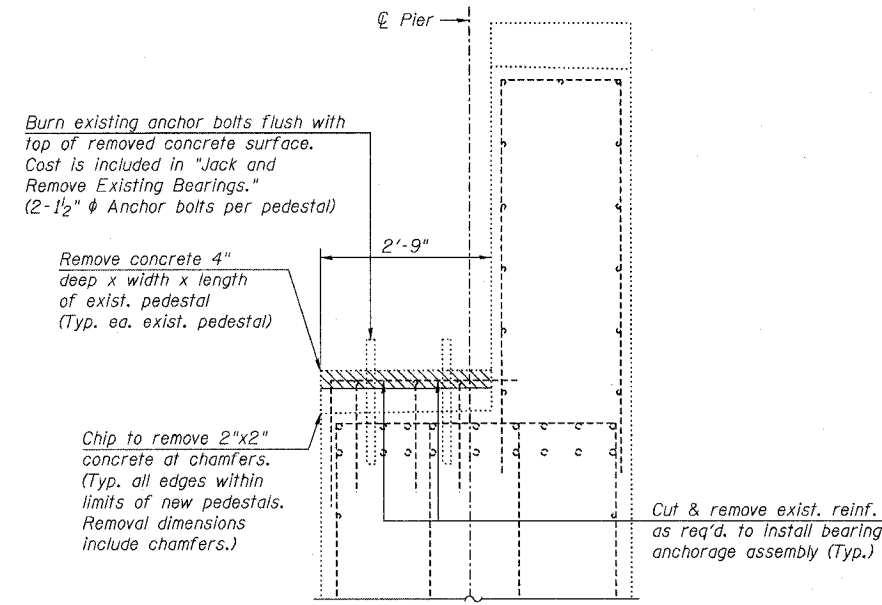
PIER 41

Dimension of existing pedestals in direction perpendicular to roadway is 3'-0".



PIERS 2, 6, 10, 14, 17, 21, 25, 28, 31, 38

Dimension of existing pedestals in direction perpendicular to roadway is 3'-0".

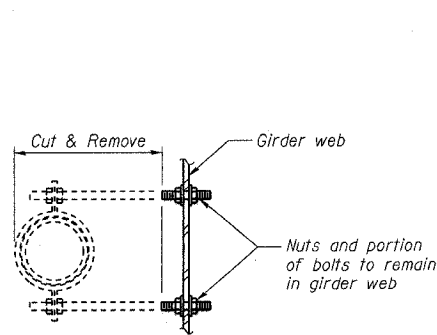


PIER 43

Dimension of existing pedestals in direction perpendicular to roadway is 3'-4".

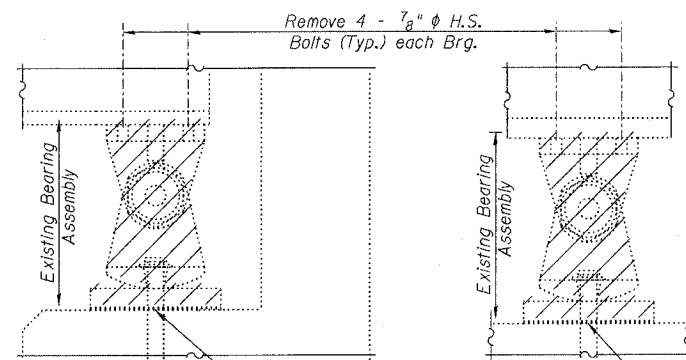
PARTIAL REMOVAL OF EXISTING BEARING PEDESTALS

Indicates concrete removal



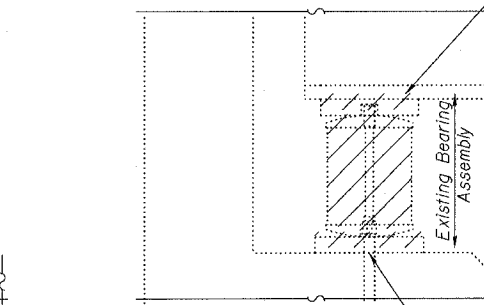
FLOOR DRAIN REMOVAL

Cost included with "Removal of Existing Concrete Deck"



AT SOUTH ABUTMENT

Burn existing anchor bolts flush with top of existing concrete surface. Cost is included in "Jack and Remove Existing Bearings." (2-1/2" ϕ Anchor bolts per pedestal)



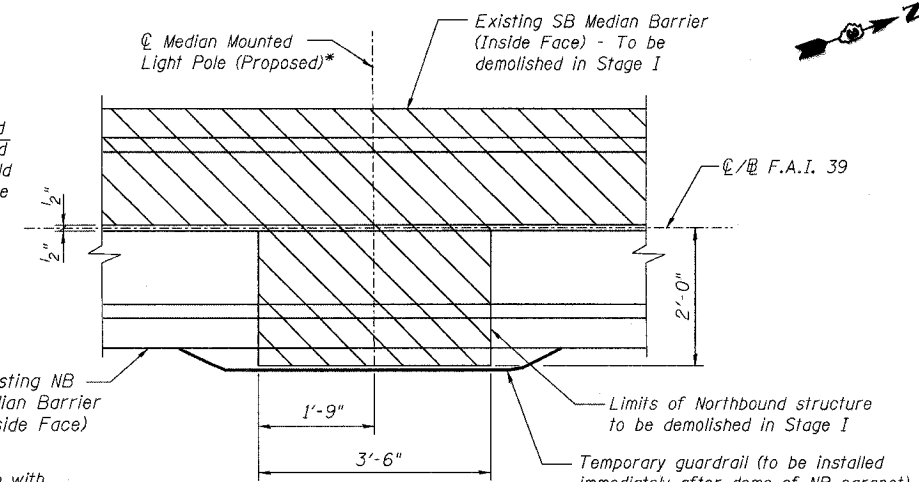
AT PIERS

Burn existing anchor bolts flush with top of existing concrete surface at Piers 34 and 35. Cost is included in "Jack and Remove Existing Bearings." (2-1/2" ϕ Anchor bolts per pedestal)

AT NORTH ABUTMENT

Top Plate to be removed using the air-arc method and grind smooth all weld material remaining on the bottom flange.

Burn existing anchor bolts flush with top of existing concrete surface. Cost is included in "Jack and Remove Existing Bearings." (2-1/2" ϕ Anchor bolts per pedestal)



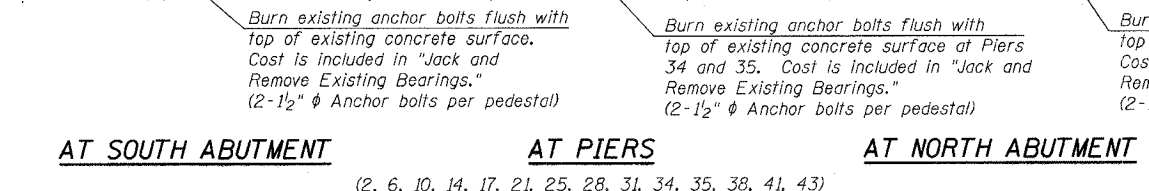
STAGE I REMOVAL DETAIL

Cost included with "Removal of Existing Concrete Deck"

* For locations of Median Mounted Light Poles see sheet 169.

REMOVAL OF EXISTING EXPANSION BEARINGS

Indicates bearing removal



NOTES:

- See Sheets 213 thru 215 for new bearing details.
- For Jacking and Cribbing see special provisions "Jack and Remove Existing Bearings".
- See Pedestal sheets for quantity of Concrete Removal.
- Cost of temporary guardrail shall be included with "Removal of Existing Concrete Deck"

DESIGNED	DLS
CHECKED	STD
DRAWN	KHH
CHECKED	MTH

**MISCELLANEOUS REMOVAL
ABRAHAM LINCOLN MEMORIAL BRIDGE OVER
THE ILLINOIS RIVER (PUBLIC WATERS)**

F.A.I. ROUTE 39 SEC. (50-4B) BR
LASALLE COUNTY
STATION 863+16.00
STRUCTURE NO. 050-0191 (SB & NB)

LIN ENGINEERING, LTD.
210 W. Chestnut
Chatham, Illinois 62629
(217) 483-4168
FAX (217) 483-4706

benesch
alfred benesch & company
Engineers - Surveyors - Planners
205 North Michigan Avenue, Suite 2400
Chicago, Illinois 60601
312-965-0450
Job # 3856

x:\3800s\3856\structures\abe lincoln memorial\find\plans\From Lin\Bearing Removal\bearing removal.sht

10:07:28 AM

8/30/2006