

STATE OF ILLINOIS  
DEPARTMENT OF TRANSPORTATION

ROUTE NO.	SECTION	COUNTY	TOTAL SHEETS	SHEET	SHEET NO. 116 313 SHEETS
F.A.I. 39	50-4B	LASALLE		138	
FED. ROAD DIST. NO. 7	ILLINOIS	FED. AID PROJECT			

Contract # 66586

**BILL OF MATERIAL**  
(Southbound Deck)

Bar	No.	Size	Length	Shape
a(E)	2110	#5	42'-6"	—
a1(E)	1238	#6	4'-6"	—
a2(E)	48	#5	2'-0"	—
a3(E)	42	#6	5'-0"	—
a4(E)	56	#6	2'-6"	—
a5(E)	5	#6	8'-0"	—
b3(E)	4	#5	2'-3"	—
b80(E)	1012	#5	30'-6"	—
b81(E)	874	#5	29'-3"	—
b82(E)	258	#6	32'-9"	—
b83(E)	129	#6	28'-9"	—
d(E)	1032	#4	3'-4"	┌
d1(E)	1344	#5	2'-5"	└
d2(E)	312	#4	3'-5"	┌
d8(E)	5	#5	5'-5"	└
x(E)	80	#5	4'-1"	└
<b>Item</b>	<b>Unit</b>	<b>Total</b>		
Reinforcement Bars, Epoxy Coated	Pound	186,480		
Concrete Superstructure	Cu. Yd.	739.4		
Bridge Deck Grooving	Sq. Yd.	2,609		
Protective Coat	Sq. Yd.	2,747		

**BILL OF MATERIAL**  
(Southbound Parapets)

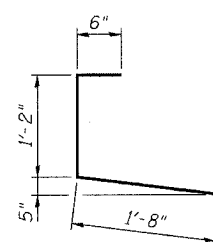
Bar	No.	Size	Length	Shape
d3(E)	1344	#4	3'-0"	┌
d4(E)	1347	#5	3'-0"	┌
d5(E)	3	#6	4'-5"	└
d6(E)	10	#6	8'-11"	└
e10(E)	3	#4	2'-3"	—
e11(E)	1	#8	2'-3"	—
e12(E)	1	#5	2'-3"	—
e14(E)	8	#5	6'-0"	—
e80(E)	144	#4	19'-3"	—
e81(E)	32	#8	33'-0"	—
e82(E)	32	#5	31'-0"	—
e83(E)	144	#4	19'-0"	—
e84(E)	32	#8	32'-3"	—
e85(E)	32	#5	30'-6"	—
e87(E)	24	#4	21'-9"	—
e88(E)	8	#8	21'-9"	—
e89(E)	8	#5	21'-9"	—
e90(E)	96	#4	13'-9"	—
e91(E)	16	#8	27'-9"	—
e92(E)	16	#5	27'-9"	—
<b>Item</b>	<b>Unit</b>	<b>Total</b>		
Reinforcement Bars, Epoxy Coated	Pound	21,960		
Concrete Superstructure	Cu. Yd.	142.5		
Protective Coat	Sq. Yd.	528		

**BILL OF MATERIAL**  
(Northbound Deck)

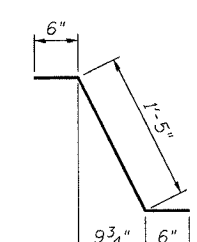
Bar	No.	Size	Length	Shape
a(E)	2103	#5	42'-6"	—
a1(E)	1234	#6	4'-6"	—
a2(E)	24	#5	2'-0"	—
a3(E)	6	#6	5'-0"	—
a4(E)	8	#6	2'-6"	—
b3(E)	4	#5	2'-3"	—
b100(E)	1012	#5	30'-3"	—
b101(E)	874	#5	29'-0"	—
b102(E)	258	#6	32'-9"	—
b103(E)	129	#6	28'-9"	—
d(E)	1032	#4	3'-4"	┌
d1(E)	1343	#5	2'-5"	└
d2(E)	311	#4	3'-5"	┌
x(E)	80	#5	4'-1"	└
<b>Item</b>	<b>Unit</b>	<b>Total</b>		
Reinforcement Bars, Epoxy Coated	Pound	185,060		
Concrete Superstructure	Cu. Yd.	737.1		
Bridge Deck Grooving	Sq. Yd.	2,602		
Protective Coat	Sq. Yd.	2,740		

**BILL OF MATERIAL**  
(Northbound Parapets)

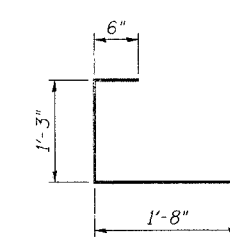
Bar	No.	Size	Length	Shape
d3(E)	1343	#4	3'-0"	┌
d4(E)	1343	#5	3'-0"	┌
d5(E)	3	#6	4'-5"	└
d6(E)	5	#6	8'-11"	└
e14(E)	12	#5	6'-0"	—
e80(E)	108	#4	19'-3"	—
e81(E)	32	#8	32'-9"	—
e82(E)	32	#5	31'-0"	—
e83(E)	144	#4	19'-0"	—
e84(E)	32	#8	32'-3"	—
e85(E)	32	#5	30'-6"	—
e86(E)	36	#4	18'-9"	—
e87(E)	24	#4	21'-9"	—
e88(E)	8	#8	21'-9"	—
e89(E)	8	#5	21'-9"	—
e90(E)	96	#4	13'-9"	—
e91(E)	16	#8	27'-9"	—
e92(E)	16	#5	27'-9"	—
<b>Item</b>	<b>Unit</b>	<b>Total</b>		
Reinforcement Bars, Epoxy Coated	Pound	21,860		
Concrete Superstructure	Cu. Yd.	141.4		
Protective Coat	Sq. Yd.	527		



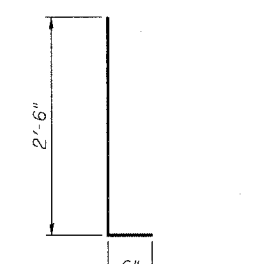
BAR d(E)



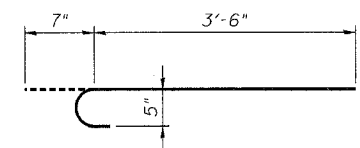
BAR d1(E)



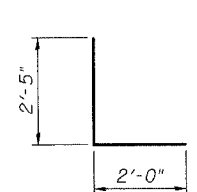
BAR d2(E)



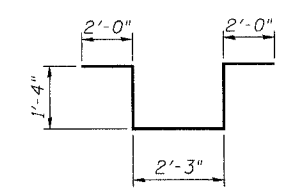
BARS d3(E) & d4(E)



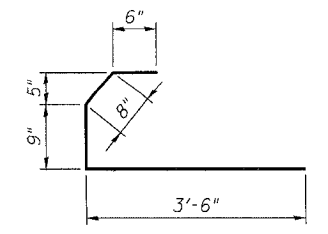
BAR x(E)



BAR d5(E)



BAR d6(E)



BAR d8(E)

- NOTES:**
1. Reinforcement bars designated (E) shall be epoxy coated.
  2. All bar dimensions are out to out.

**BILL OF MATERIAL - SPANS 7 THRU 10**  
**ABRAHAM LINCOLN MEMORIAL BRIDGE OVER**  
**THE ILLINOIS RIVER (PUBLIC WATERS)**  
**F.A.I. ROUTE 39 SEC. (50-4B) BR**  
**LASALLE COUNTY**  
**STATION 863+16.00**  
**STRUCTURE NO. 050-0191 (SB & NB)**

**benesch**  
alfred benesch & company  
Engineers • Surveyors • Planners  
205 North Michigan Avenue, Suite 2400  
Chicago, Illinois 60601  
312-565-0450  
Job # 3656

8/30/2006 9:02:03 AM x:\3800s\3856\structures\abe lincoln memorial\final\plans\al\_dk\bm070.sht