

STATE OF ILLINOIS
DEPARTMENT OF TRANSPORTATION

ROUTE NO. F.A.I. 39	SECTION 50-4B	COUNTY LASALLE	TOTAL SHEETS 172	SHEET NO. 150
FED. ROAD DIST. NO. 7		ILLINOIS FED. AID PROJECT		

Contract # 66586

BILL OF MATERIAL
(Southbound Deck)

Bar	No.	Size	Length	Shape
a(E)	1455	#5	42'-6"	—
a1(E)	854	#6	4'-6"	—
a2(E)	16	#5	2'-0"	—
a3(E)	6	#6	5'-0"	—
a4(E)	8	#6	2'-6"	—
a5(E)	10	#6	8'-0"	—
b3(E)	8	#5	2'-3"	—
b440(E)	690	#5	30'-6"	—
b441(E)	608	#5	28'-9"	—
b442(E)	258	#6	29'-6"	—
d(E)	474	#4	3'-4"	┌
d1(E)	948	#5	2'-5"	└
d2(E)	474	#4	3'-5"	┌
d8(E)	10	#5	5'-5"	┌
d99(E)	570	#5	3'-6"	└
x(E)	80	#5	4'-1"	└
Item	Unit	Total		
Reinforcement Bars, Epoxy Coated	Pound	129,140		
Concrete Superstructure	Cu. Yd.	509.7		
Bridge Deck Grooving	Sq. Yd.	1,797		
Protective Coat	Sq. Yd.	1,891		

BILL OF MATERIAL
(Southbound Parapets)

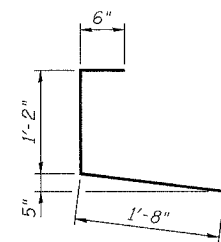
Bar	No.	Size	Length	Shape
d3(E)	948	#4	3'-0"	┌
d4(E)	954	#5	3'-0"	┌
d6(E)	10	#6	8'-11"	└
e10(E)	6	#4	2'-3"	—
e11(E)	2	#8	2'-3"	—
e12(E)	2	#5	2'-3"	—
e14(E)	24	#5	6'-0"	—
e440(E)	72	#4	18'-3"	—
e441(E)	32	#8	31'-9"	—
e442(E)	32	#5	30'-0"	—
e443(E)	48	#4	21'-9"	—
e444(E)	16	#8	21'-9"	—
e445(E)	16	#5	21'-9"	—
e446(E)	72	#4	19'-0"	—
e447(E)	16	#8	32'-3"	—
e448(E)	16	#5	30'-6"	—
e449(E)	72	#4	18'-6"	—
Item	Unit	Total		
Reinforcement Bars, Epoxy Coated	Pound	15,470		
Concrete Superstructure	Cu. Yd.	102.1		
Protective Coat	Sq. Yd.	370		

BILL OF MATERIAL
(Northbound Deck)

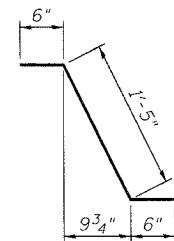
Bar	No.	Size	Length	Shape
a(E)	1455	#5	42'-6"	—
a1(E)	854	#6	4'-6"	—
a2(E)	16	#5	2'-0"	—
a3(E)	6	#6	5'-0"	—
a4(E)	8	#6	2'-6"	—
b3(E)	8	#5	2'-3"	—
b440(E)	690	#5	30'-6"	—
b441(E)	608	#5	28'-9"	—
b442(E)	258	#6	29'-6"	—
d(E)	474	#4	3'-4"	┌
d1(E)	944	#5	2'-5"	└
d2(E)	470	#4	3'-5"	┌
d99(E)	570	#5	3'-6"	└
x(E)	80	#5	4'-1"	└
Item	Unit	Total		
Reinforcement Bars, Epoxy Coated	Pound	128,940		
Concrete Superstructure	Cu. Yd.	509.2		
Bridge Deck Grooving	Sq. Yd.	1,797		
Protective Coat	Sq. Yd.	1,891		

BILL OF MATERIAL
(Northbound Parapets)

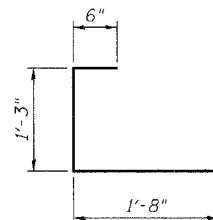
Bar	No.	Size	Length	Shape
d3(E)	944	#4	3'-0"	┌
d4(E)	944	#5	3'-0"	┌
e14(E)	8	#5	6'-0"	—
e440(E)	72	#4	18'-3"	—
e441(E)	32	#8	31'-9"	—
e442(E)	32	#5	30'-0"	—
e443(E)	48	#4	21'-9"	—
e444(E)	16	#8	21'-9"	—
e445(E)	16	#5	21'-9"	—
e446(E)	72	#4	19'-0"	—
e447(E)	16	#8	32'-3"	—
e448(E)	16	#5	30'-6"	—
e449(E)	72	#4	18'-6"	—
Item	Unit	Total		
Reinforcement Bars, Epoxy Coated	Pound	15,170		
Concrete Superstructure	Cu. Yd.	100.7		
Protective Coat	Sq. Yd.	370		



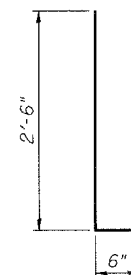
BAR d(E)



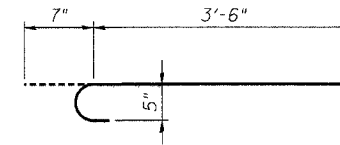
BAR d1(E)



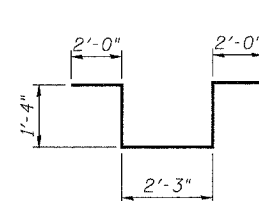
BAR d2(E)



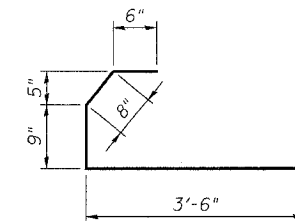
BARS d3(E) & d4(E)



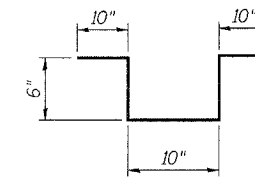
BAR x(E)



BAR d6(E)



BAR d8(E)



BAR d99(E)

NOTES:

1. Reinforcement bars designated (E) shall be epoxy coated.
2. All bar dimensions are out to out.

**BILL OF MATERIAL - SPANS 36 THRU 38
ABRAHAM LINCOLN MEMORIAL BRIDGE OVER
THE ILLINOIS RIVER (PUBLIC WATERS)
F.A.I. ROUTE 39 SEC. (50-4B) BR
LASALLE COUNTY
STATION 863+16.00
STRUCTURE NO. 050-0191 (SB & NB)**

benesch

alfred benesch & company
Engineers • Surveyors • Planners
205 North Michigan Avenue, Suite 2400
Chicago, Illinois 60601
312-365-0450
Job # 3856

DESIGNED -	AJK
CHECKED -	KWS
DRAWN -	VH
CHECKED -	MRB

xx:\3800s\3856\structures\abe lincoln memorial\final\plans\AL-dk\bm3638.sht

3:04:52 PM

10/16/2006