

STATE OF ILLINOIS
DEPARTMENT OF TRANSPORTATION

ROUTE NO. F.A.I. 39	SECTION 50-4B	COUNTY LASALLE	SHEET NO. 175	SHEET NO. 153 313 SHEETS
FED. ROAD DIST. NO. 7		ILLINOIS FED. AID PROJECT-		

Contract # 66586

BILL OF MATERIAL
(Southbound Deck)

Bar	No.	Size	Length	Shape
a(E)	1457	#5	42'-6"	—
a1(E)	854	#6	4'-6"	—
a2(E)	16	#5	2'-0"	—
a3(E)	6	#6	5'-0"	—
a4(E)	8	#6	2'-6"	—
a5(E)	5	#6	8'-0"	—
b3(E)	4	#5	2'-3"	—
b480(E)	690	#5	30'-6"	—
b481(E)	608	#5	28'-9"	—
b482(E)	258	#6	29'-6"	—
d(E)	474	#4	3'-4"	┌
d1(E)	948	#5	2'-5"	└
d2(E)	474	#4	3'-5"	┌
d8(E)	5	#5	5'-5"	┌
d99(E)	570	#5	3'-6"	└
x(E)	80	#5	4'-1"	└
Item	Unit	Total		
Reinforcement Bars, Epoxy Coated	Pound	129,130		
Concrete Superstructure	Cu. Yd.	511.0		
Bridge Deck Grooving	Sq. Yd.	1,801		
Protective Coat	Sq. Yd.	1,896		

BILL OF MATERIAL
(Southbound Parapets)

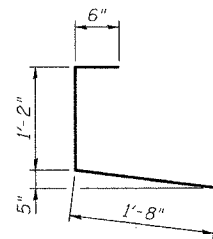
Bar	No.	Size	Length	Shape
d3(E)	948	#4	3'-0"	┌
d4(E)	951	#5	3'-0"	┌
d6(E)	5	#6	8'-11"	└
e10(E)	3	#4	2'-3"	—
e11(E)	1	#8	2'-3"	—
e12(E)	1	#5	2'-3"	—
e14(E)	16	#5	6'-0"	—
e480(E)	144	#4	18'-6"	—
e481(E)	32	#8	31'-9"	—
e482(E)	32	#5	30'-0"	—
e483(E)	48	#4	21'-9"	—
e484(E)	16	#8	21'-9"	—
e485(E)	16	#5	21'-9"	—
e486(E)	72	#4	19'-0"	—
e487(E)	16	#8	32'-3"	—
e488(E)	16	#5	30'-6"	—
Item	Unit	Total		
Reinforcement Bars, Epoxy Coated	Pound	15,340		
Concrete Superstructure	Cu. Yd.	102.1		
Protective Coat	Sq. Yd.	371		

BILL OF MATERIAL
(Northbound Deck)

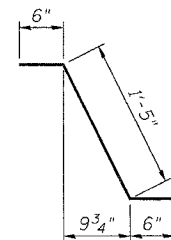
Bar	No.	Size	Length	Shape
a(E)	1457	#5	42'-6"	—
a1(E)	854	#6	4'-6"	—
a2(E)	16	#5	2'-0"	—
a3(E)	6	#6	5'-0"	—
a4(E)	8	#6	2'-6"	—
b3(E)	4	#5	2'-3"	—
b480(E)	690	#5	30'-6"	—
b481(E)	608	#5	28'-9"	—
b482(E)	258	#6	29'-6"	—
d(E)	474	#4	3'-4"	┌
d1(E)	947	#5	2'-5"	└
d2(E)	473	#4	3'-5"	┌
d99(E)	570	#5	3'-6"	└
x(E)	80	#5	4'-1"	└
Item	Unit	Total		
Reinforcement Bars, Epoxy Coated	Pound	129,040		
Concrete Superstructure	Cu. Yd.	510.7		
Bridge Deck Grooving	Sq. Yd.	1,801		
Protective Coat	Sq. Yd.	1,896		

BILL OF MATERIAL
(Northbound Parapets)

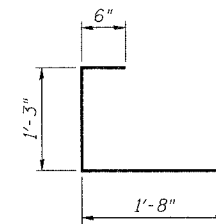
Bar	No.	Size	Length	Shape
d3(E)	947	#4	3'-0"	┌
d4(E)	947	#5	3'-0"	┌
e14(E)	8	#5	6'-0"	—
e480(E)	144	#4	18'-6"	—
e481(E)	32	#8	31'-9"	—
e482(E)	32	#5	30'-0"	—
e483(E)	48	#4	21'-9"	—
e484(E)	16	#8	21'-9"	—
e485(E)	16	#5	21'-9"	—
e486(E)	72	#4	19'-0"	—
e487(E)	16	#8	32'-3"	—
e488(E)	16	#5	30'-6"	—
Item	Unit	Total		
Reinforcement Bars, Epoxy Coated	Pound	15,200		
Concrete Superstructure	Cu. Yd.	101.4		
Protective Coat	Sq. Yd.	371		



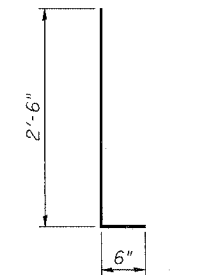
BAR d(E)



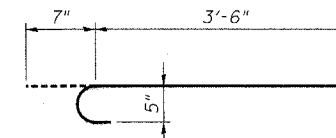
BAR d1(E)



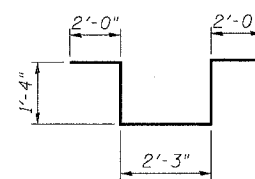
BAR d2(E)



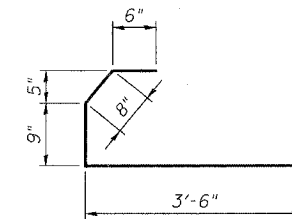
BARS d3(E) & d4(E)



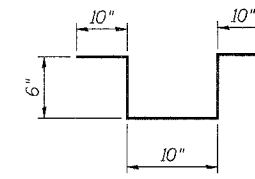
BAR x(E)



BAR d6(E)



BAR d8(E)



BAR d99(E)

NOTES:

1. Reinforcement bars designated (E) shall be epoxy coated.
2. All bar dimensions are out to out.

**BILL OF MATERIAL - SPANS 39 THRU 41
ABRAHAM LINCOLN MEMORIAL BRIDGE OVER
THE ILLINOIS RIVER (PUBLIC WATERS)
F.A.I. ROUTE 39 SEC. (50-4B) BR
LASALLE COUNTY
STATION 863+16.00
STRUCTURE NO. 050-0191 (SB & NB)**

benesch

alfred benesch & company
Engineers • Surveyors • Planners
205 North Michigan Avenue, Suite 2400
Chicago, Illinois 60601
312-565-0450
Job # 3856

DESIGNED -	HAA
CHECKED -	MRB
DRAWN -	VH
CHECKED -	KWS

xl:\3800s\3856\structures\abe lincoln memorial\final\plans\al...dkbm3941.sht

3:01:53 PM

10/16/2006