

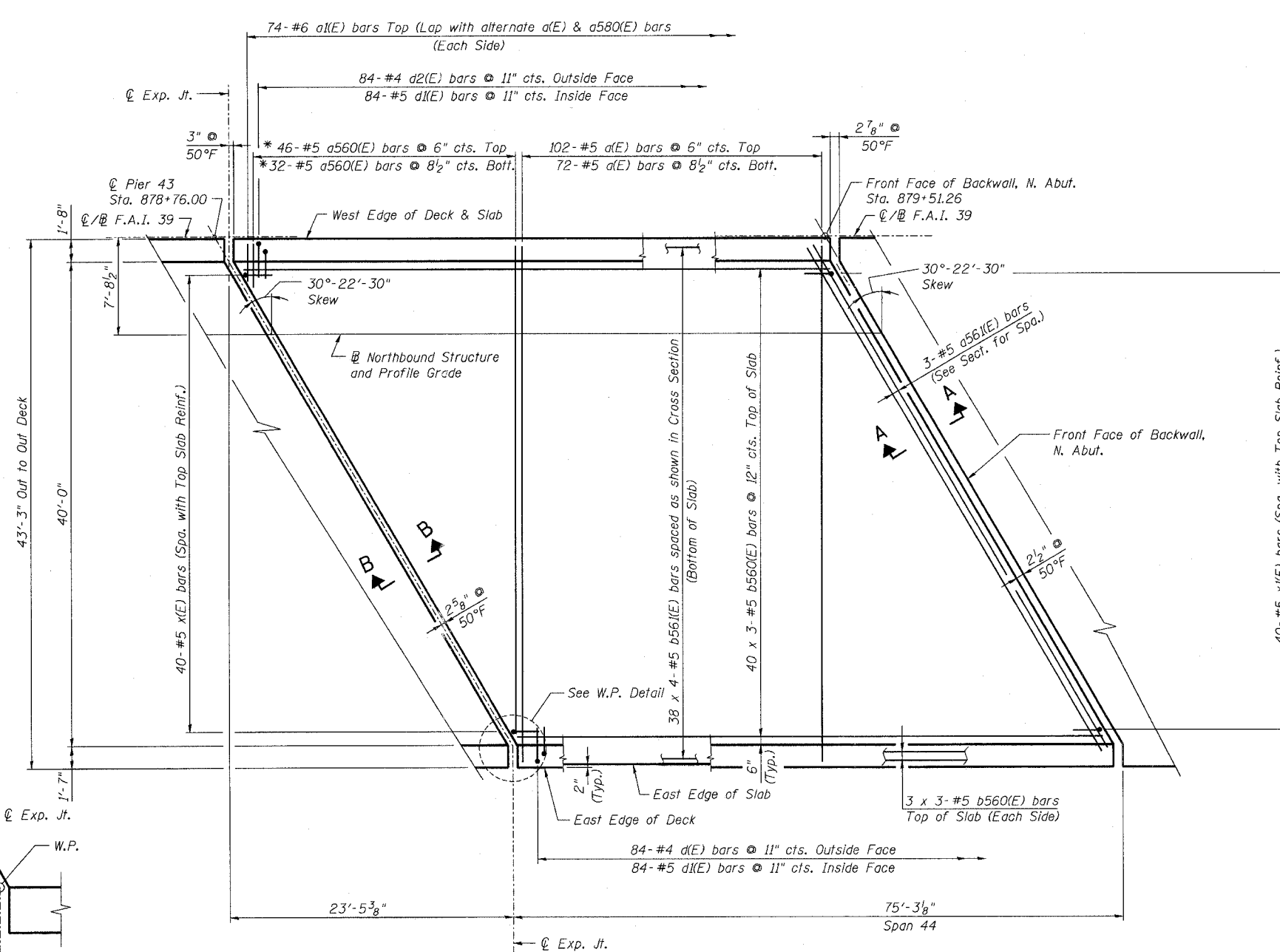
STATE OF ILLINOIS
DEPARTMENT OF TRANSPORTATION

ROUTE NO.	SECTION	COUNTY	TOTAL SHEETS	SHEET NO.
F.A.I. 39	50-4B	LASALLE	182	313 SHEETS
FED. ROAD DIST. NO. 7	ILLINOIS	FED. AID PROJECT		

Contract # 66586

BILL OF MATERIAL
(Northbound Deck)

Bar	No.	Size	Length	Shape
a(E)	174	#5	42'-6"	—
a1(E)	148	#6	4'-6"	—
a2(E)	8	#5	2'-0"	—
a560(E)	78	#5	42'-0"	—
a561(E)	3	#5	48'-0"	—
b560(E)	138	#5	26'-3"	—
b561(E)	152	#5	20'-3"	—
d(E)	84	#4	3'-4"	┌
d1(E)	168	#5	2'-5"	┌
d2(E)	84	#4	3'-5"	┌
x(E)	40	#5	4'-1"	┌
x1(E)	40	#5	4'-1"	┌
Item	Unit	Total		
Reinforcement Bars, Epoxy Coated	Pound	20,430		
Concrete Superstructure	Cu. Yd.	90.0		
Bridge Deck Grooving	Sq. Yd.	314		
Protective Coat	Sq. Yd.	330		

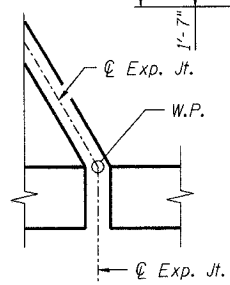
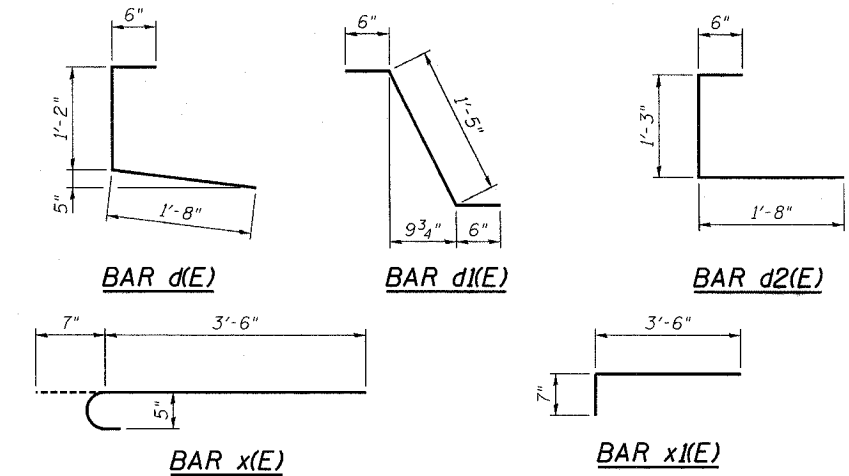


PLAN

NOTES:
1. For Notes see sheet 159.

* Order bars full length. Cut to fit skew & use remainder of bars in opposite end.

MINIMUM BAR LAP
(Slab)
#5 bar = 2'-2"
#6 bar = 2'-7"



W.P. DETAIL

DESIGNED -	HAA
CHECKED -	MRB
DRAWN -	VH
CHECKED -	KWS

benesch
alfred benesch & company
Engineers - Surveyors - Planners
205 North Michigan Avenue, Suite 2400
Chicago, Illinois 60601
312-565-0450
Job # 3856

DECK PLAN - SPAN 44 NB
ABRAHAM LINCOLN MEMORIAL BRIDGE OVER
THE ILLINOIS RIVER (PUBLIC WATERS)
F.A.I. ROUTE 39 SEC. (50-4B) BR
LASALLE COUNTY
STATION 863+16.00
STRUCTURE NO. 050-0191 (SB & NB)

x:\3800s\3856\structures\abe lincoln memorial\final\plans\AL_dkpl30.sht
9:03:35 AM
8/30/2006