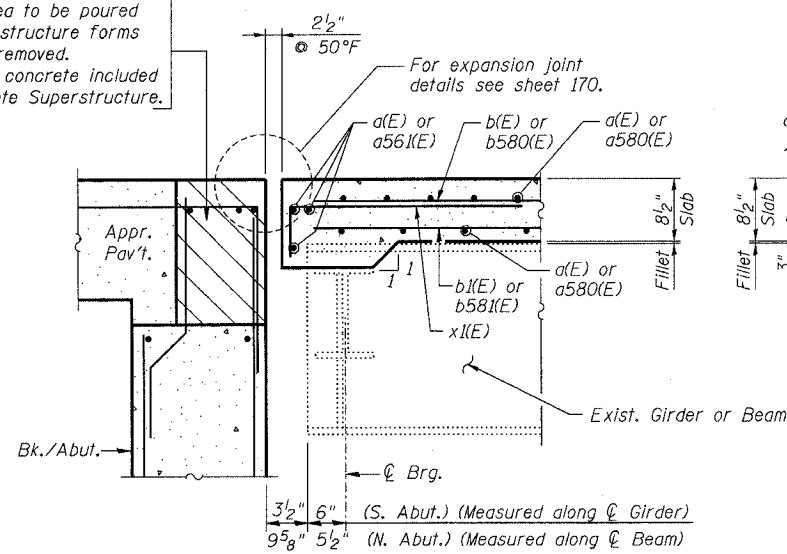


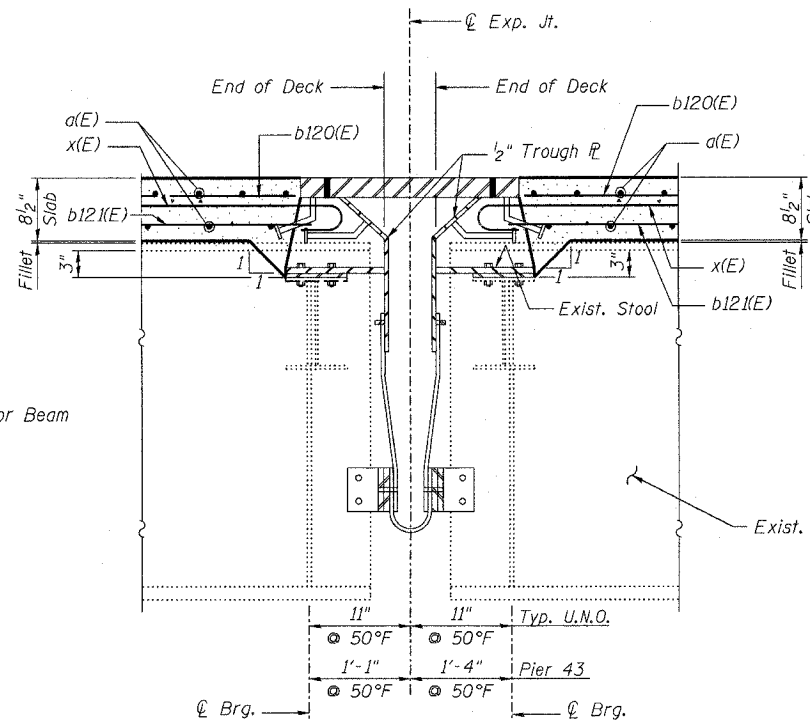
STATE OF ILLINOIS
DEPARTMENT OF TRANSPORTATION

ROUTE NO.	SECTION	COUNTY	SHEETS	SHEET	SHEET NO. 167
F.A.I. 39	50-4B	LASALLE		190	313 SHEETS
FED. ROAD DIST. NO. 7	ILLINOIS	FED. AID PROJECT-	Contract # 66586		

Hatched area to be poured after superstructure forms have been removed. Quantity of concrete included with Concrete Superstructure.

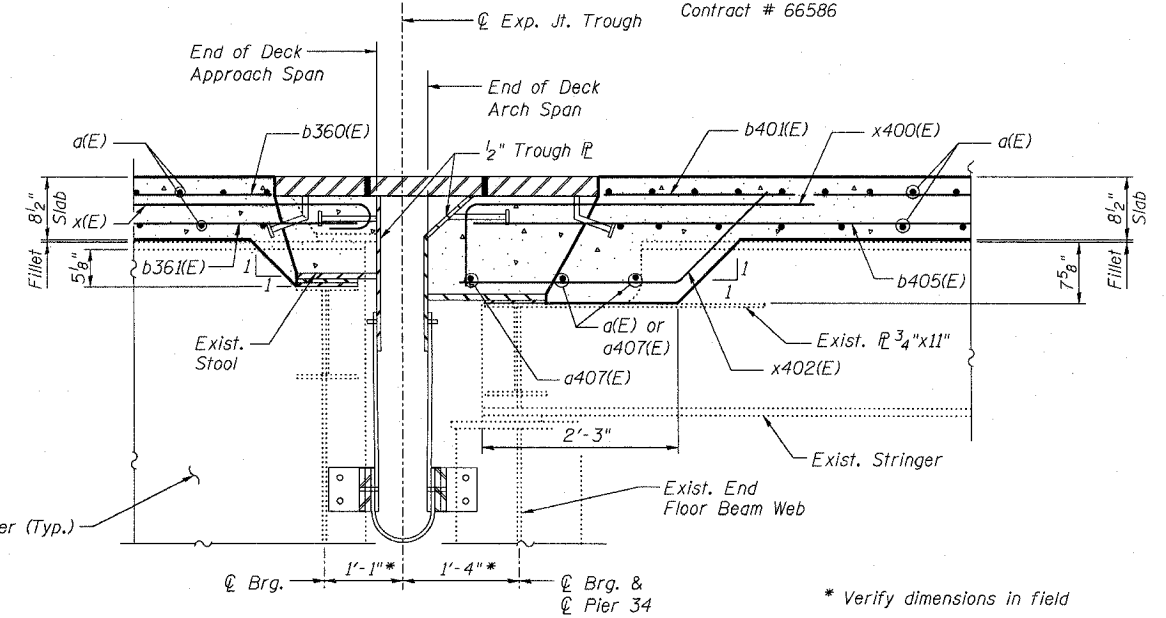


SECTION A-A
(S. Abut. SB shown U.N.O.)



SECTION B-B

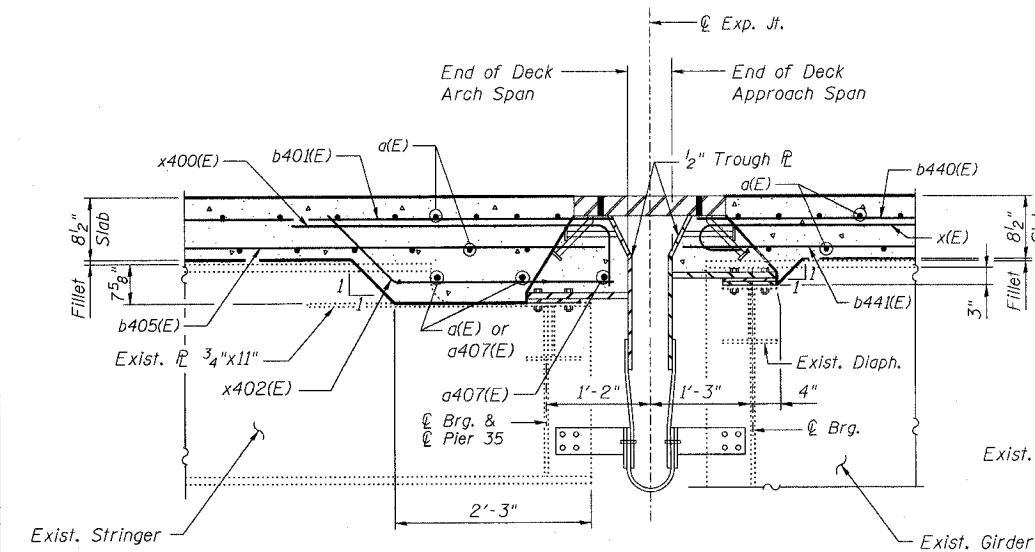
(Pier 21 Reinforcement shown)
(Other Piers similar)
(Looking West)



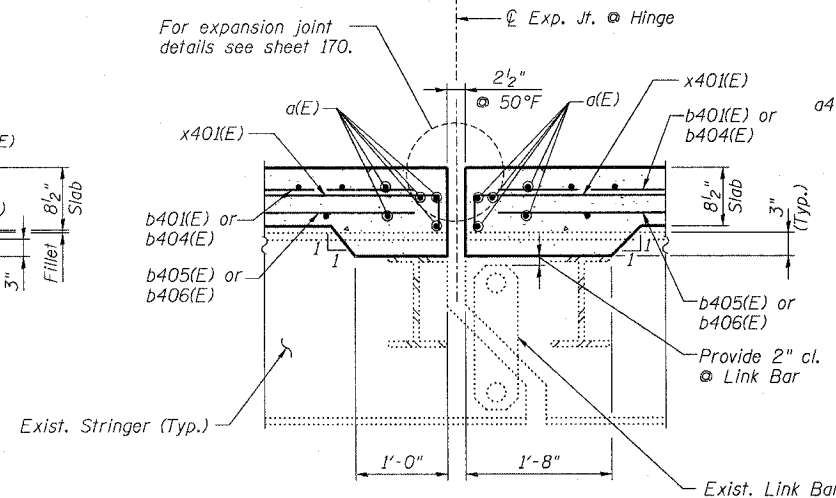
SECTION C-C

(Pier 34 near Edge of Deck)

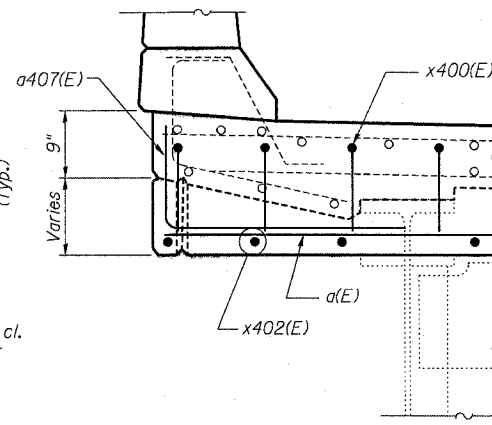
* Verify dimensions in field



SECTION D-D
(Pier 35 near C/L F.A.I. 39)

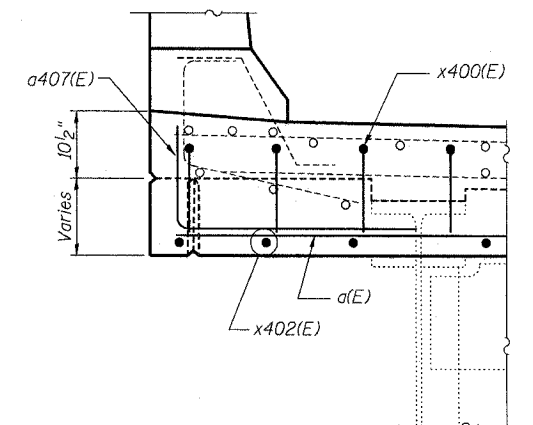


SECTION E-E
(Tied Arch Span Hinge)



VIEW C1-C1

(Typ. End of Slab at Pier 34 & 35)



VIEW C2-C2

(Typ. End of Slab at Pier 34 & 35)

NOTES:

1. Reinforcement bars designated (E) shall be epoxy coated.
2. For Strip Seal Expansion Joint details see sheet 170.
3. For Finger Plate Expansion Joint details see sheets 171 thru 174.
4. U.N.O. denotes Unless Noted Otherwise.
5. Work this sheet with sheets 166, 166a, 168 and 169.

benesch

alfred benesch & company
Engineers - Surveyors - Planners
205 North Michigan Avenue, Suite 2400
Chicago, Illinois 60601
312-965-0460
Job # 3856

DECK DETAILS - 3 OF 5
ABRAHAM LINCOLN MEMORIAL BRIDGE OVER
THE ILLINOIS RIVER (PUBLIC WATERS)
F.A.I. ROUTE 39 SEC. (50-4B) BR
LASALLE COUNTY
STATION 863+16.00
STRUCTURE NO. 050-0191 (SB & NB)

DESIGNED -	KWS
CHECKED -	AJK
DRAWN -	AR
CHECKED -	MRB

x:\3800s\3856\structures\abe\lincoln\memorial\final\plans\AL-dkdf13.sht

9:03:52 AM

8/30/2006