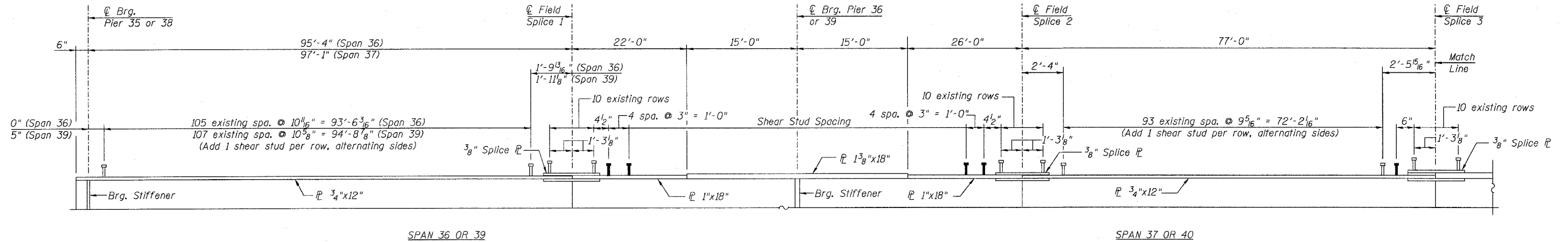


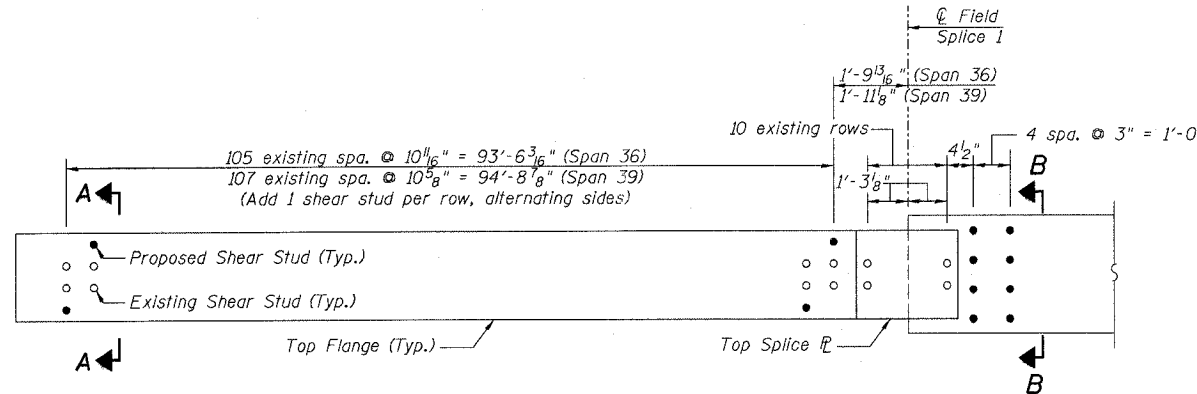
STATE OF ILLINOIS
DEPARTMENT OF TRANSPORTATION

ROUTE NO.	SECTION	COUNTY	SHEET	SHEET
F.A.I. 39	50-4B	LASALLE	21	194
FED. ROAD DIST. NO. 7		ILLINOIS	FED. AID PROJECT-	

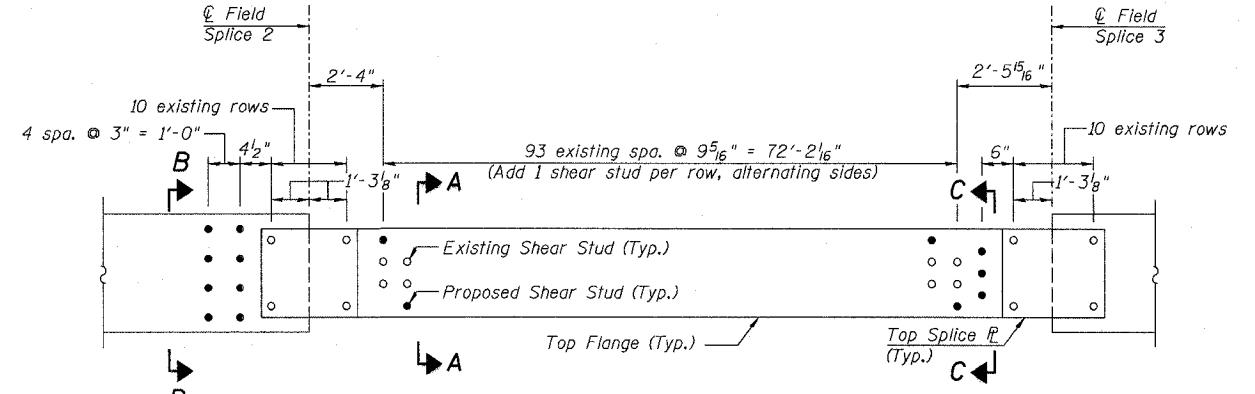
Contract # 66586



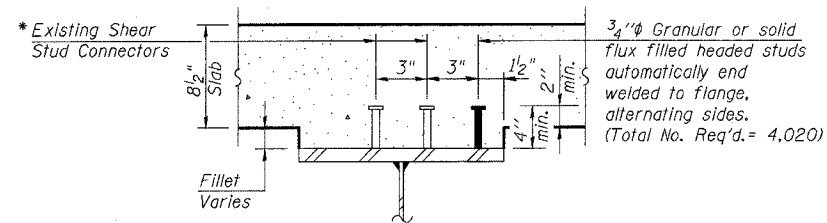
GIRDER ELEVATION



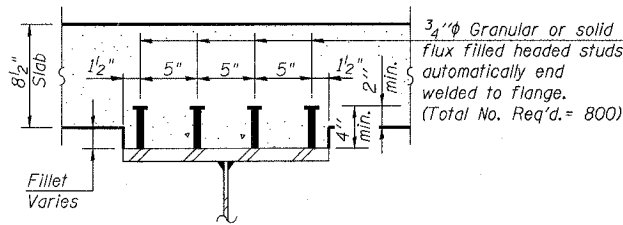
PARTIAL PLAN
(Span 36 or 39)



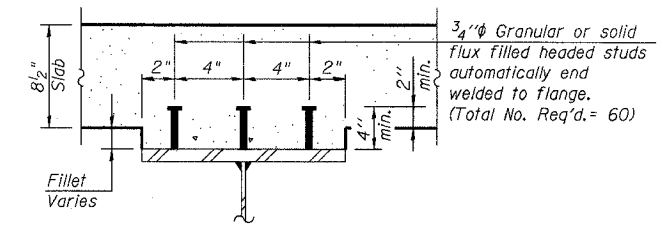
PARTIAL PLAN
(Span 37 or 40)



SECTION A-A



SECTION B-B



SECTION C-C

**SHEAR STUDS - SPANS 36 & 37
AND SPANS 39 & 40**
ABRAHAM LINCOLN MEMORIAL BRIDGE OVER
THE ILLINOIS RIVER (PUBLIC WATERS)
F.A.I. ROUTE 39 SEC. (50-4B) BR
LASALLE COUNTY
STATION 863+16.00
STRUCTURE NO. 050-0191 (SB & NB)

* Fillet reinforcement will be required if existing studs do not meet the minimum projection into proposed deck. See detail on sheet 168.

DESIGNED	KWS
CHECKED	MRB
DRAWN	JGY
CHECKED	MTH

LIN ENGINEERING, LTD.
210 W. Chestnut
Chatham, Illinois 62629
(217) 483-4168
FAX (217) 483-4706

benesch
alfred benesch & company
Engineers • Surveyors • Planners
205 North Michigan Avenue, Suite 2400
Chicago, Illinois 60601
312-865-0450
Job # 3856

x:\3800s\3856\structures\abe lincoln memorial\final\plans\studs_36&37and39&40.sht 9:04:56 AM 8/30/2006