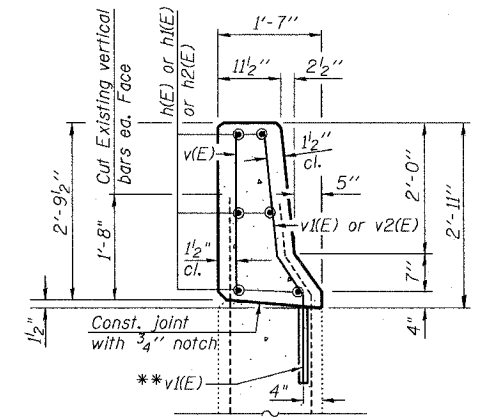
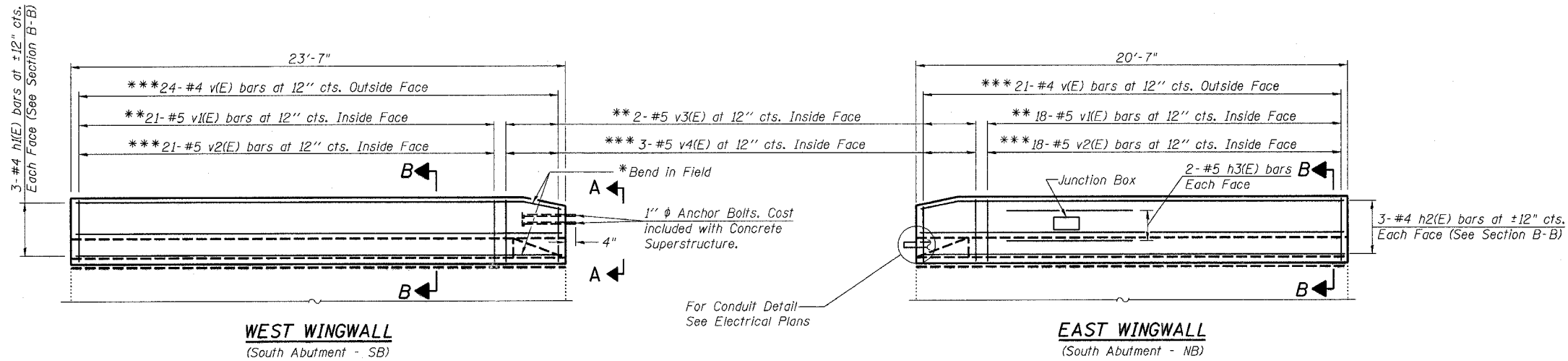


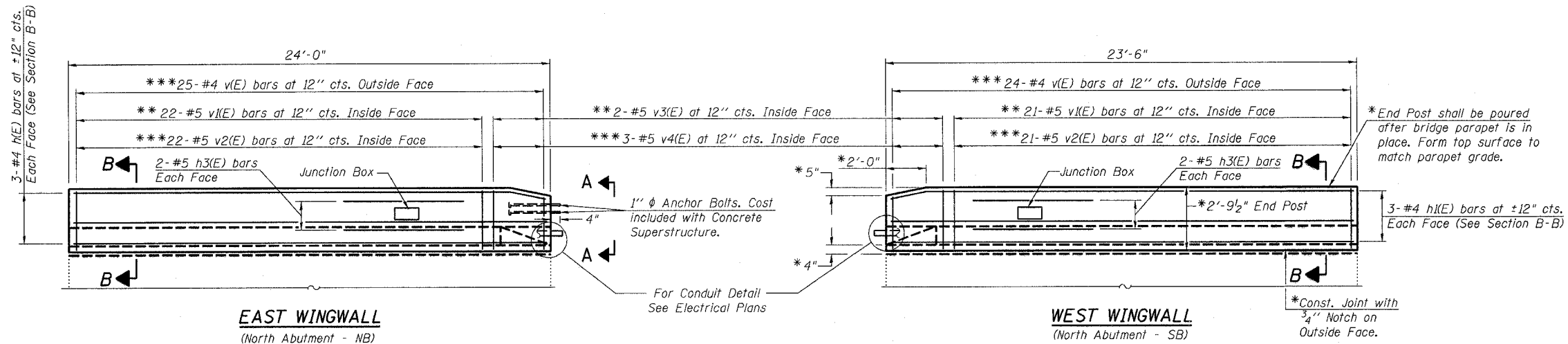
STATE OF ILLINOIS
DEPARTMENT OF TRANSPORTATION

ROUTE NO.	SECTION	COUNTY	TOTAL SHEETS	SHEET NO.	SHEET NO. 226 313 SHEETS
F.A.I. 39	50-4B	LASALLE		249	
FED. ROAD DIST. NO. 7	ILLINOIS	FED. AID PROJECT-			

Contract # 66586



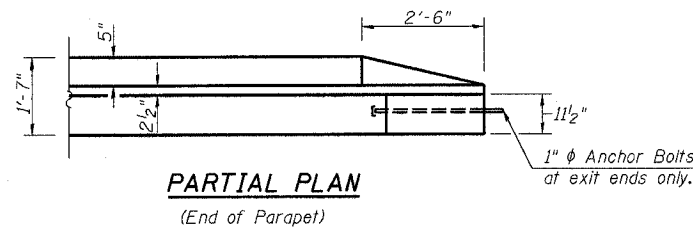
SECTION B-B



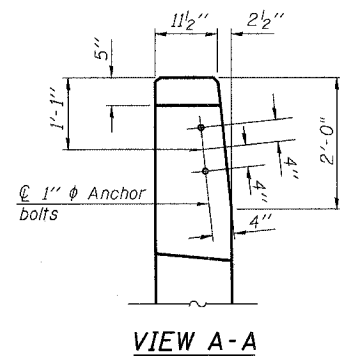
ABUTMENT WINGWALL
BILL OF MATERIAL

Bar	No.	Size	Length	Shape
h(E)	6	#4	23'-9"	—
h(E)	12	#4	23'-4"	—
h2(E)	6	#4	20'-4"	—
h3(E)	12	#5	6'-0"	—
v(E)	94	#4	2'-6"	—
v(E)	82	#5	3'-8"	—
v2(E)	82	#5	2'-8"	—
v3(E)	8	#5	3'-5"	—
v4(E)	12	#5	2'-8"	—
Reinforcement Bars, Epoxy Coated			Pound	1200

Reinforcement Bars designated (E) shall be epoxy coated.

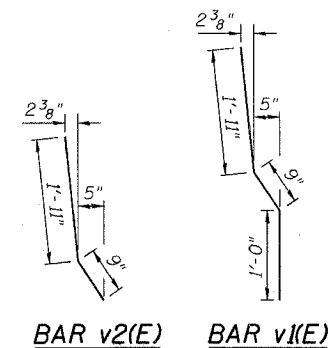
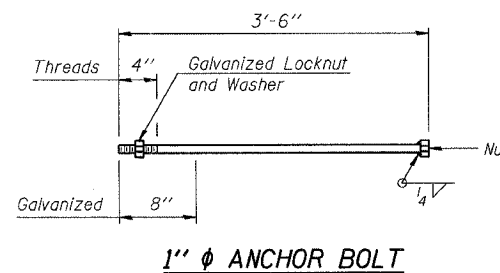


PARTIAL PLAN
(End of Parapet)



VIEW A-A

- * Typical on all four wingwall parapets.
- ** Drill and Epoxy Grout v(E) and v3(E) bars 9" min. embedment at 12" cts. between existing vertical bars.
- *** Lap 1'-8" min. with existing vertical bars.



BAR v2(E) BAR v(E)

NOTES:

- Quantity of concrete in end post included with Concrete Superstructure on sheets 222 thru 225.
- Existing reinforcement shall be cleaned, straightened and incorporated into the new concrete, in accordance with IDOT Standard Specifications Article 501.03. Cost included in "Concrete Removal".
- For locations of Junction Boxes, see Electrical Plans.

ABUTMENT WINGWALL PARAPETS
ABRAHAM LINCOLN BRIDGE OVER
THE ILLINOIS RIVER (PUBLIC WATERS)
F.A.I. ROUTE 39 SEC. (50-4B) BR
LASALLE COUNTY
STATION 863+16.00
STRUCTURE NO. 050-0191 (SB & NB)

lin ENGINEERING, LTD.
310 W. Chestnut
Creston, Illinois 62629
(217) 483-4168
FAX (217) 483-4706

benesch
alfred benesch & company
Engineers • Surveyors • Planners
215 North Michigan Avenue, Suite 2400
Chicago, Illinois 60601
312-565-0450
Job # 3956

DESIGNED	ADB
CHECKED	STD
DRAWN	ADB
CHECKED	MTH

x:\3800s\3856\structures\abe lincoln memorial\final\plans\From Lin\Wingwalls-Parapets\Abutment Wingwalls.sht

10:07:09 AM

8/30/2006