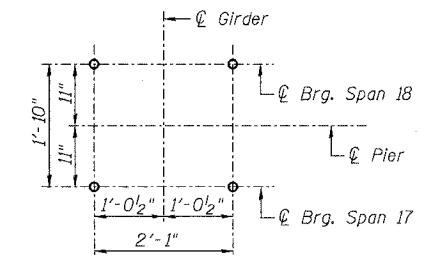
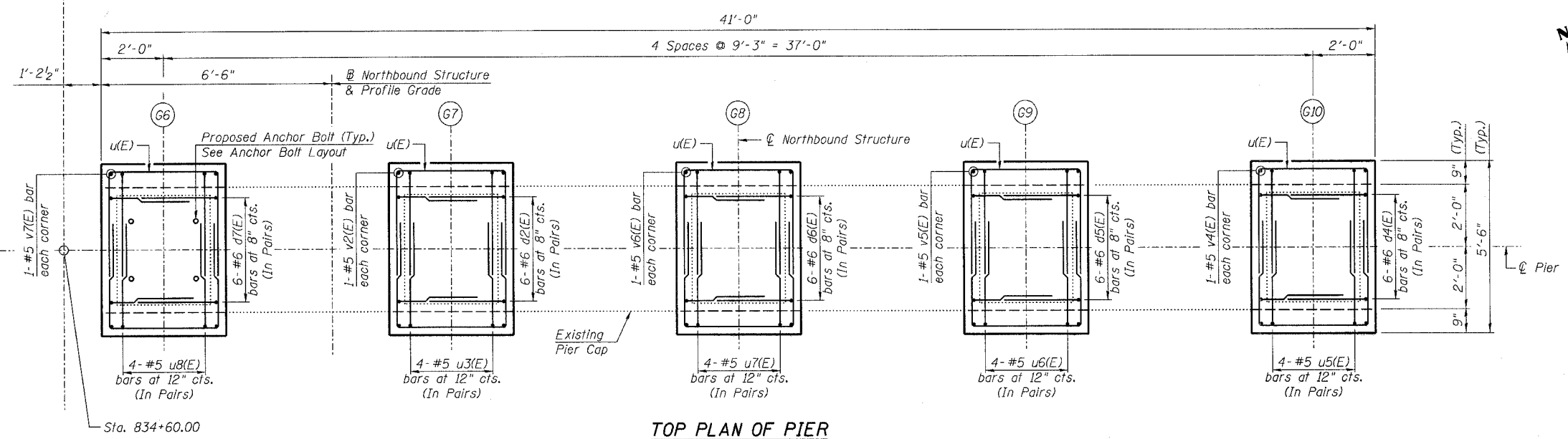


STATE OF ILLINOIS
DEPARTMENT OF TRANSPORTATION

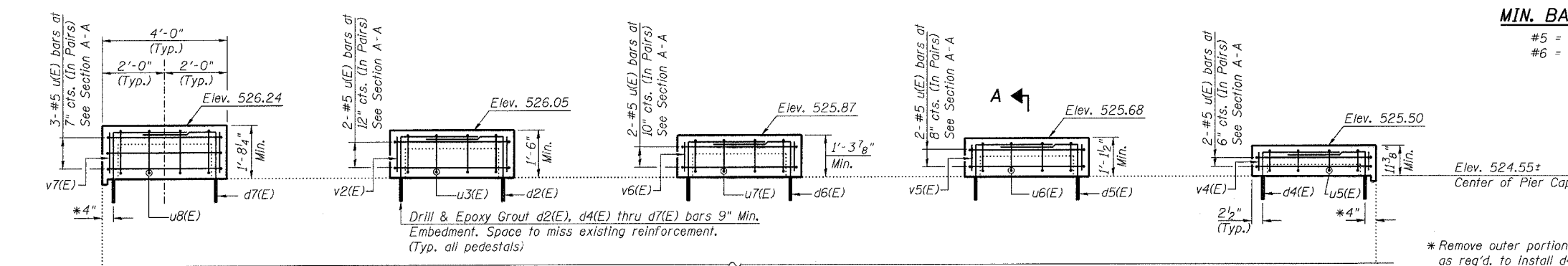
ROUTE NO. F.A.I. 39	SECTION 50-4B	COUNTY LASALLE	SHEET 286	SHEET NO. 263 313 SHEETS
FED. ROAD DIST. NO. 7		ILLINOIS	FED. AID PROJECT	Contract # 66586



ANCHOR BOLT LAYOUT
(Typ. each pedestal)

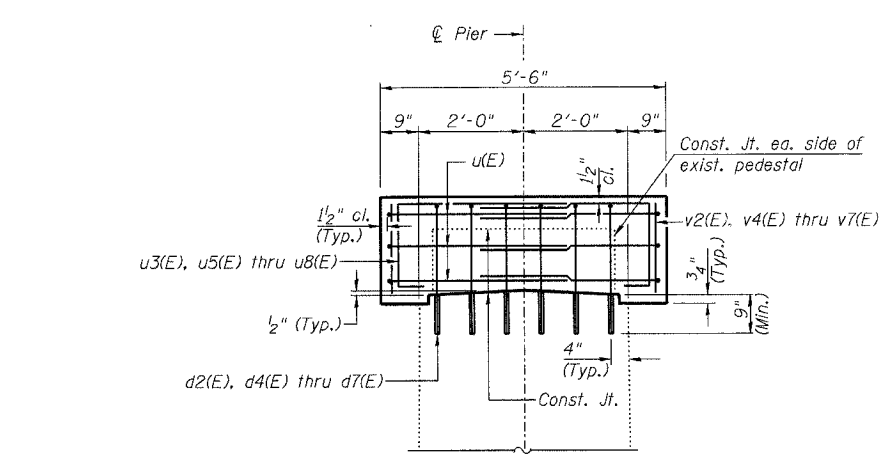


TOP PLAN OF PIER

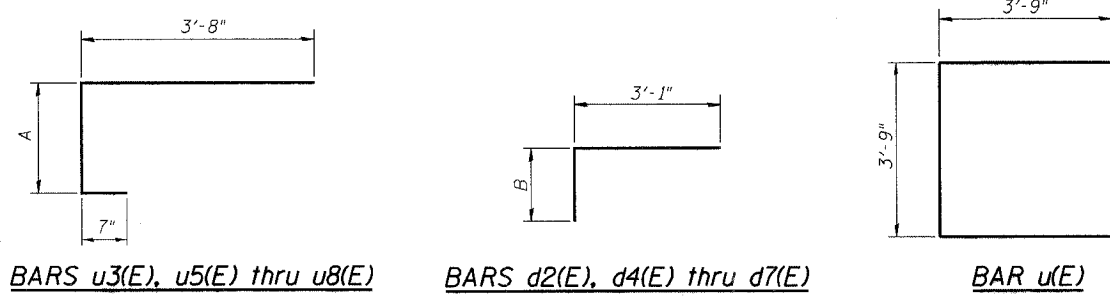


ELEVATION
(Looking North)

MIN. BAR LAP
#5 = 2'-2"
#6 = 2'-7"



SECTION A-A



Bar	A
u3(E)	1'-3"
u5(E)	8"
u6(E)	11"
u7(E)	1'-1"
u8(E)	1'-5"

Bar	B
d2(E)	2'-2"
d4(E)	1'-7"
d5(E)	1'-9"
d6(E)	1'-11"
d7(E)	2'-4"

DESIGNED - DLS
CHECKED - STD
DRAWN - SGL
CHECKED - MTH

**PIER 17 NB
BILL OF MATERIAL**

Bar No.	Size	Length	Shape
d2(E)	#6	5'-3"	┌
d4(E)	#6	4'-8"	┌
d5(E)	#6	4'-10"	┌
d6(E)	#6	5'-0"	┌
d7(E)	#6	5'-5"	┌
u(E)	#5	11'-3"	┌
u3(E)	#5	5'-6"	┌
u5(E)	#5	4'-11"	┌
u6(E)	#5	5'-2"	┌
u7(E)	#5	5'-4"	┌
u8(E)	#5	5'-8"	┌
v2(E)	#5	1'-4"	—
v4(E)	#5	0'-9"	—
v5(E)	#5	0'-11"	—
v6(E)	#5	1'-2"	—
v7(E)	#5	1'-6"	—
Concrete Structures	Cu. Yd.	4.8	
Reinforcement Bars, Epoxy Coated	Pound	960	
Bridge Seat Sealer	Sq. Ft.	357	
Concrete Removal	Cu. Yd.	0.7	

Reinforcement Bars designated (E) shall be epoxy coated.

NOTES:

1. Prior to ordering any material, the Contractor shall verify in the field all bearing height and shim thickness dimensions.
2. Space pedestal reinforcement to miss proposed anchor bolts.
3. See Sheet 19 for removal details.
4. See Sheet 215 for bearing details.

PEDESTAL REHAB. - PIER 17 NB
ABRAHAM LINCOLN BRIDGE OVER
THE ILLINOIS RIVER (PUBLIC WATERS)
F.A.I. ROUTE 39 SEC. (50-4B) BR
LASALLE COUNTY
STATION 863+16.00
STRUCTURE NO. 050-0191 (SB & NB)

benesch
alfred benesch & company
Engineers • Surveyors • Planners
205 North Michigan Avenue, Suite 2400
Chicago, Illinois 60601
312-565-0450
Job # 3856

LIN ENGINEERING, LTD.
210 W. Chestnut
Chicago, Illinois 60629
(212) 483-4168
FAX (212) 483-4706

8/30/2006 10:05:45 AM x:\3800s\3856\structures\abe lincoln memorial\final\plans\From_Lin\Pedestals\Ped_P17NB.sht