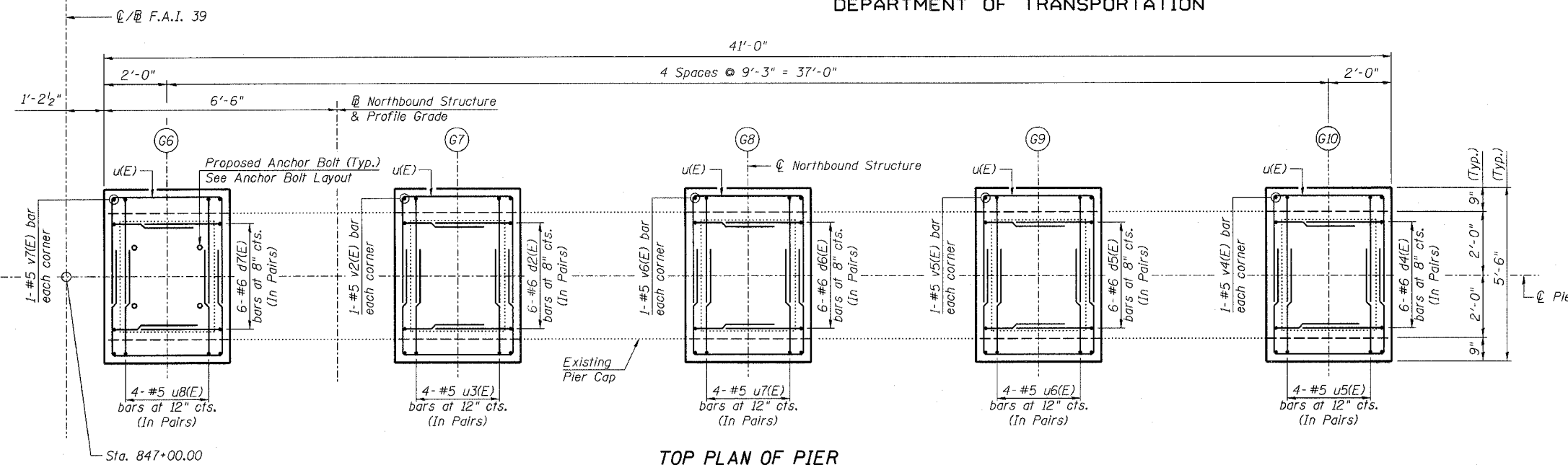


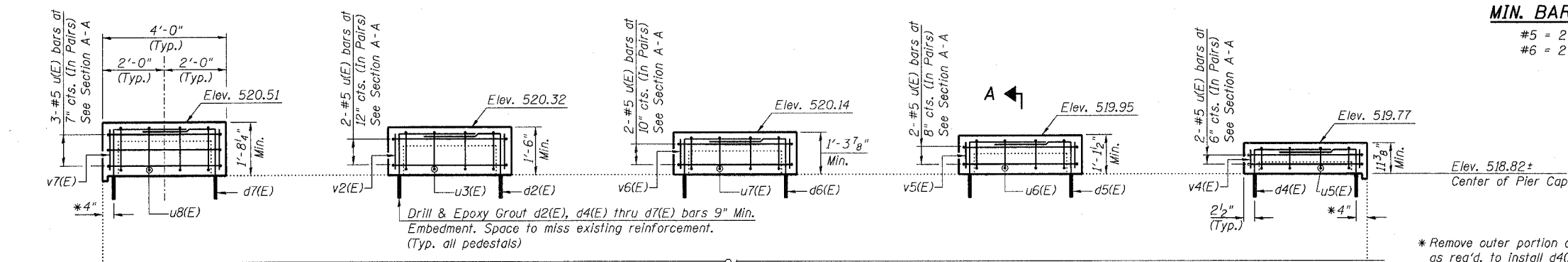
STATE OF ILLINOIS  
DEPARTMENT OF TRANSPORTATION

ROUTE NO. F.A.I. 39	SECTION 50-4B	COUNTY LASALLE	SHEET 271	SHEET NO. 274
FED. ROAD DIST. NO. 7				ILLINOIS FED. AID PROJECT

Contract # 66586



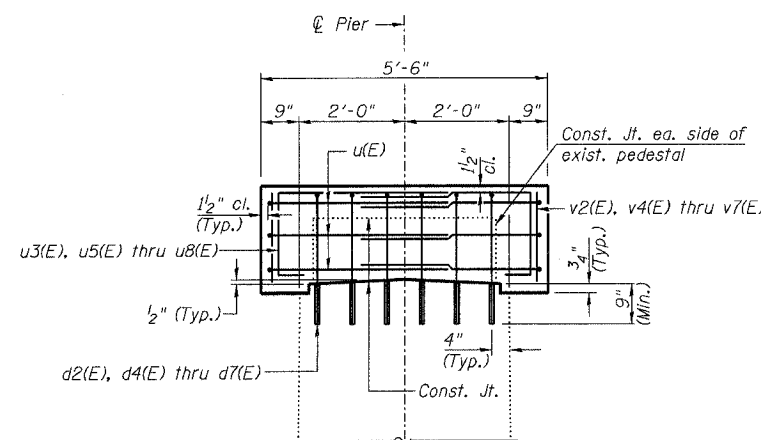
TOP PLAN OF PIER



ELEVATION  
(Looking North)

MIN. BAR LAP

#5 = 2'-2"  
#6 = 2'-7"



SECTION A-A

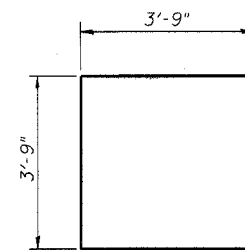
BARS u3(E), u5(E) thru u8(E)

Bar	A
u3(E)	1'-3"
u5(E)	8"
u6(E)	11"
u7(E)	1'-1"
u8(E)	1'-5"

BARS d2(E), d4(E) thru d7(E)

Bar	B
d2(E)	2'-2"
d4(E)	1'-7"
d5(E)	1'-9"
d6(E)	1'-11"
d7(E)	2'-4"

BAR u(E)



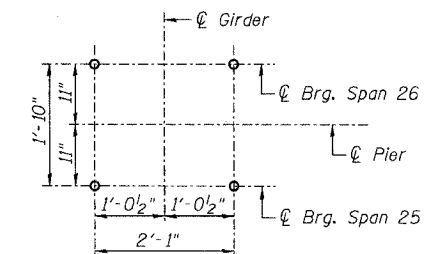
DESIGNED - DLS
CHECKED - STD
DRAWN - SGL
CHECKED - MTH

**LIN ENGINEERING, LTD.**  
20 W. Chestnut  
Chatham, Illinois 62629  
(217) 483-4168  
FAX (217) 483-4106

**benesch**  
alfred benesch & company  
Engineers • Surveyors • Planners  
205 North Michigan Avenue, Suite 2400  
Chicago, Illinois 60601  
312-665-0450  
Job # 3856

**PEDESTAL REHAB. - PIER 25 NB**  
**ABRAHAM LINCOLN MEMORIAL BRIDGE OVER**  
**THE ILLINOIS RIVER (PUBLIC WATERS)**  
**F.A.I. ROUTE 39 SEC. (50-4B) BR**  
**LASALLE COUNTY**  
**STATION 863+16.00**  
**STRUCTURE NO. 050-0191 (SB & NB)**

ANCHOR BOLT LAYOUT  
(Typ. each pedestal)



PIER 25 NB  
BILL OF MATERIAL

Bar	No.	Size	Length	Shape
d2(E)	12	#6	5'-3"	┌
d4(E)	12	#6	4'-8"	┌
d5(E)	12	#6	4'-10"	┌
d6(E)	12	#6	5'-0"	┌
d7(E)	12	#6	5'-5"	┌
u(E)	22	#5	11'-3"	┌
u3(E)	8	#5	5'-6"	┌
u5(E)	8	#5	4'-11"	┌
u6(E)	8	#5	5'-2"	┌
u7(E)	8	#5	5'-4"	┌
u8(E)	8	#5	5'-8"	┌
v2(E)	4	#5	1'-4"	—
v4(E)	4	#5	0'-9"	—
v5(E)	4	#5	0'-11"	—
v6(E)	4	#5	1'-2"	—
v7(E)	4	#5	1'-6"	—
Concrete Structures	Cu. Yd.	4.8		
Reinforcement Bars, Epoxy Coated	Pound	960		
Bridge Seat Sealer	Sq. Ft.	357		
Concrete Removal	Cu. Yd.	0.7		

Reinforcement Bars designated (E) shall be epoxy coated.

NOTES:

1. Prior to ordering any material, the Contractor shall verify in the field all bearing height and shim thickness dimensions.
2. Space pedestal reinforcement to miss proposed anchor bolts.
3. See Sheet 19 for removal details.
4. See Sheet 215 for bearing details.

x:\3800s\3856\structures\abe lincoln memorial\final\plans\From.Lin\Pedestals\Ped.P25NB.sht

10:04:47 AM

8/30/2006