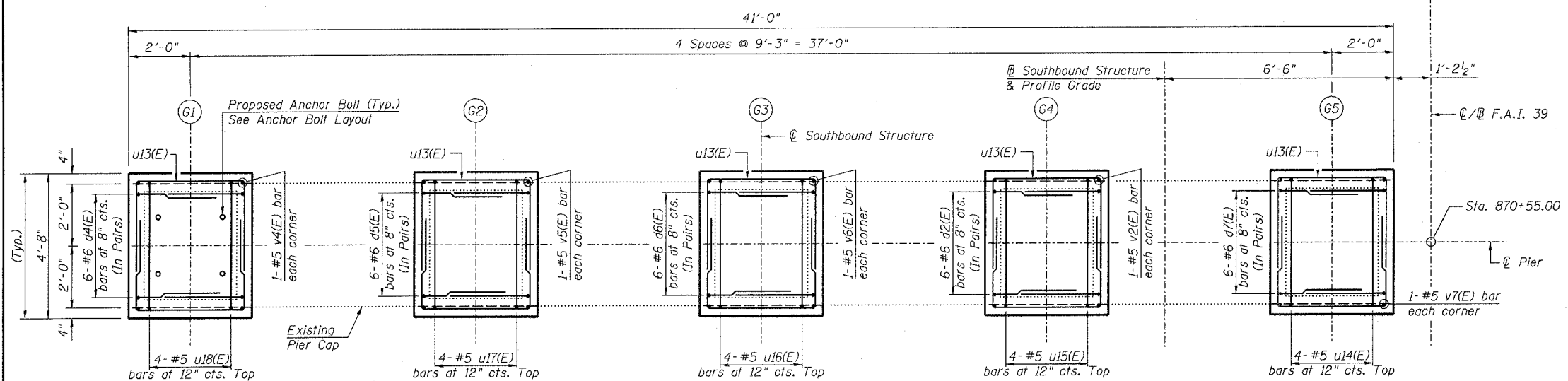


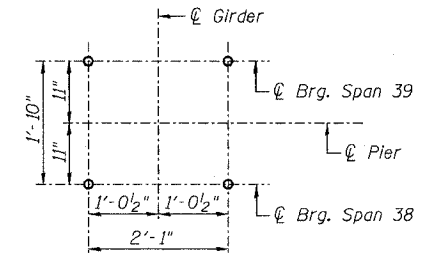
STATE OF ILLINOIS  
DEPARTMENT OF TRANSPORTATION

ROUTE NO.	SECTION	COUNTY	TOTAL SHEETS	SHEET	SHEET NO.
F.A.I. 39	50-4B	LASALLE		203	313 SHEETS
FED. ROAD DIST. NO. 7	ILLINOIS	FED. AID PROJECT			

Contract # 66586



TOP PLAN OF PIER

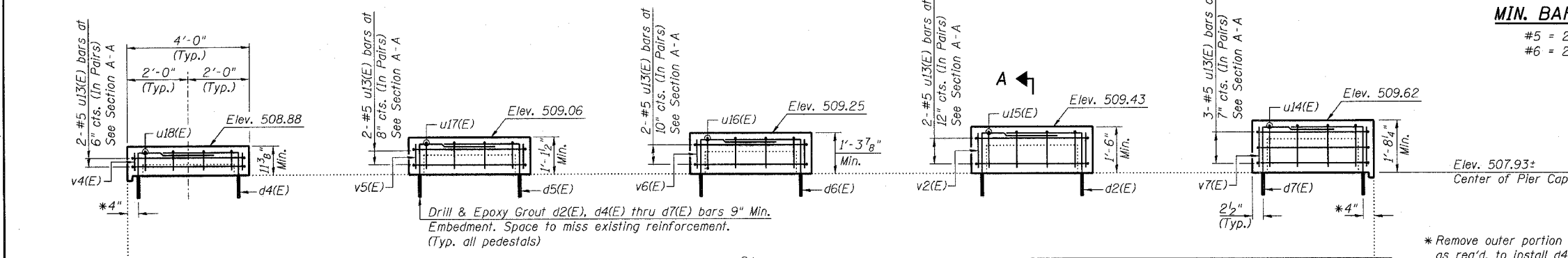


ANCHOR BOLT LAYOUT  
(Typ. each pedestal)

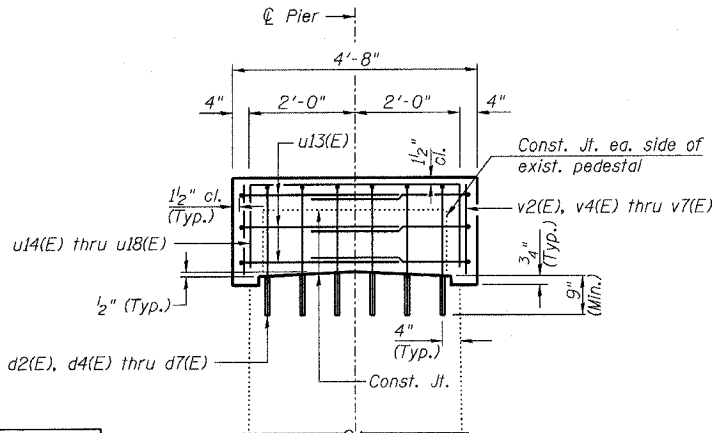
PIER 38 SB  
BILL OF MATERIAL

Bar	No.	Size	Length	Shape
d2(E)	12	#6	5'-3"	┌
d4(E)	12	#6	4'-8"	┌
d5(E)	12	#6	4'-10"	┌
d6(E)	12	#6	5'-0"	┌
d7(E)	12	#6	5'-5"	┌
u13(E)	22	#5	10'-5"	▬
u14(E)	4	#5	7'-1"	▬
u15(E)	4	#5	6'-9"	▬
u16(E)	4	#5	6'-5"	▬
u17(E)	4	#5	6'-1"	▬
u18(E)	4	#5	5'-7"	▬
v2(E)	4	#5	1'-4"	▬
v4(E)	4	#5	0'-9"	▬
v5(E)	4	#5	0'-11"	▬
v6(E)	4	#5	1'-2"	▬
v7(E)	4	#5	1'-6"	▬
Concrete Structures	Cu. Yd.		3.9	
Reinforcement Bars, Epoxy Coated	Pound		850	
Bridge Seal Sealer	Sq. Ft.		311	
Concrete Removal	Cu. Yd.		0.7	

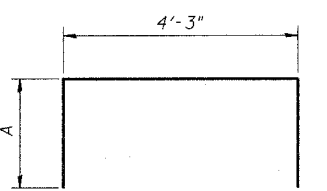
MIN. BAR LAP  
#5 = 2'-2"  
#6 = 2'-7"



ELEVATION  
(Looking North)

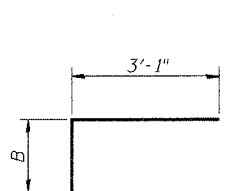


SECTION A-A



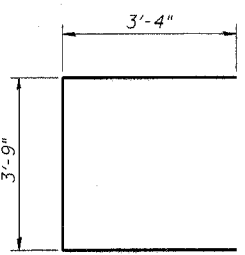
BARS u14(E) thru u18(E)

Bar	A
u14(E)	1'-5"
u15(E)	1'-3"
u16(E)	1'-1"
u17(E)	11"
u18(E)	8"



BARS d2(E), d4(E) thru d7(E)

Bar	B
d2(E)	2'-2"
d4(E)	1'-7"
d5(E)	1'-9"
d6(E)	1'-11"
d7(E)	2'-4"



BAR u13(E)

NOTES:

1. Prior to ordering any material, the Contractor shall verify in the field all bearing height and shim thickness dimensions.
2. Space pedestal reinforcement to miss proposed anchor bolts.
3. See Sheet 19 for removal details.
4. See Sheet 215 for bearing details.

PEDESTAL REHAB. - PIER 38 SB  
ABRAHAM LINCOLN MEMORIAL BRIDGE OVER  
THE ILLINOIS RIVER (PUBLIC WATERS)  
F.A.I. ROUTE 39 SEC. (50-4B) BR  
LASALLE COUNTY  
STATION 863+16.00  
STRUCTURE NO. 050-0191 (SB & NB)

DESIGNED - DLS
CHECKED - STD
DRAWN - SGL
CHECKED - MTH

**LIN ENGINEERING, LTD.**  
210 W. Chestnut  
Cochran, Illinois 62629  
(217) 483-4168  
FAX (217) 483-4706

**benesch**  
alfred benesch & company  
Engineers • Surveyors • Planners  
205 North Michigan Avenue, Suite 2400  
Chicago, Illinois 60601  
312-365-0450  
Job # 3856

8/30/2006 10:03:53 AM x:\3800s\3856\structures\abe lincoln memorial\final\plans\From\_Lin\Pedestals\Ped\_P38SB.sht