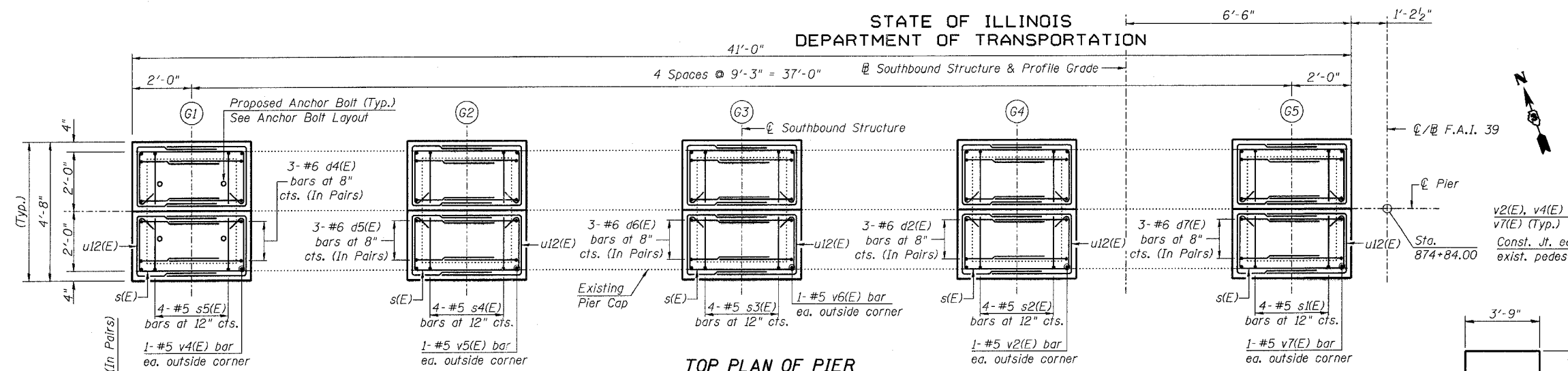


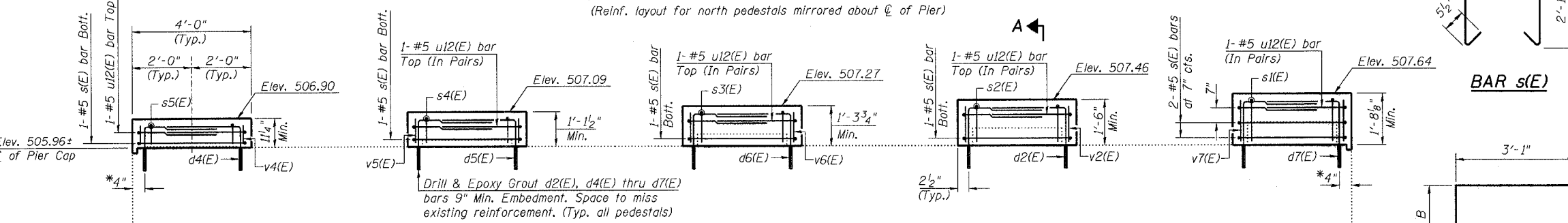
STATE OF ILLINOIS
DEPARTMENT OF TRANSPORTATION

ROUTE NO.	SECTION	COUNTY	SHEET	SHEET NO.
F.A.I. 39	50-4B	LASALLE	330	313 SHEETS
FED. ROAD DIST. NO. 7		ILLINOIS	FED. AID PROJECT	

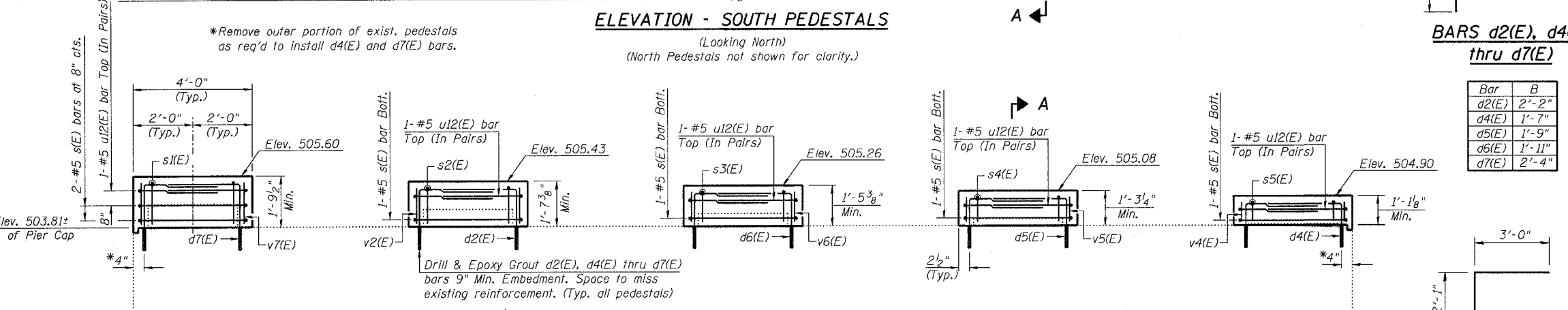
Contract # 66586



TOP PLAN OF PIER
(Reinf. layout for north pedestals mirrored about \bar{C} of Pier)



ELEVATION - SOUTH PEDESTALS
(Looking North)
(North Pedestals not shown for clarity.)

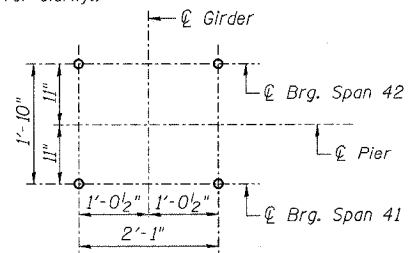


ELEVATION - NORTH PEDESTALS
(Looking South)
(South pedestals not shown for clarity.)

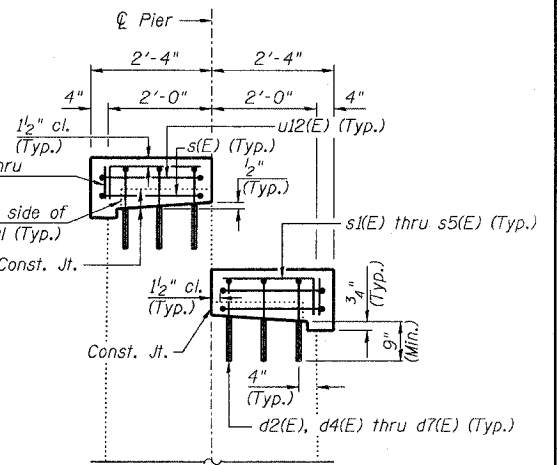


DESIGNED - DLS
CHECKED - STD
DRAWN - KHH
CHECKED - MTH

Bar	A
s1(E)	1'-6"
s2(E)	1'-4"
s3(E)	1'-2"
s4(E)	11"
s5(E)	9"



ANCHOR BOLT LAYOUT
(Typ. each pedestal)



SECTION A-A

**PIER 41 SB
BILL OF MATERIAL**

Bar	No.	Size	Length	Shape
d2(E)	12	#6	5'-3"	┌
d4(E)	12	#6	4'-8"	┌
d5(E)	12	#6	4'-10"	┌
d6(E)	12	#6	5'-0"	┌
d7(E)	12	#6	5'-5"	┌
s(E)	12	#5	8'-10"	┌
s1(E)	8	#5	5'-0"	┌
s2(E)	8	#5	4'-8"	┌
s3(E)	8	#5	4'-4"	┌
s4(E)	8	#5	3'-10"	┌
s5(E)	8	#5	3'-6"	┌
v2(E)	4	#5	1'-4"	—
v4(E)	4	#5	0'-9"	—
v5(E)	4	#5	0'-11"	—
v6(E)	4	#5	1'-2"	—
v7(E)	4	#5	1'-6"	—
u12(E)	20	#5	8'-1"	┌
Concrete Structures		Cu. Yd.	4.1	
Reinforcement Bars, Epoxy Coated		Pound	940	
Bridge Seat Sealer		Sq. Ft.	345	
Concrete Removal		Cu. Yd.	0.7	

Reinforcement Bars designated (E) shall be epoxy coated.

NOTES:

1. Prior to ordering any material, the Contractor shall verify in the field all bearing height and shim thickness dimensions.
2. Space pedestal reinforcement to miss proposed anchor bolts.
3. See Sheet 19 for removal details.
4. See Sheet 215 for bearing details.

PEDESTAL REHAB. - PIER 41 SB
ABRAHAM LINCOLN MEMORIAL BRIDGE OVER
THE ILLINOIS RIVER (PUBLIC WATERS)
F.A.I. ROUTE 39 SEC. (50-4B) BR
LASALLE COUNTY
STATION 863+16.00
STRUCTURE NO. 050-0191 (SB & NB)

LIN ENGINEERING, LTD.
210 W. Chestnut
Chatham, Illinois 62629
(217) 483-4168
FAX (217) 483-4706

benesch
alfred benesch & company
Engineers • Surveyors • Planners
205 North Michigan Avenue, Suite 2400
Chicago, Illinois 60601
312-566-0450
Job # 3856

x:\3800s\3856\structures\abe\lincoln\final\plans\From_Lin\Pedestal\SB\PIER 41 SB.sht 10/03/2006 8/30/2006