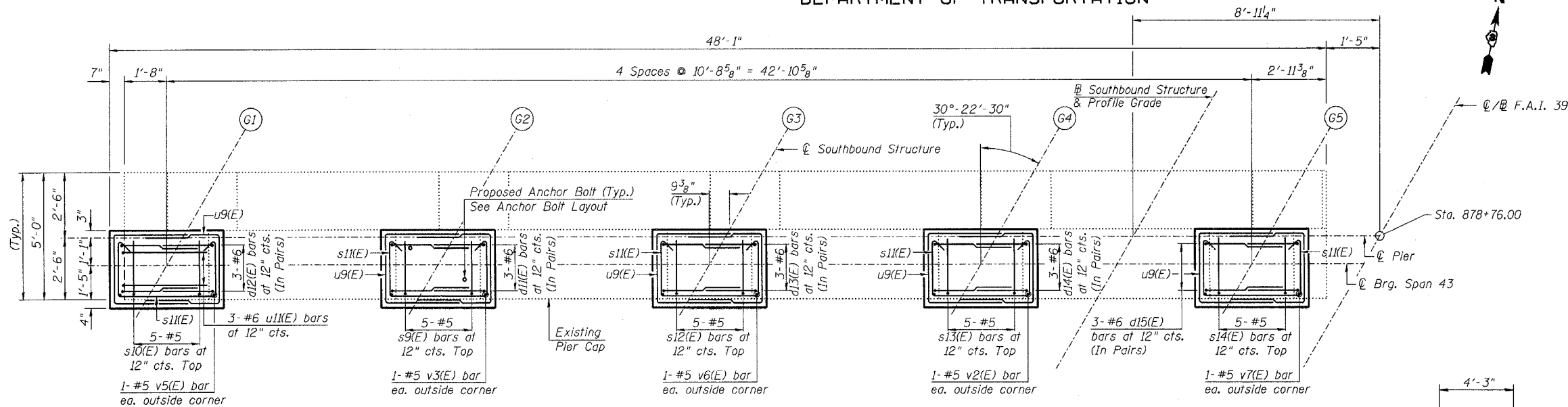


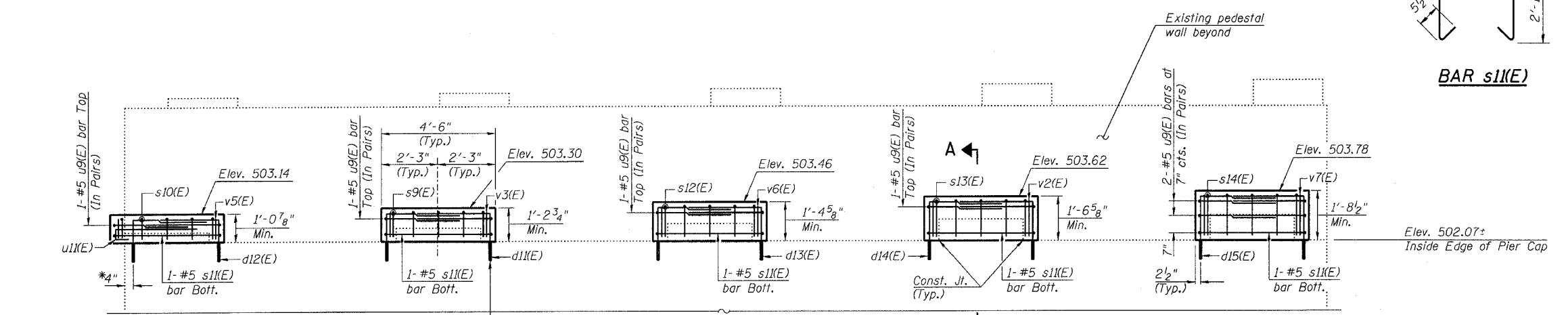
STATE OF ILLINOIS
DEPARTMENT OF TRANSPORTATION

ROUTE NO. F.A.I. 39	SECTION 50-4B	COUNTY LASALLE	SHEET NO. 335	SHEET NO. 313
FED. ROAD DIST. NO. 7				ILLINOIS
FED. AID PROJECT				

Contract # 66586



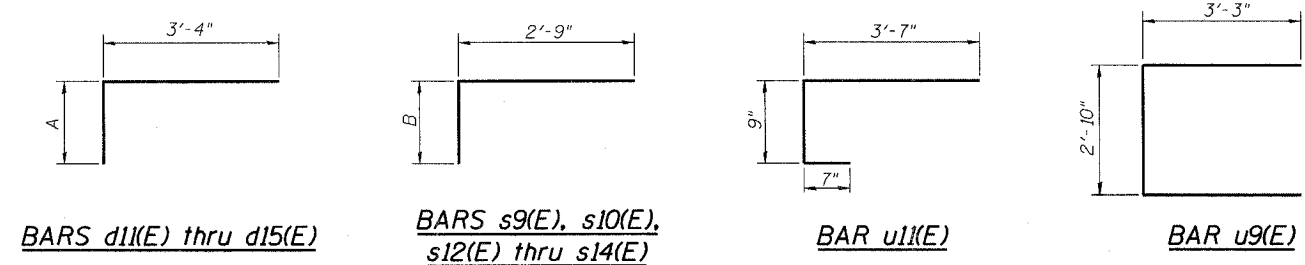
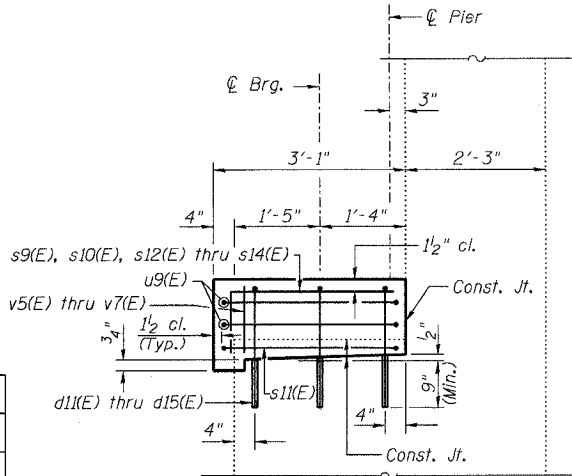
TOP PLAN OF PIER



ELEVATION
(Looking North)

*Remove outer portion of exist. pedestal as req'd. to install d12(E) bars.

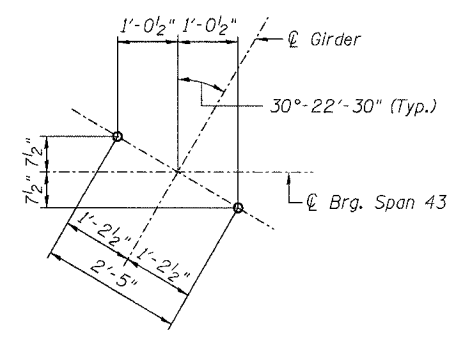
MIN. BAR LAP
#5 = 2'-2"
#6 = 2'-7"



Bar	A
d1(E)	1'-10"
d2(E)	1'-8"
d3(E)	2'-0"
d4(E)	2'-2"
d5(E)	2'-4"

Bar	B
s9(E)	1'-0"
s10(E)	10"
s12(E)	1'-2"
s13(E)	1'-4"
s14(E)	1'-6"

DESIGNED - DLS
CHECKED - STD
DRAWN - KHH
CHECKED - MTH



ANCHOR BOLT LAYOUT
(Typ. each pedestal)

**PIER 33 SB
BILL OF MATERIAL**

Bar	No.	Size	Length	Shape
d1(E)	6	#6	5'-2"	┌
d2(E)	6	#6	5'-0"	┌
d3(E)	6	#6	5'-4"	┌
d4(E)	6	#6	5'-6"	┌
d5(E)	6	#6	5'-8"	┌
s9(E)	5	#5	3'-9"	┌
s10(E)	5	#5	3'-7"	┌
s11(E)	5	#5	10'-10"	┌
s12(E)	5	#5	3'-11"	┌
s13(E)	5	#5	4'-1"	┌
s14(E)	5	#5	4'-3"	┌
u9(E)	12	#5	9'-4"	┌
u1(E)	3	#6	4'-11"	┌
v2(E)	2	#5	1'-4"	—
v3(E)	2	#5	1'-0"	—
v5(E)	2	#5	0'-11"	—
v6(E)	2	#5	1'-2"	—
v7(E)	2	#5	1'-6"	—
Concrete Structures	Cu. Yd.	3.1		
Reinforcement Bars, Epoxy Coated	Pound	550		
Bridge Seat Sealer	Sq. Ft.	226		
Concrete Removal	Cu. Yd.	0.6		

Reinforcement Bars designated (E) shall be epoxy coated.

- NOTES:**
1. Prior to ordering any material, the Contractor shall verify in the field all bearing height and shim thickness dimensions.
 2. Space pedestal reinforcement to miss proposed anchor bolts.
 3. See Sheet 19 for removal details.
 4. See Sheet 215 for bearing details.

PEDESTAL REHAB. - PIER 33 SB
ABRAHAM LINCOLN MEMORIAL BRIDGE OVER
THE ILLINOIS RIVER (PUBLIC WATERS)
F.A.I. ROUTE 39 SEC. (50-4B) BR
LASALLE COUNTY
STATION 863+16.00
STRUCTURE NO. 050-0191 (SB & NB)

lin ENGINEERING, LTD.
210 W. Chestnut
Cochran, Illinois 62629
(217) 483-4168
FAX (217) 483-4706

benesch
alfred benesch & company
Engineers • Surveyors • Planners
205 North Michigan Avenue, Suite 2400
Chicago, Illinois 60601
312-255-0450
Job # 3856

8/30/2006 10:03:10 AM x:\3800s\3856\structures\abe lincoln memorial\final\plans\From_Lin\Pedestals\Ped_P43SB.sht