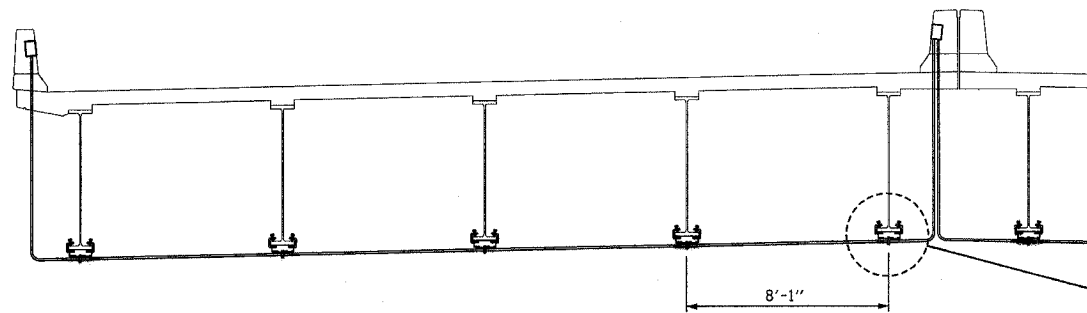
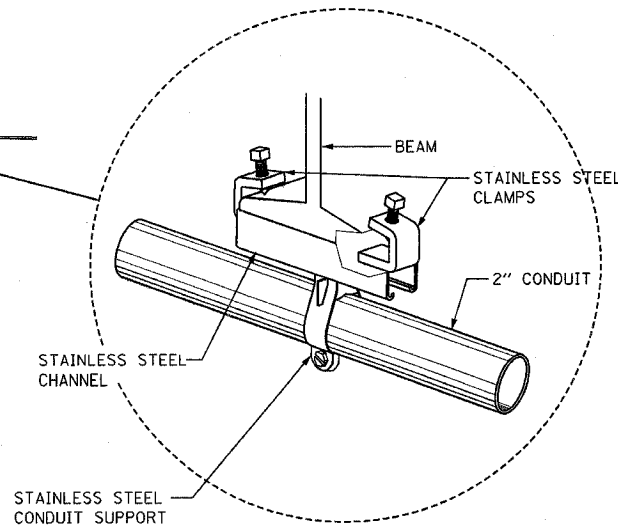


F.A. RTE.	SECTION	COUNTY	TOTAL SHEETS	SHEET NO.
39	50-4B	LASALLE		356
STA.		TO STA.		
FED. ROAD DIST. NO.		ILLINOIS FED. AID PROJECT		



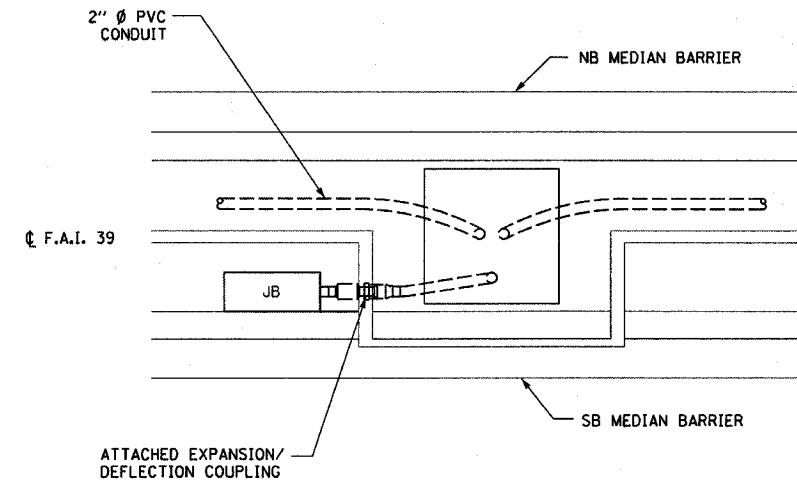
MEDIAN PARAPET TO OUTSIDE PARAPET TRANSITION

NOTE - SOUTHBOUND ATTACHMENT SIMILAR



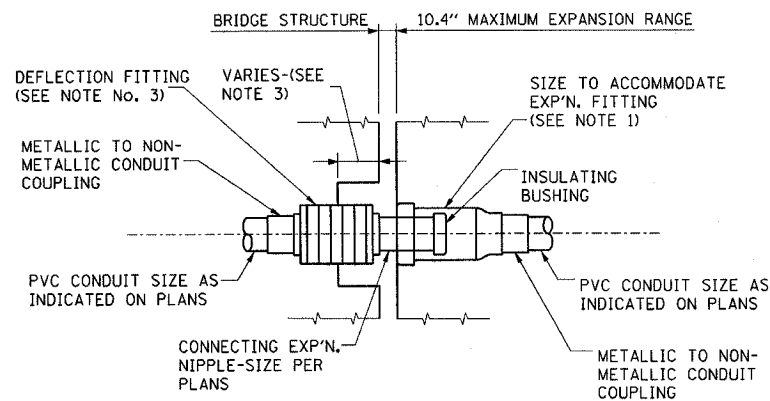
CLAMP DETAIL

N.T.S.



NORTHBOUND TO SOUTHBOUND TRANSITION

PLAN VIEW

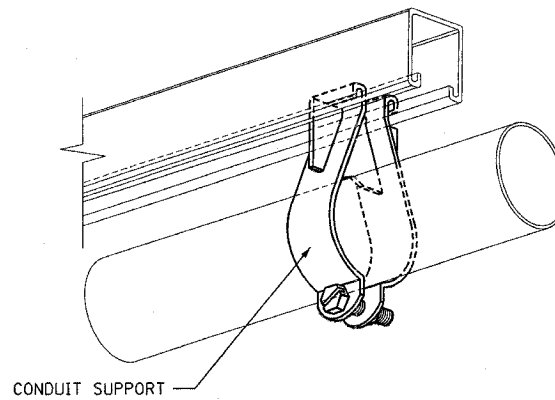


CONDUIT EXPANSION/DEFLECTION COUPLING EMBEDDED DETAIL

NOTE - COST OF CONDUIT EXPANSION/DEFLECTION COUPLING IS INCLUDED IN THE PAY ITEM FOR CONDUIT. (N.T.S.)

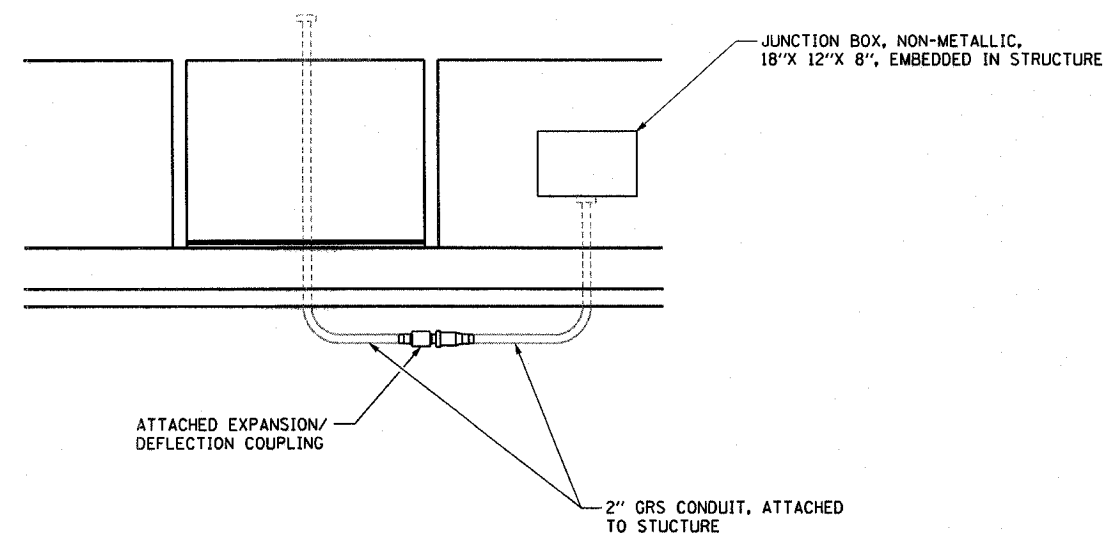
NOTES:

1. THE BARREL OF THE FITTING WILL BE FULLY EMBEDDED IN THE CONCRETE ON ONE SIDE OF THE EXPANSION JOINT.
2. CONDUIT BENDS AND RADII WILL BE IN ACCORDANCE WITH THE STANDARD SPECIFICATIONS.
3. A CAVITY OPENING, IF REQUIRED, WILL BE A 3 INCH LARGER DIAMETER THAN THE DEFLECTION SLEEVE DIAMETER AND A MAXIMUM DEPTH OF HALF OF THE DEFLECTION SLEEVE LENGTH. THE DEFLECTION FITTING WILL BE CENTERED IN THE OPENING AND EMBEDDED IN THE CONCRETE ONLY UP TO THE DEFLECTION FITTING CENTER.
4. EXPANSION/DEFLECTION COUPLING SHALL ACCOMMODATE AN EXPANSION RANGE OF 10.4".



CONDUIT SUPPORT

N.T.S.



NORTHBOUND TO SOUTHBOUND TRANSITION

ELEVATION

LIGHTING SHEET 20 OF 22

REVISIONS	
NAME	DATE

ILLINOIS DEPARTMENT OF TRANSPORTATION
 ABRAHAM LINCOLN MEMORIAL BRIDGE
 OVER THE ILLINOIS RIVER
 F.A.I. ROUTE 39
 PARAPET LIGHT MOUNTING
 AND CONDUIT PLAN

SCALE: NONE
 DATE

DRAWN BY DJK
 CHECKED BY GHT