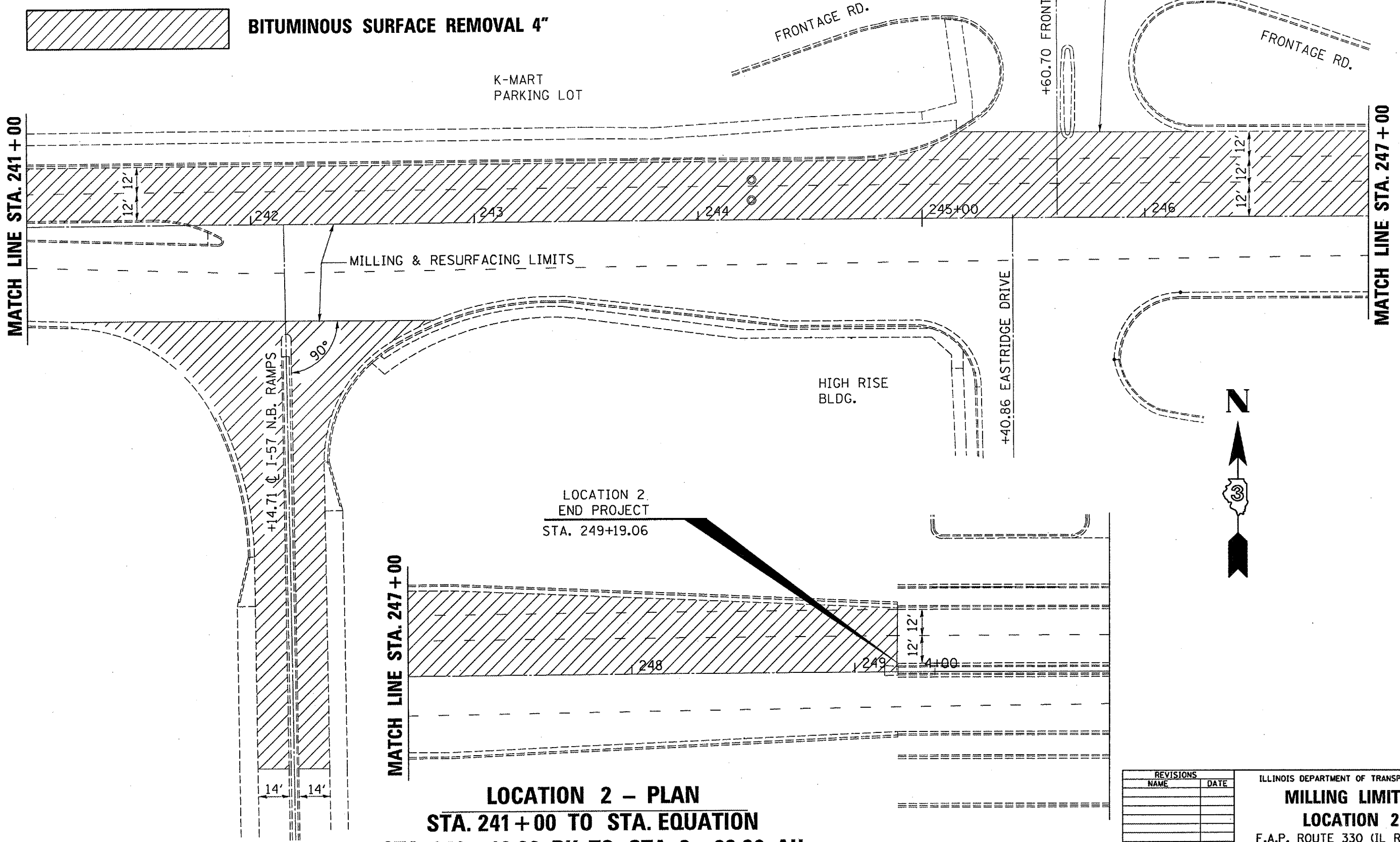


F.A.P. RTE.	SECTION	COUNTY	TOTAL SHEETS	SHEET NO.
330	*	KANKAKEE	24	15

* (11X-2)RS-1 & (11,1)RS-4



LOCATION 2 - PLAN
STA. 241+00 TO STA. EQUATION
STA. 249+19.06 BK. TO STA. 3+83.36 AH

REVISIONS	
NAME	DATE

ILLINOIS DEPARTMENT OF TRANSPORTATION
MILLING LIMITS
LOCATION 2
 F.A.P. ROUTE 330 (IL ROUTE 17)
 SECTION (11X-2)RS-1 & (11,1)RS-4
 KANKAKEE COUNTY

DATE: 06/27/2006
 c:/projects/cmain07/cm305/details.dgn