

INDEX OF SHEETS

1. COVER SHEET, INDEX OF SHEETS & HIGHWAY STANDARDS
2. GENERAL NOTES & COMMITMENTS
3. SUMMARY OF QUANTITIES
4. TYPICAL SECTIONS
5. SCHEDULE OF QUANTITIES
6. ALIGNMENT TIES & BENCHMARKS
7. PLAN & PROFILE
8. TRAFFIC CONTROL STAGING PLAN
9. RIGHT-OF-WAY PLAN
- 10.-19. STRUCTURE PLAN
- 20.-21. EXISTING BRIDGE PLANS
- 22.-25. MISC. DETAILS
- 26.-34. CROSS SECTIONS

HIGHWAY STANDARDS

- | | |
|-----------|--|
| 000001-04 | STANDARD SYMBOLS, ABBREVIATIONS AND PATTERNS |
| 001001 | AREAS OF REINFORCEMENT REBARS |
| 001006 | DECIMAL OF AN INCH AND OF A FOOT |
| 280001-02 | TEMPORARY EROSION CONTROL SYSTEMS |
| 353001-02 | PCC BASE COURSE WITH BITUMINOUS CONCRETE BINDER AND SURFACE COURSES |
| 420401-05 | BRIDGE APPROACH PAVEMENT |
| 515001-02 | NAME PLATE FOR BRIDGES |
| 542401 | METAL END SECTION FOR PIPE CULVERTS |
| 601001 | SUB-SURFACE DRAINS |
| 602301-01 | INLET-TYPE A |
| 604011-02 | FRAME AND GRATE TYPE 3V |
| 606001-02 | CONCRETE CURB TYPE B AND COMBINATION CONCRETE CURB AND GUTTER |
| 630001-06 | STEEL PLATE BEAM GUARDRAIL |
| 630301-03 | SHOULDER WIDENING FOR TYPE 1 (SPECIAL) GUARDRAIL TERMINALS |
| 631031-05 | TRAFFIC BARRIER TERMINAL, TYPE 6 |
| 631032-02 | TRAFFIC BARRIER TERMINAL, TYPE 6A |
| 635006-02 | REFLECTOR AND TERMINAL MARKER PLACEMENT |
| 635011-01 | REFLECTOR MARKER AND MOUNTING DETAILS |
| 701006-02 | OFF-RD OPERATIONS, 2L, 2W, 4.5 m (15') TO 600 mm (24") FROM PAVEMENT EDGE |
| 701011-01 | OFF-RD MOVING OPERATIONS, 2L, 2W, DAY ONLY |
| 701101-01 | OFF-RD OPERATIONS, MULTILANE, 4.5 m (15') TO 600 mm (24") FROM PAVEMENT EDGE |
| 701201-02 | LANE CLOSURE, 2L, 2W, DAY ONLY, FOR SPEEDS ≥ 45 MPH |
| 701206-01 | LANE CLOSURE, 2L, 2W, NIGHT ONLY, FOR SPEEDS ≥ 45 MPH |
| 701301-02 | LANE CLOSURE, 2L, 2W, SHORT TIME OPERATIONS |
| 701311-02 | LANE CLOSURE 2L, 2W MOVING OPERATIONS - DAY ONLY |
| 701321-08 | LANE CLOSURE, 2L, 2W, BRIDGE REPAIR WITH BARRIER |
| 701501-03 | URBAN LANE CLOSURE, 2L, 2W, UNDIVIDED |
| 701801-03 | LANE CLOSURE MULTI LANE 1W OR 2W CROSSWALK OR SIDEWALK CLOSURE |
| 702001-06 | TRAFFIC CONTROL DEVICES |
| 704001-02 | TEMPORARY CONCRETE BARRIER |
| 780001-11 | TYPICAL PAVEMENT MARKINGS |
| 781001-02 | TYPICAL APPLICATIONS RAISED REFLECTIVE PAVEMENT MARKERS |

MICROFILMED _____
 REL NUMBER _____
 AWARDED _____
 RESIDENT ENGINEER _____
 AS BUILT CHANGES WERE MADE
 ON THE FOLLOWING SHEETS _____

DISTRICT 3 NO. (815) 434-6131
 PROJECT ENGINEER: DAN DRAPER
 UNIT CHIEF: MICHELE LINDEMANN
CONTRACT NO. 66661

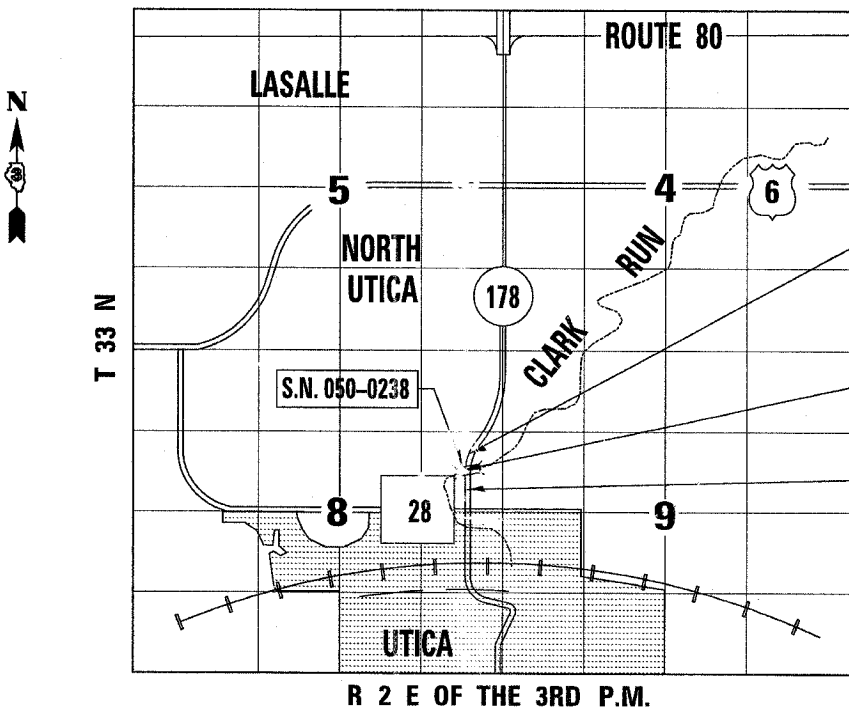
J.U.L.I.E.
 JOINT UTILITY LOCATION INFORMATION FOR EXCAVATION
 1-800-892-0123

STATE OF ILLINOIS
 DEPARTMENT OF TRANSPORTATION
 DIVISION OF HIGHWAYS

**PROPOSED
 HIGHWAY PLANS**

F.A.S. ROUTE 1279 (IL RTE. 178)
 SECTION (P-10)BR
 PROJECT RS-1279(105)
 LASALLE COUNTY
 C-93-053-05

BRIDGE REPLACEMENT AT CLARK RUN CREEK



LOCATION MAP

SCALE: 1" = 1 MILE
 GROSS LENGTH OF PROJECT = 415 FEET = 0.079 MI.
 NET LENGTH OF PROJECT = 415 FEET = 0.079 MI.

**BEGIN IMPROVEMENT
 STA. 149 + 22.50**

STRUCTURE NO. 050-0085 AT STA. 151+38.00 CARRYING FAS 1279 (IL RTE. 178) OVER CLARK RUN CREEK TO BE REMOVED AND REPLACED. A NEW 43'-4" WIDE THREE SIDED PRE-CAST STRUCTURE NO. 050-0238 TO BE CONSTRUCTED WITH A CLEAR SPAN OF 32' @ 151+38.00.

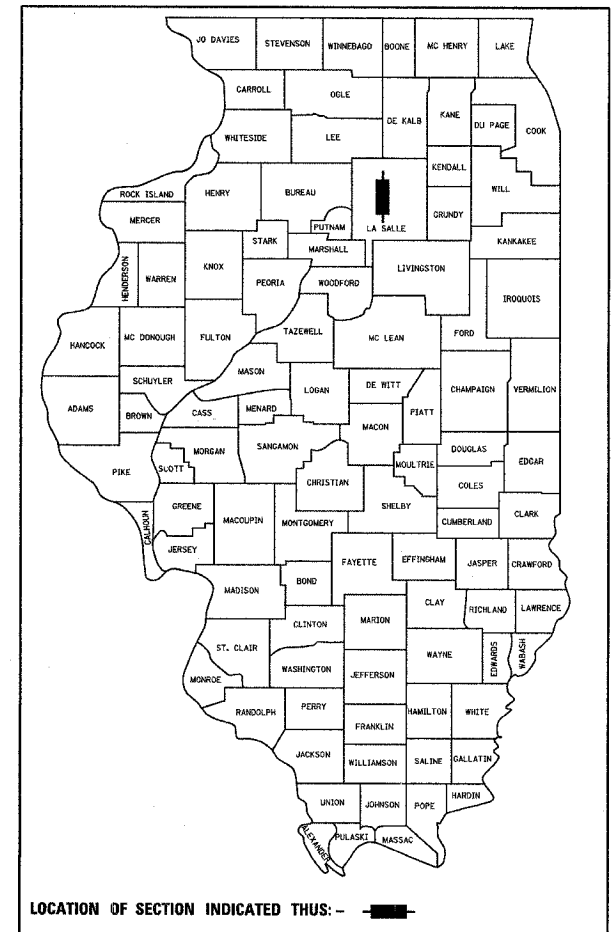
**END IMPROVEMENT
 STA. 153 + 37.50**



Ali A. Gharamti 7/5/06
 ALI A. GHARAMTI
 ILLINOIS PROFESSIONAL ENGINEER NO. 062-046049
 RENEWAL DATE: 11/30/2007

F.A.S. RTE.	SECTION	COUNTY	TOTAL SHEETS	SHEET NO.
1279	(P-10)BR	LASALLE	34	1

CONTRACT NO. 66661
 P-93-031-99
 D-93-039-00



LOCATION OF SECTION INDICATED THUS: - [black rectangle] -

STATE OF ILLINOIS
 DEPARTMENT OF TRANSPORTATION
 DIVISION OF HIGHWAYS

SUBMITTED Aug 25, 2006

Jim P. Minton
 DEPUTY DIRECTOR OF HIGHWAYS, REGION ENGINEER

October 13, 2006
Mike Wine
 ENGINEER OF DESIGN AND ENVIRONMENT

October 13, 2006
Milton P. Swartz
 DIRECTOR OF HIGHWAYS, CHIEF ENGINEER

**PRINTED BY THE AUTHORITY
 OF THE STATE OF ILLINOIS**