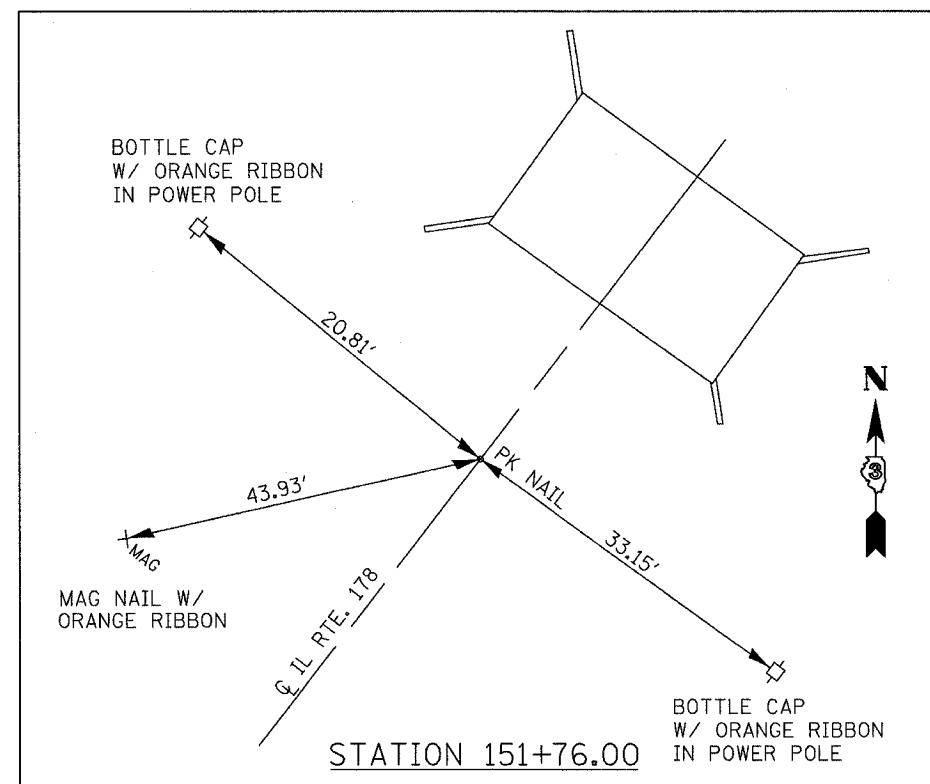
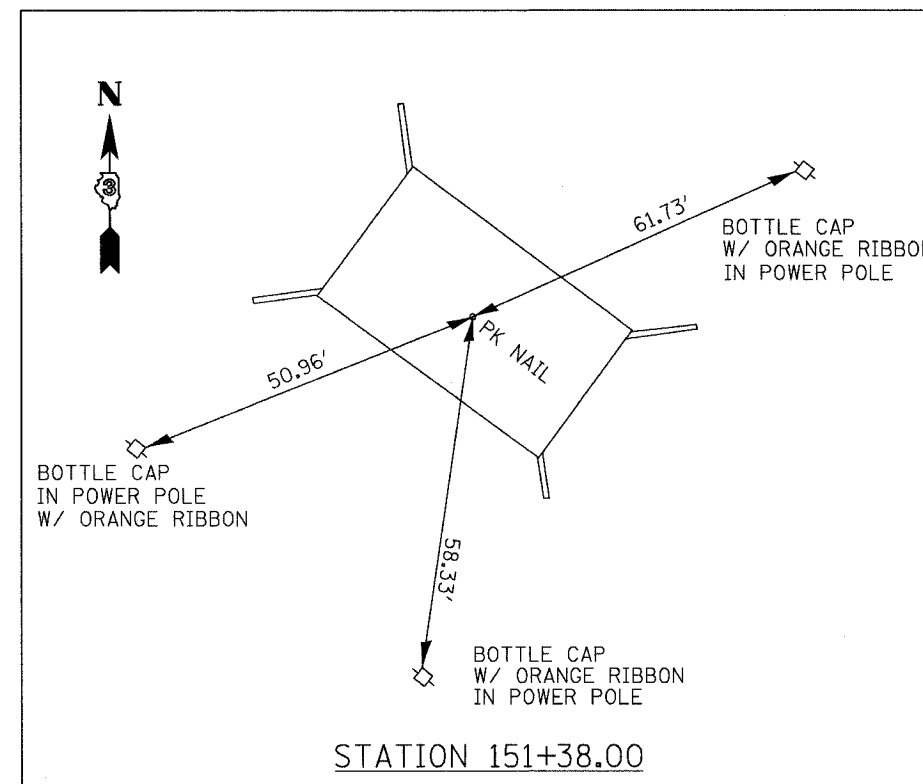
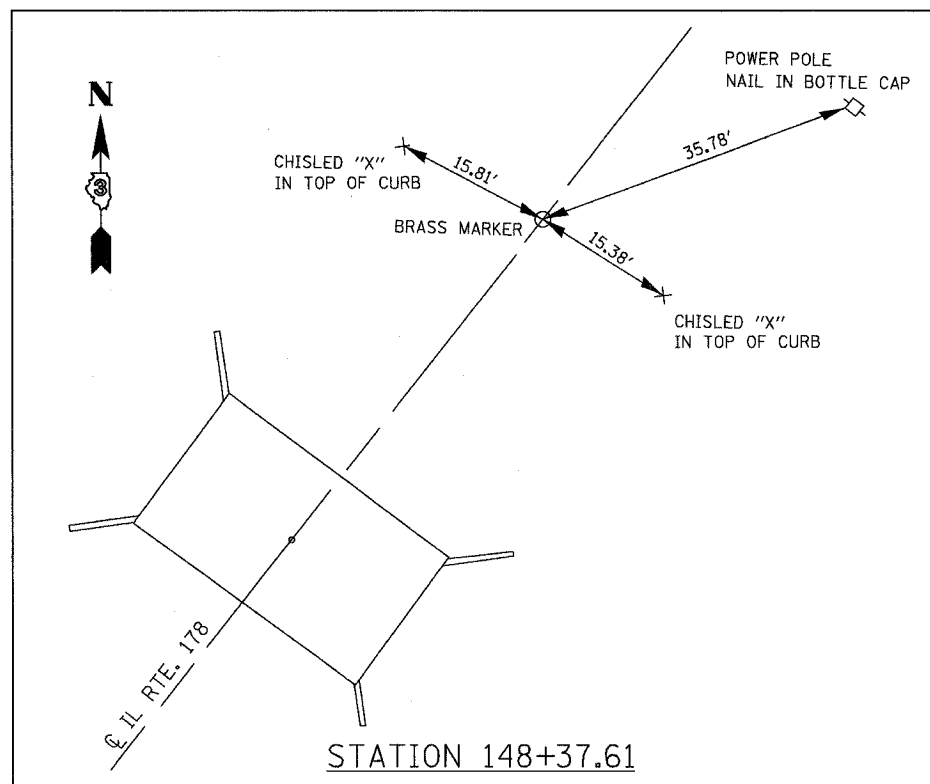


F.A.S. RTE.	SECTION	COUNTY	TOTAL SHEETS	SHEET NO.
1279	(P-10)BR	LASALLE	34	6
STA. N/A		TO STA. N/A		
FED. ROAD DIST. NO. 7		ILLINOIS FED. AID PROJECT		

CONTRACT NO. 66661



BENCHMARKS:

- BRASS DISK
STA. 148+37.61, 0.00' RT
ELEV.=513.32
- CHISLED "□"
S.E. WINGWALL
ELEV.=504.10

REVISIONS	
NAME	DATE

ILLINOIS DEPARTMENT OF TRANSPORTATION

**ALIGNMENT TIES
AND BENCHMARKS**

SCALE: VERT. NONE
HORIZ. NONE
DATE JULY 3, 2006

DRAWN BY DAC
CHECKED BY SMK