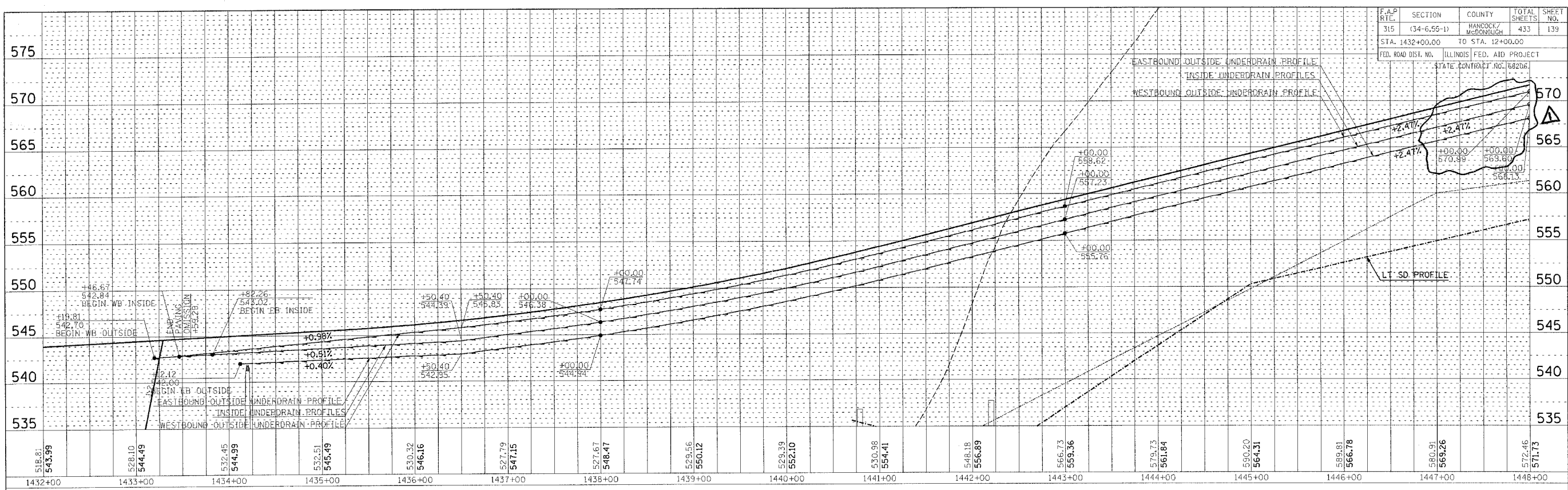
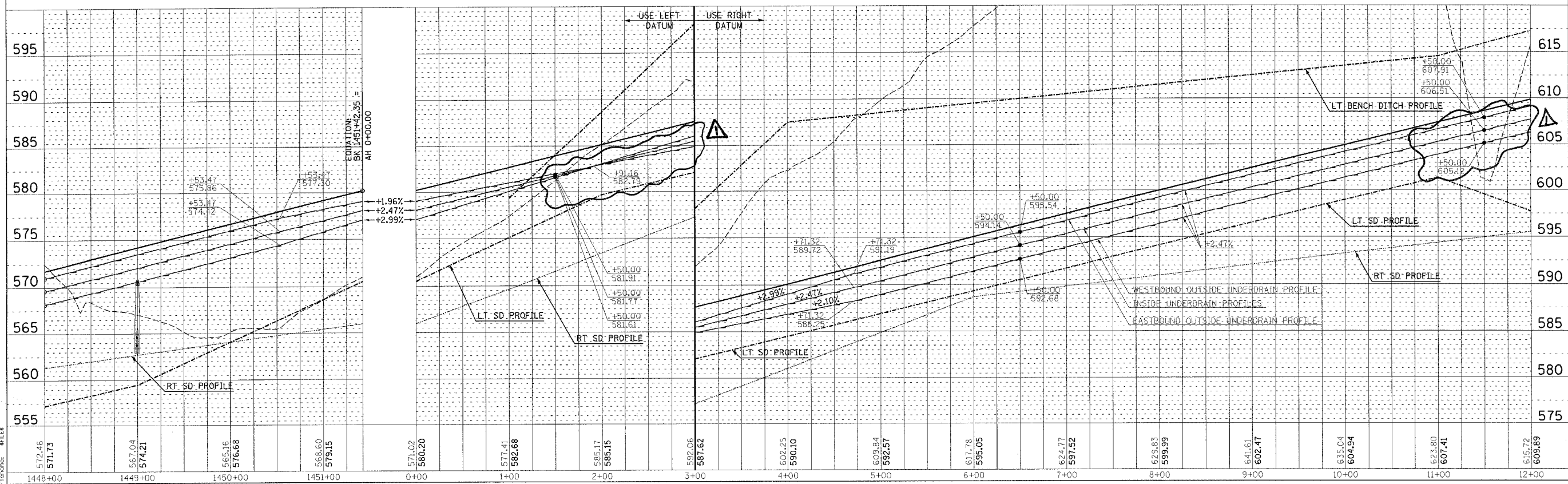


F.A.P. RTCL	SECTION	COUNTY	TOTAL SHEETS	SHEET NO.
315	(34-6,55-1)	HANCOCK/McDONOUGH	433	139
STA. 1432+00.00		TO STA. 12+00.00		
FED. ROAD DIST. NO.		ILLINOIS FED. AID PROJECT		
		STATE CONTRACT NO. 68206		

PLAN
 REVISIONS
 DATE
 BY
 NO. 1
 NO. 2
 NO. 3
 NO. 4
 NO. 5
 NO. 6
 NO. 7
 NO. 8
 NO. 9
 NO. 10
 NO. 11
 NO. 12
 NO. 13
 NO. 14
 NO. 15
 NO. 16
 NO. 17
 NO. 18
 NO. 19
 NO. 20
 NO. 21
 NO. 22
 NO. 23
 NO. 24
 NO. 25
 NO. 26
 NO. 27
 NO. 28
 NO. 29
 NO. 30
 NO. 31
 NO. 32
 NO. 33
 NO. 34
 NO. 35
 NO. 36
 NO. 37
 NO. 38
 NO. 39
 NO. 40
 NO. 41
 NO. 42
 NO. 43
 NO. 44
 NO. 45
 NO. 46
 NO. 47
 NO. 48
 NO. 49
 NO. 50
 NO. 51
 NO. 52
 NO. 53
 NO. 54
 NO. 55
 NO. 56
 NO. 57
 NO. 58
 NO. 59
 NO. 60
 NO. 61
 NO. 62
 NO. 63
 NO. 64
 NO. 65
 NO. 66
 NO. 67
 NO. 68
 NO. 69
 NO. 70
 NO. 71
 NO. 72
 NO. 73
 NO. 74
 NO. 75
 NO. 76
 NO. 77
 NO. 78
 NO. 79
 NO. 80
 NO. 81
 NO. 82
 NO. 83
 NO. 84
 NO. 85
 NO. 86
 NO. 87
 NO. 88
 NO. 89
 NO. 90
 NO. 91
 NO. 92
 NO. 93
 NO. 94
 NO. 95
 NO. 96
 NO. 97
 NO. 98
 NO. 99
 NO. 100



PROFILE
 DATE
 BY
 NO. 1
 NO. 2
 NO. 3
 NO. 4
 NO. 5
 NO. 6
 NO. 7
 NO. 8
 NO. 9
 NO. 10
 NO. 11
 NO. 12
 NO. 13
 NO. 14
 NO. 15
 NO. 16
 NO. 17
 NO. 18
 NO. 19
 NO. 20
 NO. 21
 NO. 22
 NO. 23
 NO. 24
 NO. 25
 NO. 26
 NO. 27
 NO. 28
 NO. 29
 NO. 30
 NO. 31
 NO. 32
 NO. 33
 NO. 34
 NO. 35
 NO. 36
 NO. 37
 NO. 38
 NO. 39
 NO. 40
 NO. 41
 NO. 42
 NO. 43
 NO. 44
 NO. 45
 NO. 46
 NO. 47
 NO. 48
 NO. 49
 NO. 50
 NO. 51
 NO. 52
 NO. 53
 NO. 54
 NO. 55
 NO. 56
 NO. 57
 NO. 58
 NO. 59
 NO. 60
 NO. 61
 NO. 62
 NO. 63
 NO. 64
 NO. 65
 NO. 66
 NO. 67
 NO. 68
 NO. 69
 NO. 70
 NO. 71
 NO. 72
 NO. 73
 NO. 74
 NO. 75
 NO. 76
 NO. 77
 NO. 78
 NO. 79
 NO. 80
 NO. 81
 NO. 82
 NO. 83
 NO. 84
 NO. 85
 NO. 86
 NO. 87
 NO. 88
 NO. 89
 NO. 90
 NO. 91
 NO. 92
 NO. 93
 NO. 94
 NO. 95
 NO. 96
 NO. 97
 NO. 98
 NO. 99
 NO. 100



\$\$\$
 FAP 315 (IL 336) PIPE UNDERDRAIN PROFILES - STA 1432+00.00 TO STA 12+00.00
 Δ REVISED 11/106