

F.A.P. RTE.	SECTION	COUNTY	TOTAL SHEETS	SHEET NO.
315	(34-6,55-1)	HANCOCK/MCDONOUGH	433	42
STA. 31+00		TO STA. 61+00		
FED. ROAD DIST. NO.	ILLINOIS	FED. AID PROJECT		
STATE CONTRACT NO. 68206				

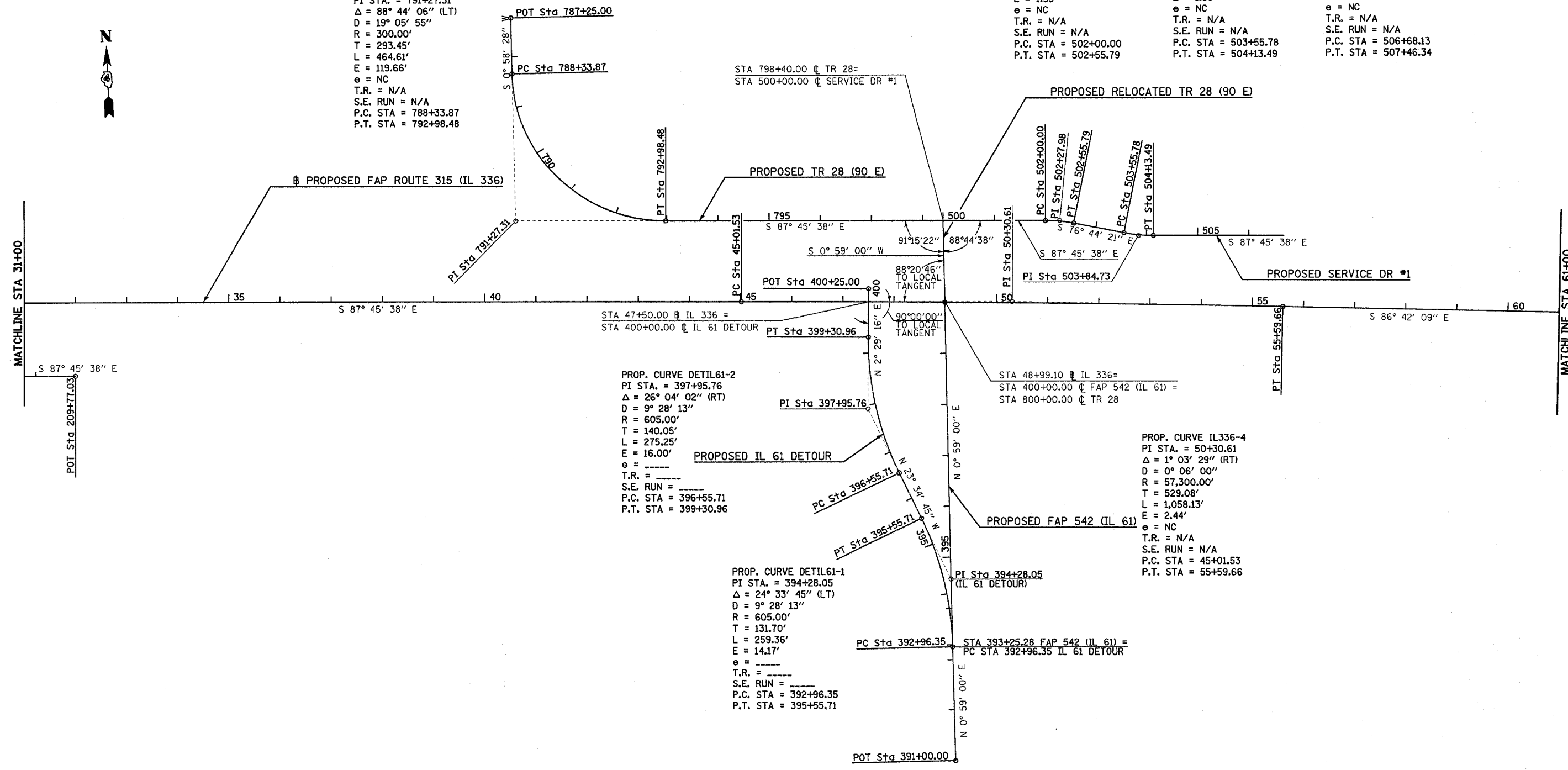


PROP. CURVE TR28-1
 PI STA. = 791+27.31
 $\Delta = 88^\circ 44' 06''$ (LT)
 $D = 19^\circ 05' 55''$
 $R = 300.00'$
 $T = 293.45'$
 $L = 464.61'$
 $E = 119.66'$
 $e = NC$
 T.R. = N/A
 S.E. RUN = N/A
 P.C. STA = 788+33.87
 P.T. STA = 792+98.48

PROP. CURVE SD01-1
 PI STA. = 502+27.98
 $\Delta = 11^\circ 01' 17''$ (RT)
 $D = 19^\circ 45' 26''$
 $R = 290.00'$
 $T = 27.98'$
 $L = 55.78'$
 $E = 1.35'$
 $e = NC$
 T.R. = N/A
 S.E. RUN = N/A
 P.C. STA = 502+00.00
 P.T. STA = 502+55.79

PROP. CURVE SD01-2
 PI STA. = 503+84.73
 $\Delta = 11^\circ 01' 17''$ (LT)
 $D = 19^\circ 05' 55''$
 $R = 300.00'$
 $T = 28.94'$
 $L = 57.71'$
 $E = 1.39'$
 $e = NC$
 T.R. = N/A
 S.E. RUN = N/A
 P.C. STA = 503+55.78
 P.T. STA = 504+13.49

PROP. CURVE SD01-3
 PI STA. = 507+17.80
 $\Delta = 89^\circ 37' 12''$ (LT)
 $D = 114^\circ 35' 30''$
 $R = 50.00'$
 $T = 49.67'$
 $L = 78.21'$
 $E = 20.48'$
 $e = NC$
 T.R. = N/A
 S.E. RUN = N/A
 P.C. STA = 506+68.13
 P.T. STA = 507+46.34

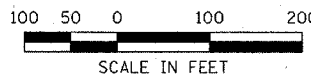


PROP. CURVE DETIL61-2
 PI STA. = 397+95.76
 $\Delta = 26^\circ 04' 02''$ (RT)
 $D = 9^\circ 28' 13''$
 $R = 605.00'$
 $T = 140.05'$
 $L = 275.25'$
 $E = 16.00'$
 $e = NC$
 T.R. = N/A
 S.E. RUN = N/A
 P.C. STA = 396+55.71
 P.T. STA = 399+30.96

PROP. CURVE DETIL61-1
 PI STA. = 394+28.05
 $\Delta = 24^\circ 33' 45''$ (LT)
 $D = 9^\circ 28' 13''$
 $R = 605.00'$
 $T = 131.70'$
 $L = 259.36'$
 $E = 14.17'$
 $e = NC$
 T.R. = N/A
 S.E. RUN = N/A
 P.C. STA = 392+96.35
 P.T. STA = 395+55.71

PROP. CURVE IL336-4
 PI STA. = 50+30.61
 $\Delta = 1^\circ 03' 29''$ (RT)
 $D = 0^\circ 06' 00''$
 $R = 57,300.00'$
 $T = 529.08'$
 $L = 1,058.13'$
 $E = 2.44'$
 $e = NC$
 T.R. = N/A
 S.E. RUN = N/A
 P.C. STA = 45+01.53
 P.T. STA = 55+59.66

Plot Date: 7/15/2006
 Plot Time: 12:43:41 PM
 Plot User: jrb
 Pen Table: h001.tbl
 File Name: I:\030333\road\1\constr\junction_alonsa\011.nc03m31.dgn



HORIZONTAL CONTROL - FAP ROUTE 315 (IL 336) STA 31+00 TO STA 61+00