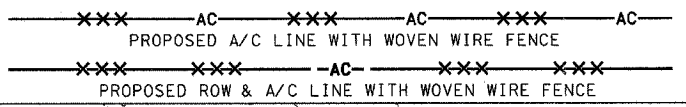


F.A.P. RTE.	SECTION	COUNTY	TOTAL SHEETS	SHEET NO.
315	(34-6,55-1)	HANCOCK/MCDONOUGH	433	66
STA.		TO STA.		
FED. ROAD DIST. NO.		ILLINOIS FED. AID PROJECT		
STATE CONTRACT NO. 68206				

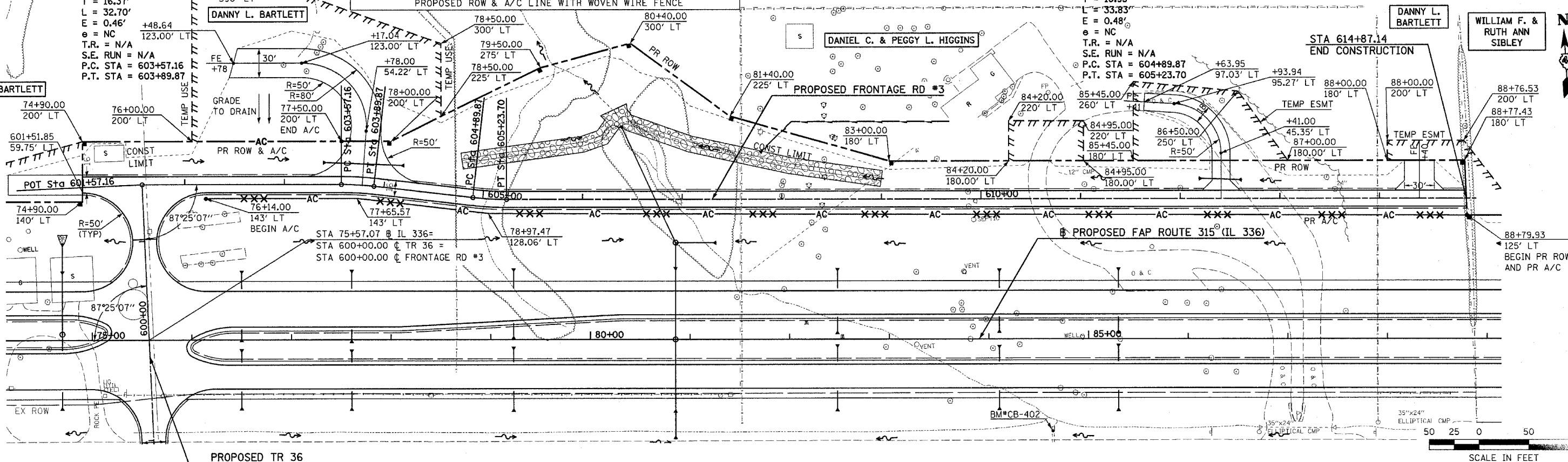
PROP. CURVE FR03-1
 PI STA. = 603+73.53
 $\Delta = 6^\circ 27' 40''$ (RT)
 $R = 19^\circ 45' 26''$
 $D = 290.00'$
 $T = 16.37'$
 $L = 32.70'$
 $E = 0.46'$
 $e = NC$
 $T.R. = N/A$
 $S.E. RUN = N/A$
 $P.C. STA = 603+57.16$
 $P.T. STA = 603+89.87$

LEGEND OF NON-STANDARD SYMBOLS

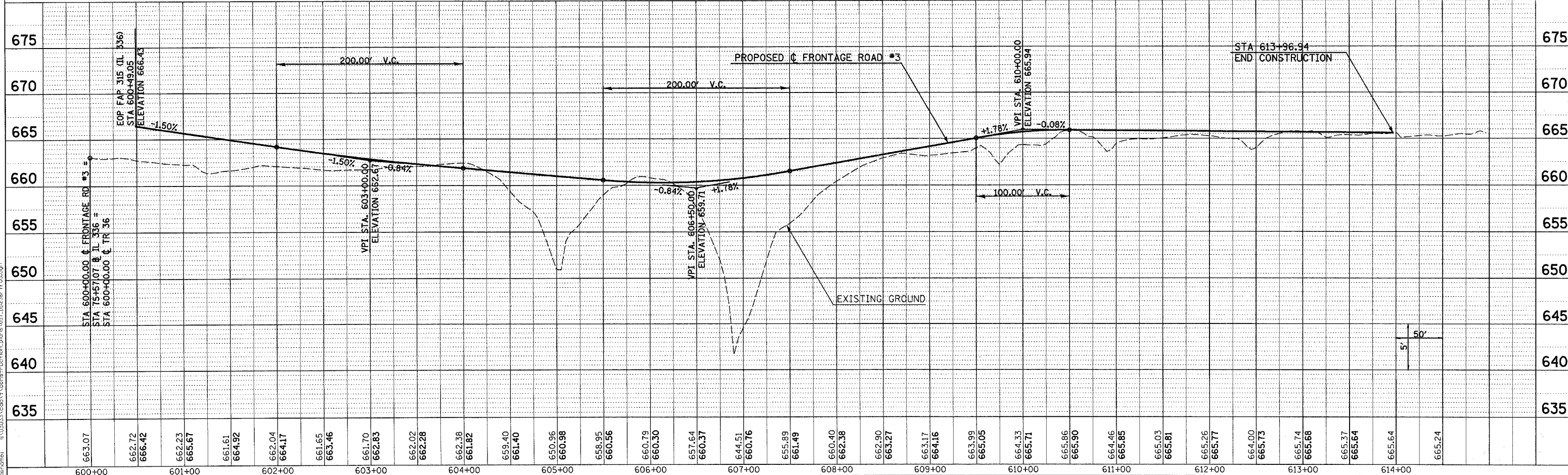


PROP. CURVE FR03-2
 PI STA. = 605+06.80
 $\Delta = 6^\circ 27' 40''$ (LT)
 $R = 19^\circ 05' 55''$
 $D = 300.00'$
 $T = 16.93'$
 $L = 33.83'$
 $E = 0.48'$
 $e = NC$
 $T.R. = N/A$
 $S.E. RUN = N/A$
 $P.C. STA = 604+89.87$
 $P.T. STA = 605+23.70$

PLAN	DATE
BY	
REVISIONS	
NO.	DESCRIPTION



PROFILE	DATE
BY	
REVISIONS	
NO.	DESCRIPTION



ROADWAY PLAN & PROFILE - FRONTAGE ROAD #3