

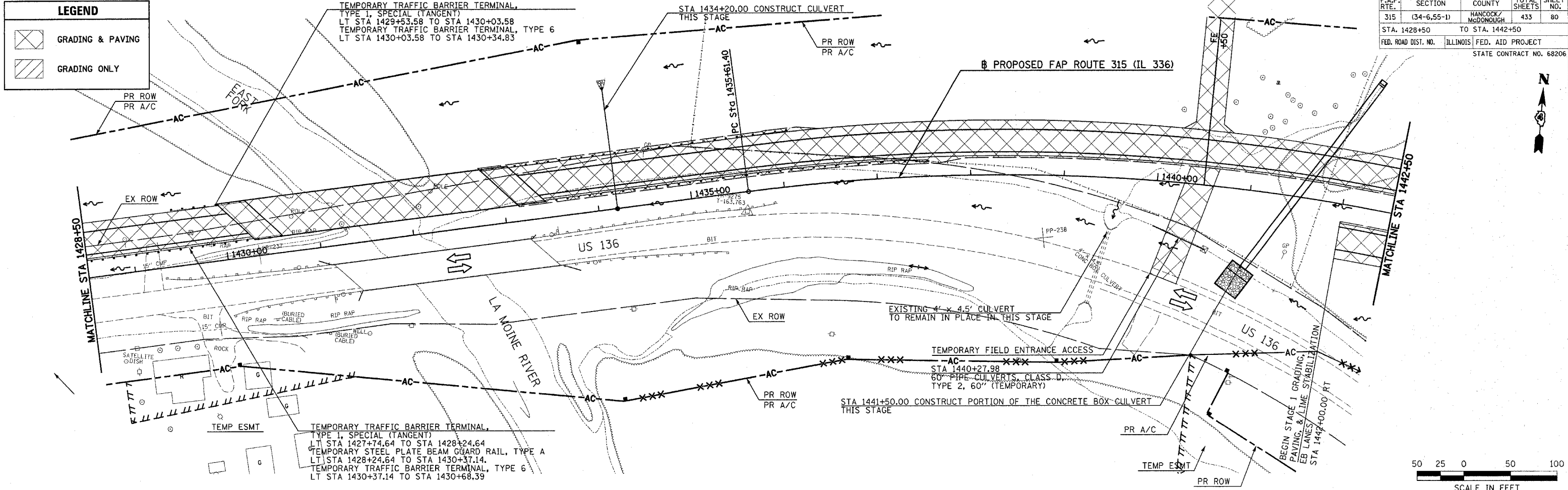
F.A.P. RTE.	SECTION	COUNTY	TOTAL SHEETS	SHEET NO.
315	(34-6,55-1)	HANCOCK/McDONOUGH	433	80
STA. 1428+50		TO STA. 1442+50		
FED. ROAD DIST. NO.		ILLINOIS FED. AID PROJECT		
STATE CONTRACT NO. 68206				

LEGEND

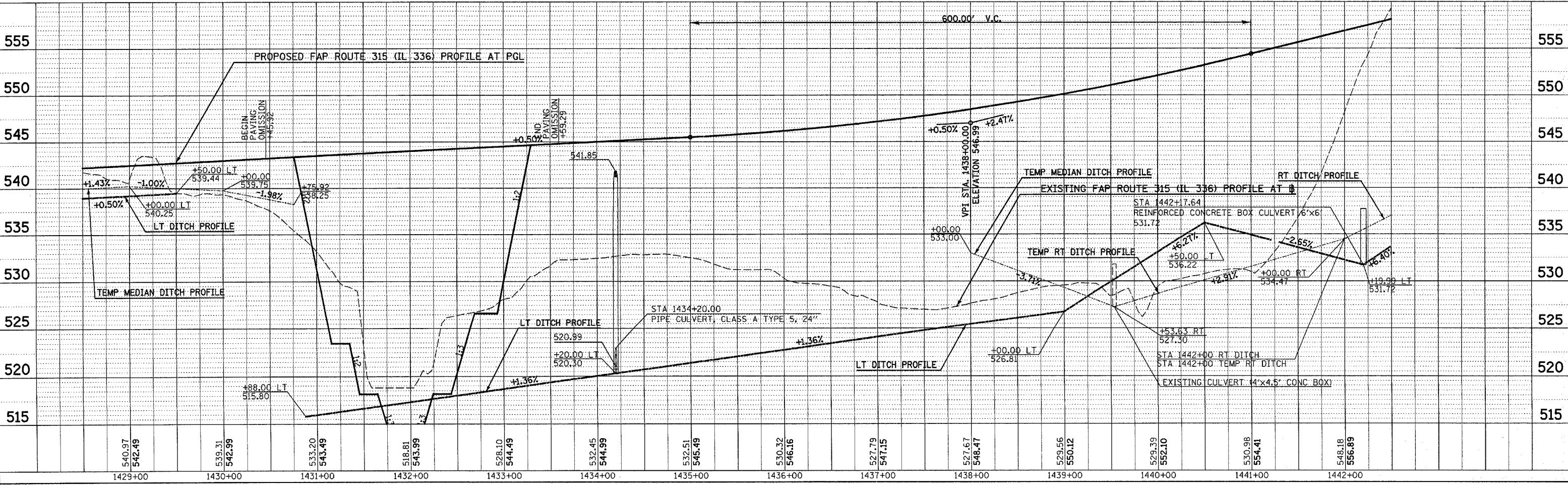
GRADING & PAVING

GRADING ONLY

DATE	
BY	
REVISION	
NO.	
DESCRIPTION	
DATE	
BY	
REVISION	
NO.	
DESCRIPTION	
DATE	
BY	
REVISION	
NO.	
DESCRIPTION	



DATE	
BY	
REVISION	
NO.	
DESCRIPTION	
DATE	
BY	
REVISION	
NO.	
DESCRIPTION	
DATE	
BY	
REVISION	
NO.	
DESCRIPTION	



Plot Date: 7/18/2006
 Plot Time: 3:25:59 PM
 Plotter: bscmndt
 File Name: I:\03033\cd\1\constr\action_plans\051_csl\051p1428.dgn

MAINTENANCE OF TRAFFIC (STAGE 1) PLAN & PROFILE - FAP ROUTE 315 (IL 336) STA 1428+50 TO STA 1442+50