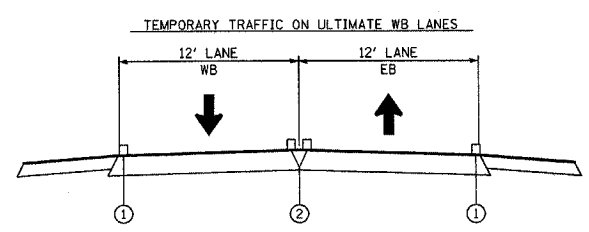
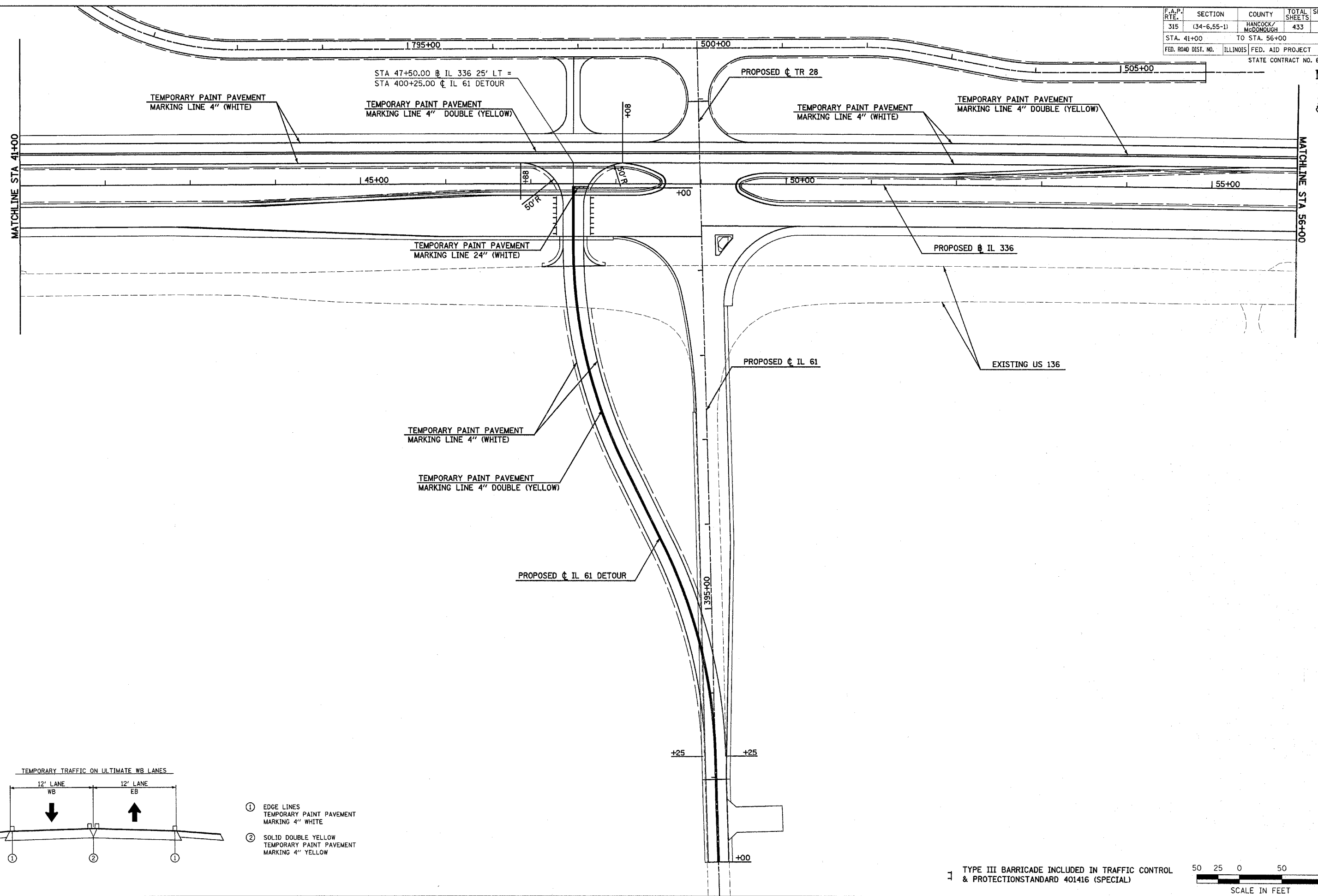


F.A.P. RTE.	SECTION	COUNTY	TOTAL SHEETS	SHEET NO.
315	(34-6,55-1)	HANCOCK/MCDONOUGH	433	110
STA. 41+00		TO STA. 56+00		
FED. ROAD DIST. NO.	ILLINOIS	FED. AID PROJECT		
STATE CONTRACT NO. 68206				



- ① EDGE LINES
TEMPORARY PAINT PAVEMENT
MARKING 4" WHITE
- ② SOLID DOUBLE YELLOW
TEMPORARY PAINT PAVEMENT
MARKING 4" YELLOW

TYPE III BARRICADE INCLUDED IN TRAFFIC CONTROL & PROTECTION STANDARD 401416 (SPECIAL)

50 25 0 50 100
SCALE IN FEET

CONSTRUCTION STAGING (STAGE 2) TEMPORARY PAVEMENT MARKING - FAP ROUTE 315 (IL 336) STA 41+00 TO 56+00

Plot Date: 7/18/2006
 Plot Time: 3:27:01 PM
 Plotted By: bchmidt
 Pen Table: 1001.tbl
 File Name: R:\2005\accnt\construction\plans\081\ast\pmt0240.dgn