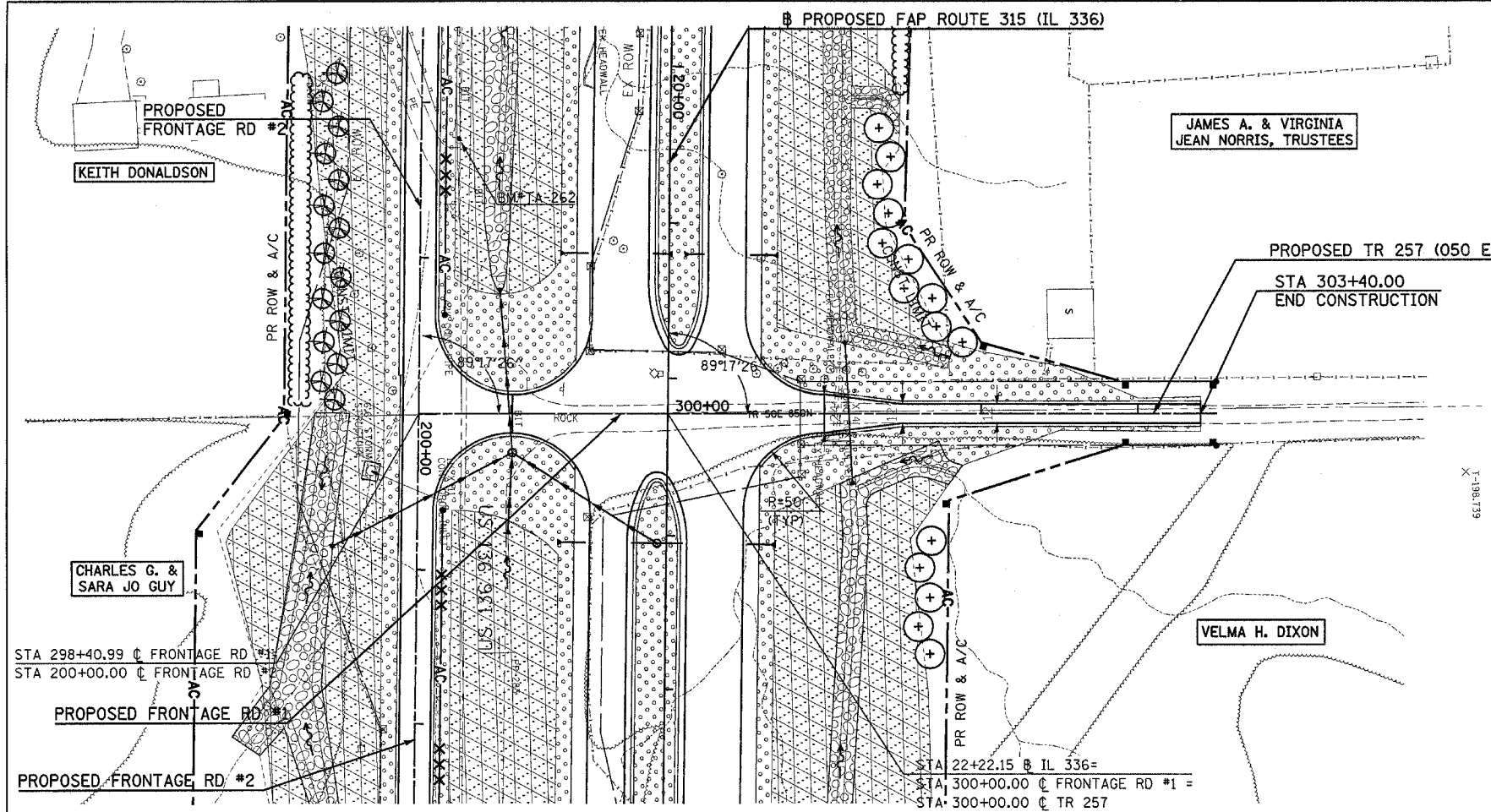
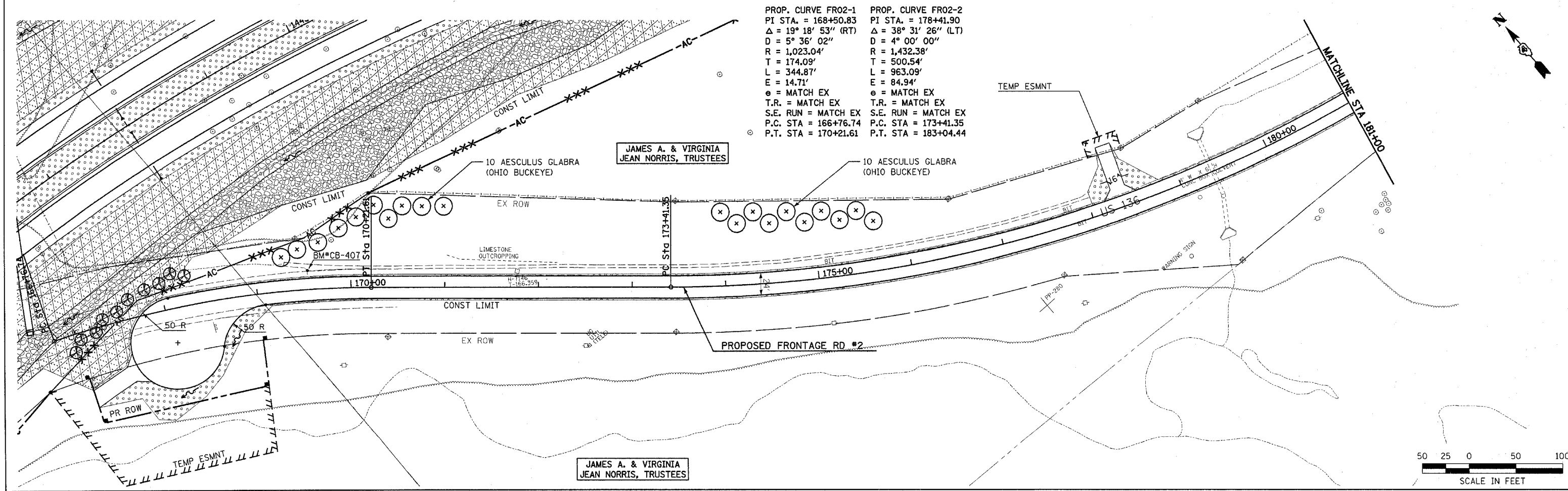


F.A.P. RTE.	SECTION	COUNTY	TOTAL SHEETS	SHEET NO.
315	(34-6.55-1)	HANCOCK/McDONOUGH	433	178
STA.	TO STA.			
FED. ROAD DIST. NO.	ILLINOIS	FED. AID PROJECT	STATE CONTRACT NO. 68206	



PROP. CURVE FRO2-1 PI STA. = 168+50.83 $\Delta = 19^\circ 18' 53''$ (RT) D = 5° 36' 02" R = 1,023.04' T = 174.09' L = 344.87' E = 14.71' e = MATCH EX T.R. = MATCH EX S.E. RUN = MATCH EX P.C. STA = 166+76.74 P.T. STA = 170+21.61	PROP. CURVE FRO2-2 PI STA. = 178+41.90 $\Delta = 38^\circ 31' 26''$ (LT) D = 4° 00' 00" R = 1,432.38' T = 500.54' L = 963.09' E = 84.94' e = MATCH EX T.R. = MATCH EX S.E. RUN = MATCH EX P.C. STA = 173+41.35 P.T. STA = 183+04.44
---	---



Plot Date: 7/18/2006
 Plot Time: 3:50:41 PM
 Plotted By: bsdm101
 Pen Table:
 Plotter: I:\30303\cadd\1\construction\p06e\68.kds\fr01tr257_fr02.dgn