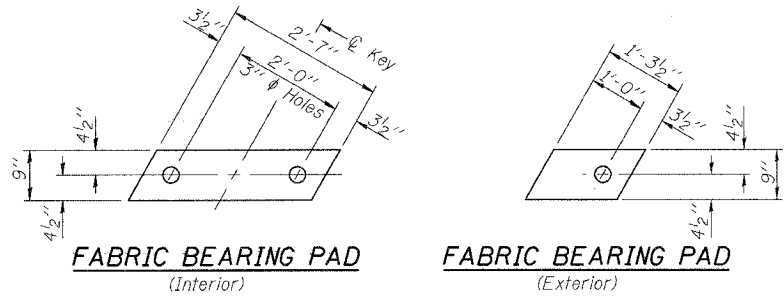


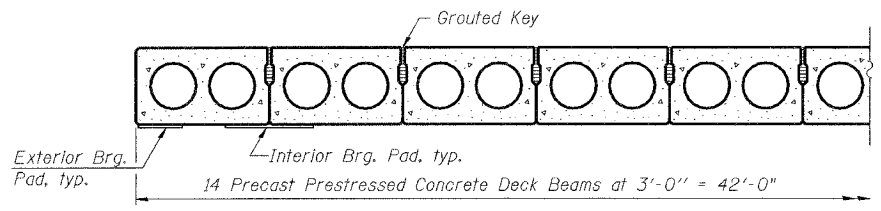
STATE OF ILLINOIS
DEPARTMENT OF TRANSPORTATION

ROUTE NO.	SECTION	COUNTY	TOTAL SHEETS	SHEET NO.
F.A.P. 622	(I28BR)I	FULTON	19	13
FED. ROAD DIST. NO. 7	ILLINOIS	FED. AID PROJECT		

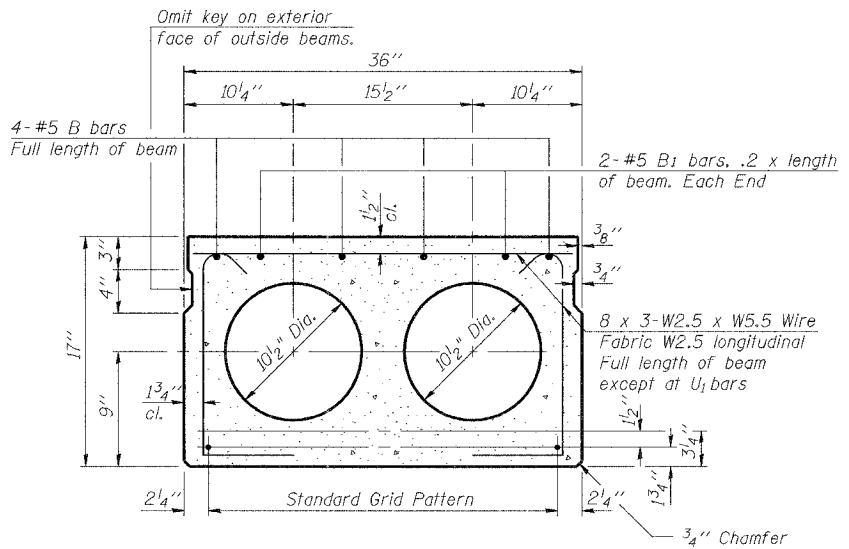
Contract #68483



FIXED

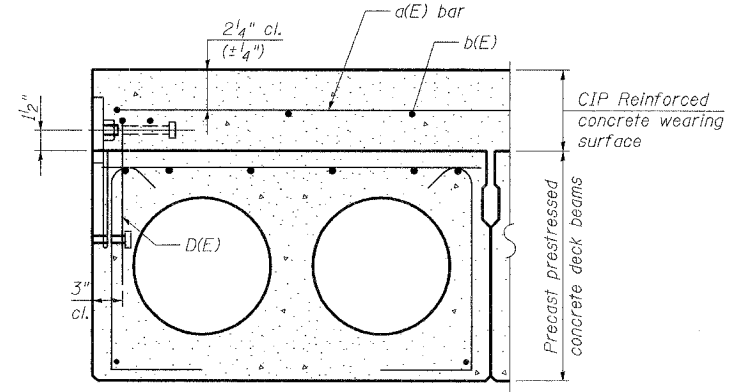


PARTIAL CROSS SECTION

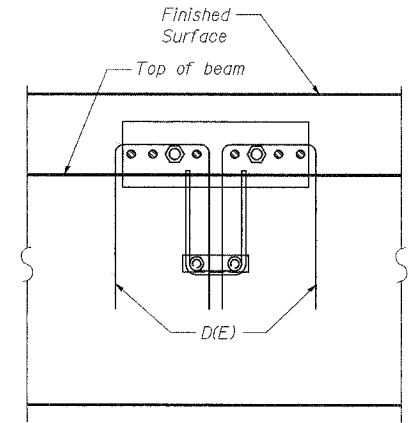


TYPICAL SECTION

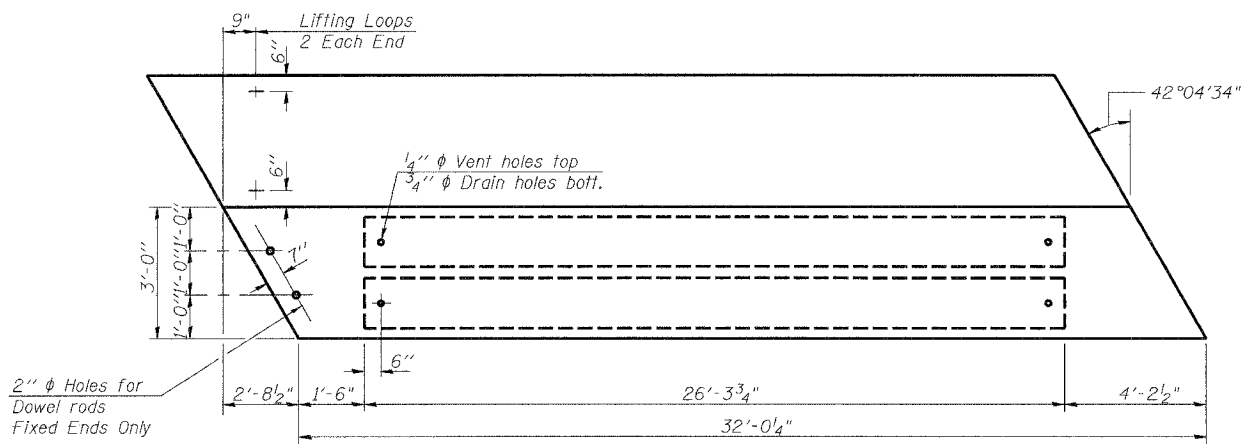
1/2" ϕ Strands, Each Strand Stressed to 30,900 Lbs.
6-Strands 1 3/4" up, 2-Strands 3/4" up
Note: Place strands symmetrically about ϕ of beam.



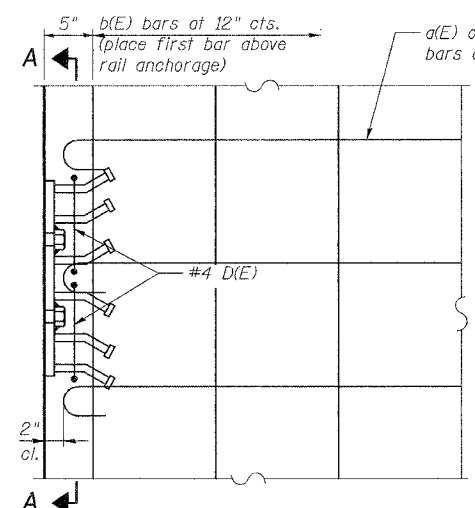
CROSS SECTION



SECTION A-A



PLAN

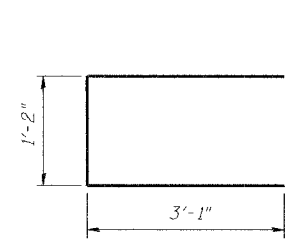


PLAN

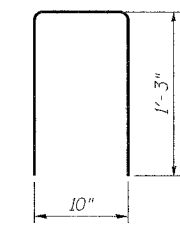
Notes:
The rail anchorage shall be cast with the beam and the wearing surface shall be cast in the field. Formwork necessary for the wearing surface may be secured utilizing the bottom rail anchorage inserts and/or additional inserts cast into the beam. Drilling into the beam will not be permitted.

NOTES

Prestressed steel shall be uncoated high strength, low relaxation 7-wire strand, Grade 270. The nominal diameter shall be 1/2" and the nominal cross-sectional area shall be 0.153 sq. in. Lifting loops shall be 2 - 1/2" ϕ -270 ksi strands, as shown. The bearing seat surfaces shall be adjusted by shimming to assure firm and even bearing. Two 1/8" fabric adjusting shims of the dimensions of the Exterior Bearing Post shall be provided for each bearing. Keyway surfaces shall be cleaned to remove form oil or other bond breaking material prior to shipment of beams. Cleaning shall be done by sandblasting the keyway areas between top of the beam and the bottom edge of the key. Corrosion Inhibitor, as covered in the Special Provisions, shall be used in the concrete for precast prestressed concrete deck beams. Required Release Strength, f'_{ci} , shall be 4,000 psi.



BAR U1



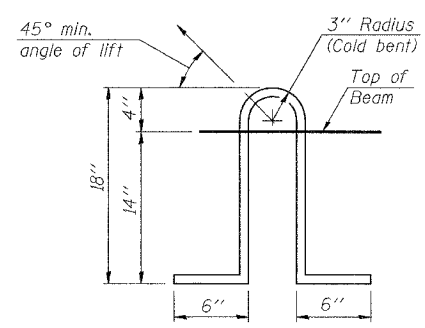
D(E) BAR

BILL OF MATERIAL

Precast Prestressed Concrete Deck Beams (17" Depth)	Sq. Ft.	1355
---	---------	------

SUPERSTRUCTURE
ILLINOIS ROUTE 97 OVER
BIG CREEK TRIBUTARY
F.A.P. RTE 622 SECTION (I28BR)I
FULTON COUNTY
SN 029-0026

DESIGNED BWP	THOUVENOT, WADE & MOERCHEN, INC. ENGINEERS • SURVEYORS • PLANNERS TWM CORPORATE OFFICE 4940 OLD COLLINGSVILLE RD. SPRINGFIELD, ILLINOIS 62220 TEL: (618) 624-4468 FAX: (618) 624-6688 E-MAIL: CORP@TWM-INC.COM
CHECKED ALN	
DRAWN KBF	
CHECKED KPC	



LIFTING LOOP DETAIL