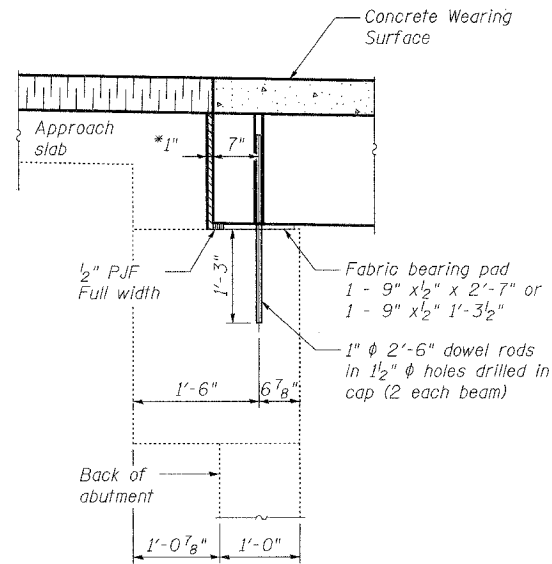


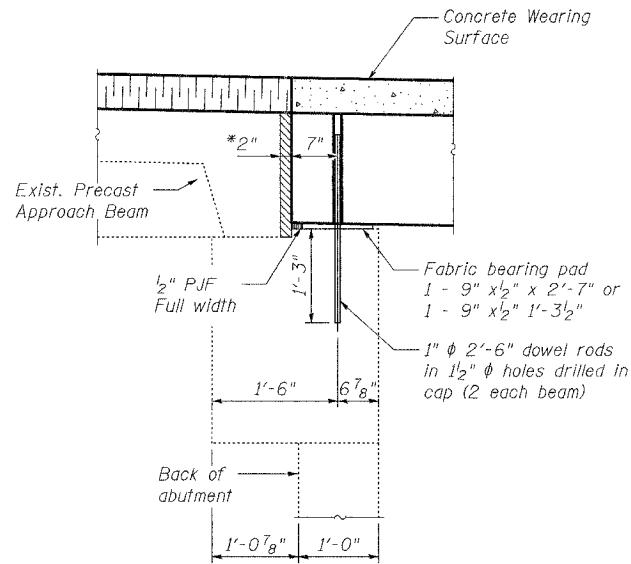
STATE OF ILLINOIS  
DEPARTMENT OF TRANSPORTATION

ROUTE NO.	SECTION	COUNTY	SHEETS	SHEET NO.	SHEET NO. 5 10 SHEETS
F.A.P. 622	(I28BR)I	FULTON	19	14	
FED. ROAD DIST. NO. 7	ILLINOIS	FED. AID PROJECT			

Contract #68483



SECTION THRU NORTH AND SOUTH ABUTMENTS



SECTION THRU NORTH ABUTMENT  
(At Precast Approach Beam)

Notes:

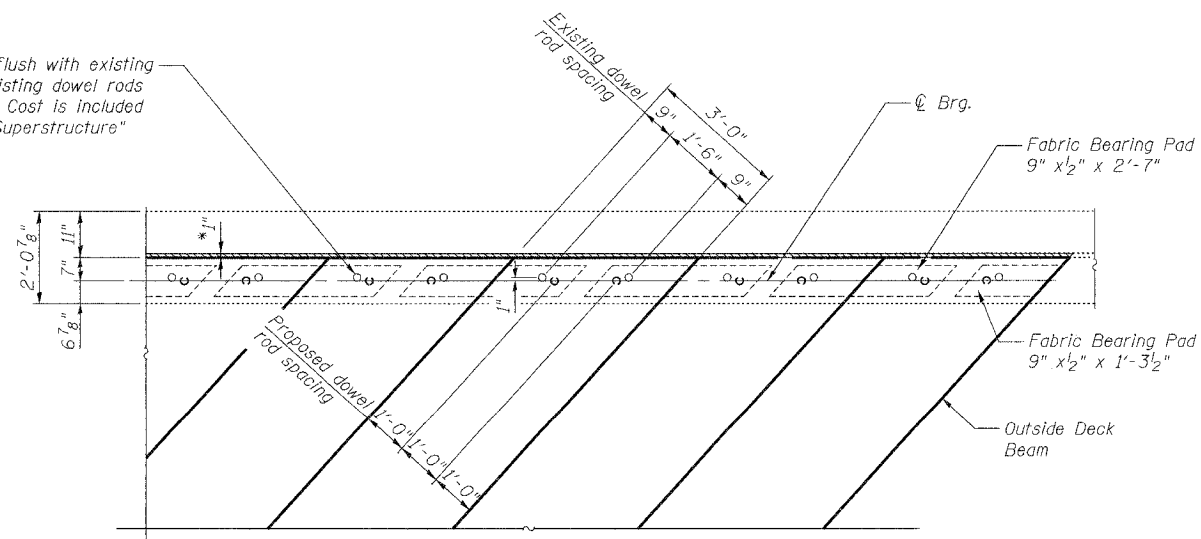
After beams have been erected, holes shall be drilled into substructure and anchor dowels placed. Dowel holes shall be filled with non-shrink grout to top of beam and allowed to cure min. 24 hrs. prior to grouting shear keys.

Dowel rods drilled in cap are included in the Precast Prestressed Concrete Deck Beams (17" depth).

All horizontal dimensions are at right angles to beam ends. See Sheet 4 of 10 for bearing pad details.

\*Joint shall be filled with non-shrink grout. Dimension may vary to accommodate tolerance in beam lengths.

Burn existing dowels rods flush with existing abutment surface. Grind existing dowel rods smooth and set with epoxy. Cost is included with "Removal of Existing Superstructure"



PARTIAL PLAN

**SUPERSTRUCTURE DETAILS**  
**ILLINOIS ROUTE 97 OVER**  
**BIG CREEK TRIBUTARY**  
**F.A.P. RTE 622 SECTION (I28BR)I**  
**FULTON COUNTY**  
**SN 029-0026**

DESIGNED BWP	THOUVENOT, WADE & MOERCHEN, INC. ENGINEERS • SURVEYORS • PLANNERS   CORPORATE OFFICE 4940 OLD COLLINGSVILLE RD. SHAWNEE, ILLINOIS 62226 TEL. (618) 624-6688 FAX (618) 624-6688 E-MAIL: COWI@TWM-INC.COM
CHECKED ALN	
DRAWN KBF	
CHECKED KPC	