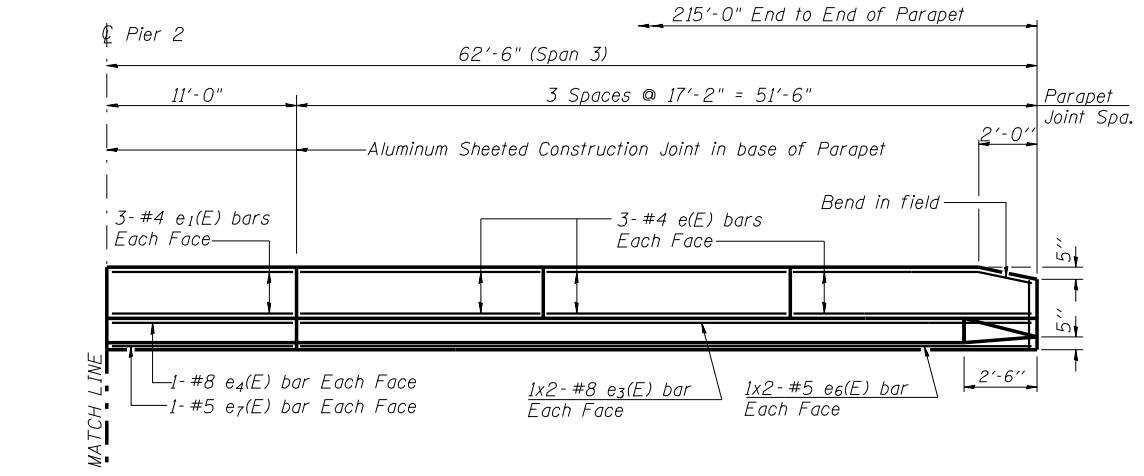
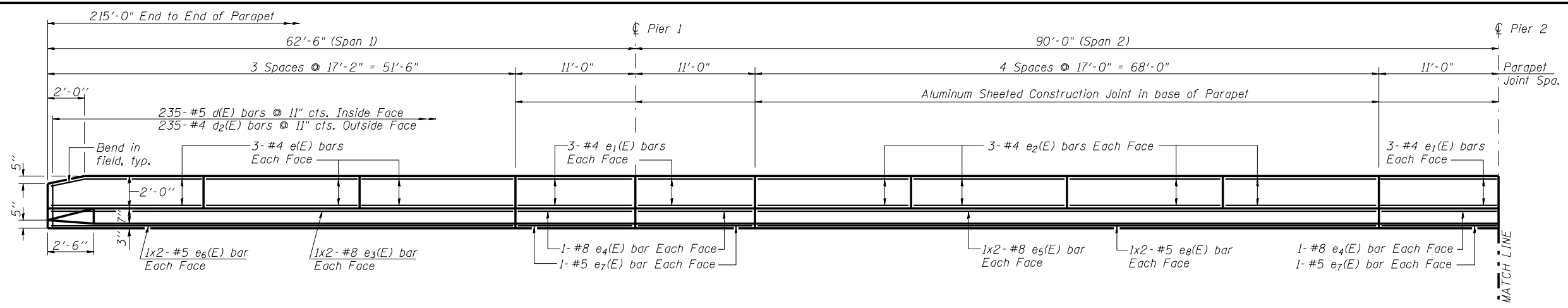


**SUPERSTRUCTURE  
BILL OF MATERIAL**

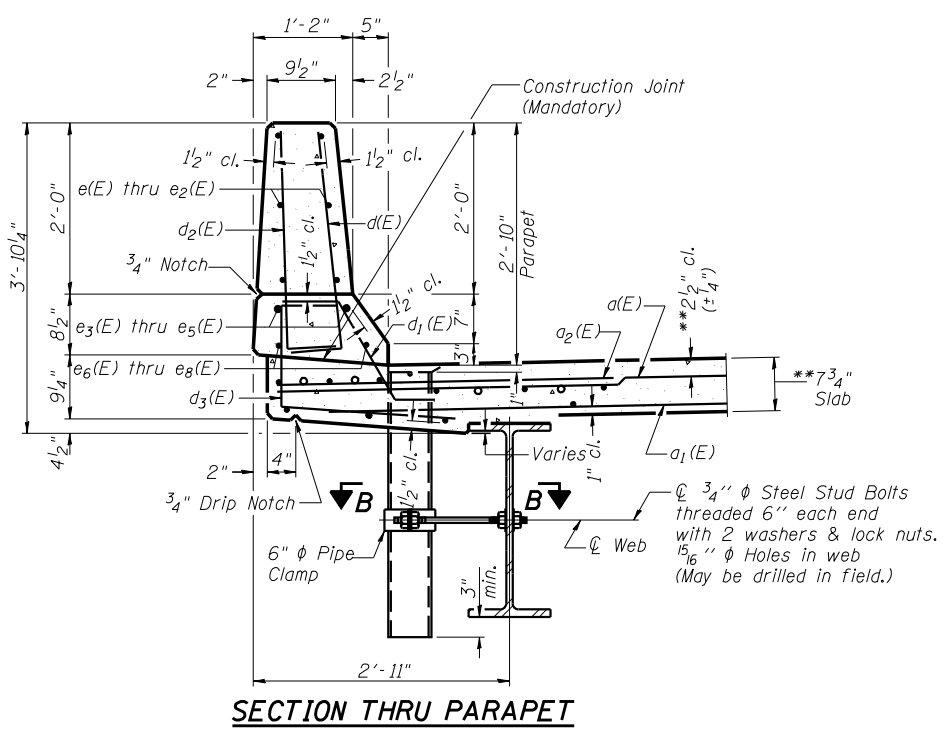
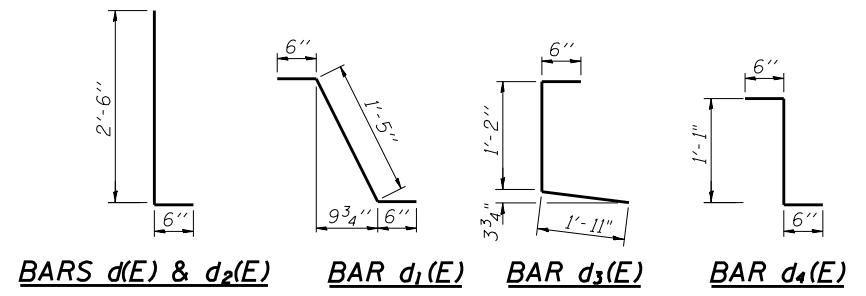
Bar	No.	Size	Length	Shape
a(E)	738	#5	19'-1"	——
a <sub>1</sub> (E)	574	#5	18'-3"	——
a <sub>2</sub> (E)	370	#6	4'-6"	——
b(E)	336	#5	28'-9"	——
b <sub>1</sub> (E)	80	#6	44'-6"	——
b <sub>2</sub> (E)	252	#5	32'-7"	——
d(E)	470	#5	3'-0"	┌
d <sub>1</sub> (E)	458	#5	2'-5"	┌
d <sub>2</sub> (E)	470	#4	3'-0"	┌
d <sub>3</sub> (E)	470	#4	3'-7"	┌
d <sub>4</sub> (E)	12	#5	2'-1"	┌
e(E)	72	#4	16'-10"	——
e <sub>1</sub> (E)	48	#4	10'-8"	——
e <sub>2</sub> (E)	48	#4	16'-8"	——
e <sub>3</sub> (E)	16	#8	27'-4"	——
e <sub>4</sub> (E)	16	#8	10'-8"	——
e <sub>5</sub> (E)	8	#8	35'-7"	——
e <sub>6</sub> (E)	16	#5	26'-5"	——
e <sub>7</sub> (E)	16	#5	10'-8"	——
e <sub>8</sub> (E)	8	#5	34'-8"	——
m(E)	8	#6	18'-6"	——
m <sub>1</sub> (E)	12	#6	19'-3"	——
m <sub>2</sub> (E)	24	#6	8'-3"	——
m <sub>3</sub> (E)	8	#6	6'-4"	——
m <sub>4</sub> (E)	4	#6	2'-7"	——
m <sub>5</sub> (E)	4	#6	3'-0"	——
s(E)	84	#5	6'-9"	┐
s <sub>1</sub> (E)	72	#4	9'-4"	┐
v(E)	76	#5	3'-10"	└
Reinforcement Bars, Epoxy Coated	Pound		62,960	
Concrete Superstructure	Cu. Yds.		286.0	
Bar Splicer	Each		76	

Reinforcement bars designated (E) shall be epoxy coated.  
Bars indicated thus 2 x 3 - #5 etc. indicates 2 lines of bars with 3 lengths per line.

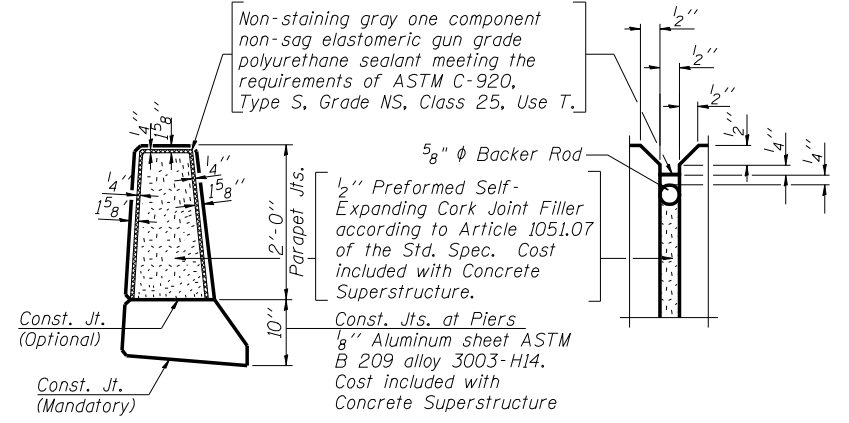
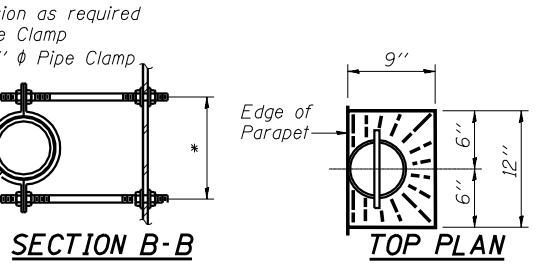
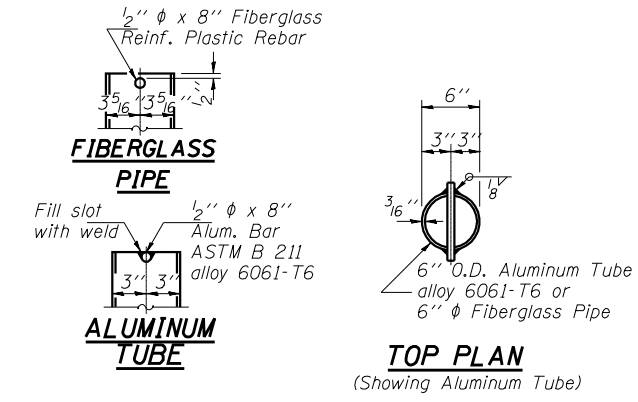


MIN. BAR LAP	
#5	1'-8"
#8	3'-5"

**INSIDE ELEVATION OF PARAPET**



\*\*Prior to grinding.



**PARAPET JOINT DETAILS**

- Notes:
1. Floor drains need not be painted.
  2. Fiberglass pipe shall conform to ASTM D2996, with short-time rupture strength hoop tensile stress of 30,000 psi minimum.

**PARAPET DETAILS**

IL. ROUTE 47  
OVER SANGAMON RIVER  
F.A.P. ROUTE 326 SEC. (129BR-3) BR  
CHAMPAIGN COUNTY  
STATION 746+65.00  
STRUCTURE NO. 010-0281

REVISIONS	NAME	DATE

DRAWN BY: SMM	DATE: 5/05
CHECKED BY: MM	
APPROVED BY: SMM	

DRAWING NUMBER: S-6