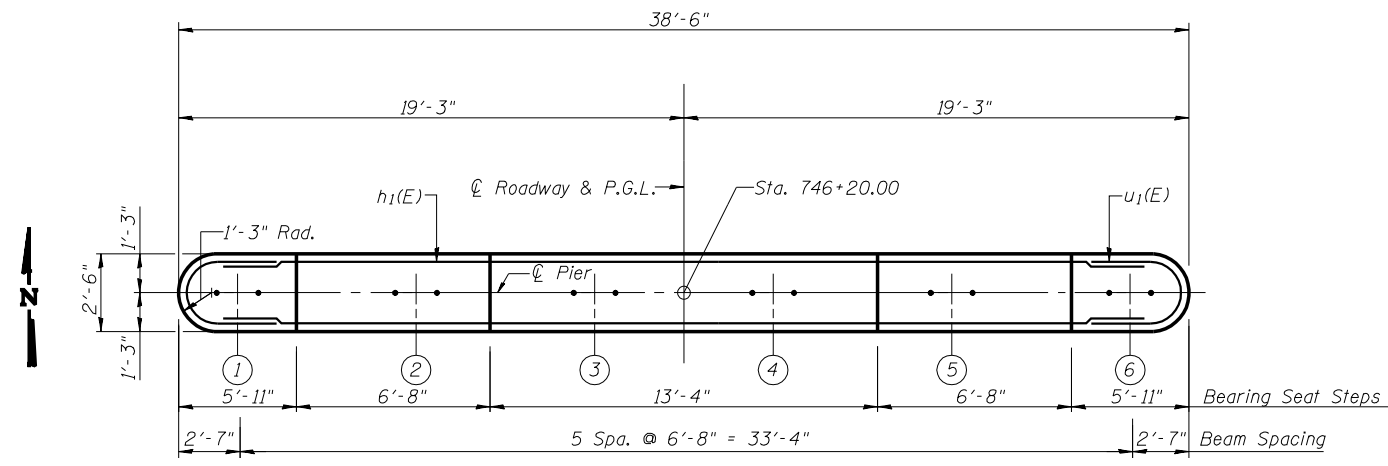


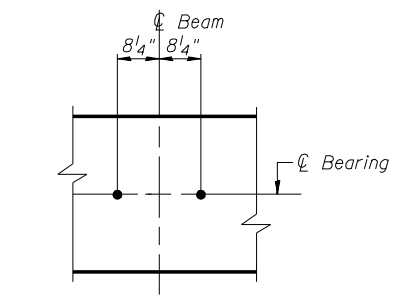
Notes: Space reinforcement in cap to miss anchor bolts.
Pour steps monolithically with cap.

PILE DATA

Type: HP10x42
Design Capacity: 50T
Req'd Brg. Capacity: 75 T
Est. Length: 38'
No. Req'd: 12 + 1 Test Pile



TOP PLAN

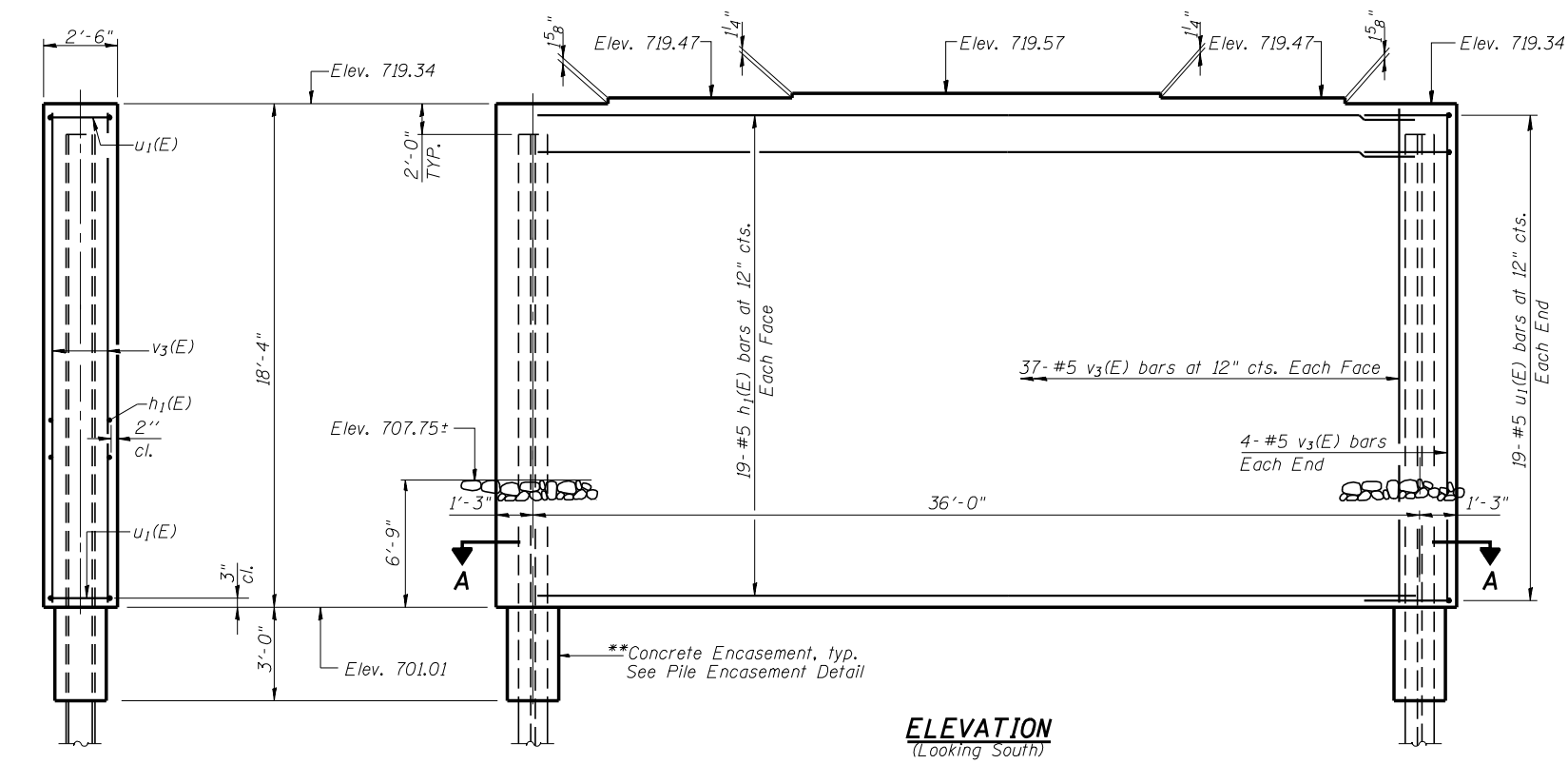


ANCHOR BOLT LAYOUT

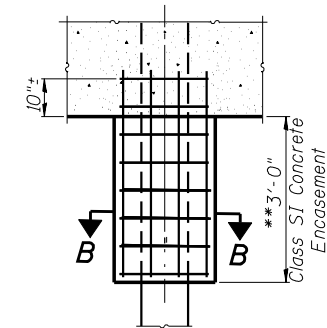
BILL OF MATERIAL

Bar	No.	Size	Length	Shape
h ₁ (E)	38	#5	36'-0"	—
u ₁ (E)	38	#5	9'-5"	U
v ₃ (E)	82	#5	17'-11"	—
Concrete Structures		Cu. Yd.	64.9	
Reinforcement Bars, Epoxy Coated		Pound	3,330	
Structure Excavation		Cu. Yd.	67	
Furnishing Steel Piles HP10x42		Foot	456	
Driving Steel Piles HP10x42		Foot	456	
Test Pile Steel HP10x42		Each	1	
Underwater Structure Excavation Protection Location 1		Each	1	
Bar Splicer		Each	38	

Reinforcement Bars designated (E) shall be epoxy coated.

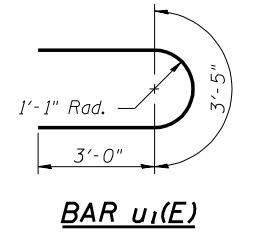


ELEVATION
(Looking South)

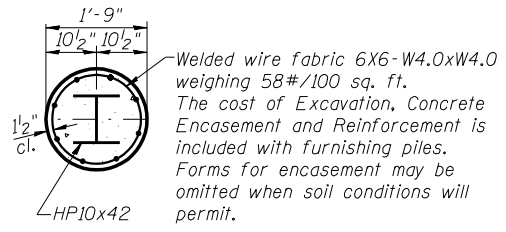


SECTION B-B

PILE ENCASEMENT DETAIL



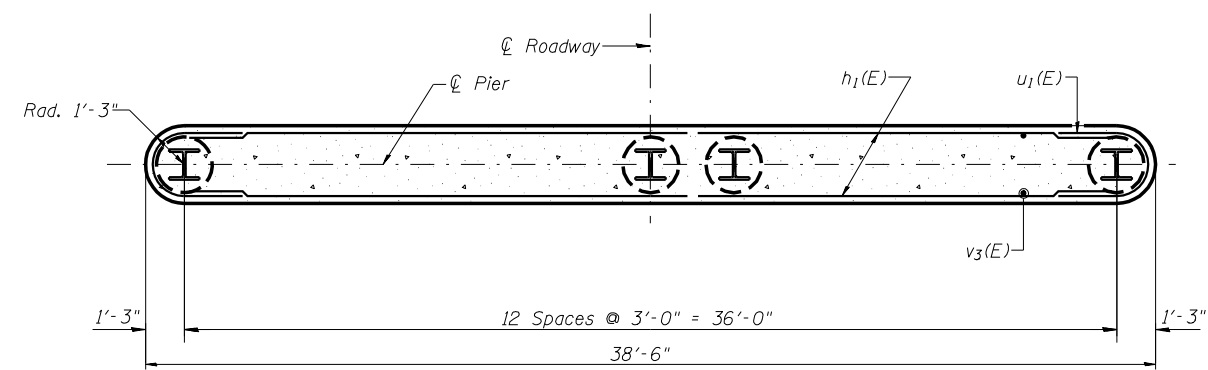
BAR u₁(E)



SECTION A-A

**Forms shall be placed below Elevation 701.00 after excavation for Pier walls. Reinforcement and Concrete Encasement shall be poured underwater into forms. The cost of Concrete Encasement, Reinforcement, form excavation, and furnishing and placing forms is included with furnishing piles. If a portion of the pier wall is under water, concrete shall be trimmed under water into forms according to Article 503.08 of the Standard Specifications. Concrete shall be trimmed to an Elevation 1'-0" above the water level at the time of Construction.

END VIEW



SECTION A-A

PIER 1
IL. ROUTE 47
OVER SANGAMON RIVER
F.A.P. ROUTE 326 SEC. (129BR-3) BR
CHAMPAIGN COUNTY
STATION 746+65.00
STRUCTURE NO. 010-0281

CHAMPAIGN, ILLINOIS
CHICAGO, ILLINOIS
EVANSVILLE, INDIANA
INDIANAPOLIS, INDIANA
KENOSHA, WISCONSIN
SPRING GREEN, WISCONSIN

REVISIONS	NAME	DATE

DESIGNED BY: SMM	PROJECT NO: 102287
DRAWN BY: MEW	DATE: 5/05
CHECKED BY: MM	
APPROVED BY: SMM	
ACTIVITY	INITIALS