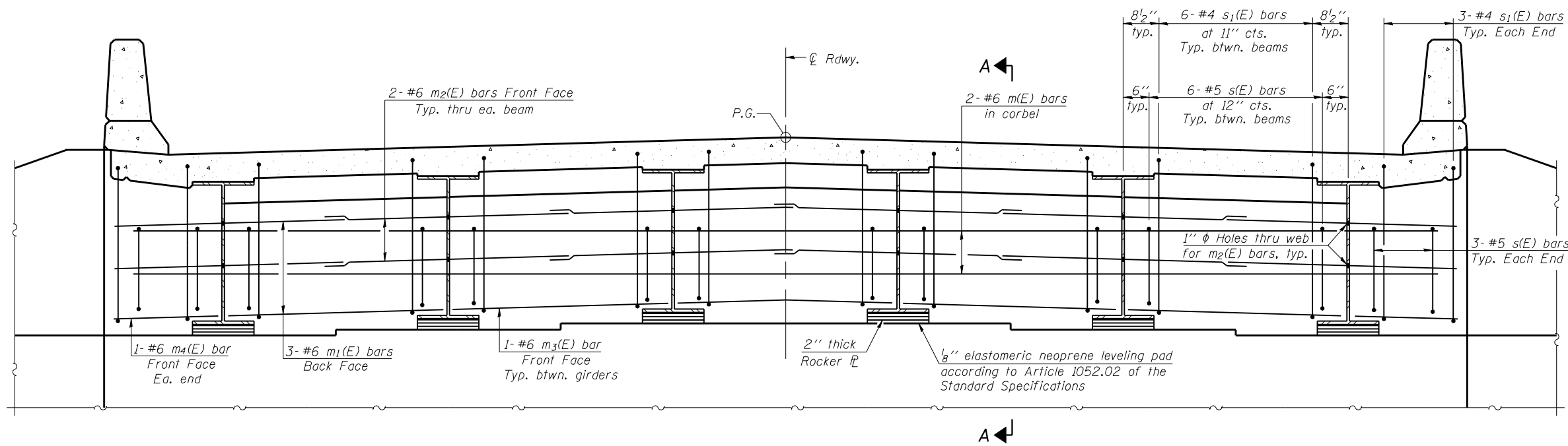


STATE OF ILLINOIS
DEPARTMENT OF TRANSPORTATION

ROUTE NO.	SECTION	COUNTY	TOTAL SHEETS	SHEET NO.	SHEET NO. 8
F.A.P. 717	(111B)BR	DEWITT	53	28	16 SHEETS
FED. ROAD DIST. NO. 7	ILLINOIS	FED. AID PROJECT			

Contract #70387



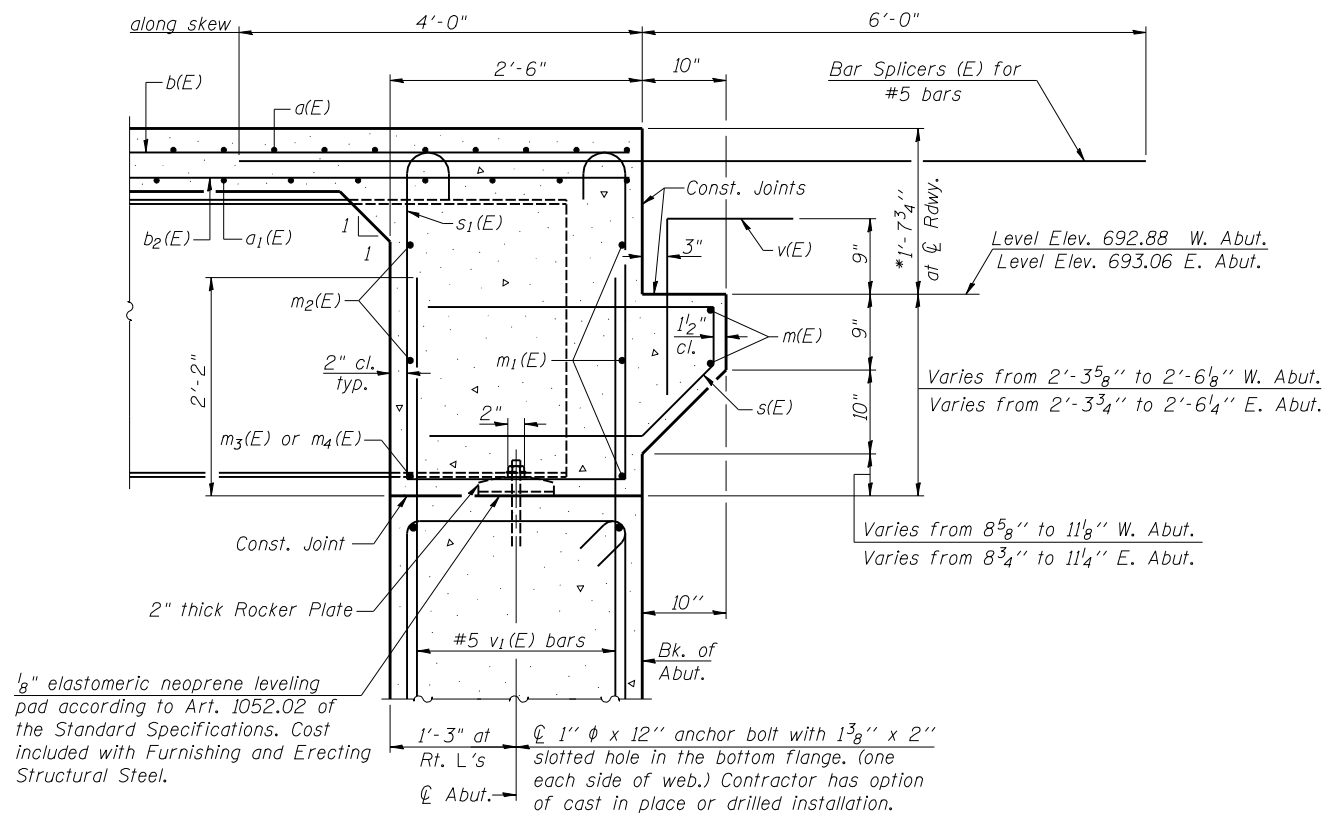
DIAPHRAGM ELEVATION AT ABUTMENT

(Looking East at East Abutment)
(West Abutment Similar)

- Notes:
- Reinforcement bars in diaphragm are billed with superstructure on sheet 7 of 16.
 - Concrete in diaphragm is included with Concrete Superstructure on sheet 7 of 16.
 - For details of bars s(E) & s1(E) see sheet 7 of 16.
 - For anchor bolt details see sheet 11 of 16.
 - The s(E) and s1(E) bars shall be placed parallel to the beams. Spacing for these bars shall be at right angles to the beams.
 - For bar splicer details, see sheet 15 of 16.

MIN. BAR LAP

#6 bar = 2'-9"



SECTION A-A

*Prior to Grinding.
Dimensions at right angles to abutment, except as shown.

DESIGNED	Stephen M. Ryan
CHECKED	Angela J. Bryant
DRAWN	R. Sommer
CHECKED	S.M.R./F.T.

September 29, 2006
EXAMINED *Thomas J. Domagalaki*
ENGINEER OF BRIDGE DESIGN
PASSED *Ralph E. Anderson*
ENGINEER OF BRIDGES AND STRUCTURES

DIAPHRAGM DETAILS
F.A.P. RT. 717 SEC. (111B)BR
DEWITT COUNTY
STATION 1069+54.00
STRUCTURE NO. 020-0063