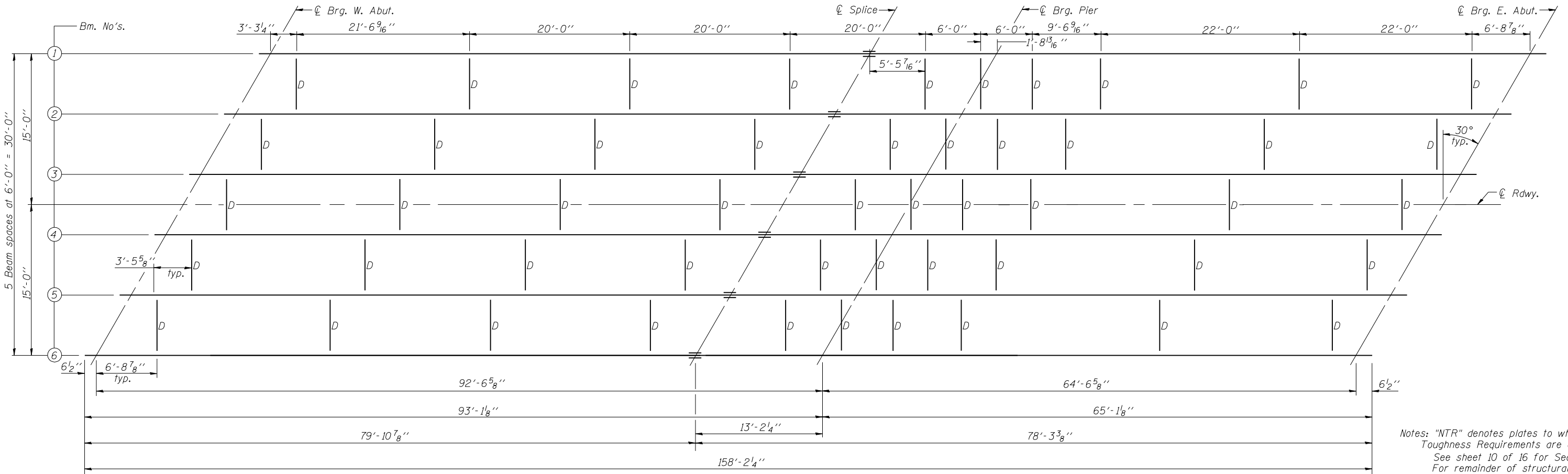


STATE OF ILLINOIS
DEPARTMENT OF TRANSPORTATION

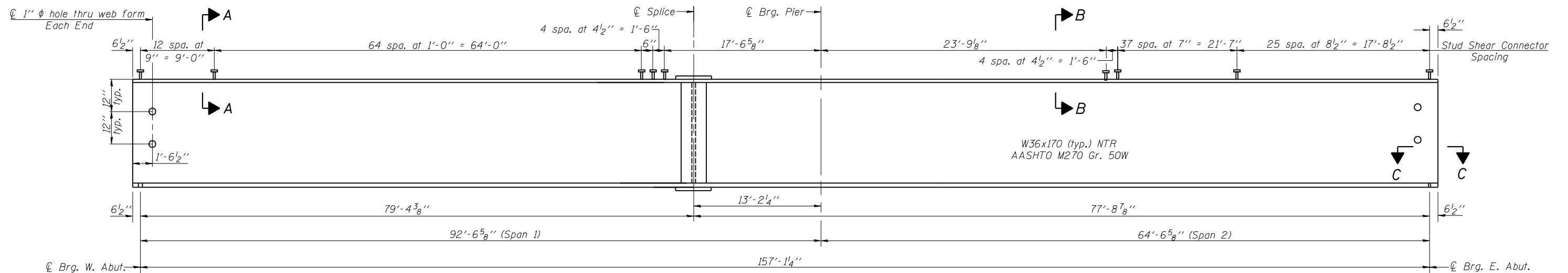
ROUTE NO.	SECTION	COUNTY	TOTAL SHEETS	SHEET NO.	SHEET NO. 9
F.A.P. 717	(111B)BR	DEWITT	53	29	16 SHEETS
FED. ROAD DIST. NO. 7	ILLINOIS	FED. AID PROJECT			

Contract #70387



FRAMING PLAN

Notes: "NTR" denotes plates to which Notch Toughness Requirements are applicable. See sheet 10 of 16 for Section C-C. For remainder of structural steel details see sheet 10 of 16.

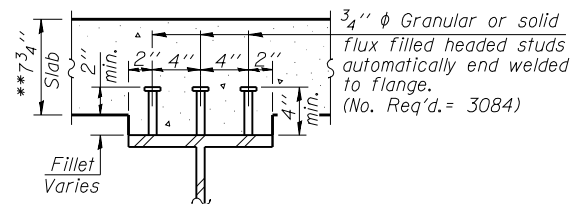


BEAM ELEVATION

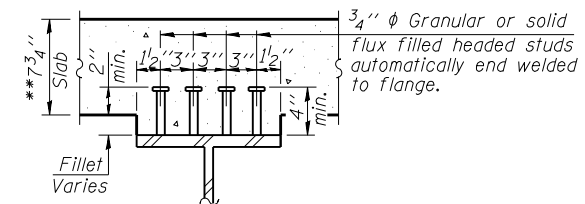
*TOP OF BEAM ELEVATIONS

Location	℄ Brg. W. Abut.	℄ Splice	℄ Brg. Pier	℄ Brg. E. Abut.
Beam 1	693.58	693.58	693.61	693.75
Beam 2	693.68	693.68	693.71	693.86
Beam 3	693.77	693.77	693.80	693.95
Beam 4	693.77	693.77	693.80	693.94
Beam 5	693.67	693.67	693.70	693.84
Beam 6	693.56	693.56	693.59	693.73

*For fabrication only.



SECTION A-A
(For all studs in Span 1)



SECTION B-B
(For all studs in Span 2)

**Prior to Grinding

DESIGNED Stephen M. Ryan
CHECKED Angela J. Bryant
DRAWN R. Sommer
CHECKED S.M.R./F.T.

September 29, 2006
EXAMINED Thomas J. Domagalaki
PASSED Ralph E. Anderson

STRUCTURAL STEEL
F.A.P. RT. 717 SEC. (111B)BR
DEWITT COUNTY
STATION 1069+54.00
STRUCTURE NO. 020-0063