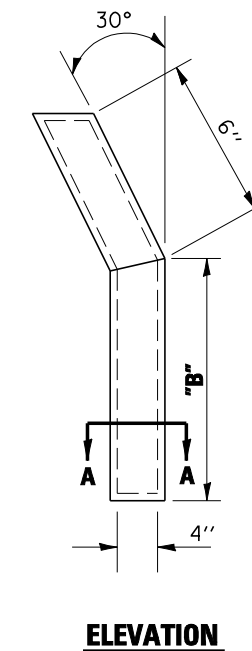
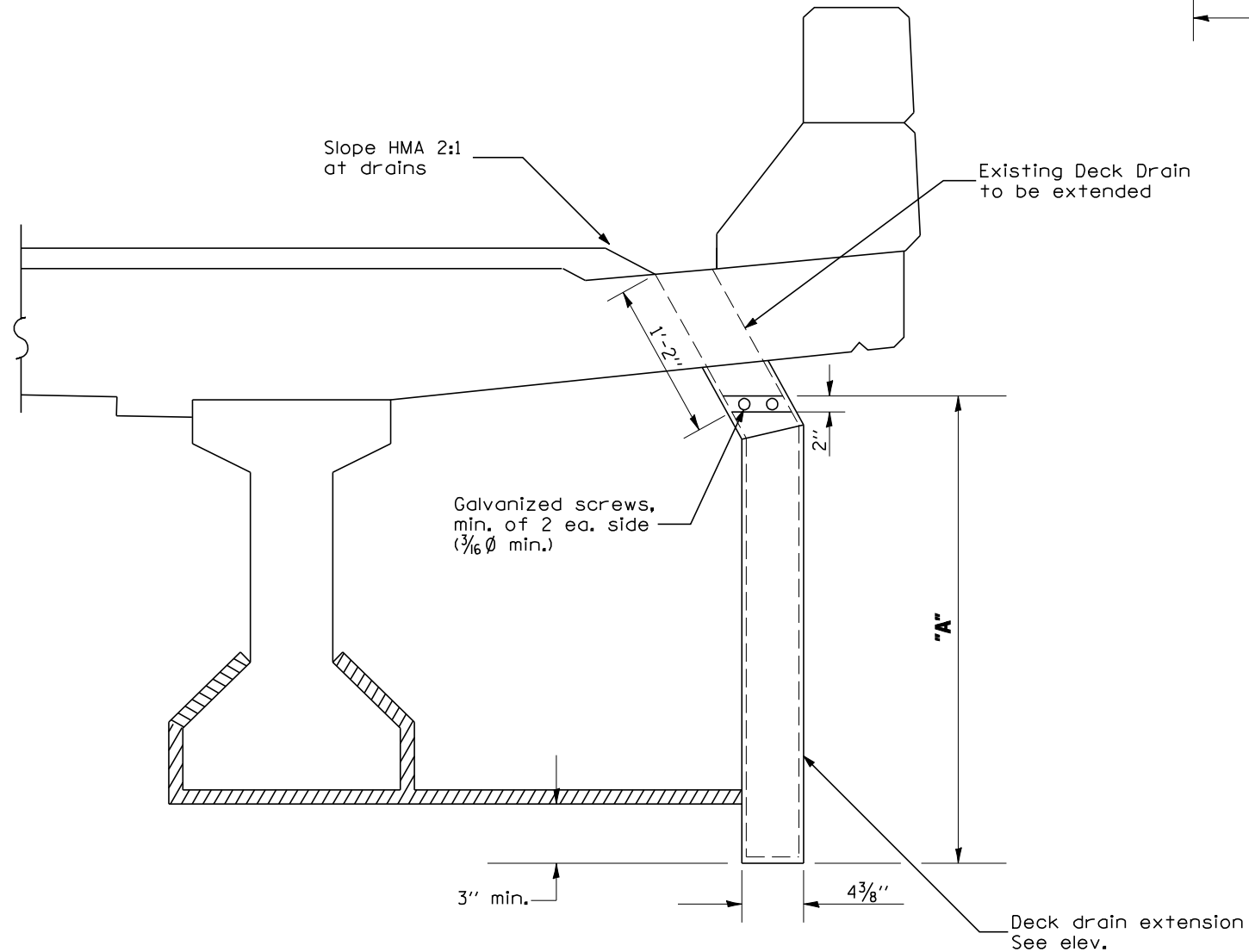
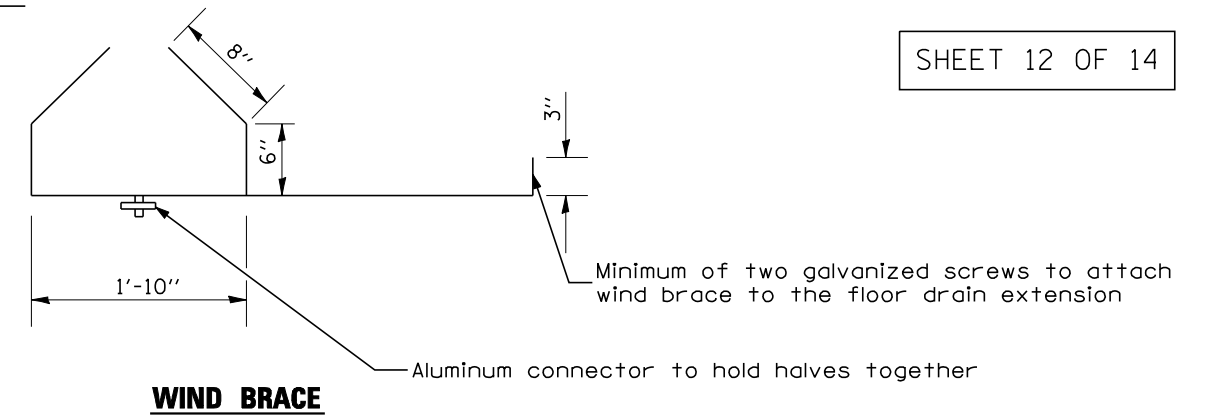


F.A.I. RTE.	SECTION	COUNTY	TOTAL SHEETS	SHEET NO.
74	*	MCLEAN	41	32

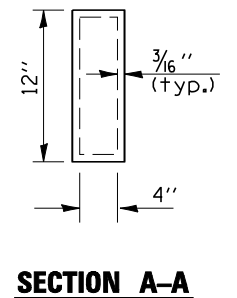
* (57-21B&57-22B)&BDR

SHEET 12 OF 14

FLOOR DRAIN EXTENSION SN 057-0129



FABRICATION:
Aluminum sheets welded
ASTM: B209 alloy 6061-T6
or aluminum extrusions
ASTM B221 alloy 60621-T6
(inside dimensions or shown)



NOTE:
SEE SHEET 6 OF 14 FOR
DRAINS TO BE EXTENDED.

WIND BRACE ($\frac{1}{2}$ " x 2" bar stock)

**SECTION AT DRAINS
TO BE EXTENDED**

DIMENSION	
"A"	3'-6"
"B"	3'-1"
TOTAL DRAINS	24.0

PLOT DATE = 8/16/2007
FILE NAME = c:\projects\5901187 (61)\70641cover.dgn
PLOT SCALE = 1/8"=1'-0" / IN.
USER NAME = collierb

ILLINOIS DEPARTMENT OF TRANSPORTATION
FLOOR DRAIN EXTENSION
F.A.I. ROUTE 74
SECTION (57-21B&57-22B)&BDR
MCLEAN COUNTY
S.N. 057-0129
SCALE: NA DRAWN BY: RC/JP
DATE: 03/26/07 CHECKED BY: