

F.A. RTE.	SECTION	COUNTY	TOTAL SHEETS	SHEET NO.
		SANGAMON	15	1

• D6 TRAFFIC SIGNAL MOD 2007-1

STATE OF ILLINOIS
DEPARTMENT OF TRANSPORTATION
DIVISION OF HIGHWAYS

PROPOSED HIGHWAY PLANS

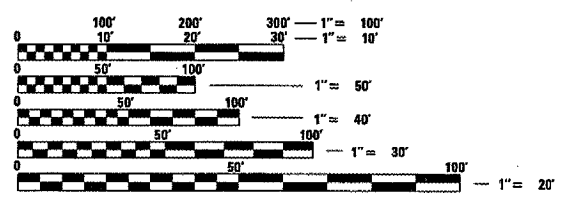
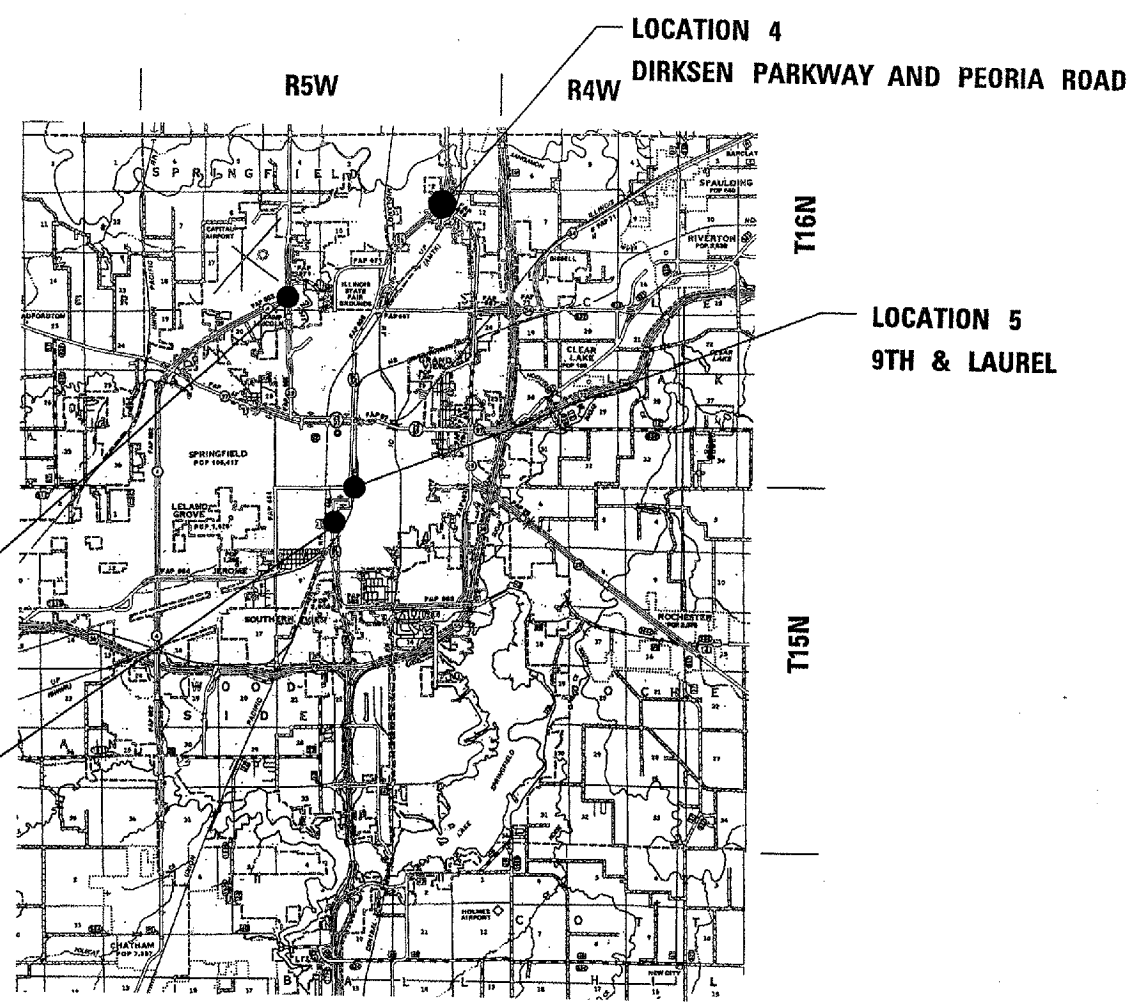
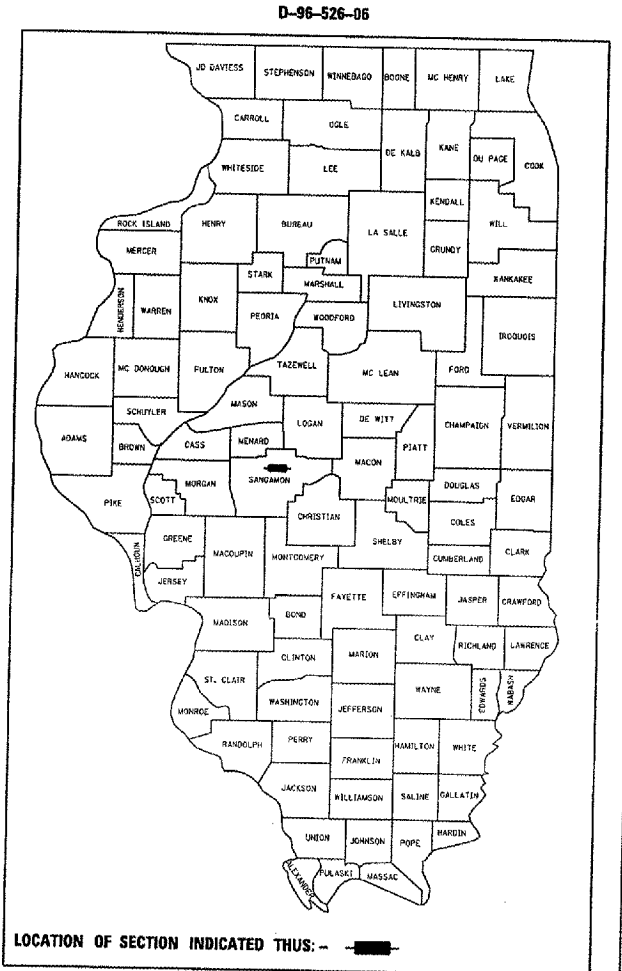
ROUTE VARIOUS
SECTION D6 TRAFFIC SIGNAL MOD 2007-1
PROJECT: HSIP-0005 (524)
SANGAMON COUNTY
C-96-511-07

INDEX OF SHEETS

- 1 COVER SHEET
- 2-3 SUMMARY OF QUANTITIES
- 4-5 PROPOSED TRAFFIC SIGNALS - 5TH ST AND ASH ST
- 6-7 PROPOSED TRAFFIC SIGNALS - 6TH ST AND ASH ST
- 8-9 PROPOSED TRAFFIC SIGNALS - IL 4 AND IL 29
- 10-11 PROPOSED TRAFFIC SIGNALS - DIRKSEN PARKWAY + PEORIA ROAD
- 12 LEGEND FOR TRAFFIC SIGNAL DETAILS
- 13 TYPICAL SECTION - 9TH AND LAUREL
- 14 PLAN VIEW - 9TH AND LAUREL
- 15 LAYOUT DETAILS - 9TH AND LAUREL

LIST OF STANDARDS

000001-04	857001
001006	873001
424001-04	877001-02
606001-02	877011-02
701101-01	878001-04
701106-01	880006
701601-04	
701606-04	
701701-04	
701801-03	
702001-06	



FULL SIZE PLANS HAVE BEEN PREPARED USING STANDARD ENGINEERING SCALES. REDUCED SIZED PLANS WILL NOT CONFORM TO STANDARD SCALES. IN MAKING MEASUREMENTS ON REDUCED PLANS, THE ABOVE SCALES MAY BE USED.

J.U.L.I.E.
JOINT UTILITY LOCATION INFORMATION FOR EXCAVATION
1-800-892-0123

STATE OF ILLINOIS
DEPARTMENT OF TRANSPORTATION
DIVISION OF HIGHWAYS

SUBMITTED August 15, 2006

Chris M. Reed
DEPUTY DIRECTOR OF HIGHWAYS, REGION ENGINEER

20 _____
ENGINEER OF DESIGN AND ENVIRONMENT

20 _____
DIRECTOR OF HIGHWAYS, CHIEF ENGINEER

PRINTED BY THE AUTHORITY
OF THE STATE OF ILLINOIS

PROJECT ENGINEER: JOHN NEGANGARD (782-6990)
SQUAD LEADER: VINCE MADONIA (785-9046)

F.A. RTE.	SECTION	COUNTY	TOTAL SHEETS	SHEET NO.
			15	2
STA.		TO STA.		
FED. ROAD DIST. NO.	ILLINOIS	FED. AID PROJECT		

URBAN

Code No.	Item	Unit	Total	Location 1	Location 2	Location 3	Location 4	Location 5
				6TH AND ASH 90% FEDERAL 5% STATE 5% CITY	5TH AND ASH 90% FEDERAL 5% STATE 5% CITY	VETERANS PKWY & WALNUT ST 90% FEDERAL 10% STATE 0% CITY	PEORIA RD & DIRKSEN PKWY 90% FEDERAL 10% STATE 0% CITY	BUS 55 & LAUREL ST 90% FEDERAL 10% STATE 0% CITY
				Y031-1F	Y031-1F	Y031-1F	Y031-1F	Y031-1F
* 42400100	PORTLAND CEMENT CONCRETE SIDEWALK, 4"	SQ FT	108.9	20.0	0.0	0.0	0.0	88.9
* 44000100	PAVEMENT REMOVAL	SQ YD	30.4	0.0	0.0	0.0	0.0	30.4
* 44000500	COMBINATION CURB AND GUTTER REMOVAL	FOOT	42.4	0.0	0.0	0.0	0.0	42.4
* 44000600	SIDEWALK REMOVAL	SQ FT	73.9	20.0	0.0	0.0	0.0	53.9
42400800	DETECTABLE WARNINGS	SQ FT	20.0		0.0	0.0	0.0	20.0
* 60605000	COMINATION CONCRETE CURB AND GUTTER, TYPE B-6. 24	FOOT	57.0	0.0	0.0	0.0	0.0	57.0
70103700	TRAFFIC CONTROL COMPLETE	L SUM	1.0	0.2	0.2	0.2	0.2	0.2
70103815	TRAFFIC CONTROL SURVEILLANCE	CAL DA.	3.0	0.0	0.0	0.0	0.0	3.0
81012500	CONDUIT IN TRENCH, 1 1/2" DIA., PVC	FOOT	45.0	0.0	0.0	0.0	45.0	0.0
81012600	CONDUIT IN TRENCH, 2" DIA., PVC	FOOT	31.0	22.0	9.0	0.0	0.0	0.0
81021550	CONDUIT, AUGERED, 2" DIA., PVC	FOOT	136.0	129.0	7.0	0.0	0.0	0.0
81500200	TRENCH AND BACKFILL FOR ELECTRICAL WORK	FOOT	76.0	22.0	9.0	0.0	45.0	0.0
02103250	LUMINAIRE, SODIUM VAPOR, HORIZONTAL MOUNT, PHOTO-CELL CONTROL, 250 WATT	EACH	1.0	1.0	0.0	0.0	0.0	0.0
85000200	MAINTENANCE OF EXISTING TRAFFIC SIGNAL INSTALLATION	EACH	4.0	1.0	1.0	1.0	1.0	0.0
85700300	FULL ACTUATED CONTROLLER AND TYPE V CABINET	EACH	1.0	0.0	0.0	1.0	0.0	0.0
87301225	ELECTRIC CABLE IN CONDUIT, SIGNAL NO. 14, 3/C	FOOT	248.0	189.5	58.5	0.0	0.0	0.0
87301245	ELECTRIC CABLE IN CONDUIT, SIGNAL NO. 14, 5/C	FOOT	923.5	437.0	247.5	0.0	239.0	0.0
87301255	ELECTRIC CABLE IN CONDUIT, SIGNAL NO. 14, 7/C	FOOT	196.5	196.5	0.0	0.0	0.0	0.0
87301275	ELECTRIC CABLE IN CONDUIT, SIGNAL NO. 14, 12/C	FOOT	65.5	0.0	65.5	0.0	0.0	0.0
87502700	TRAFFIC SIGNAL POST, ALUMINUM, 16 FT.	EACH	1.0	0.0	0.0	0.0	1.0	0.0
07702900	STEEL COMBINATION MAST ARM ASSEMBLY AND POLE, 34 FT.	EACH	1.0	1.0	0.0	0.0	0.0	0.0
07702910	STEEL COMBINATION MAST ARM ASSEMBLY AND POLE, 36 FT.	EACH	1.0	0.0	1.0	0.0	0.0	0.0
87800100	CONCRETE FOUNDATION, TYPE A	FOOT	3.0	0.0	0.0	0.0	3.0	0.0
87800400	CONCRETE FOUNDATION, TYPE E, 30" DIA.	FOOT	13.5	13.5	0.0	0.0	0.0	0.0
87800415	CONCRETE FOUNDATION, TYPE E, 36" DIA.	FOOT	11.0	0.0	11.0	0.0	0.0	0.0
87900200	DRILL EXISTING HANDHOLE	EACH	5.0	3.0	1.0	0.0	1.0	0.0

PLOT DATE = 01/11/2006
 FILE NAME = c:\pcc\ccs\10510\work\10510\10510.dgn
 PLOT SCALE = 1/8"=1'-0"
 USER NAME = bobj

REVISIONS	
NAME	DATE

ILLINOIS DEPARTMENT OF TRANSPORTATION
SUMMARY OF QUANTITIES
 VARIOUS ROUTES
 D6 TRAFFIC SIGNAL MOD 2007-1
 SANGAMON

SCALE: VERT. _____
 HORIZ. _____

DATE _____ DRAWN BY _____
 CHECKED BY _____

F.A. RTE.	SECTION	COUNTY	TOTAL SHEETS	SHEET NO.
			15	3
STA.		TO STA.		
FED. ROAD DIST. NO.	ILLINOIS	FED. AID PROJECT		

Location 1	Location 2	Location 3	Location 4	Location 5
6TH AND ASH	5TH AND ASH	VETERANS PKWY & WALNUT ST	PEORIA RD & DIRKSEN PKWY	BUS 55 & LAUREL ST
90% FEDERAL 5% STATE 5% CITY	90% FEDERAL 5% STATE 5% CITY	90% FEDERAL 10% STATE 0% CITY	90% FEDERAL 10% STATE 0% CITY	90% FEDERAL 10% STATE 0% CITY
URBAN Y031-1F	Y031-1F	Y031-1F	Y031-1F	Y031-1F

Code No.	Item	Unit	Total	Location 1	Location 2	Location 3	Location 4	Location 5
88200100	TRAFFIC SIGNAL BACKPLATE	EACH	18.0	4.0	5.0	8.0	1.0	0.0
88500100	INDUCTIVE LOOP DETECTOR	EACH	36.0	0.0	0.0	36.0	0.0	0.0
88800100	PEDESTRIAN PUSHBUTTON	EACH	4.0	2.0	2.0	0.0	0.0	0.0
89502375	REMOVE EXISTING TRAFFIC SIGNAL EQUIPMENT	EACH	3.0	1.0	1.0	1.0	0.0	0.0
89502385	REMOVE EXISTING CONCRETE FOUNDATION	EACH	2.0	1.0	1.0	0.0	0.0	0.0
X0323153	ELECTRIC CABLE IN CONDUIT, GROUND, #6 1/C (GREEN)	FOOT	3443.0	394.5	427.0	1623.0	998.5	0.0
X0301183	GEOMETRICALLY PROGRAMMED LOUVER	EACH	38.0	19.0	19.0	0.0	0.0	0.0
X8801300	SIGNAL HEAD, POLYCARBONATE, LED, 1-FACE, 3-SECTION, BRACKET MOUNTED	EACH	6.0	0.0	1.0	4.0	1.0	0.0
X8801310	SIGNAL HEAD, POLYCARBONATE, LED, 1-FACE, 3-SECTION, MAST ARM MOUNTED	EACH	4.0	2.0	2.0	0.0	0.0	0.0
X8801415	SIGNAL HEAD, POLYCARBONATE, LED, 2-FACE, 3-SECTION, BRACKET MOUNTED	EACH	2.0	1.0	1.0	0.0	0.0	0.0
X8810495	PEDESTRIAN SIGNAL HEAD, POLYCARBONATE, LED, 2-FACE, BRACKET MOUNTED	EACH	2.0	1.0	1.0	0.0	0.0	0.0
X8170245	ELECTRIC CABLE IN CONDUIT, 600V (XLP-TYPE USE) 3-1/C #12	FOOT	223.5	223.5	0.0	0.0	0.0	0.0
X0325580	EMBANKMENT, SPECIAL	L SUM	1.0	0.0	0.0	0.0	0.0	1.0
X0325469	MODIFY EXISTING TRAFFIC SIGNAL BACKPLATE	EACH	23.0	5.0	4.0	9.0	5.0	0.0
67100100	MOBILIZATION	L SUM	1.0	0.2	0.2	0.2	0.2	0.2

DISTRICT SIX	
EXAMINED <u>Aug 2</u> 20 <u>06</u> <i>[Signature]</i>	OPERATIONS ENGINEER
EXAMINED <u>Aug 2</u> 20 <u>06</u> <i>[Signature]</i>	PROGRAM IMPLEMENTATION ENGINEER
EXAMINED <u>AUGUST 8</u> 20 <u>06</u> <i>[Signature]</i>	PROGRAM DEVELOPMENT ENGINEER

REVISIONS	
NAME	DATE

ILLINOIS DEPARTMENT OF TRANSPORTATION
 SUMMARY OF QUANTITIES
 VARIOUS ROUTES
 D6 TRAFFIC SIGNAL MOD 2007-1
 SANGAMON

SCALE: VERT. _____
 DATE: _____

DRAWN BY _____
 CHECKED BY _____

PLOT DATE = 8/2/2006
 PLOT SCALE = 1/8"=1'-0"
 USER NAME = bnuj

Rev.

F.A. RTE.	SECTION	COUNTY	TOTAL SHEETS	SHEET NO.
*	*	*	15	4

STA.	TO STA.
FED. ROAD DIST. NO.	ILLINOIS FED. AID PROJECT

VARIOUS
D6 TRAFFIC SIGNAL MOD 2007-1
SANGAMON

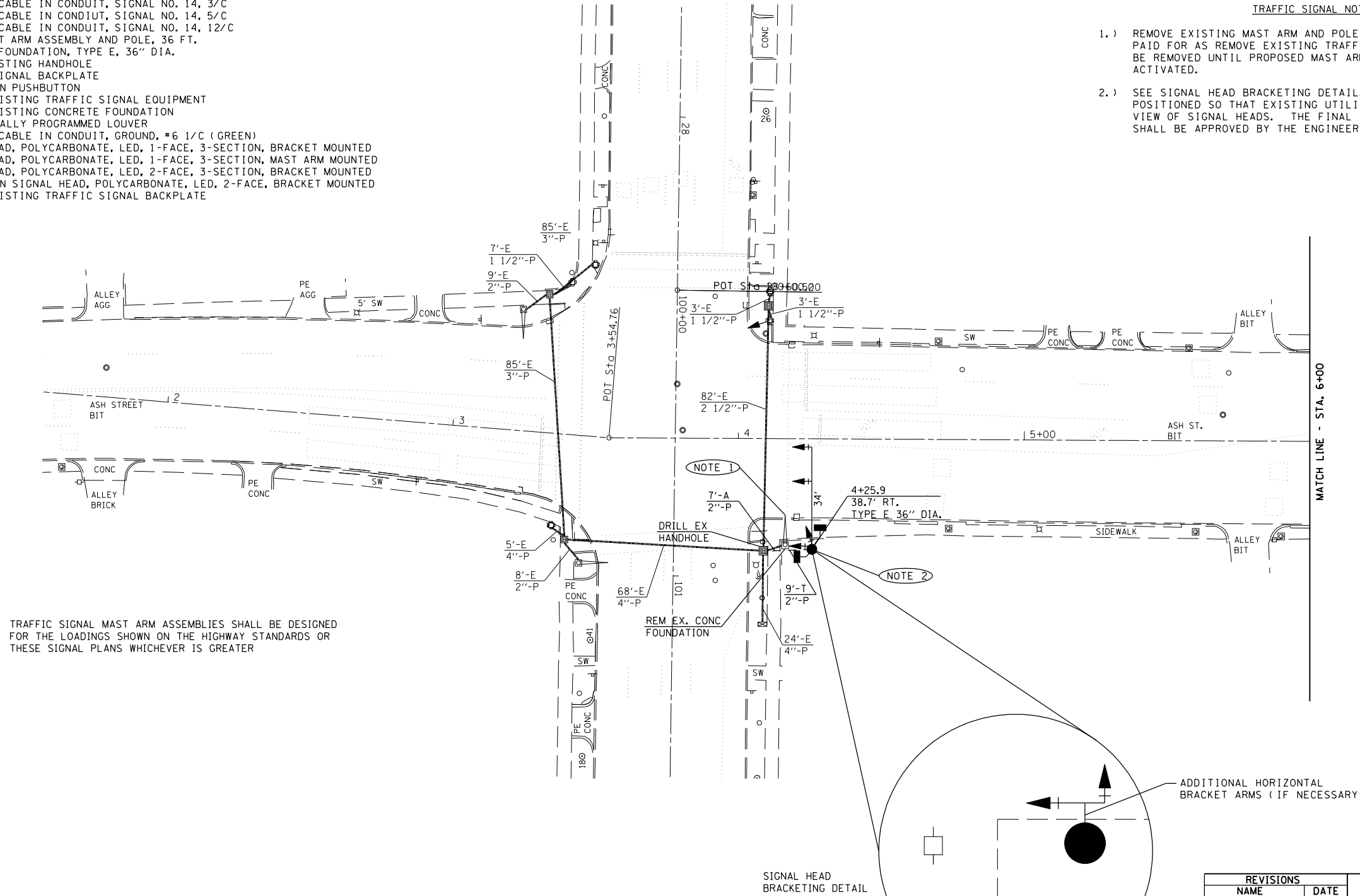
TRAFFIC SIGNAL QUANTITIES

LOCATION: 5TH & ASH

QUANTITY	UNIT	ITEM
9.0	FOOT	CONDUIT IN TRENCH, 2" DIA., PVC
7.0	FOOT	CONDUIT, AUGERED, 2" DIA., PVC
9.0	FOOT	TRENCH AND BACKFILL FOR ELECTRICAL WORK
1	EACH	MAINTENANCE OF EXISTING TRAFFIC SIGNAL INSTALLATION
58.5	FOOT	ELECTRIC CABLE IN CONDUIT, SIGNAL NO. 14, 3/C
247.5	FOOT	ELECTRIC CABLE IN CONDUIT, SIGNAL NO. 14, 5/C
65.5	FOOT	ELECTRIC CABLE IN CONDUIT, SIGNAL NO. 14, 12/C
1	EACH	STEEL MAST ARM ASSEMBLY AND POLE, 36 FT.
11.0	FOOT	CONCRETE FOUNDATION, TYPE E, 36" DIA.
1	EACH	DRILL EXISTING HANDHOLE
5	EACH	TRAFFIC SIGNAL BACKPLATE
2	EACH	PEDESTRIAN PUSHBUTTON
1	EACH	REMOVE EXISTING TRAFFIC SIGNAL EQUIPMENT
1	EACH	REMOVE EXISTING CONCRETE FOUNDATION
19	EACH	GEOMETRICALLY PROGRAMMED LOUVER
427.0	FOOT	ELECTRIC CABLE IN CONDUIT, GROUND, #6 1/C (GREEN)
1	EACH	SIGNAL HEAD, POLYCARBONATE, LED, 1-FACE, 3-SECTION, BRACKET MOUNTED
2	EACH	SIGNAL HEAD, POLYCARBONATE, LED, 1-FACE, 3-SECTION, MAST ARM MOUNTED
1	EACH	SIGNAL HEAD, POLYCARBONATE, LED, 2-FACE, 3-SECTION, BRACKET MOUNTED
1	EACH	PEDESTRIAN SIGNAL HEAD, POLYCARBONATE, LED, 2-FACE, BRACKET MOUNTED
4	EACH	MODIFY EXISTING TRAFFIC SIGNAL BACKPLATE

TRAFFIC SIGNAL NOTES:

- 1.) REMOVE EXISTING MAST ARM AND POLE AND ATTACHED SIGNAL HEADS. PAID FOR AS REMOVE EXISTING TRAFFIC SIGNAL EQUIPMENT. SHALL NOT BE REMOVED UNTIL PROPOSED MAST ARM AND SIGNAL HEADS ARE ACTIVATED.
- 2.) SEE SIGNAL HEAD BRACKETING DETAIL. SIGNAL HEADS SHALL BE POSITIONED SO THAT EXISTING UTILITY POLE DOES NOT OBSTRUCT VIEW OF SIGNAL HEADS. THE FINAL AIMING OF THE SIGNAL HEADS SHALL BE APPROVED BY THE ENGINEER



TRAFFIC SIGNAL MAST ARM ASSEMBLIES SHALL BE DESIGNED FOR THE LOADINGS SHOWN ON THE HIGHWAY STANDARDS OR THESE SIGNAL PLANS WHICHEVER IS GREATER

REVISIONS	
NAME	DATE

ILLINOIS DEPARTMENT OF TRANSPORTATION
PROPOSED TRAFFIC SIGNALS
 5TH ST. & ASH ST.
 D6 TRAFFIC SIGNAL MOD 2007-1
 SANGAMON COUNTY
 SCALE: VERT. _____
 HORIZ. _____
 DATE: JUL. '06
 DRAWN BY: KDA
 CHECKED BY: _____

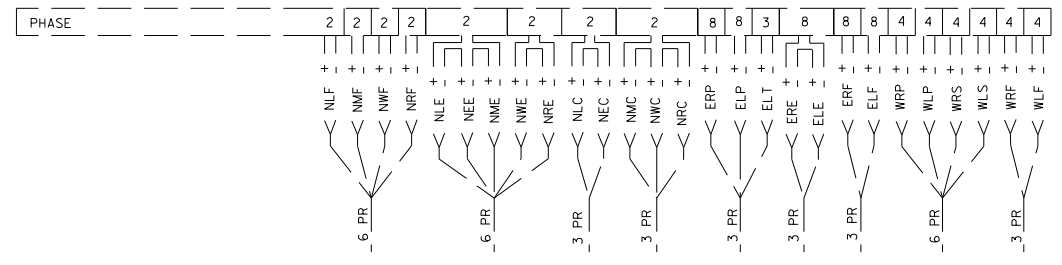
PLOT DATE = 8/22/2006
 FILE NAME = c:\p\projects\652686\155\drksen\ts_sheets.dgn
 PLOT SCALE = 42.352% / IN.
 USER NAME = laughlin-1

F.A. RTE.	SECTION	COUNTY	TOTAL SHEETS	SHEET NO.
.	.	.	15	5

STA.	TO STA.
FED. ROAD DIST. NO.	ILLINOIS FED. AID PROJECT

VARIOUS D6 TRAFFIC SIGNAL MOD 2007-1 SANGAMON

DETECTORS

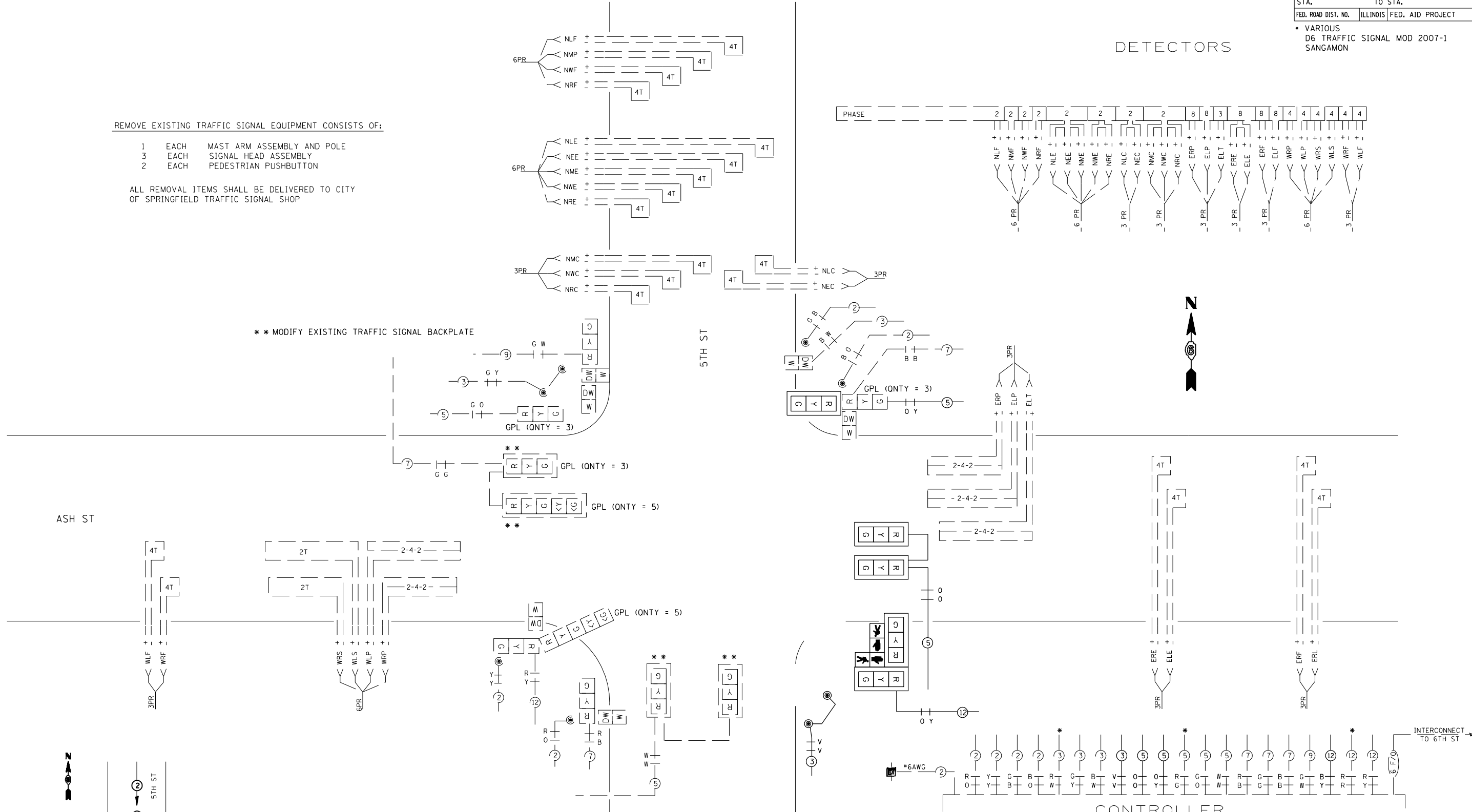


REMOVE EXISTING TRAFFIC SIGNAL EQUIPMENT CONSISTS OF:

- 1 EACH MAST ARM ASSEMBLY AND POLE
- 3 EACH SIGNAL HEAD ASSEMBLY
- 2 EACH PEDESTRIAN PUSHBUTTON

ALL REMOVAL ITEMS SHALL BE DELIVERED TO CITY OF SPRINGFIELD TRAFFIC SIGNAL SHOP

** MODIFY EXISTING TRAFFIC SIGNAL BACKPLATE



CONTROLLER

* TO BE ABANDONED AFTER ACTIVATION OF PROPOSED MAST ARM

REVISIONS	
NAME	DATE

ILLINOIS DEPARTMENT OF TRANSPORTATION
PROPOSED TRAFFIC SIGNALS

5TH ST. & ASH ST.
D6 TRAFFIC SIGNAL MOD 2007-1
SANGAMON COUNTY

SCALE: VERT. HORIZ. DATE: JUL. '06 DRAWN BY: KDA CHECKED BY:

PLOT DATE = 8/22/2006
FILE NAME = c:\p\projects\4652686\155\durksen\ts_sheets.dgn
PLOT SCALE = 42.352% / IN.
USER NAME = laughlinr1

F.A. RTE.	SECTION	COUNTY	TOTAL SHEETS	SHEET NO.
.	.	.	15	6

STA.	TO STA.
FED. ROAD DIST. NO.	ILLINOIS FED. AID PROJECT

- VARIOUS D6 TRAFFIC SIGNAL MOD 2007-1 SANGAMON

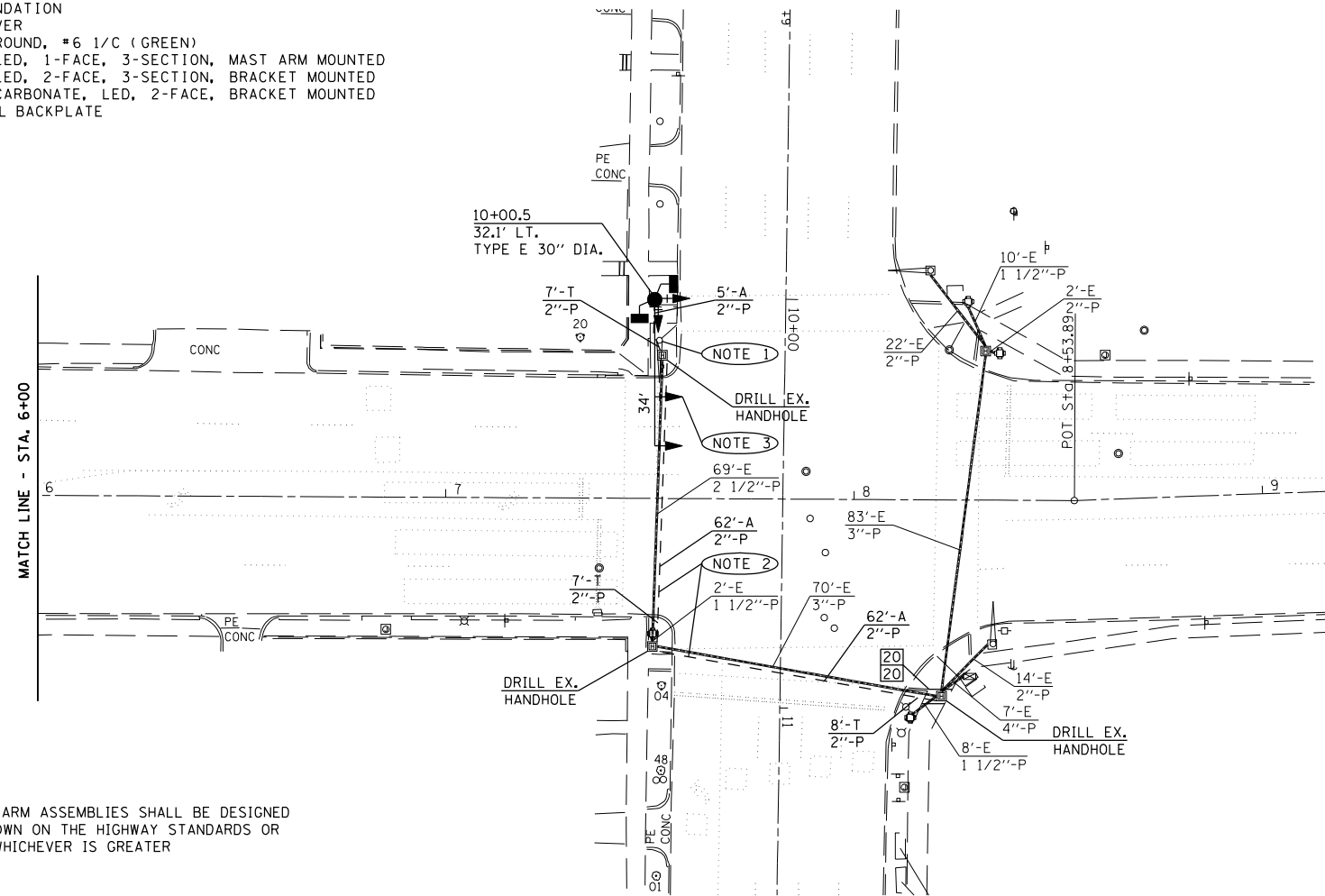
TRAFFIC SIGNAL QUANTITIES

LOCATION: 6TH & ASH

QUANTITY	UNIT	ITEM
20.0	SO FT	PORTLAND CEMENT CONCRETE SIDEWALK, 4"
20.0	SO FT	SIDEWALK REMOVAL
22.0	FOOT	CONDUIT IN TRENCH, 2" DIA., PVC
129.0	FOOT	CONDUIT, AUGERED, 2" DIA., PVC
22.0	FOOT	TRENCH AND BACKFILL FOR ELECTRICAL WORK
223.5	FOOT	ELECTRIC CABLE IN CONDUIT, 600V (XLP-TYPE USE) 3-1/C #12
1	EACH	LUMINAIRE, SODIUM VAPOR, HORIZONTAL MOUNT, PHOTO-CELL CONTROL, 250 WATT
1	EACH	MAINTENANCE OF EXISTING TRAFFIC SIGNAL INSTALLATION
189.5	FOOT	ELECTRIC CABLE IN CONDUIT, SIGNAL NO. 14, 3/C
437.0	FOOT	ELECTRIC CABLE IN CONDUIT, SIGNAL NO. 14, 5/C
196.5	FOOT	ELECTRIC CABLE IN CONDUIT, SIGNAL NO. 14, 7/C
1	EACH	STEEL COMBINATION MAST ARM ASSEMBLY AND POLE, 34 FT.
13.5	FOOT	CONCRETE FOUNDATION, TYPE E, 30" DIA.
3	EACH	DRILL EXISTING HANDHOLE
4	EACH	TRAFFIC SIGNAL BACKPLATE
2	EACH	PEDESTRIAN PUSHBUTTON
1	EACH	REMOVE EXISTING TRAFFIC SIGNAL EQUIPMENT
1	EACH	REMOVE EXISTING CONCRETE FOUNDATION
19	EACH	GEOMETRICALLY PROGRAMMED LOUVER
394.5	FOOT	ELECTRIC CABLE IN CONDUIT, GROUND, #6 1/C (GREEN)
2	EACH	SIGNAL HEAD, POLYCARBONATE, LED, 1-FACE, 3-SECTION, MAST ARM MOUNTED
1	EACH	SIGNAL HEAD, POLYCARBONATE, LED, 2-FACE, 3-SECTION, BRACKET MOUNTED
1	EACH	PEDESTRIAN SIGNAL HEAD, POLYCARBONATE, LED, 2-FACE, BRACKET MOUNTED
5	EACH	MODIFY EXISTING TRAFFIC SIGNAL BACKPLATE

TRAFFIC SIGNAL NOTES:

- REMOVE EXISTING MAST ARM AND POLE AND ATTACHED SIGNAL HEADS. PAID FOR AS REMOVE EXISTING TRAFFIC SIGNAL EQUIPMENT. SHALL NOT BE REMOVED UNTIL PROPOSED MAST ARM AND SIGNAL HEADS ARE ACTIVATED.
- INSTALL CABLES TO PROPOSED MAST ARM IN PROPOSED CONDUIT
- PROP. SIGNAL HEAD MAY BE INSTALLED PRIOR TO REMOVAL OF EXISTING MAST ARM BUT MAY NEED TO BE ALIGNED TO AVOID CONTACT WITH THE EXISTING MAST ARM. ANY NECESSARY ADJUSTMENTS SHALL BE INCLUDED IN THE COST OF THE SIGNAL HEAD



TRAFFIC SIGNAL MAST ARM ASSEMBLIES SHALL BE DESIGNED FOR THE LOADINGS SHOWN ON THE HIGHWAY STANDARDS OR THESE SIGNAL PLANS WHICHEVER IS GREATER

REVISIONS	
NAME	DATE

ILLINOIS DEPARTMENT OF TRANSPORTATION
PROPOSED TRAFFIC SIGNALS
 6TH ST. & ASH ST.
 D6 TRAFFIC SIGNAL MOD 2007-1
 SANGAMON COUNTY
 SCALE: VERT. DRAWN BY KDA
 HORIZ. CHECKED BY
 DATE JUL. '06

PLOT DATE = 8/22/2006
 FILE NAME = c:\p\projects\652686\155\drksen\ts_sheets.dgn
 PLOT SCALE = 42.3525' / IN.
 USER NAME = laughlin-1

F.A. RTE.	SECTION	COUNTY	TOTAL SHEETS	SHEET NO.
.	.	.	15	7

STA.	TO STA.
FED. ROAD DIST. NO.	ILLINOIS FED. AID PROJECT

VARIOUS D6 TRAFFIC SIGNAL MOD 2007-1 SANGAMON

REMOVE EXISTING TRAFFIC SIGNAL EQUIPMENT CONSISTS OF:

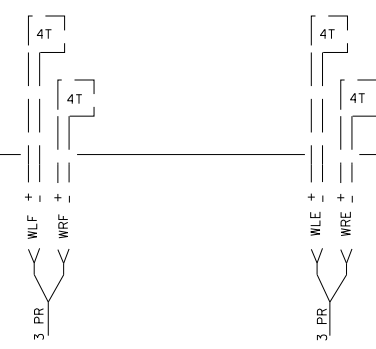
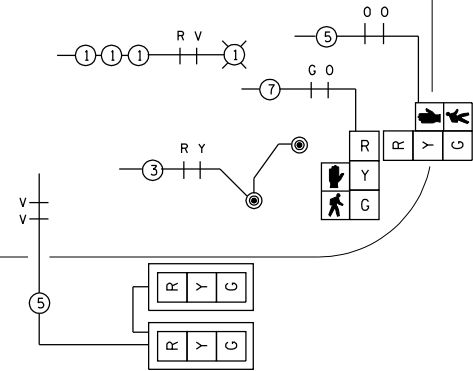
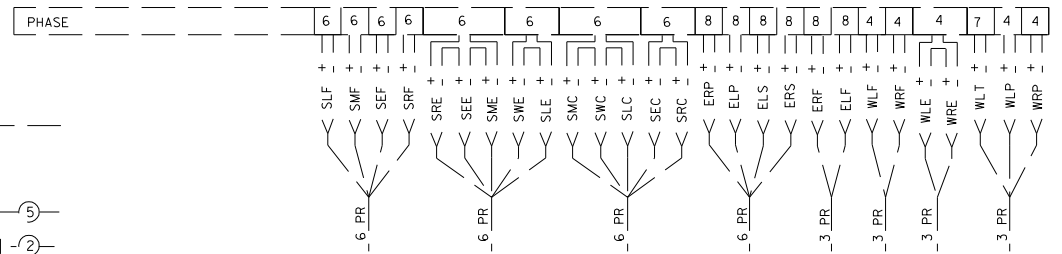
- 1 EACH MAST ARM ASSEMBLY AND POLE
- 3 EACH SIGNAL HEAD ASSEMBLY
- 2 EACH PEDESTRIAN PUSHBUTTON

ALL REMOVAL ITEMS SHALL BE DELIVERED TO CITY OF SPRINGFIELD TRAFFIC SIGNAL SHOP

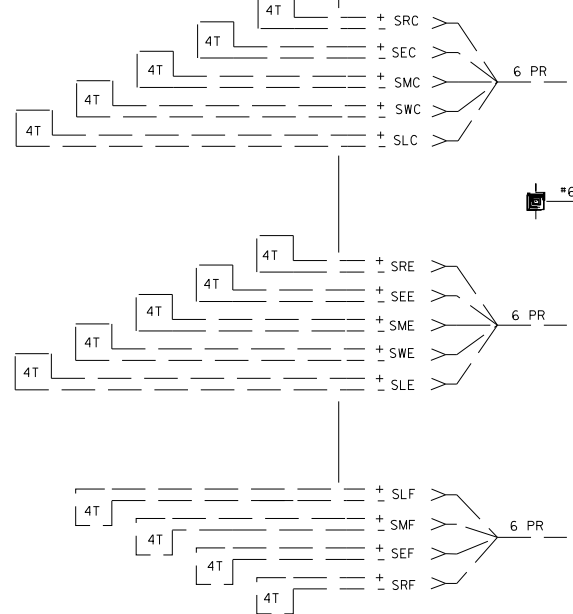
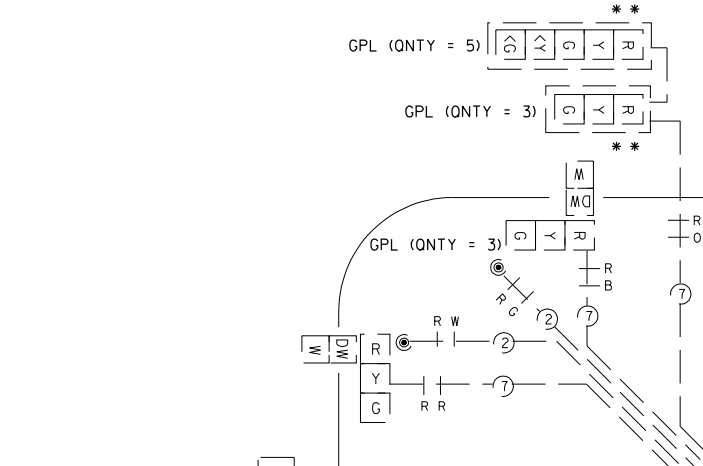
ASH ST

6TH ST

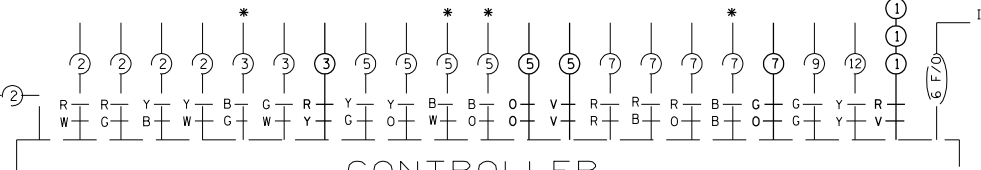
DETECTORS



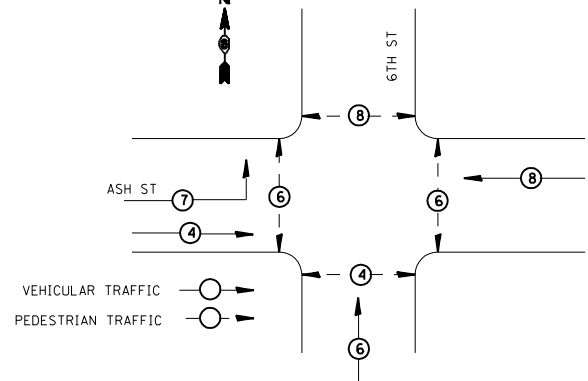
** MODIFY EXISTING TRAFFIC SIGNAL BACKPLATE



* TO BE ABANDONED AFTER ACTIVATION OF PROPOSED MAST ARM



INTERCONNECT TO 5TH ST

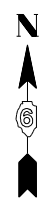


REVISIONS	
NAME	DATE

ILLINOIS DEPARTMENT OF TRANSPORTATION
PROPOSED TRAFFIC SIGNALS
 6TH ST. & ASH ST.
 D6 TRAFFIC SIGNAL MOD 2007-1
 SANGAMON COUNTY
 SCALE: VERT. DRAWN BY KDA
 HORIZ. CHECKED BY
 DATE: JUL. '06

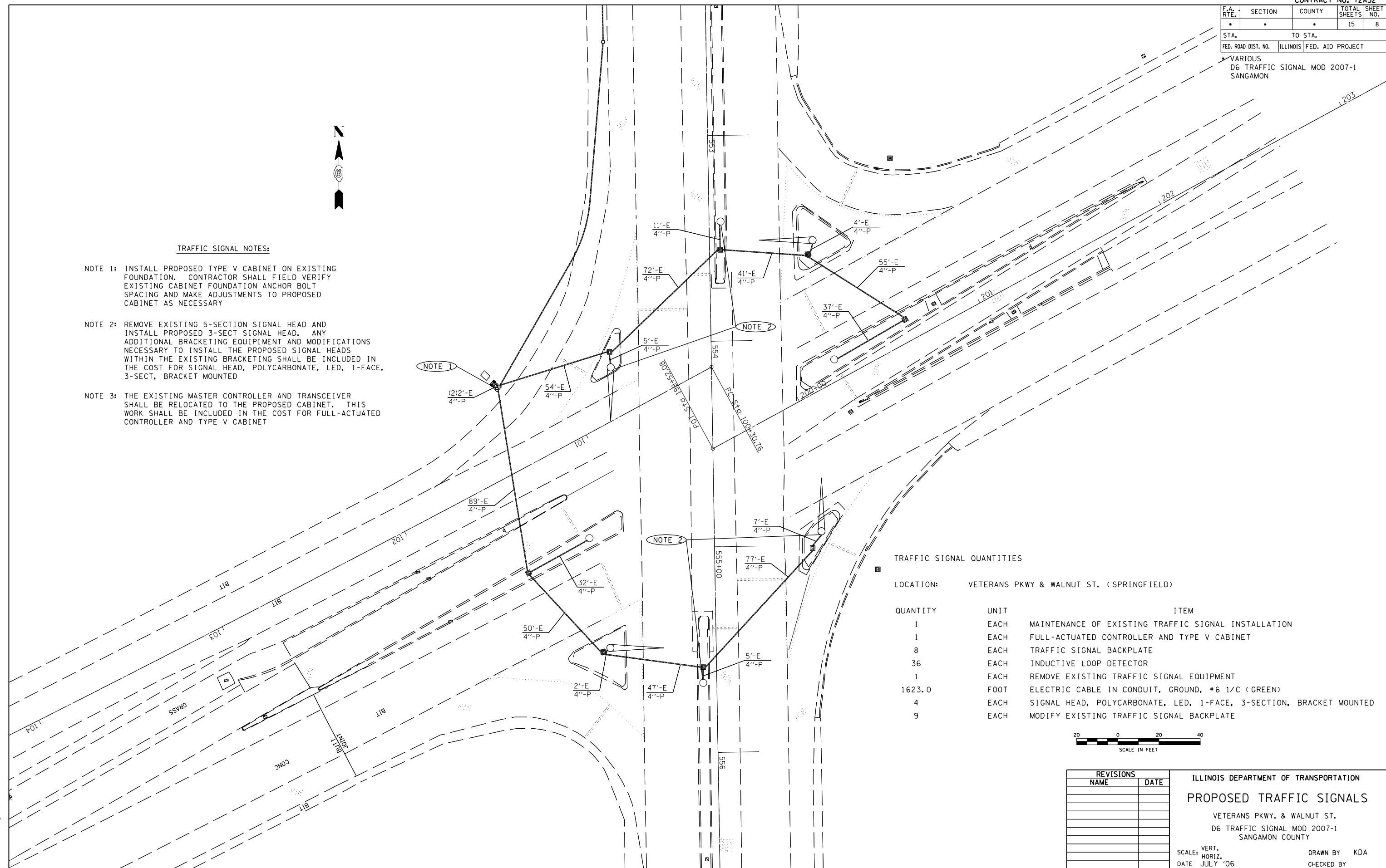
F.A. RTE.	SECTION	COUNTY	TOTAL SHEETS	SHEET NO.
.	.	.	15	8
STA.		TO STA.		
FED. ROAD DIST. NO.	ILLINOIS	FED. AID PROJECT		

VARIOUS
D6 TRAFFIC SIGNAL MOD 2007-1
SANGAMON



TRAFFIC SIGNAL NOTES:

- NOTE 1: INSTALL PROPOSED TYPE V CABINET ON EXISTING FOUNDATION. CONTRACTOR SHALL FIELD VERIFY EXISTING CABINET FOUNDATION ANCHOR BOLT SPACING AND MAKE ADJUSTMENTS TO PROPOSED CABINET AS NECESSARY
- NOTE 2: REMOVE EXISTING 5-SECTION SIGNAL HEAD AND INSTALL PROPOSED 3-SECT SIGNAL HEAD. ANY ADDITIONAL BRACKETING EQUIPMENT AND MODIFICATIONS NECESSARY TO INSTALL THE PROPOSED SIGNAL HEADS WITHIN THE EXISTING BRACKETING SHALL BE INCLUDED IN THE COST FOR SIGNAL HEAD, POLYCARBONATE, LED, 1-FACE, 3-SECT, BRACKET MOUNTED
- NOTE 3: THE EXISTING MASTER CONTROLLER AND TRANSCEIVER SHALL BE RELOCATED TO THE PROPOSED CABINET. THIS WORK SHALL BE INCLUDED IN THE COST FOR FULL-ACTUATED CONTROLLER AND TYPE V CABINET



TRAFFIC SIGNAL QUANTITIES

LOCATION: VETERANS PKWY & WALNUT ST. (SPRINGFIELD)

QUANTITY	UNIT	ITEM
1	EACH	MAINTENANCE OF EXISTING TRAFFIC SIGNAL INSTALLATION
1	EACH	FULL-ACTUATED CONTROLLER AND TYPE V CABINET
8	EACH	TRAFFIC SIGNAL BACKPLATE
36	EACH	INDUCTIVE LOOP DETECTOR
1	EACH	REMOVE EXISTING TRAFFIC SIGNAL EQUIPMENT
1623.0	FOOT	ELECTRIC CABLE IN CONDUIT, GROUND, #6 1/C (GREEN)
4	EACH	SIGNAL HEAD, POLYCARBONATE, LED, 1-FACE, 3-SECTION, BRACKET MOUNTED
9	EACH	MODIFY EXISTING TRAFFIC SIGNAL BACKPLATE



REVISIONS	
NAME	DATE

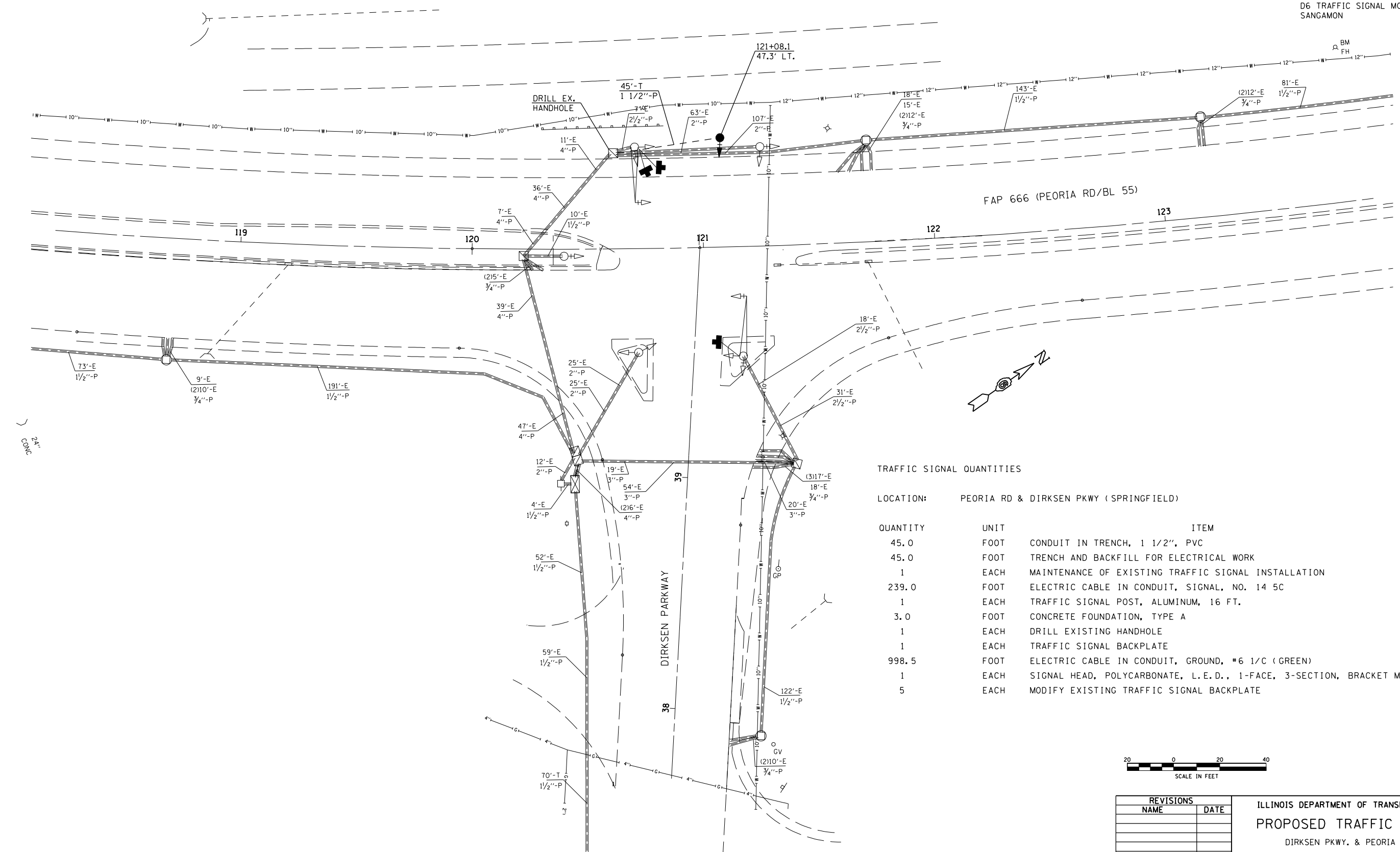
ILLINOIS DEPARTMENT OF TRANSPORTATION
PROPOSED TRAFFIC SIGNALS
VETERANS PKWY. & WALNUT ST.
D6 TRAFFIC SIGNAL MOD 2007-1
SANGAMON COUNTY
SCALE: VERT. DRAWN BY KDA
 HORIZ. CHECKED BY
DATE: JULY '06

PLOT DATE = 8/22/2006
FILE NAME = c:\p\projects\652686\155\drksen\ts_sheets.dgn
PLOT SCALE = 42.352% / IN.
USER NAME = laughlin-1

F.A. RTE.	SECTION	COUNTY	TOTAL SHEETS	SHEET NO.
.	.	.	15	10

STA.	TO STA.
FED. ROAD DIST. NO.	ILLINOIS FED. AID PROJECT

VARIOUS D6 TRAFFIC SIGNAL MOD 2007-1 SANGAMON



TRAFFIC SIGNAL QUANTITIES

LOCATION: PEORIA RD & DIRKSEN PKWY (SPRINGFIELD)

QUANTITY	UNIT	ITEM
45.0	FOOT	CONDUIT IN TRENCH, 1 1/2", PVC
45.0	FOOT	TRENCH AND BACKFILL FOR ELECTRICAL WORK
1	EACH	MAINTENANCE OF EXISTING TRAFFIC SIGNAL INSTALLATION
239.0	FOOT	ELECTRIC CABLE IN CONDUIT, SIGNAL, NO. 14 5C
1	EACH	TRAFFIC SIGNAL POST, ALUMINUM, 16 FT.
3.0	FOOT	CONCRETE FOUNDATION, TYPE A
1	EACH	DRILL EXISTING HANDHOLE
1	EACH	TRAFFIC SIGNAL BACKPLATE
998.5	FOOT	ELECTRIC CABLE IN CONDUIT, GROUND, #6 1/C (GREEN)
1	EACH	SIGNAL HEAD, POLYCARBONATE, L.E.D., 1-FACE, 3-SECTION, BRACKET MOUNTED
5	EACH	MODIFY EXISTING TRAFFIC SIGNAL BACKPLATE



REVISIONS	
NAME	DATE

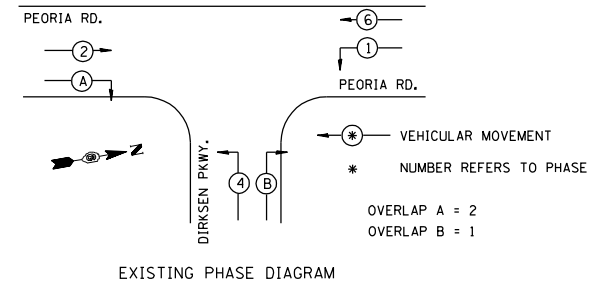
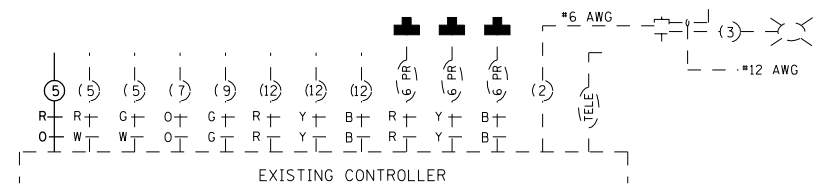
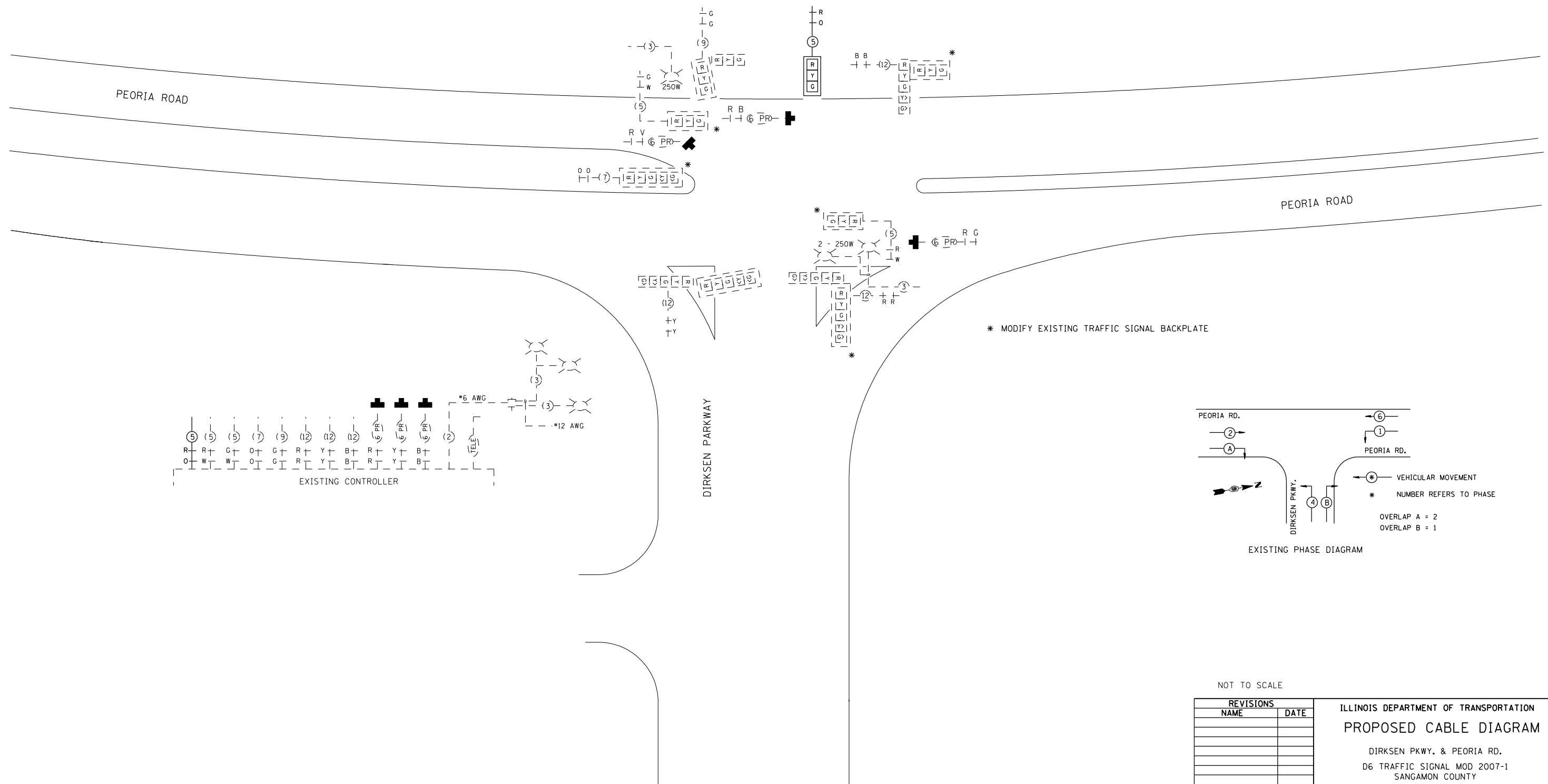
ILLINOIS DEPARTMENT OF TRANSPORTATION
PROPOSED TRAFFIC SIGNALS
 DIRKSEN PKWY. & PEORIA RD.
 D6 TRAFFIC SIGNAL MOD 2007-1
 SANGAMON COUNTY
 SCALE: VERT. DRAWN BY KDA
 HORIZ. JUN. '06
 DATE CHECKED BY

PLOT DATE = 8/22/2006
 FILE NAME = c:\p\projects\652686\155dirksen\15.sheets.dgn
 PLOT SCALE = 4.23525" / IN.
 USER NAME = laughlinr1

F.A. RTE.	SECTION	COUNTY	TOTAL SHEETS	SHEET NO.
.	.	.	15	11

STA.	TO STA.
FED. ROAD DIST. NO.	ILLINOIS FED. AID PROJECT

- VARIOUS D6 TRAFFIC SIGNAL MOD 2007-1 SANGAMON



NOT TO SCALE

REVISIONS	
NAME	DATE

ILLINOIS DEPARTMENT OF TRANSPORTATION
PROPOSED CABLE DIAGRAM
 DIRKSEN PKWY. & PEORIA RD.
 D6 TRAFFIC SIGNAL MOD 2007-1
 SANGAMON COUNTY
 SCALE: VERT. DRAWN BY KDA
 HORIZ. CHECKED BY
 DATE: JUN. '06

PLOT DATE = 8/22/2006
 FILE NAME = c:\p\projects\652606\155dirksen\15_sheets.dgn
 PLOT SCALE = 4.23524 / IN.
 USER NAME = laughlin-1

F.A. RTE.	SECTION	COUNTY	TOTAL SHEETS	SHEET NO.
*	*	*	15	12

STA.	TO STA.
FED. ROAD DIST. NO.	ILLINOIS FED. AID PROJECT

VARIOUS
D6 TRAFFIC SIGNAL MOD 2007-1
SANGAMON

TRAFFIC SIGNAL PLAN LEGEND

EXISTING	PROPOSED	DESCRIPTION
		SIGNAL HEAD
		SIGNAL HEAD WITH BACKPLATE
		TEMPORARY SIGNAL HEAD
		PEDESTRIAN SIGNAL HEAD
		PEDESTRIAN PUSHBUTTON DETECTOR
		DETECTOR LOOP
		QUADRAPOLE DETECTOR LOOP
		SIGNAL POST
		ALUMINUM MAST ARM ASSEMBLY AND POLE
		STEEL MAST ARM ASSEMBLY AND POLE
		WOOD POLE
		WOOD POLE WITH GUY
		SERVICE INSTALLATION
		CONTROLLER
		HANDHOLE
		HEAVY DUTY HANDHOLE
		DOUBLE HANDHOLE
		JUNCTION BOX
		GULFBBOX JUNCTION
		AERIAL CABLE
		CONDUIT
		CONDUIT SPLICE
		SPAN WIRE / TETHER WIRE
		SIDEWALK REMOVAL IN SO M (SO FT)
		PC CONC SDWLK 100 mm IN SO M (SO YD)
		PC CONC SDWLK 100 mm SPECIAL IN SO M (SO YD)

TRAFFIC SIGNAL WIRING DIAGRAM LEGEND

EXISTING	PROPOSED	DESCRIPTION
		200 mm (8") SIGNAL SECTION
		300 mm (12") SIGNAL SECTION
		DIRECTIONAL SIGNAL SECTION
		225 mm (9") PEDESTRIAN SIGNAL FACE
		300 mm (12") PEDESTRIAN SIGNAL FACE
		SIGNAL FACE WITH BACKPLATE
		PROGRAMMED SIGNAL SECTION
		SIGNAL SECTION WITH LOUVRE
		DUAL-INDICATION SIGNAL SECTION
		INDUCTION DETECTOR LOOP
		QUADRAPOLE DETECTOR LOOP
		DIRECT-CONNECTED LOOP LEAD-IN (TWISTED)
		ELECTRIC CABLE DENOTING NUMBER OF CONDUCTORS
		ELECTRIC CABLE TO BE REMOVED
		ELECTRIC CABLE IDENTIFIER TAPE CODES (R= RED W= WHITE Y= YELLOW G= GREEN B= BLUE O= ORANGE)
		PEDESTRIAN PUSHBUTTON DETECTOR
		VIDEO DETECTION CAMERA
		EMERGENCY VEHICLE PREEMPTOR



REVISIONS	
NAME	DATE

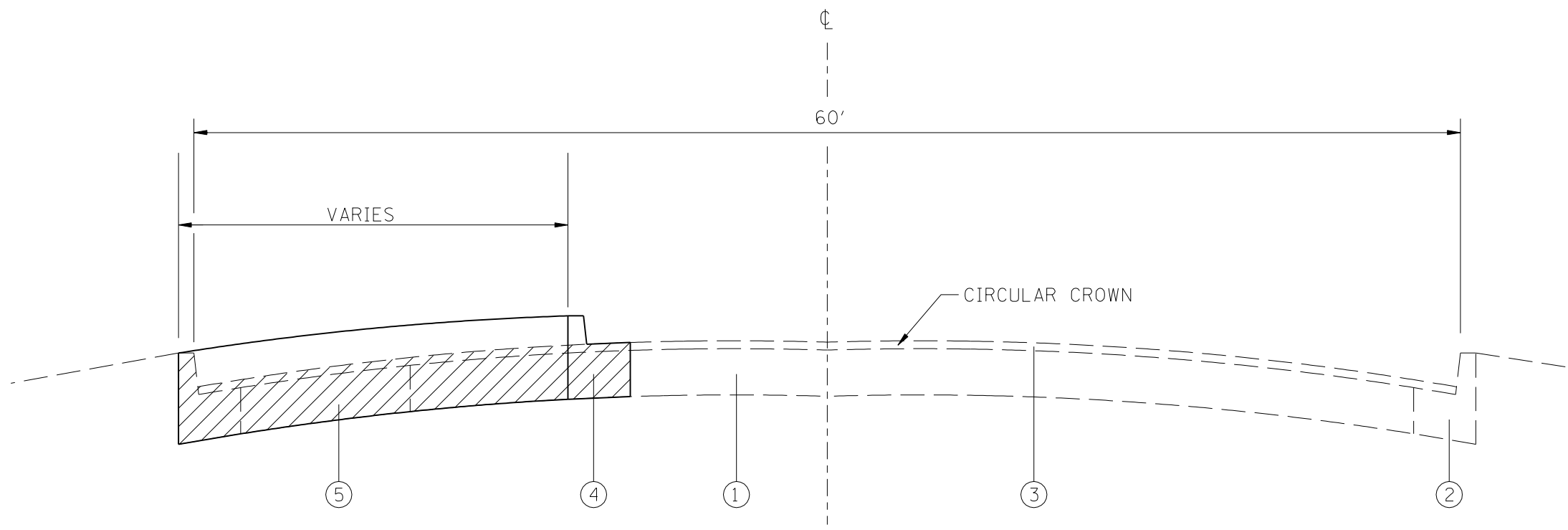
ILLINOIS DEPARTMENT OF TRANSPORTATION
LEGEND FOR TRAFFIC SIGNAL DETAILS
 VARIOUS ROUTES
 SECTION D-6 TRAFFIC SIGNAL MOD 2007-1
 SANGAMON COUNTY

SCALE: VERT. _____
 HORIZ. _____
 DATE: DECEMBER 3, 1999

DRAWN BY _____
 CHECKED BY WCD

PLOT DATE = 8/22/2006
 FILE NAME = c:\p\projects\652686\155\drksen\ts_sheets.dgn
 PLOT SCALE = 42,352% / IN.
 USER NAME = laughlin-1

F.A. RTE.	SECTION	COUNTY	TOTAL SHEETS	SHEET NO.
			15	13
STA.		TO STA.		
FED. ROAD DIST. NO.	ILLINOIS	FED. AID PROJECT		



- ① EXISTING PCC PAVEMENT
- ② EXISTING B 6.18 CURB AND GUTTER
- ③ EXISTING BITUMINOUS RESURFACING-2 1/4"
- ④ PROPOSED B6.24 CURB AND GUTTER
- ⑤ EMBANKMENT (SPECIAL)

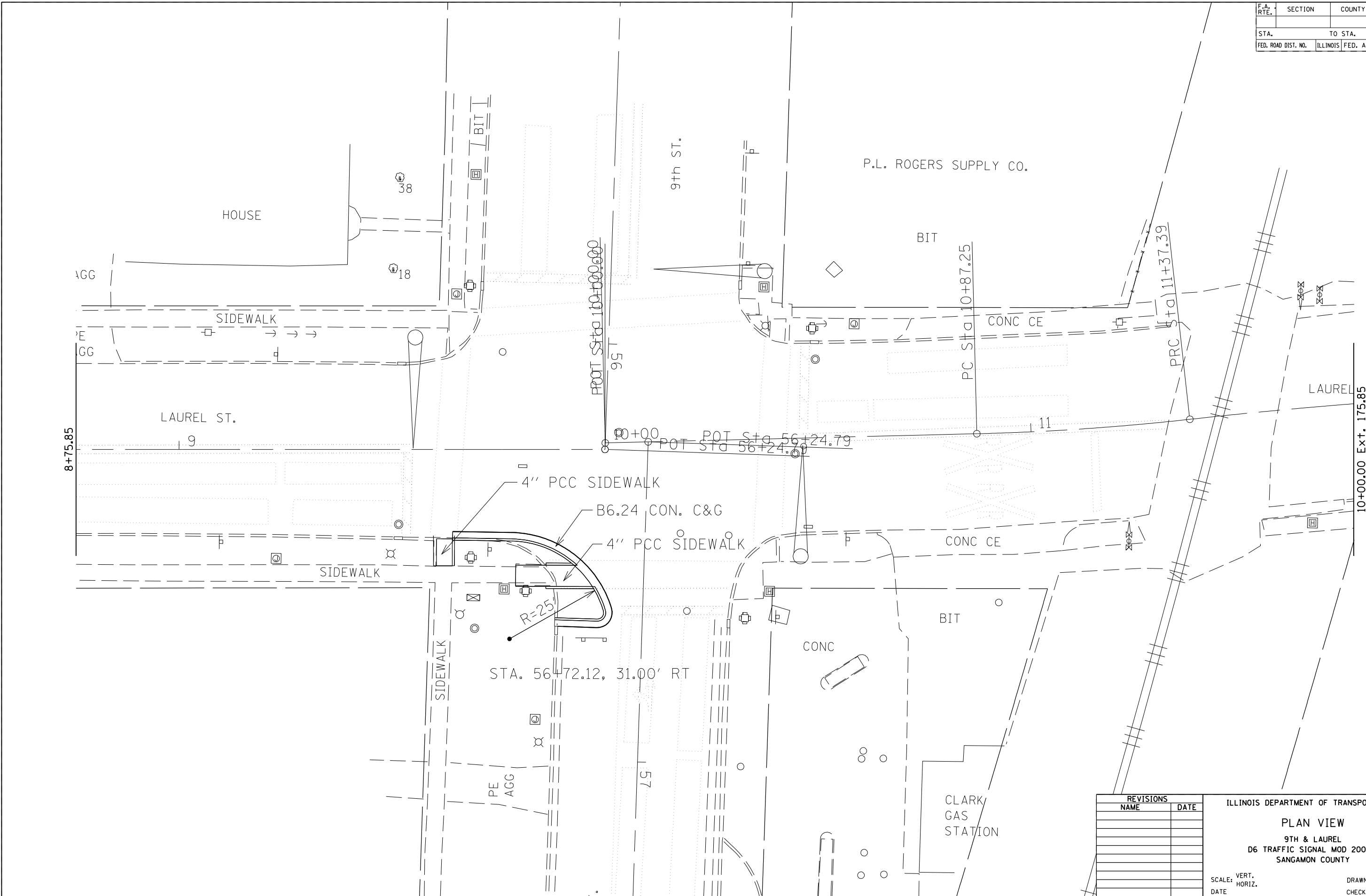
9TH STREET (BL I55)
 STA. 56+68.78 TO STA. 56+47.37

PLOT DATE : 8/22/2006
 FILE NAME : c:\p\projects\652606\bl051\laurel\shutupical.dgn
 PLOT SCALE : 1/8"=1'-0" / IN.
 USER NAME : laughlin-1

REVISIONS	
NAME	DATE

ILLINOIS DEPARTMENT OF TRANSPORTATION
 TYPICAL CROSS SECTION
 9th & LAUREL
 D6 TRAFFIC SIGNAL MOD 2007-1
 SANGAMON
 SCALE: VERT. DATE
 HORIZ. DRAWN BY
 CHECKED BY

CONTRACT NO.				
F.A. RTE.	SECTION	COUNTY	TOTAL SHEETS	SHEET NO.
			15	14
STA.		TO STA.		
FED. ROAD DIST. NO.	ILLINOIS	FED. AID PROJECT		



PLOT DATE = 8/22/2006
 FILE NAME = c:\p\projects\4652686\4652686\laurel\shplan2.dgn
 PLOT SCALE = 2:1, 7/8\"/>

REVISIONS	
NAME	DATE

ILLINOIS DEPARTMENT OF TRANSPORTATION

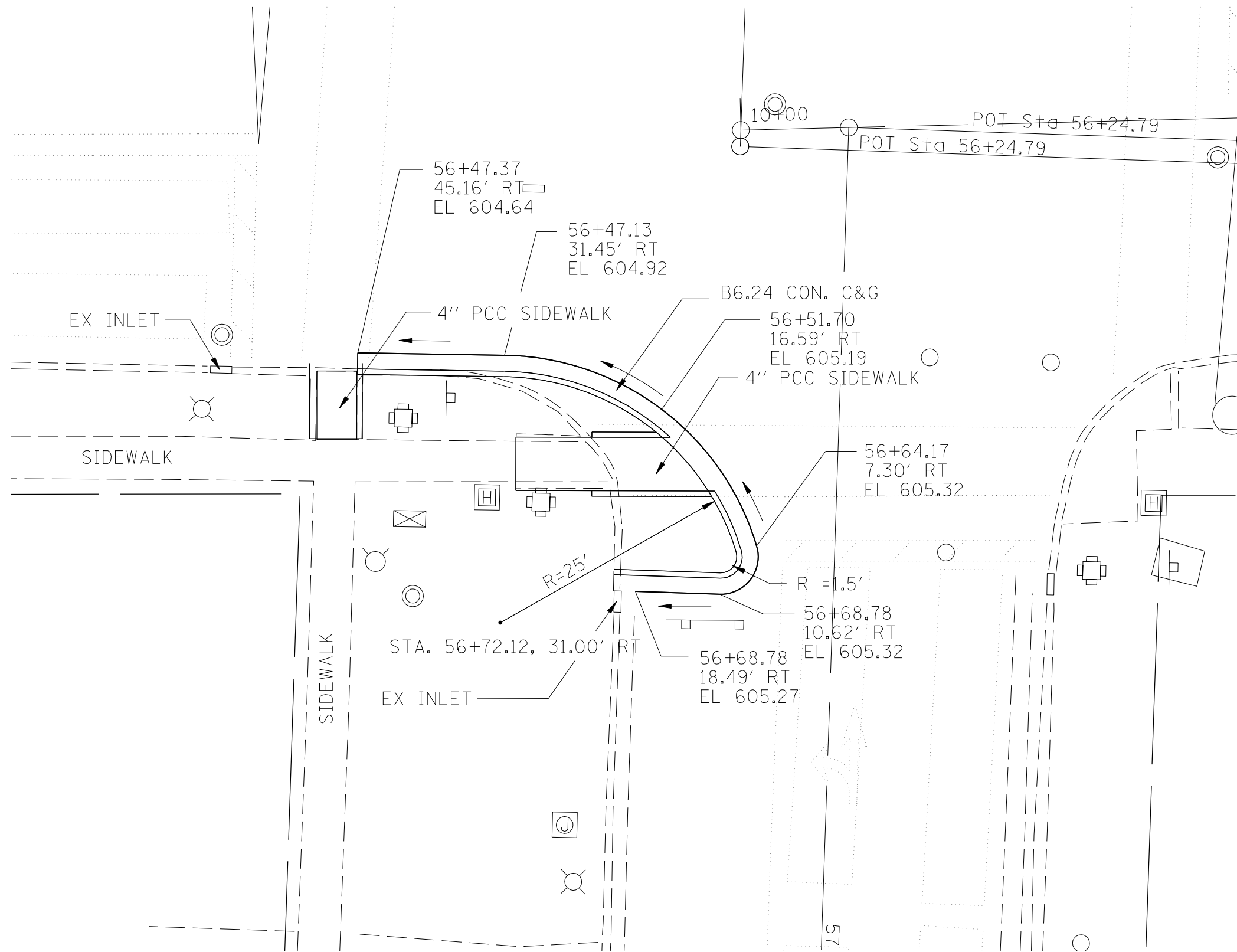
PLAN VIEW

9TH & LAUREL
D6 TRAFFIC SIGNAL MOD 2007-1
SANGAMON COUNTY

SCALE: VERT. _____
HORIZ. _____

DATE _____ DRAWN BY _____
CHECKED BY _____

F.A. RTE.	SECTION	COUNTY	TOTAL SHEETS	SHEET NO.
			15	15
STA.		TO STA.		
FED. ROAD DIST. NO.	ILLINOIS	FED. AID PROJECT		



- ELEVATIONS SHOWN ARE FROM INTERPOLATED SURVEY DATA - CONTRACTOR TO VERIFY CURB AND GUTTER FLOWS TOWARDS THE EXISTING INLETS PRIOR TO CONSTRUCTION.

PLOT DATE : 8/22/2006
 FILE NAME : c:\p\projects\652686\651\laurel\shplan2.dgn
 PLOT SCALE : 1/8"=1'-0"
 USER NAME : laughlin-1

REVISIONS	
NAME	DATE

ILLINOIS DEPARTMENT OF TRANSPORTATION
LAYOUT DETAILS
 9TH & LAUREL
 D6 TRAFFIC SIGNAL MOD 2007-1
 SANGAMON
 SCALE: VERT. DRAWN BY
 HORIZ. CHECKED BY
 DATE