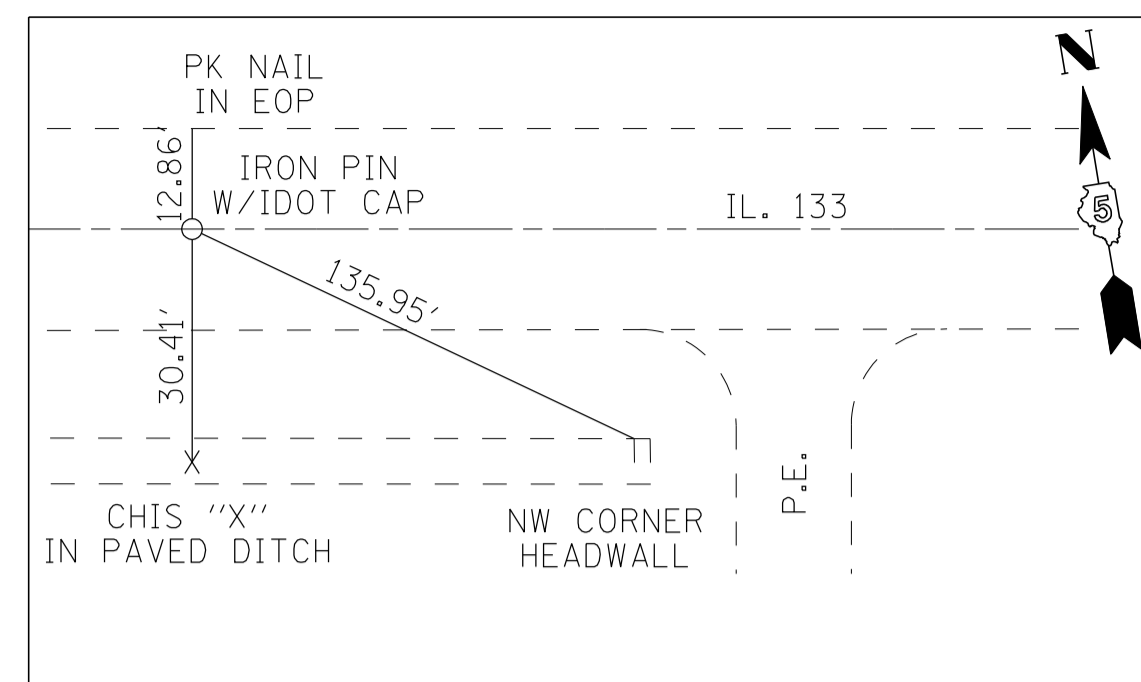
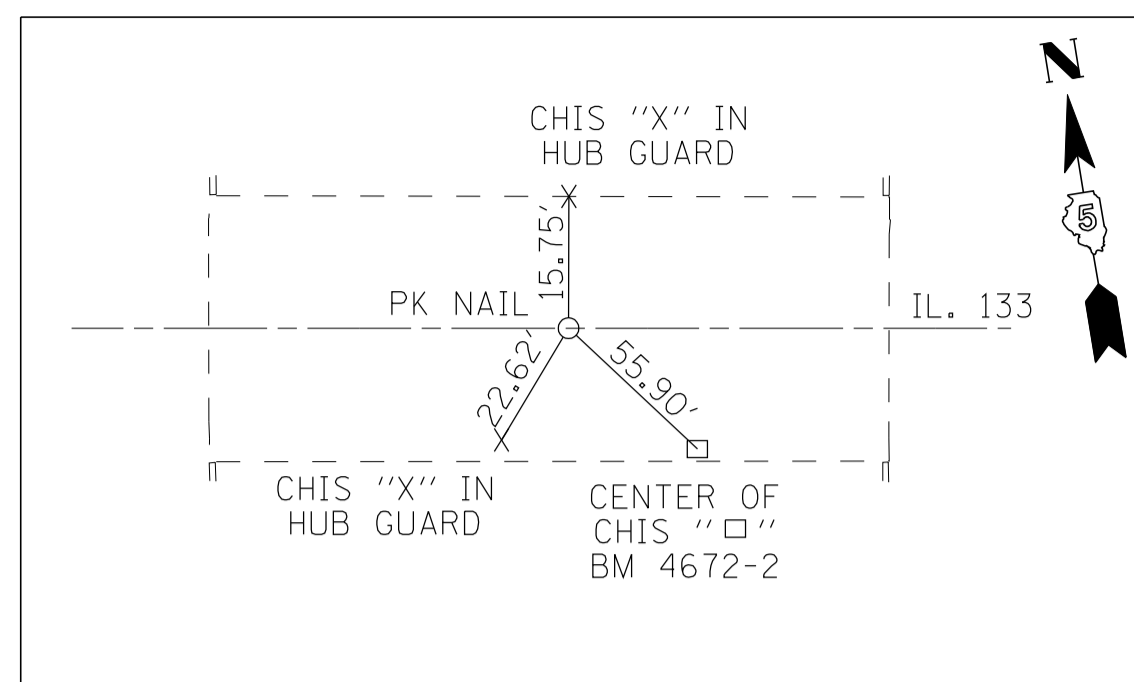


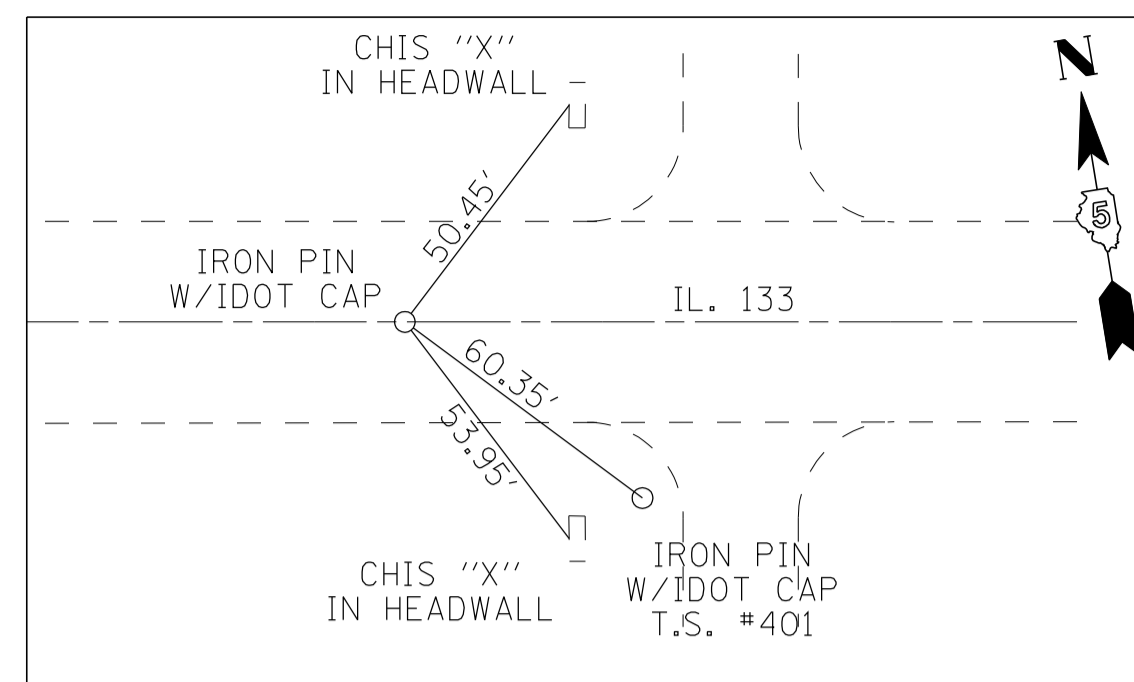
F.A.P. RTE.	SECTION	COUNTY	TOTAL SHEETS	SHEET NO.
749	(122BR)BR	COLES	49	10
STA.		TO STA.		
FED. ROAD DIST. NO.		ILLINOIS	FED. AID PROJECT	



P.O.T. STA. 922+33.24



P.O.T. STA. 933+50.00



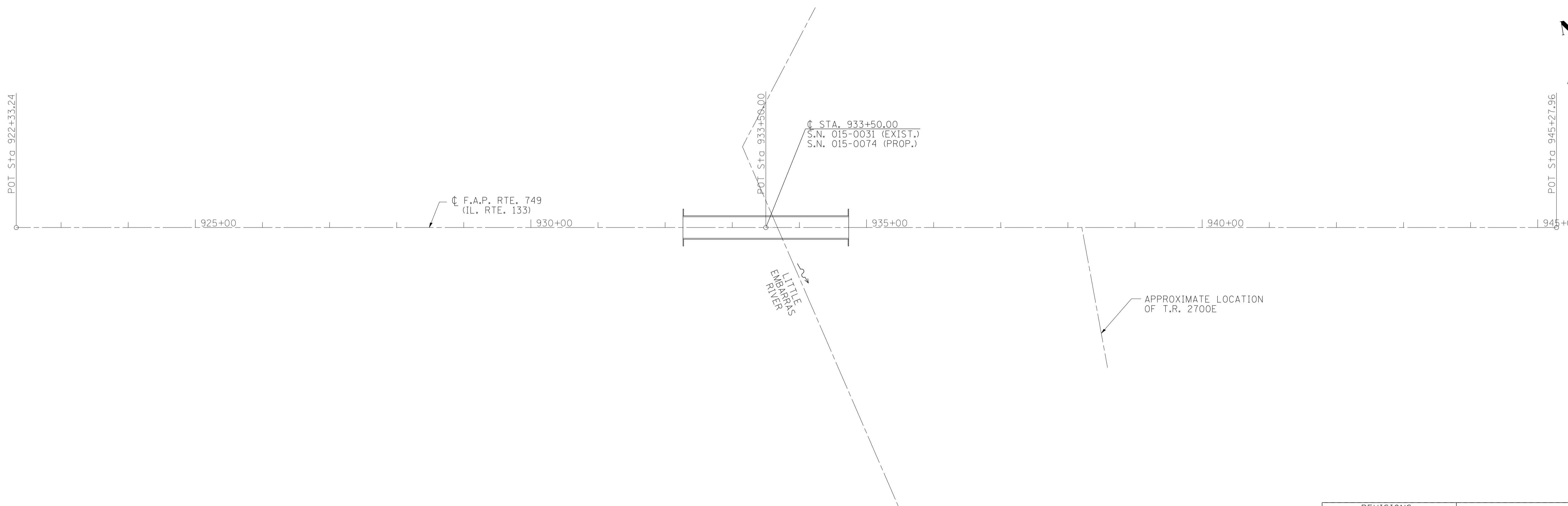
P.O.T. STA. 945+27.96

BENCHMARKS

BM 4672-1
CHISLED SQUARE ON TOP OF SOUTHWEST WINGWALL OF BRIDGE. STA. 932+44.28, 18.27' RT, ELEV. 636.85

BM 4672-2
CHISLED SQUARE ON TOP OF BRIDGE CURB. STA. 934+03.55, 15.91' RT, ELEV. 636.26

BM 4672-3
CHISLED SQUARE ON TOP OF SOUTHEAST WINGWALL OF BRIDGE. STA. 934+55.52, 17.91' RT, ELEV. 636.17



PLOT DATE = 7/24/2006
FILE NAME = F:\03\0301\06\Drawings\TextFiles\dgn
PLOT SCALE = 20.000' / IN.
USER NAME = Trucks

REVISIONS	
NAME	DATE

ILLINOIS DEPARTMENT OF TRANSPORTATION

**CONTROL TIES,
HORIZONTAL ALIGNMENT
AND BENCHMARKS**

SCALE NONE
DATE 1/06

DRAWN BY MLO
CHECKED BY PBB