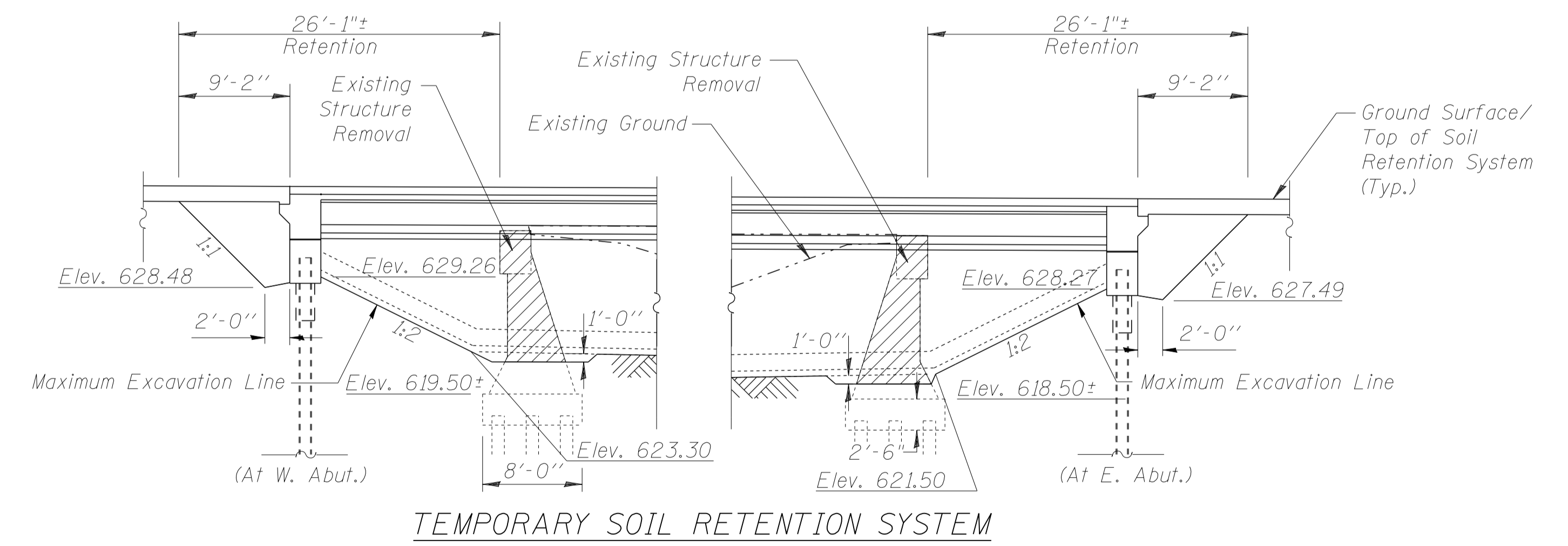
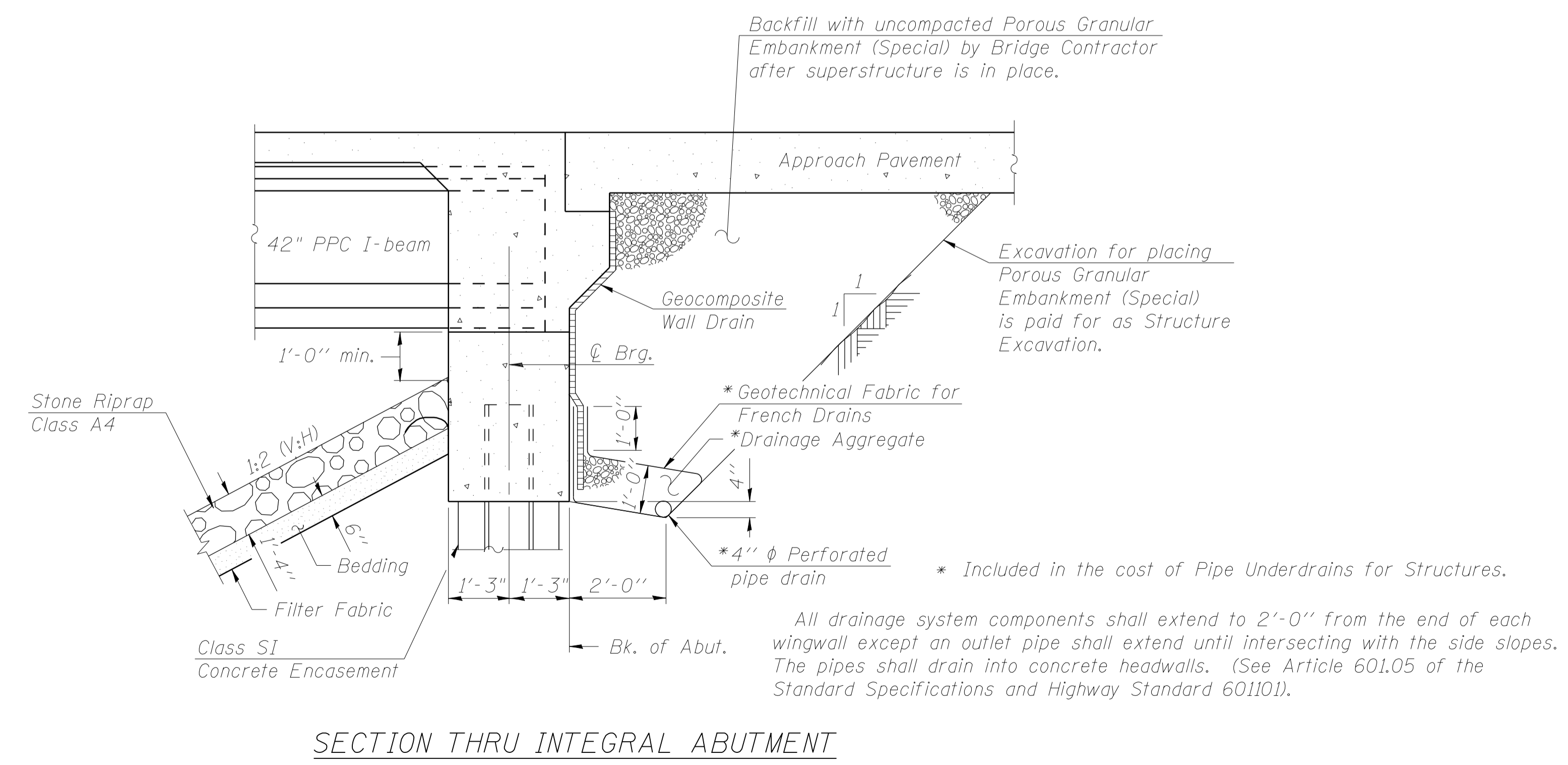
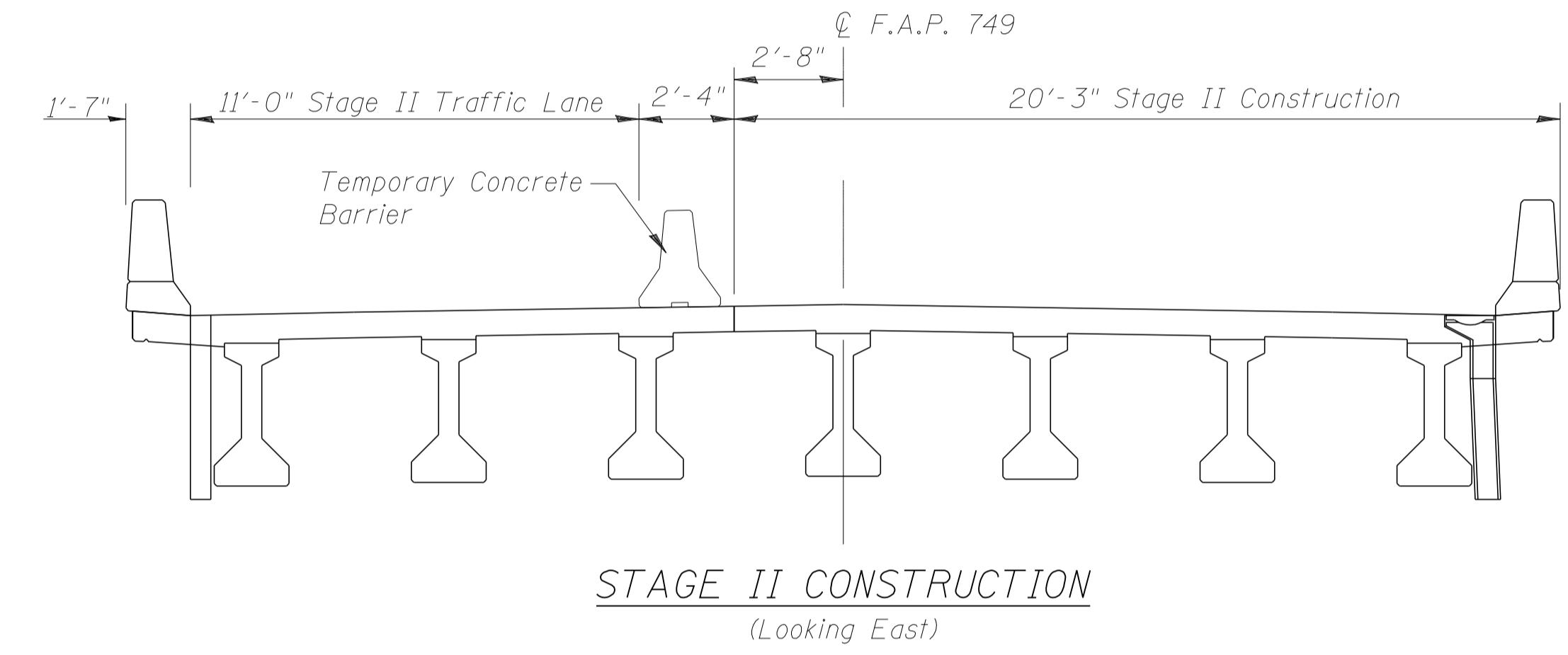
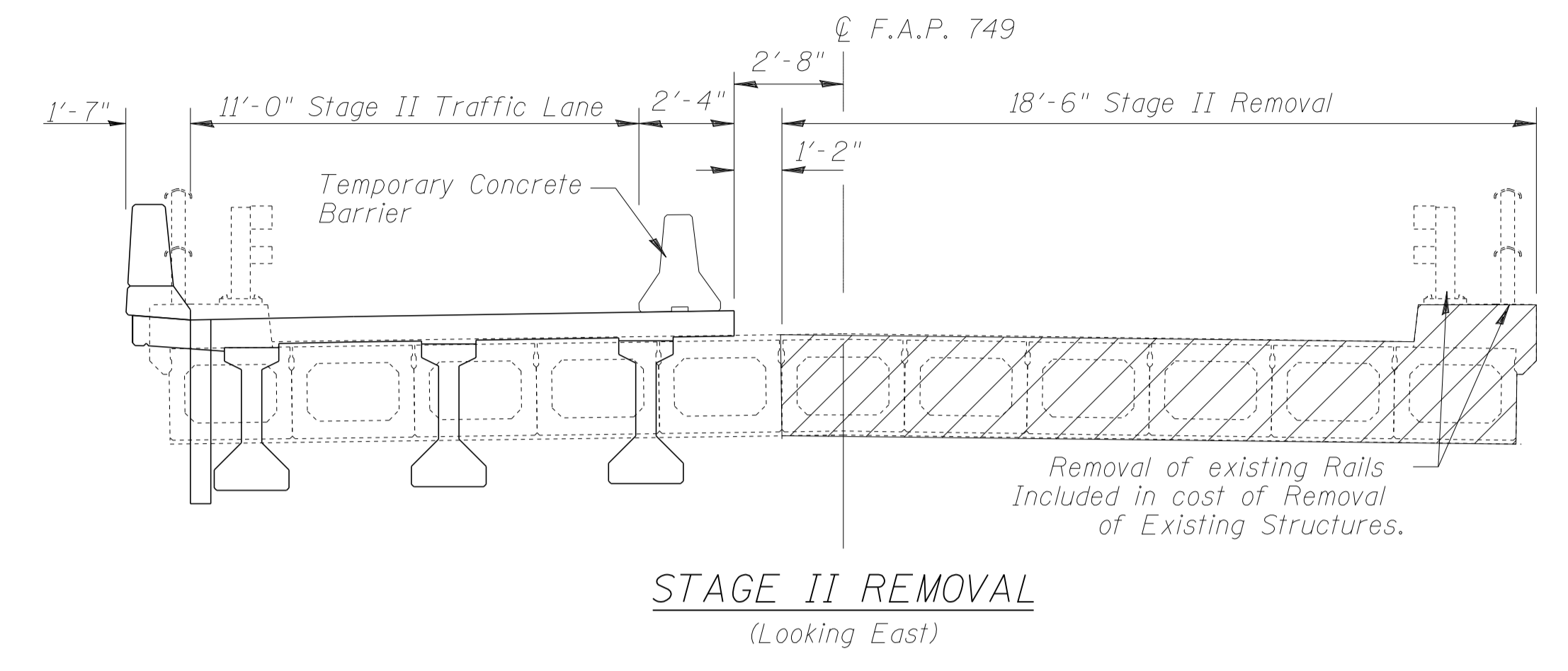


Note: See Roadway Plans for the Quantity of Temporary Concrete Barrier.



NOTES:
 A cantilevered sheet piling does not appear feasible and additional members or other retention systems may be necessary. The Contractor shall submit a temporary soil retention design including plan details and calculations for review and acceptance by the Engineer.
 Contractor's design to include provisions for retaining soil below the existing abutment cap between the counterforts, and behind the existing abutment cap above the footing.

ILLINOIS DEPARTMENT OF TRANSPORTATION
STAGE CONSTRUCTION DETAILS
 IL ROUTE 133 OVER THE
 LITTLE EMBARRAS RIVER
 F.A.P. ROUTE 749 SECTION (122BR)BR
 COLES COUNTY
 STATION 933+50.00
 STRUCTURE NO. 015-0074

DRAWN BY: MLO
 CHECKED BY: PBB
 DATE: MARCH 2006