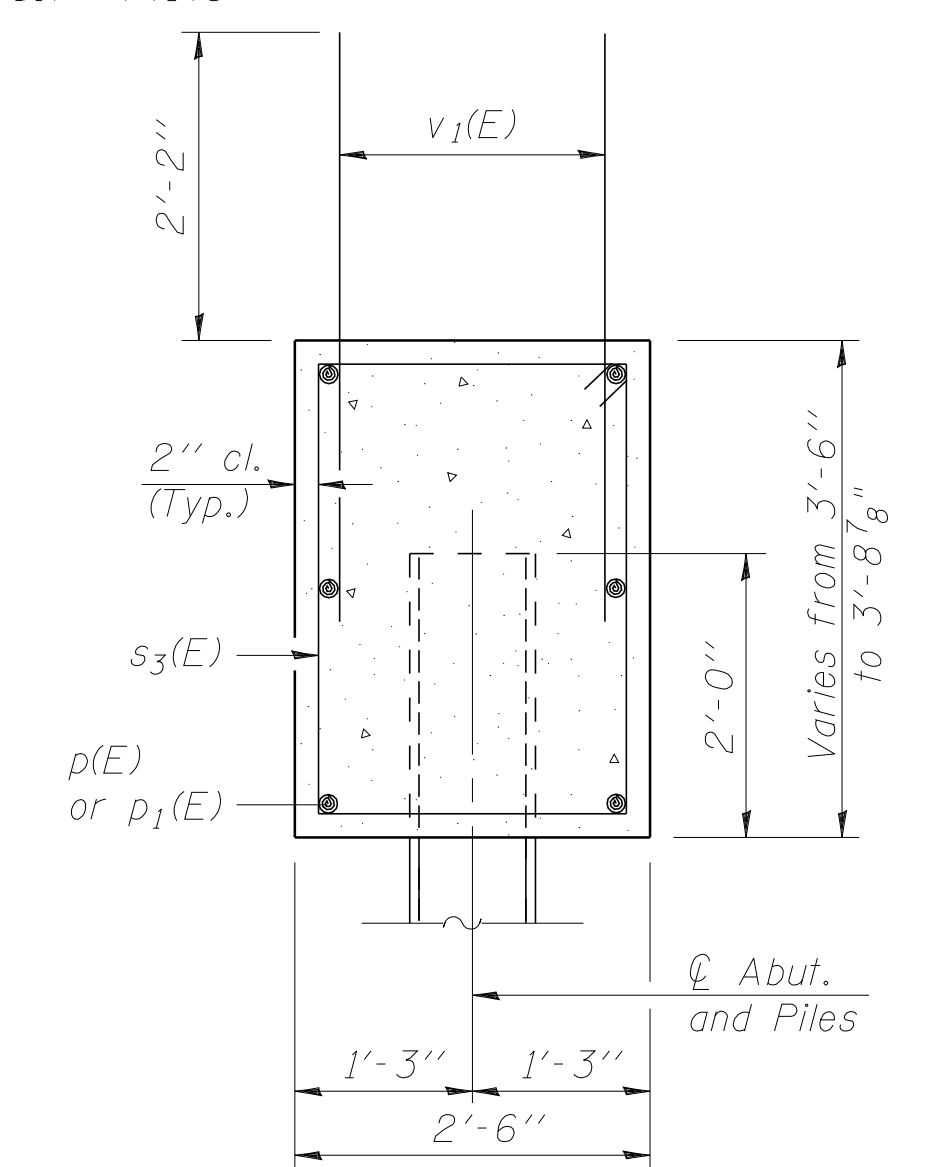


ELEVATION
(Looking East)
(East Abutment Shown/West Abutment Similar)



SEC. THRU ABUT.

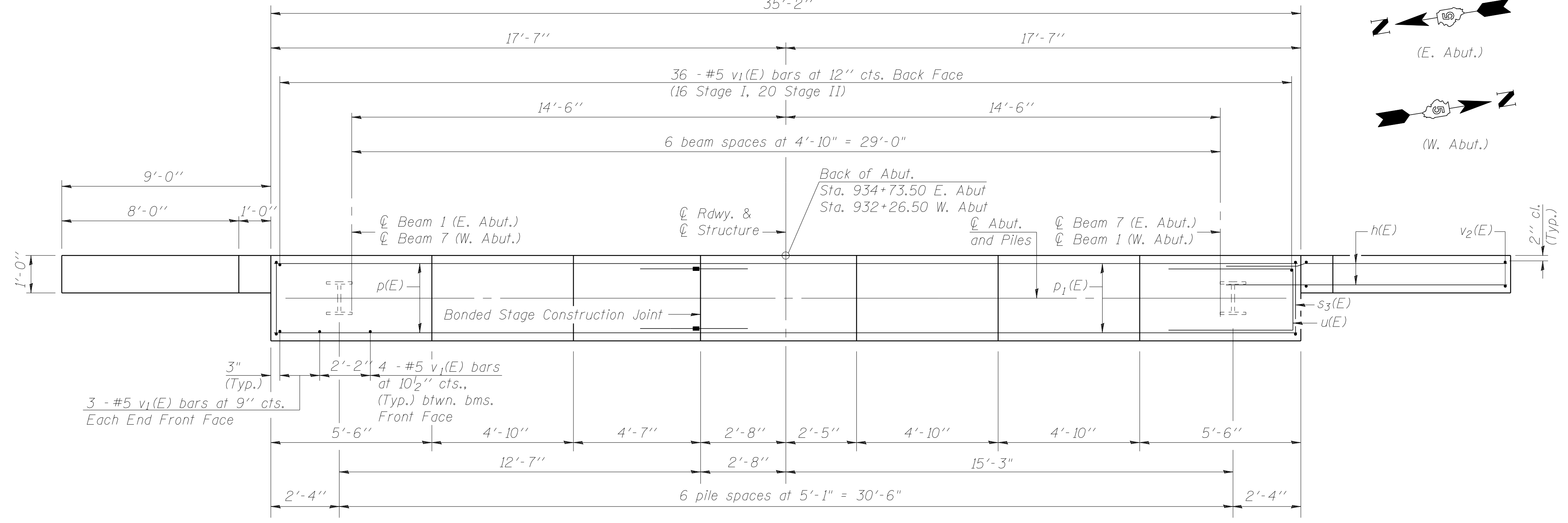
BILL OF MATERIAL
(Both Abutments)

Bar	No.	Size	Length	Shape
h(E)	72	#5	12'-0"	—
p(E)	12	#7	14'-7"	—
p1(E)	12	#7	19'-11"	—
s3(E)	72	#5	11'-7"	□
u(E)	16	#6	12'-1"	—
v1(E)	132	#5	4'-4"	—
v2(E)	40	#5	10'-10"	—
Item		Unit	Quantity	
Furnishing Steel Piles		Foot	462	
HP 10x42				
Driving Steel Piles		Foot	462	
Concrete Structures		Cu. Yd.	31.5	
Reinforcement Bars, Epoxy Coated		Pound	4350	
Structure Excavation		Cu. Yd.	271.2	

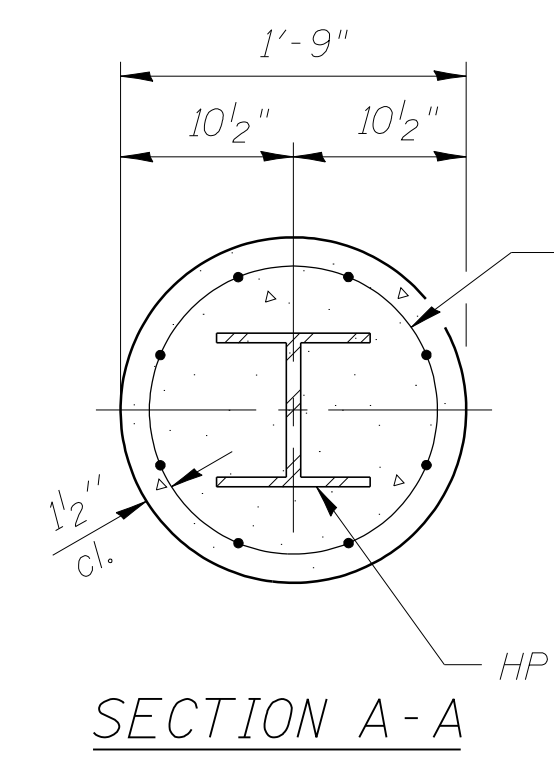
NOTES
 * E. Abutment = 135.6 Cu. Yd.
 W. Abutment = 135.6 Cu. Yd.
 Pour steps monolithically with cap.
 Reinforcement bars designated (E) shall be epoxy coated.
 See sheet 9 of 24 for diaphragm details.
 All edges shall have standard 3/4" chamfers except as noted.

PILE DATA
 Type: HP 10 x 42
 Driven to: Refusal
 Est. Length: 33' each Abutment
 No. Required: 14

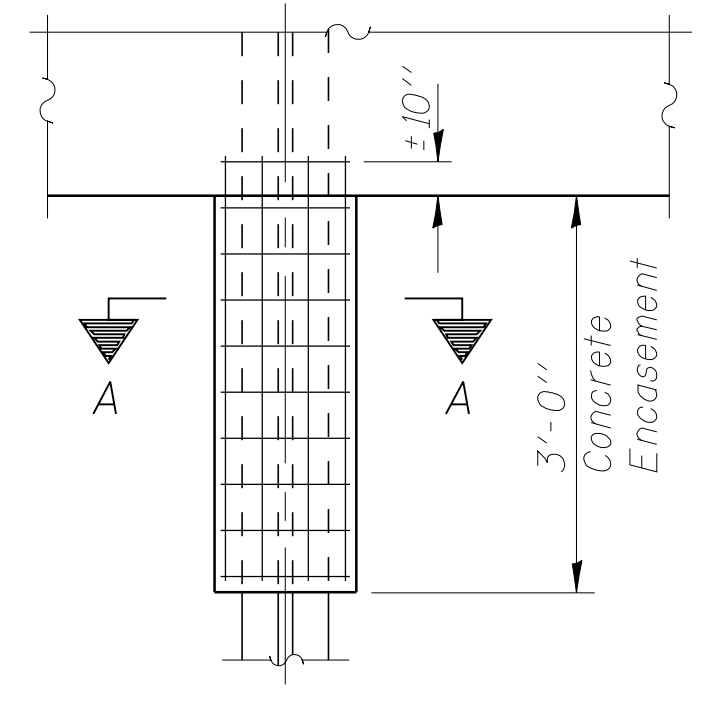
ILLINOIS DEPARTMENT OF TRANSPORTATION
ABUTMENTS
 IL ROUTE 133 OVER THE
 LITTLE EMBARRAS RIVER
 F.A.P. ROUTE 749 SECTION (122BR)BR
 COLES COUNTY
 STATION 933+50.00
 STRUCTURE NO. 015-0074
 DATE: MARCH 2006
 DRAWN BY: MLO
 CHECKED BY: PBB



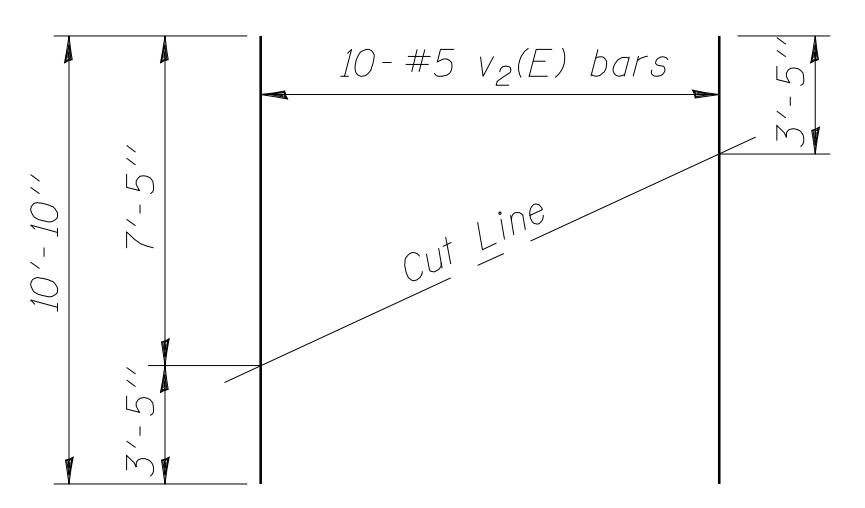
PLAN
(E. Abut. Shown)
(W. Abut. Similar)



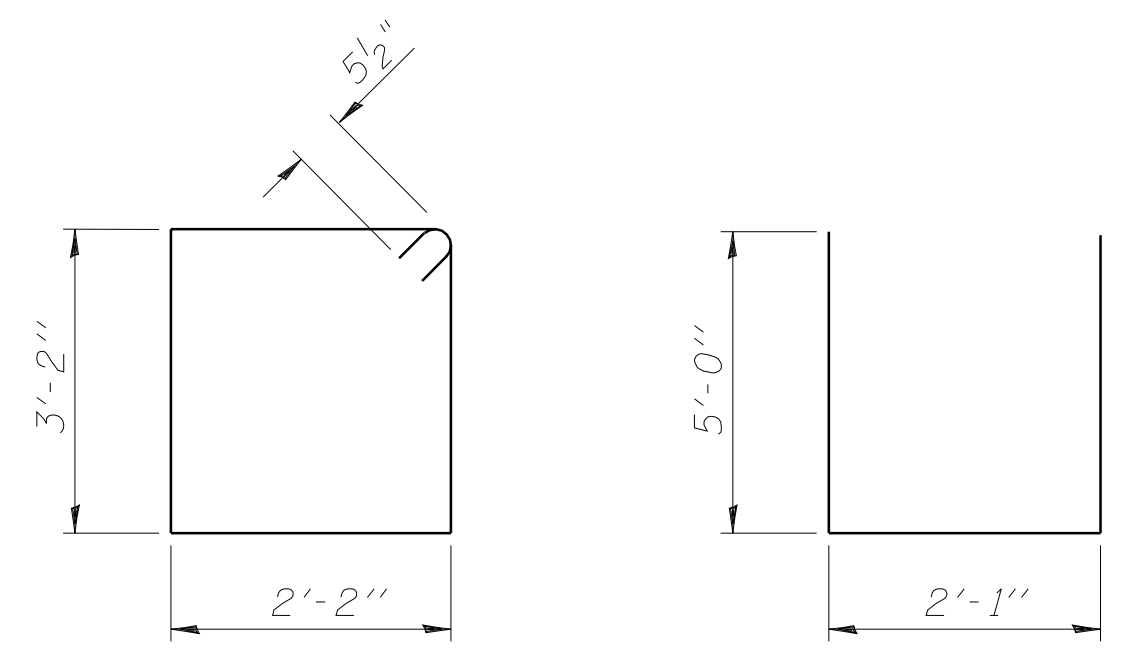
Welded wire fabric
 6 x 6-W4.0 x W4.0
 weighing 58#/100 sq. ft.
 The cost of Excavation,
 Concrete Encasement
 and Reinforcement is included
 with Furnishing Piles.
 Forms for Encasement may
 be omitted when soil
 conditions permit.



PILE ENCASEMENT DETAIL



FIELD CUTTING DIAGRAM
 Order v2(E) full length. Cut as shown and use remainder of bars in opposite face.



BAR s2(E)
BAR u(E)