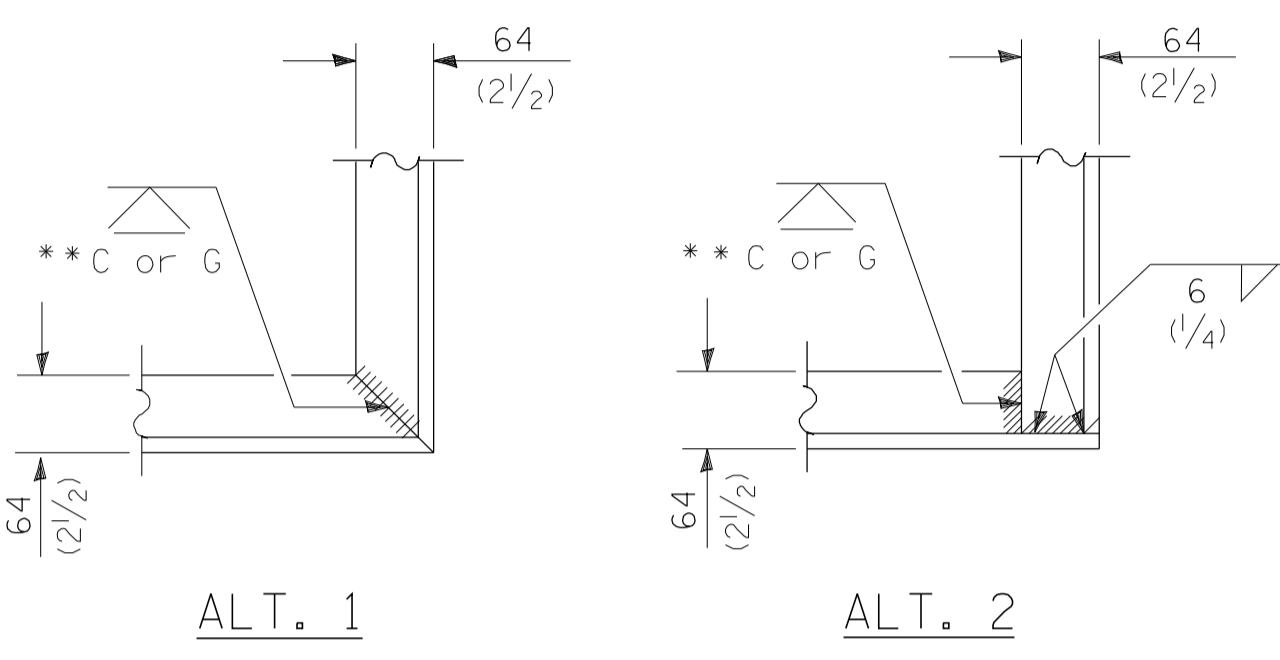
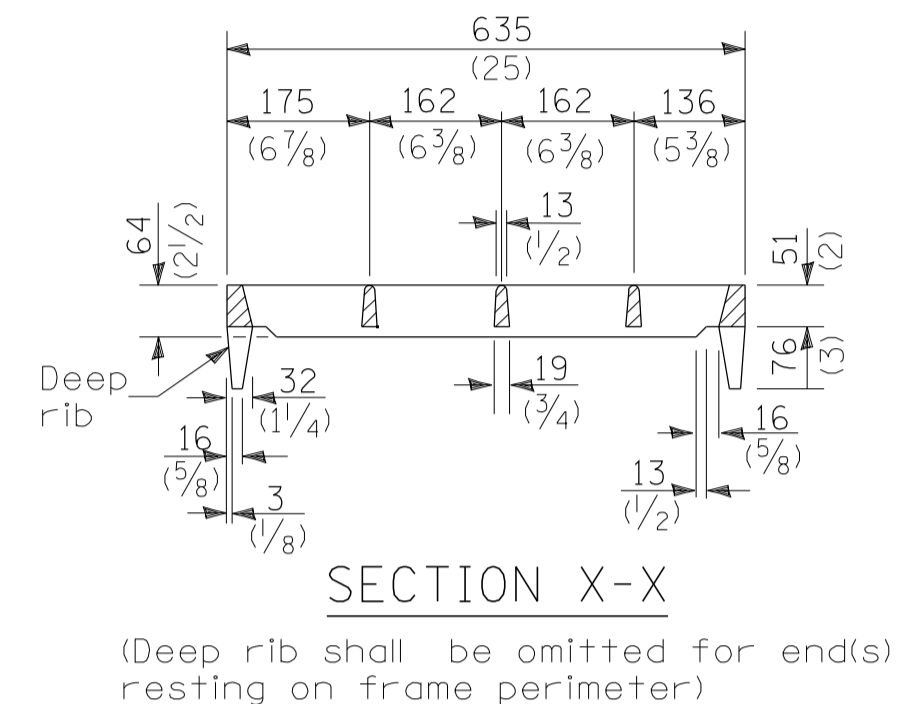
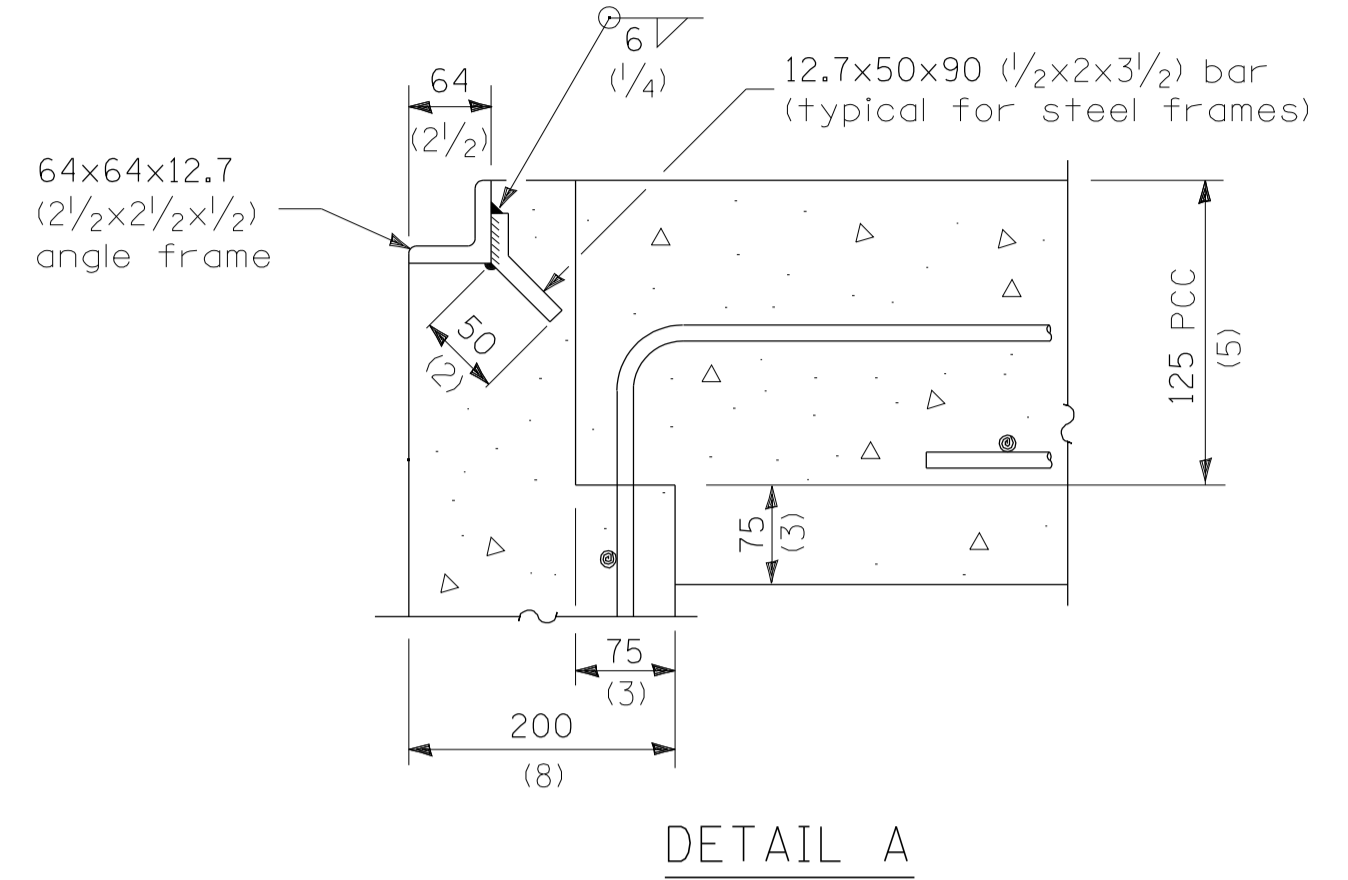
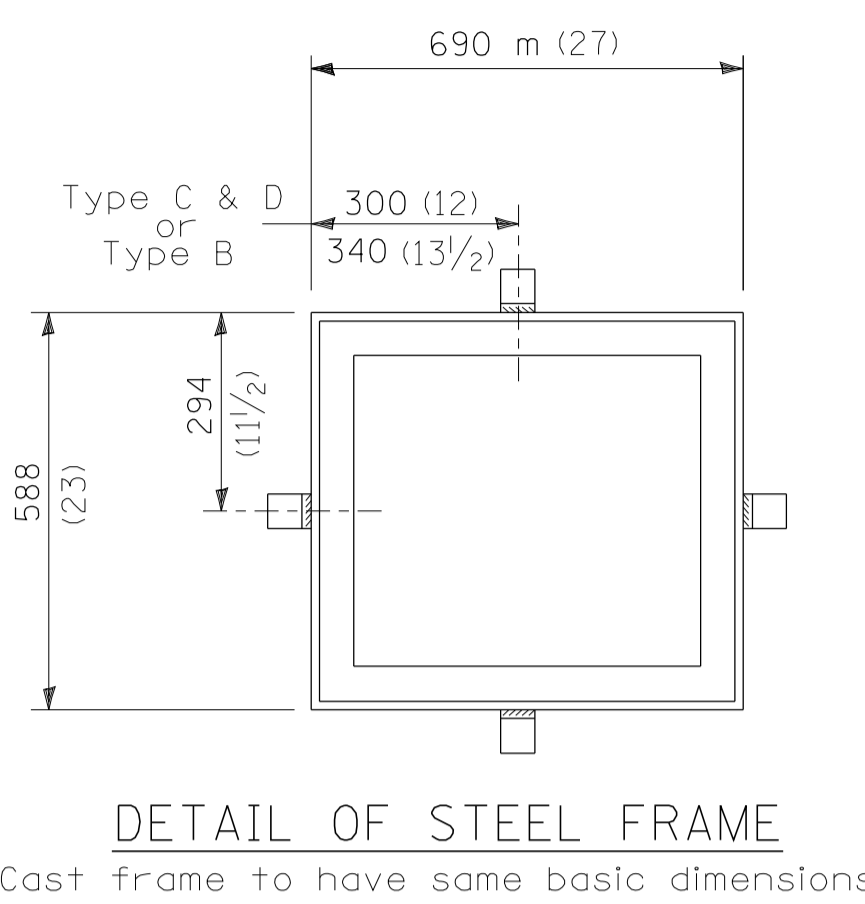
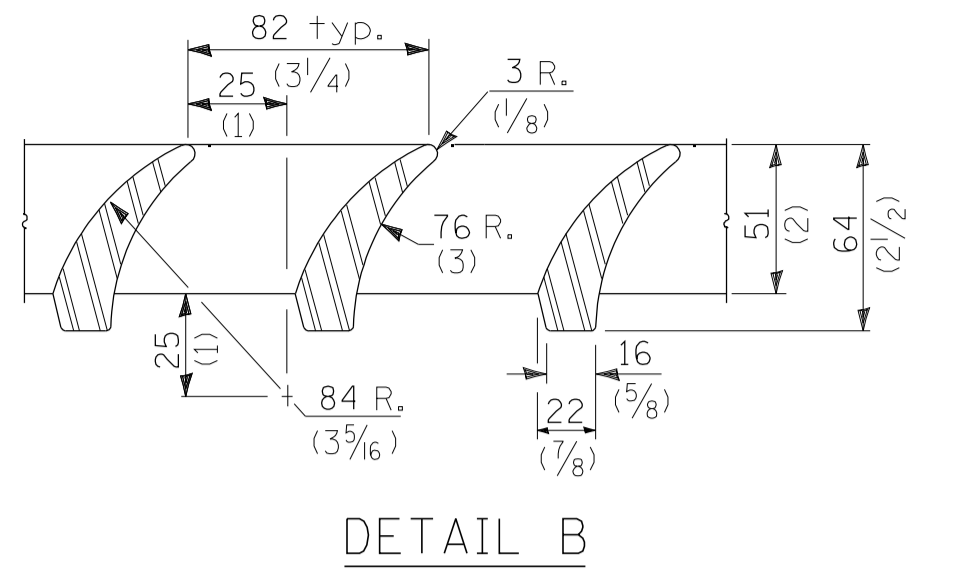
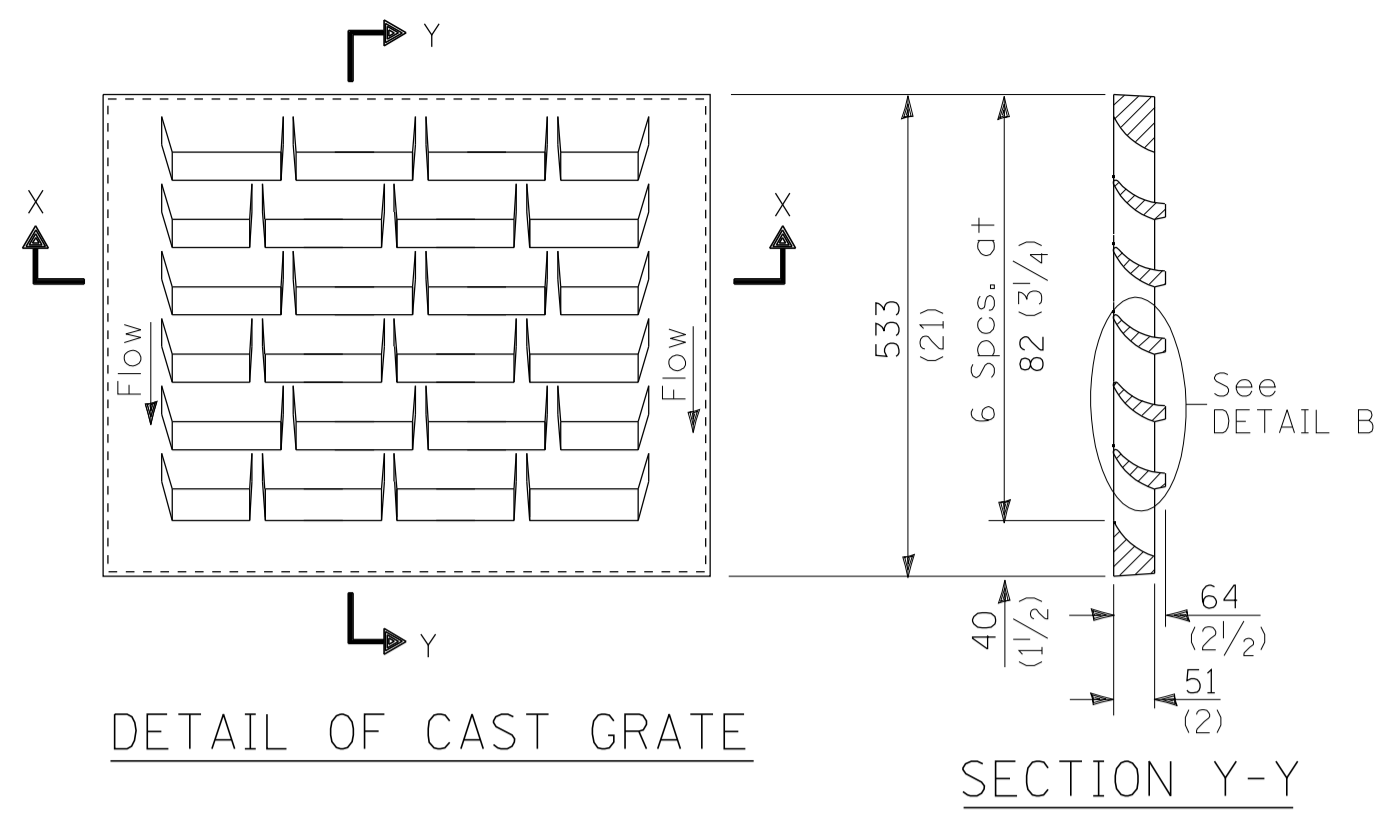
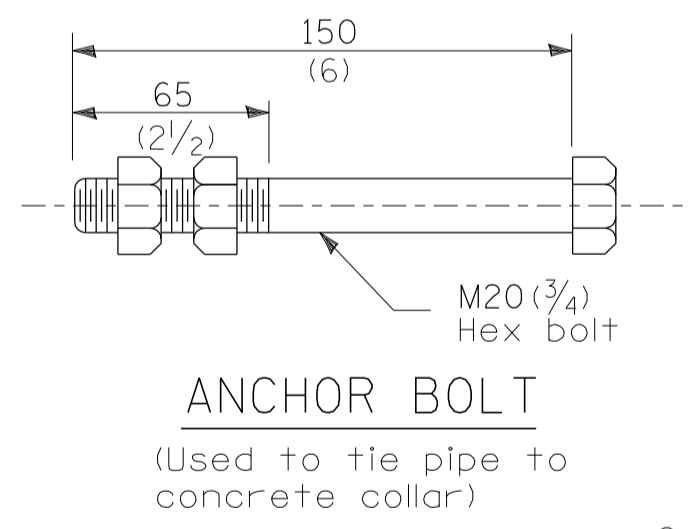
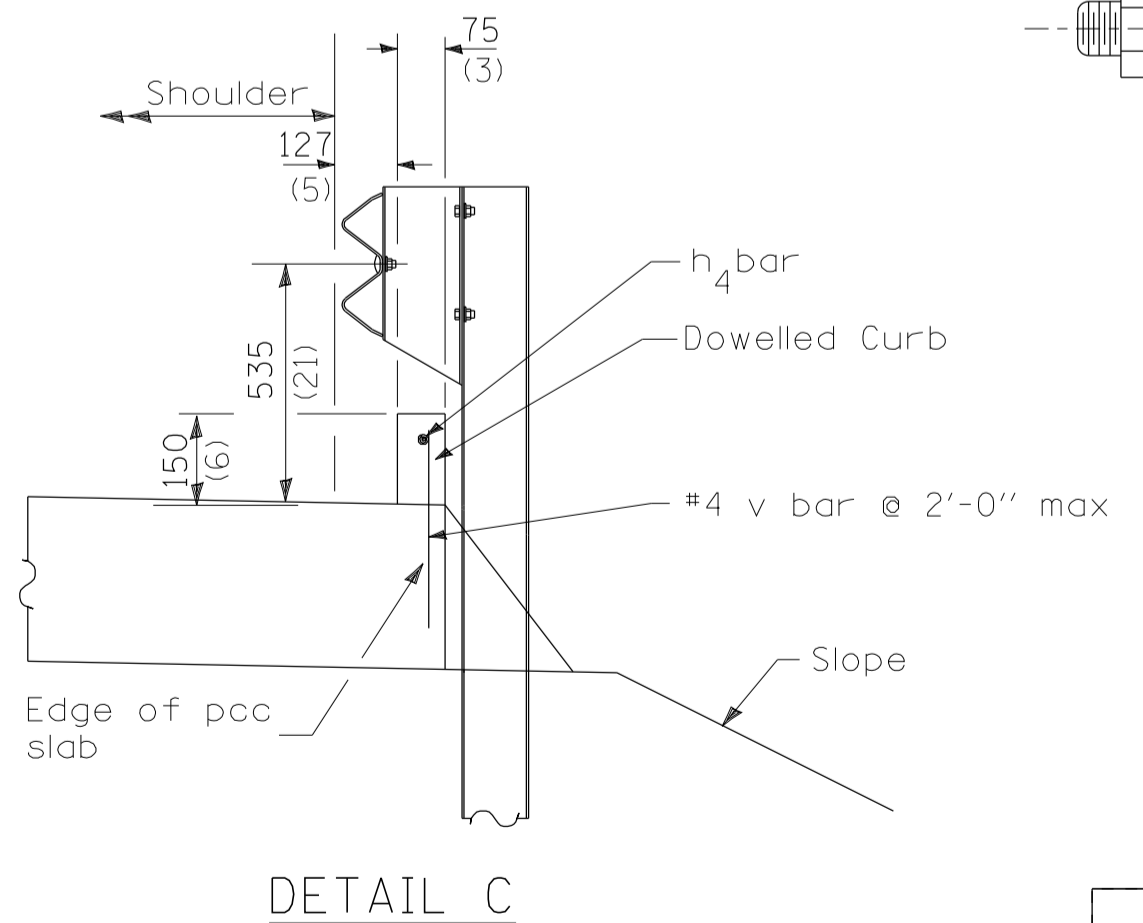
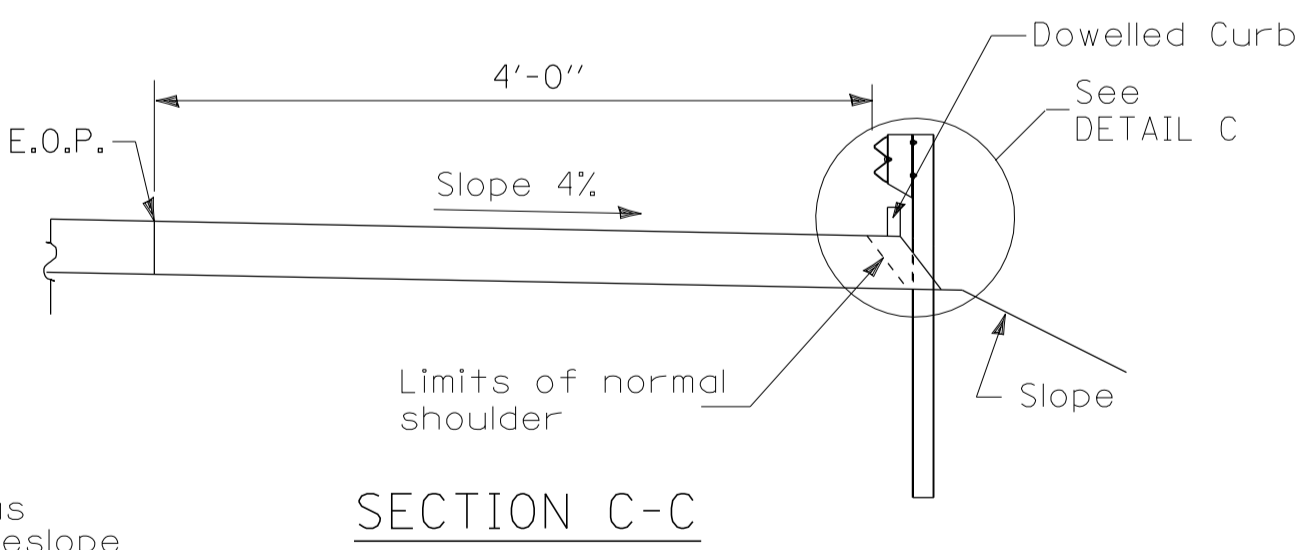
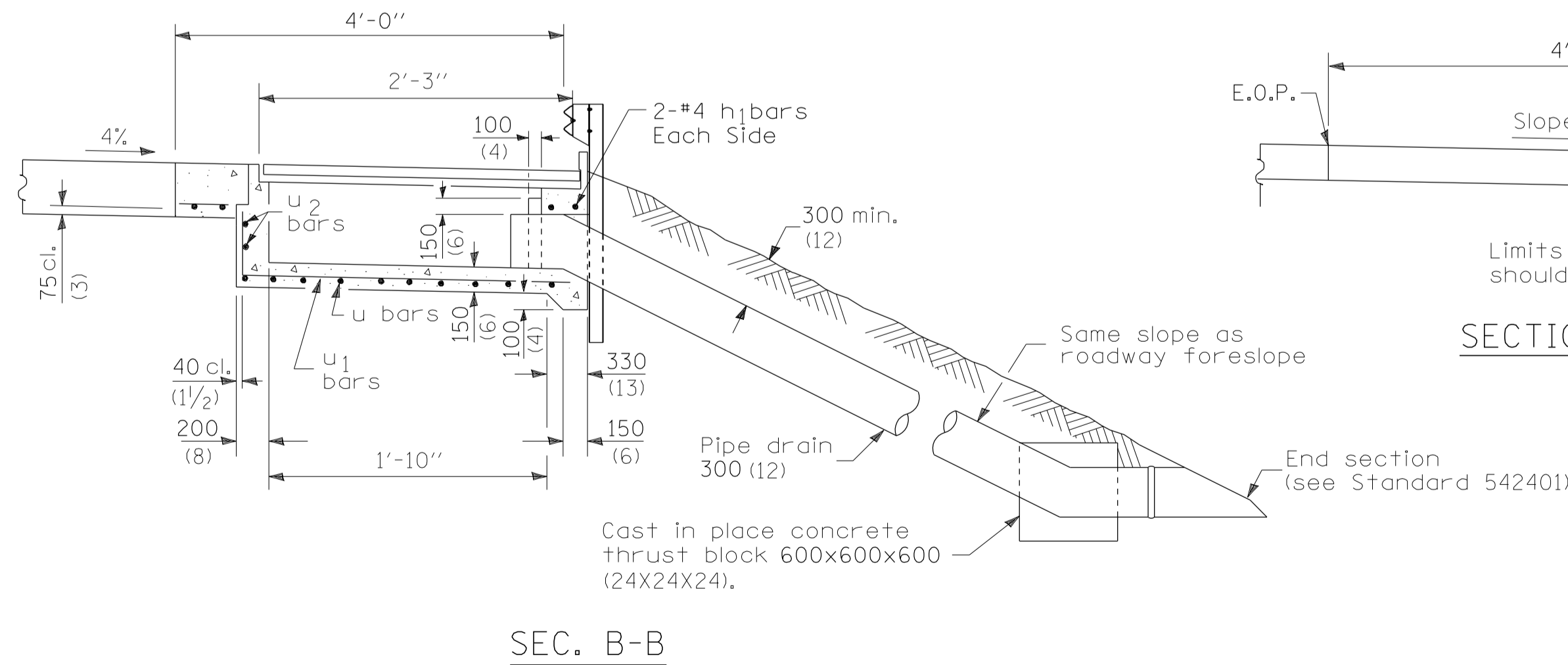
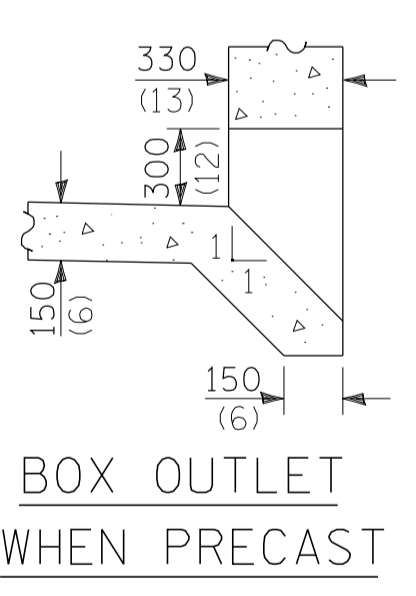
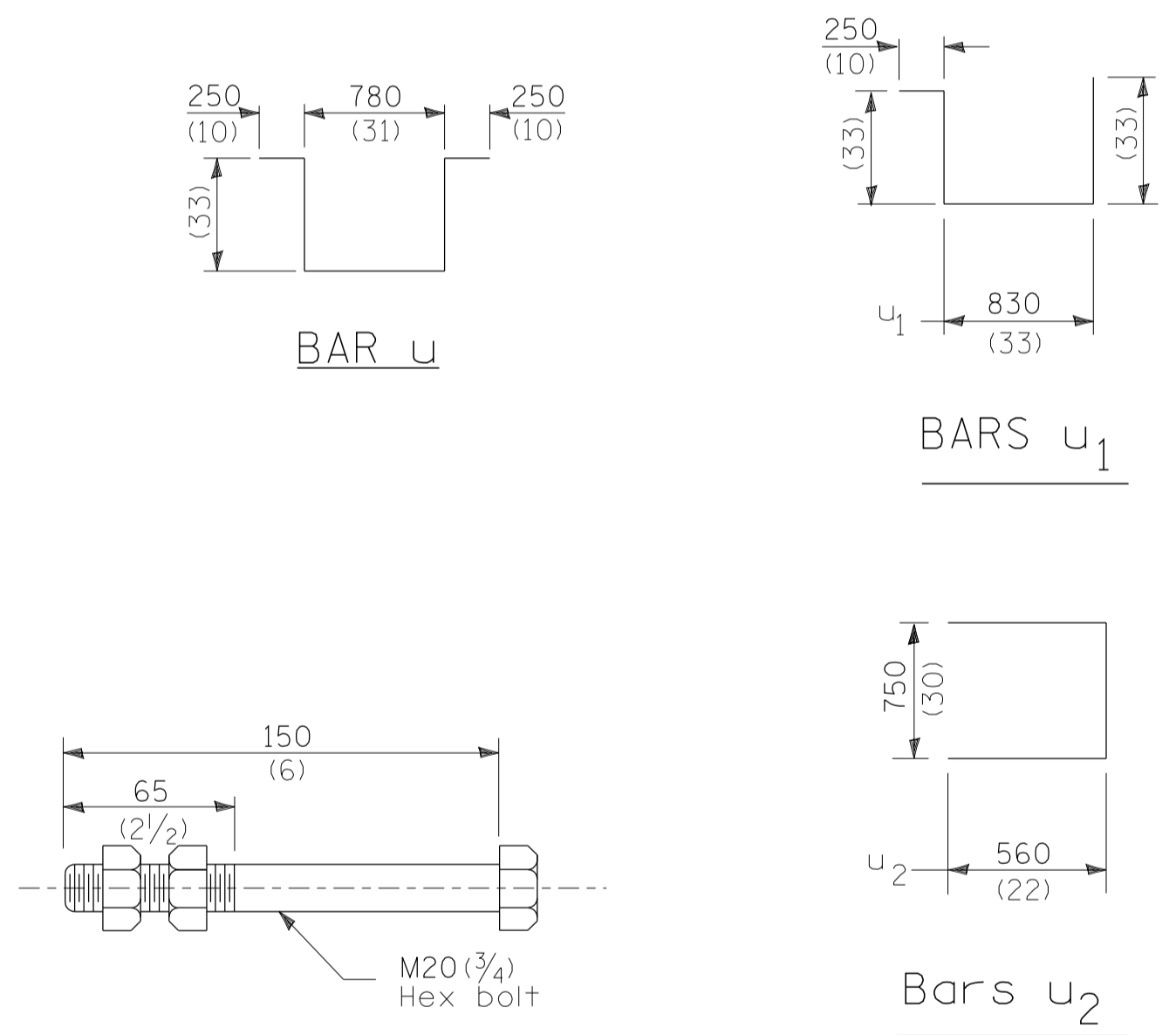
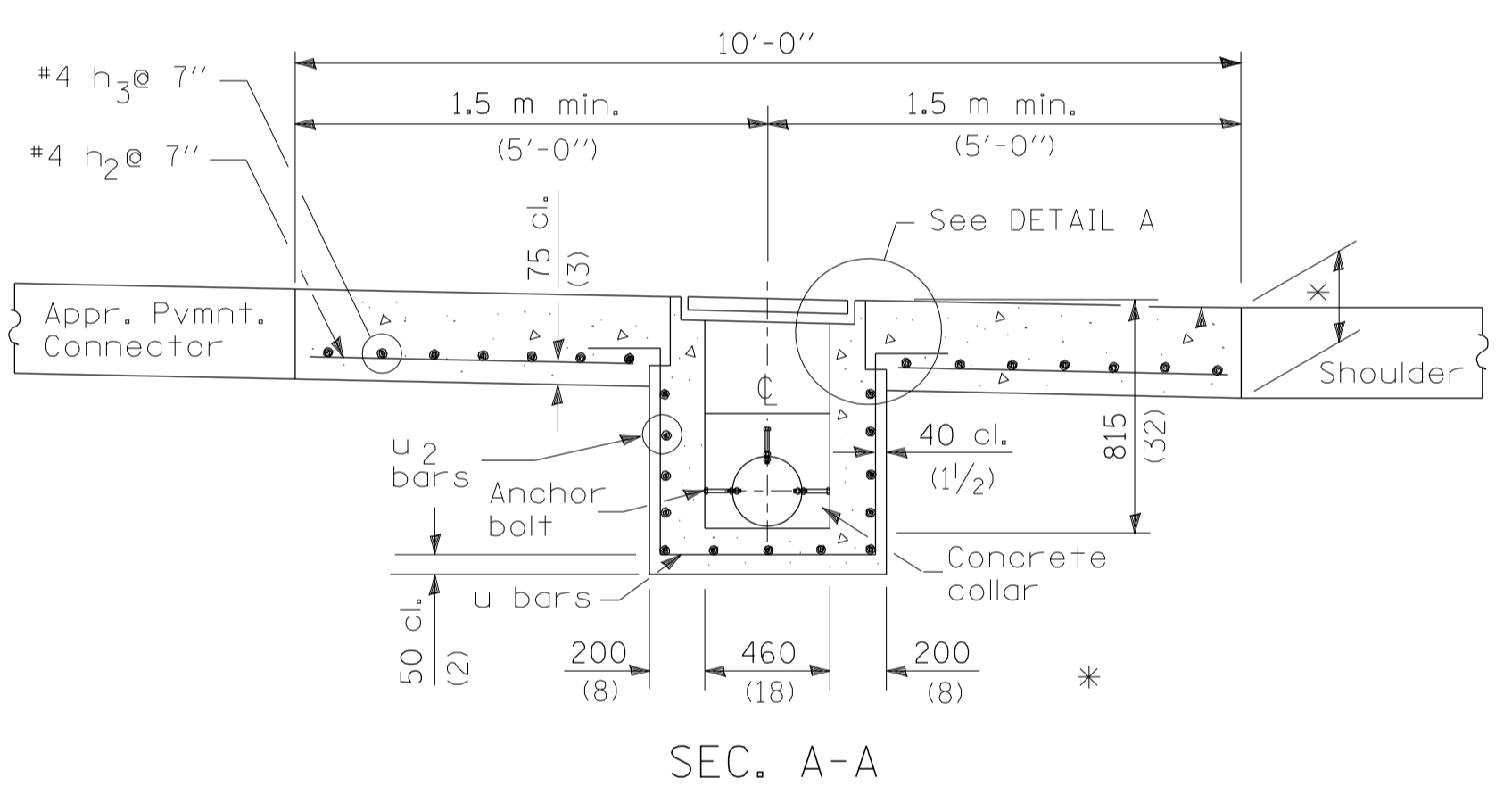
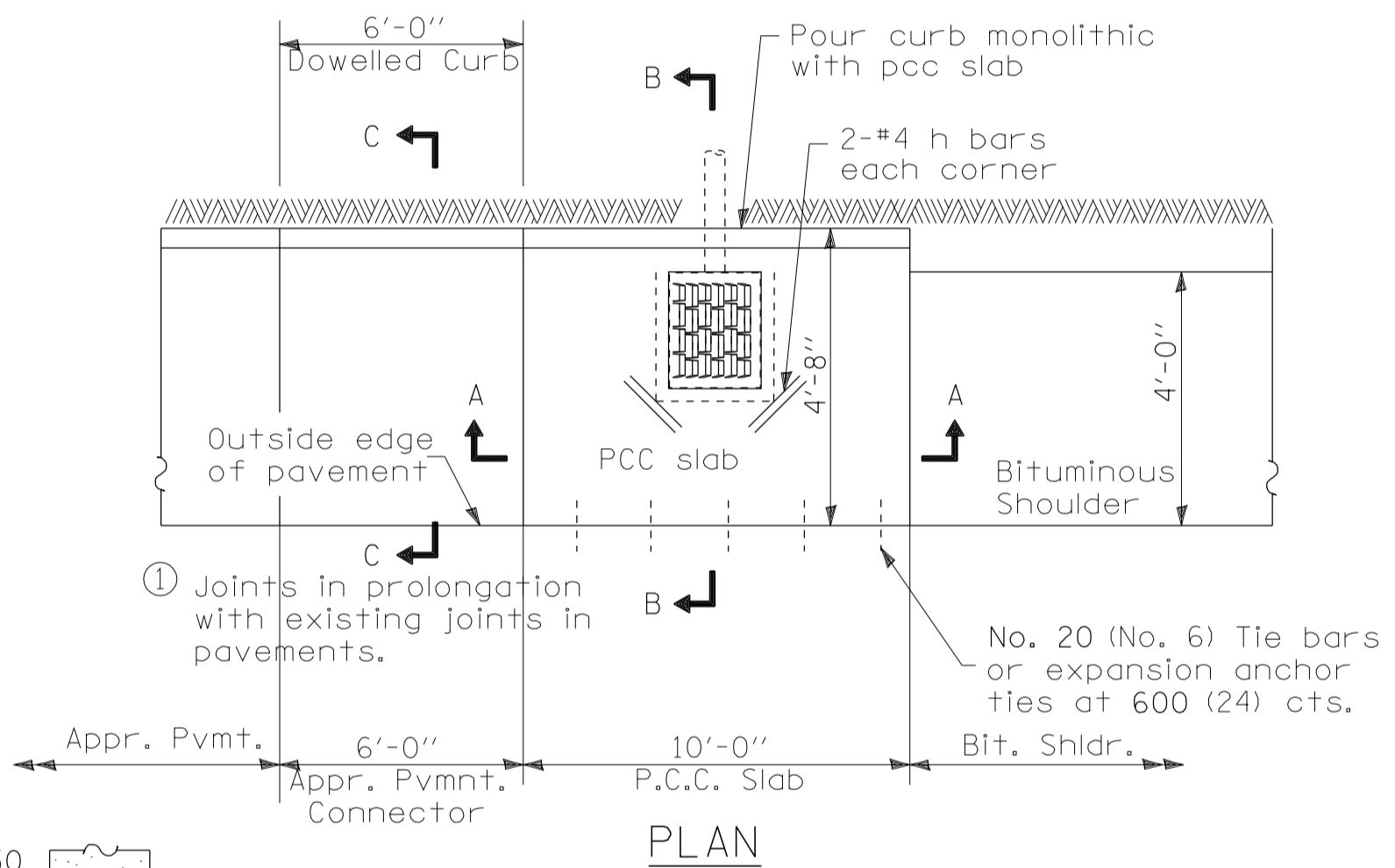


F.A.P. RTE.	SECTION	COUNTY	TOTAL SHEETS	SHEET NO.
749	(122BR)BR	COLES	49	38
STA.	TO STA.			
FED. ROAD DIST. NO.	ILLINOIS	FED. AID PROJECT		



REQUIRED MATERIAL			
TYPE B INLET AND PCC SLAB			
Bar	Qty.	Size	Length
h	8	(No.4)	4'-0"
h ₁	4	(No.4)	9'-8"
h ₂	12	(No.4)	3'-2"
h ₃	14	(No.4)	4'-4"
h ₄	2	(No.4)	15'-8"
u	4	(No.4)	9'-9"
u ₁	3	(No.4)	9'-11"
u ₂	6	(No.4)	6'-2"
v	20	(No.4)	10"
Concrete	cu. yds.		0.9
Reinf. bars	lbs.		216
Grating	sq. ft.		3.6



GENERAL NOTES
 See Standard 420001 for joint details not shown.
 All exposed edges of the inlet, except the upper perimeter, shall be beveled 20 mm (3/4").
 All dimensions are in millimeters (inches) unless otherwise shown.
 The cost of PCC slab shall be included in the cost of Type B Inlet Box, Standard 609001 (SPECIAL)

REVISIONS	
NAME	DATE

ILLINOIS DEPARTMENT OF TRANSPORTATION

ROADWAY DETAILS

DATE: 01/06
 DRAWN BY: MLO
 CHECKED BY: PBB

SHOULDER INLET WITH CURB DETAIL

PLOT DATE = 7/24/2006
 FILE NAME = F:\03\0301\05\0\Drawings\Details.dgn
 PLOT SCALE = 20.0000 / 1 IN.
 USER NAME = Trucks