

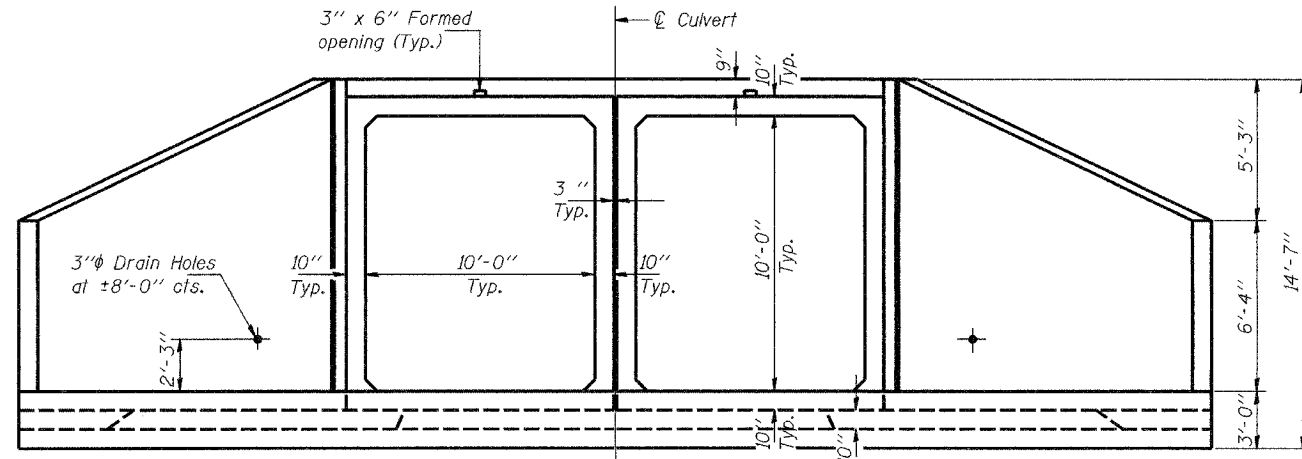
Notes: Bars indicated thus 3 x 2-#4 etc. indicates 3 line of bars with 2 lengths per line.  
 Reinforcement bars designated (E) shall be epoxy coated.  
 Cost of Class X Concrete and Reinforcement Bars, Epoxy Coated is incidental to "Precast Concrete Box Culverts."

STATE OF ILLINOIS  
 DEPARTMENT OF TRANSPORTATION

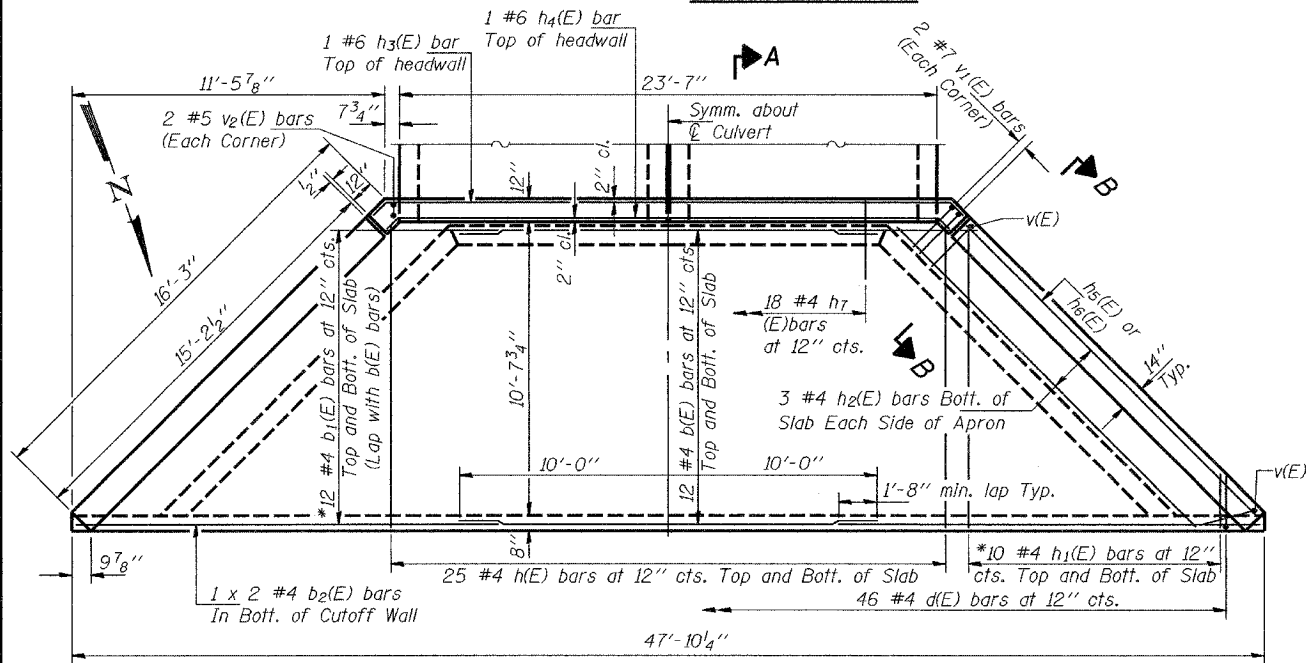
Course aggregate full length of both headwalls. To be placed by Grading Contractor. Cost incidental to contract.

ROUTE NO.	SECTION	COUNTY	SHEET NO.	SHEET	SHEET NO.
FAP 710	116.119	SHELBY & MOUNTAINE	77	43	5
FED. ROAD DIST. NO. 7	ILLINOIS	FED. AID PROJECT			6 SHEETS

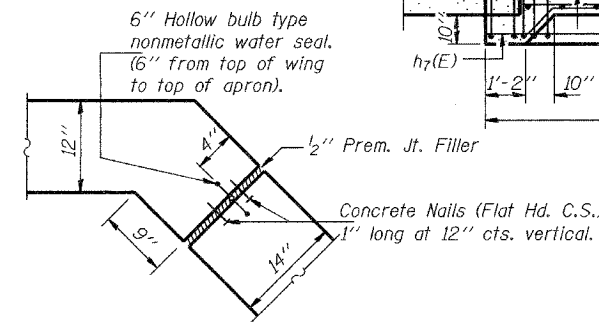
Contract 90773



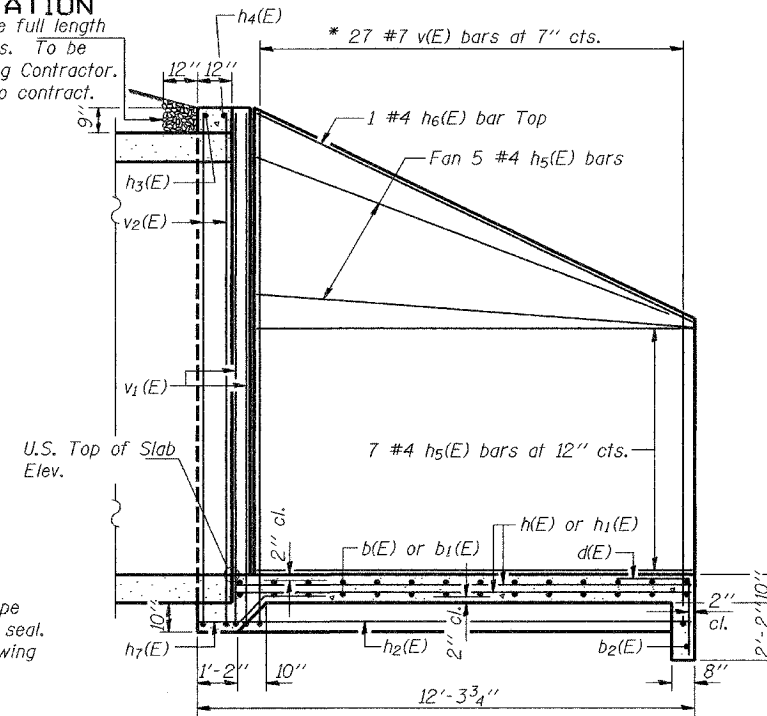
END ELEVATION



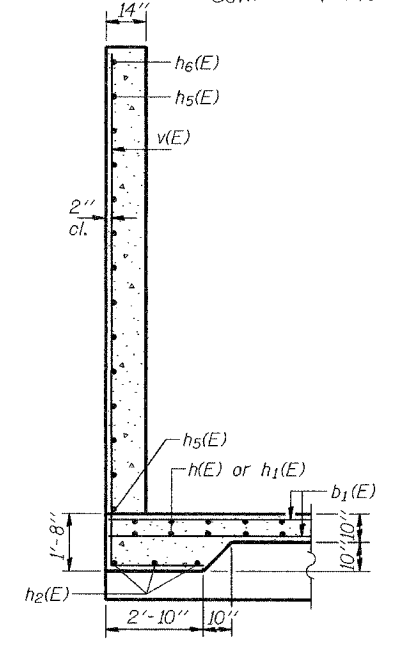
PLAN OF APRON



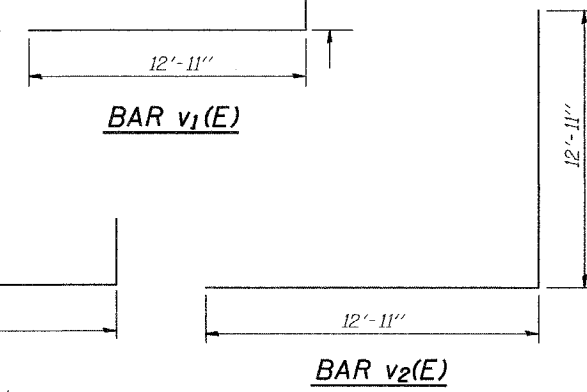
CORNER DETAIL



SECTION A-A



SECTION B-B



BAR v<sub>1</sub>(E)

BAR v(E)

BAR v<sub>2</sub>(E)

BILL OF MATERIAL

ONE END SECTION

For information only

Bar	No.	Size	Length	Shape
b <sub>1</sub> (E)	24	#4	20'-0"	—
b <sub>2</sub> (E)	24	#4	20'-10"	—
b <sub>2</sub> (E)	2	#4	24'-8"	—
d(E)	46	#4	4'-9"	┘
h(E)	50	#4	12'-0"	—
h <sub>1</sub> (E)	20	#4	13'-4"	—
h <sub>2</sub> (E)	6	#4	16'-0"	—
h <sub>3</sub> (E)	1	#6	26'-5"	—
h <sub>4</sub> (E)	1	#6	25'-1"	—
h <sub>5</sub> (E)	24	#4	14'-10"	—
h <sub>6</sub> (E)	2	#4	15'-9"	—
h <sub>7</sub> (E)	18	#4	3'-8"	—
v(E)	27	#7	25'-8"	┘
v <sub>1</sub> (E)	4	#7	14'-1"	┘
v <sub>2</sub> (E)	4	#5	25'-10"	—

Reinforcement Bars	Pound	3500
Epoxy Coated		
Class X Concrete	Cu. Yd.	34.9

ITEM	UNIT	QUANT.
Box Culvert End Section	Each	2

DESIGN STRESSES

f<sub>y</sub> = 60,000 psi  
 f'<sub>c</sub> = 3,500 psi

\* FIELD CUTTING DIAGRAMS

Order b<sub>1</sub>(E), h<sub>1</sub>(E) and v(E) bars full length. Cut to fit as shown and use remainder of bars in opposite side of apron or opposite wing.

STRUCTURE 070-2015 APRON DETAILS

DESIGNED DF
CHECKED JDC
DRAWN
CHECKED