

| F.A.P. RTE. | SECTION | COUNTY | TOTAL SHEETS | SHEET NO. |
|-------------|---------|--------|--------------|-----------|
| | | COLES | 17 | 1 |

D7 SIGNAL MODERNIZATION 2007-1

D-97-077-06

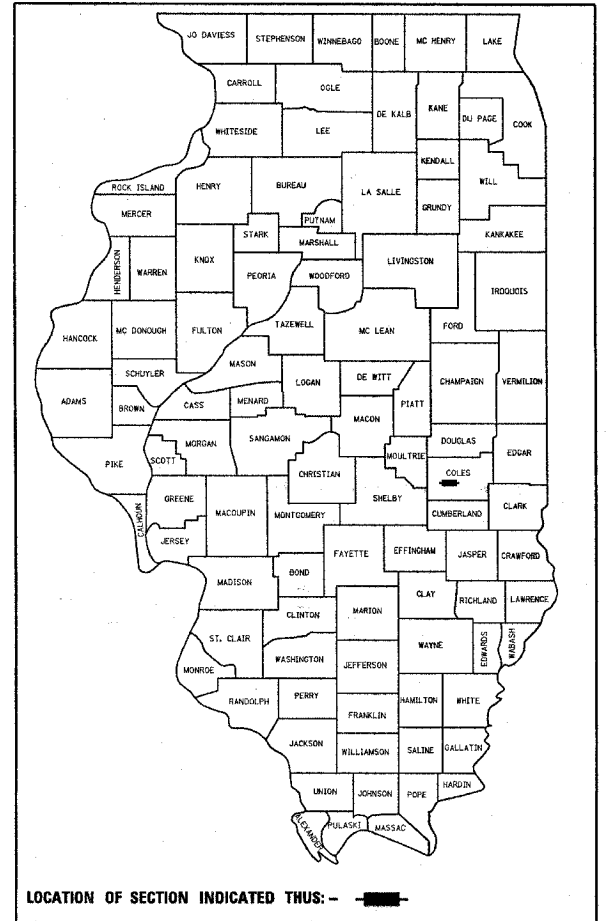
STATE OF ILLINOIS
DEPARTMENT OF TRANSPORTATION
DIVISION OF HIGHWAYS

**PROPOSED
HIGHWAY PLANS**

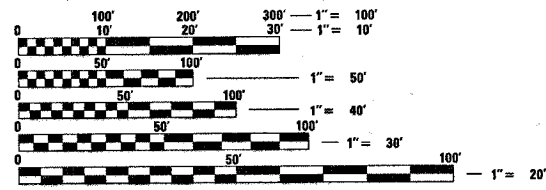
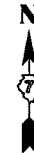
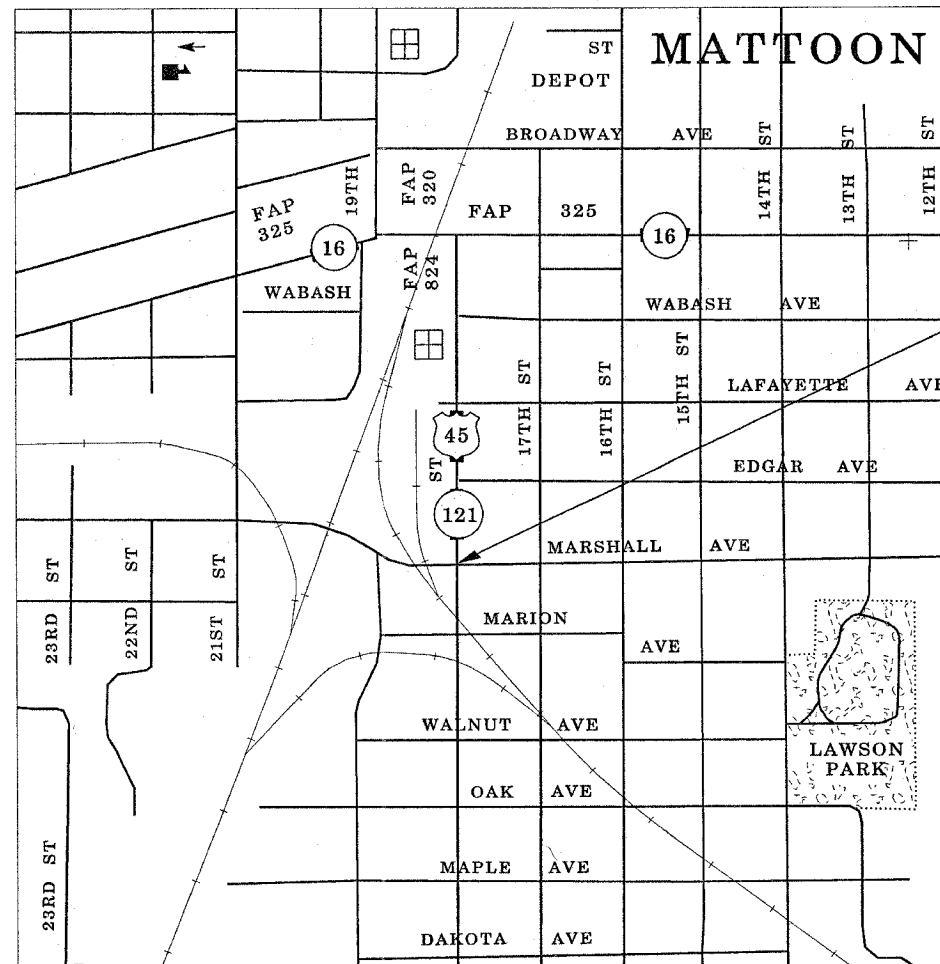
FAP ROUTE 824 (US ROUTE 45)
D7 SIGNAL MODERNIZATION 2007-1
PROJECT SBP-0824(015)
COLES COUNTY

C-97-123-06

FOR INDEX OF SHEETS, SEE SHEET NO. 2



LOCATION OF PROJECT
US 45 AND MARSHALL AVE.
IN MATTOON



FULL SIZE PLANS HAVE BEEN PREPARED USING STANDARD
ENGINEERING SCALES. REDUCED SIZED PLANS WILL NOT
CONFORM TO STANDARD SCALES. IN MAKING MEASUREMENTS
ON REDUCED PLANS, THE ABOVE SCALES MAY BE USED.

J.U.L.I.E.
JOINT UTILITY LOCATION INFORMATION FOR EXCAVATION
1-800-892-0123

STATE OF ILLINOIS
DEPARTMENT OF TRANSPORTATION
DIVISION OF HIGHWAYS

SUBMITTED Aug. 16 2006
Christine M. Reuter
DEPUTY DIRECTOR OF HIGHWAYS, REGION ENGINEER

October 13, 20 06
Mike Hine
ENGINEER OF DESIGN AND ENVIRONMENT

October 13, 20 06
Milton R. Sosa, P.E.
DIRECTOR OF HIGHWAYS, CHIEF ENGINEER

**PRINTED BY THE AUTHORITY
OF THE STATE OF ILLINOIS**

PROJECT ENGINEER : ROB MACKLIN
SQUAD LEADER :
DESIGNER : LYNN MCCLELLAN
TELEPHONE : 217/7342-3951 EX 245

district
8/16/2006
c:\projects\view\74205\d\07706pa.dgn