

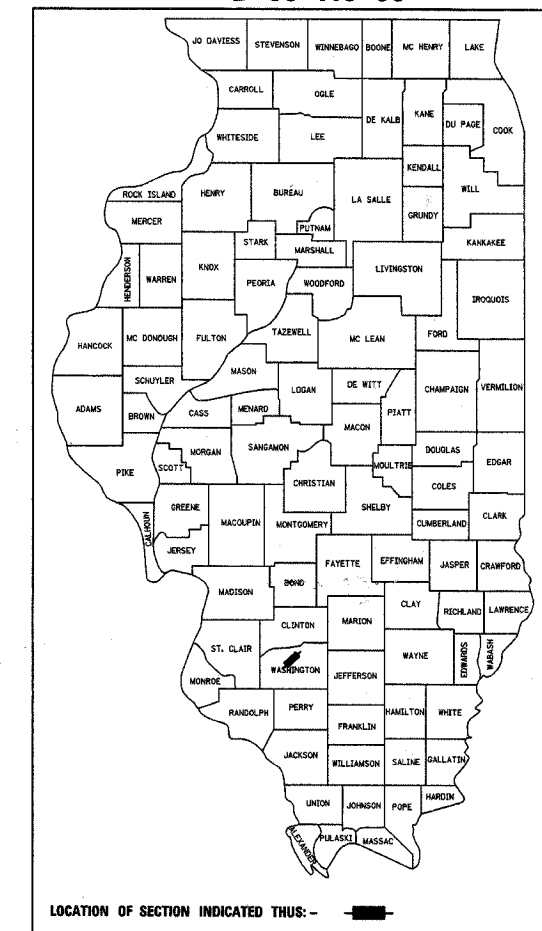
FAP ROUTE	SECTION	COUNTY	TOTAL SHEETS	SHEET NO.
42	2BR	WASHINGTON	34	1

CONTRACT NO. 76389

STATE OF ILLINOIS
DEPARTMENT OF TRANSPORTATION
DIVISION OF HIGHWAYS

**PROPOSED
HIGHWAY PLANS**
FAP ROUTE 42 (IL 127)
SECTION 2BR
PROJECT: F-0042(097)
WASHINGTON COUNTY
C-98-140-05
STRUCTURE REPLACEMENT

D-98-119-00



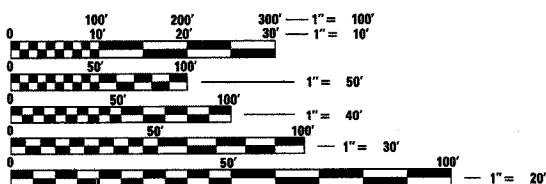
INDEX OF SHEETS

- 1 COVER SHEET
- 2 GENERAL NOTES, COMMITMENTS
- 3-3A SUMMARY OF QUANTITIES
- 4-5 TYPICAL SECTIONS
- 6 SCHEDULES
- 7-8 STAGE 1 CONSTRUCTION
- 9-10 STAGE 2 CONSTRUCTION
- 11 PLAN & PROFILE
- 12 BRIDGE APPROACH PAVEMENT DETAIL
- 13 GUARDRAIL AND SHOULDER DETAILS
- 14 PAVEMENT MARKING DETAILS
- 15-30 BRIDGE PLANS SN 095-0076
- 31-33 CROSS SECTIONS

HIGHWAY STANDARDS

280001-02	635011-01
420001-06	701006-02
420401-05	701011-01
515001-02	701201-02
542401	701311-02
601101	701321-08
609006-02	701326-02
630001-06	702001-06
630301-03	704001-02
631031-05	780001-01
631046-02	781001-02
635006-02	

MICROFILMED _____
REEL NUMBER _____
AWARDED _____
RESIDENT ENGINEER _____
AS BUILT CHANGES WERE MADE
ON THE FOLLOWING SHEETS



FULL SIZE PLANS HAVE BEEN PREPARED USING STANDARD ENGINEERING SCALES. REDUCED SIZED PLANS WILL NOT CONFORM TO STANDARD SCALES. IN MAKING MEASUREMENTS ON REDUCED PLANS, THE ABOVE SCALES MAY BE USED.

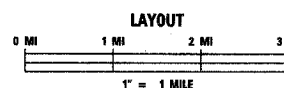
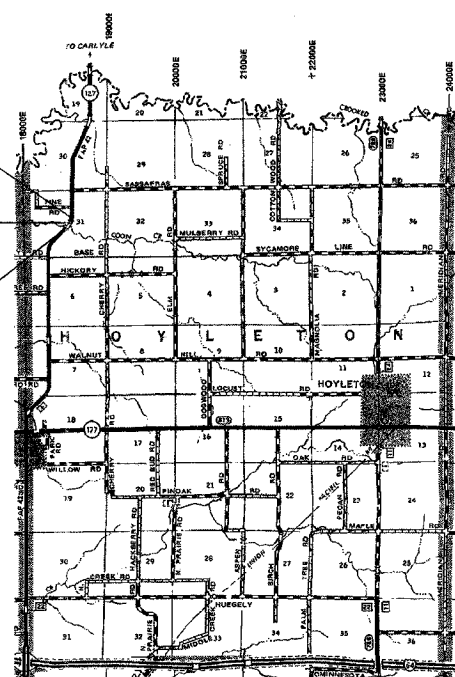
J.U.L.I.E.
JOINT UTILITY LOCATION INFORMATION FOR EXCAVATION
1-800-892-0123

CONTRACT NO. 76389

BEGIN IMPROVEMENT
STA 483+27

STA 487+25 PROPOSED STRUCTURE NO. 095-0076
ONE SPAN WF BEAM BRIDGE WITH INTEGRAL
ABUTMENTS, 85'-6" BK TO BK ABUTMENTS,
40'-2" O TO O DECK, SKEW 0°

END IMPROVEMENT
STA 491+23



LATITUDE X: 38.4853°
LONGITUDE Y: 89.3586°



Michael D. Cummins (7/20/2005)
ILLINOIS PROFESSIONAL NO. 43244
(Expires 11/30/05)

GROSS LENGTH = 796.00 FEET 0.151 MILES
NET LENGTH = 796.00 FEET 0.151 MILES

CUMMINS ENGINEERING CORPORATION
SPRINGFIELD, ILLINOIS

STATE OF ILLINOIS
DEPARTMENT OF TRANSPORTATION
DIVISION OF HIGHWAYS

SUBMITTED May 17, 2006
Max Cummins
DEPUTY DIRECTOR OF HIGHWAYS, REGION ENGINEER

June 30, 2006
Mike Hine
ENGINEER OF DESIGN AND ENVIRONMENT

June 30, 2006
Milton R. Sees, P.E. P.D.
DIRECTOR OF HIGHWAYS, CHIEF ENGINEER

PRINTED BY THE AUTHORITY
OF THE STATE OF ILLINOIS

PROJECT ENGINEER: PATTI LeBEAU (618) 346-3179
SQUAD CONTACT: ARTHUR MUEHLFELD (618) 346-3209