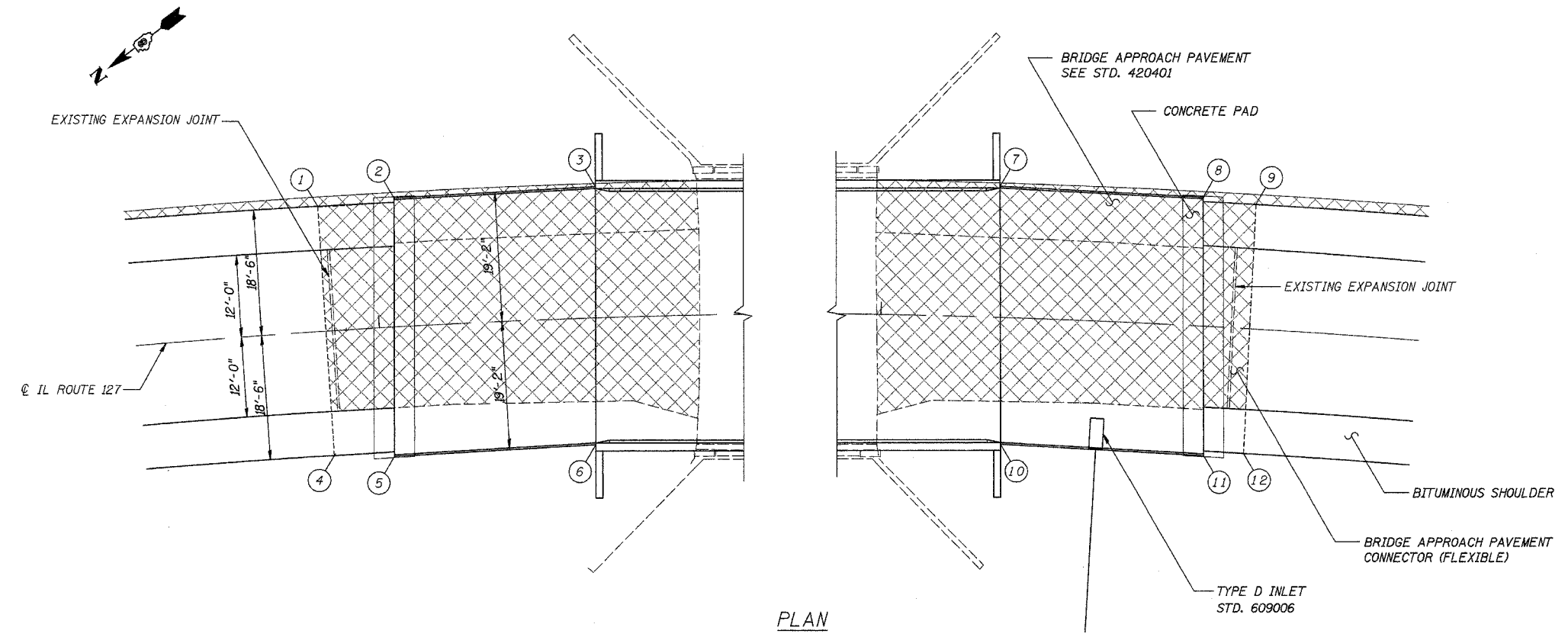


FAP ROUTE	SECTION	COUNTY	TOTAL SHEETS	SHEET NO.
42	2BR	WASHINGTON	33	12
STA.		TO STA.		
EXISTING CONDITIONS:				

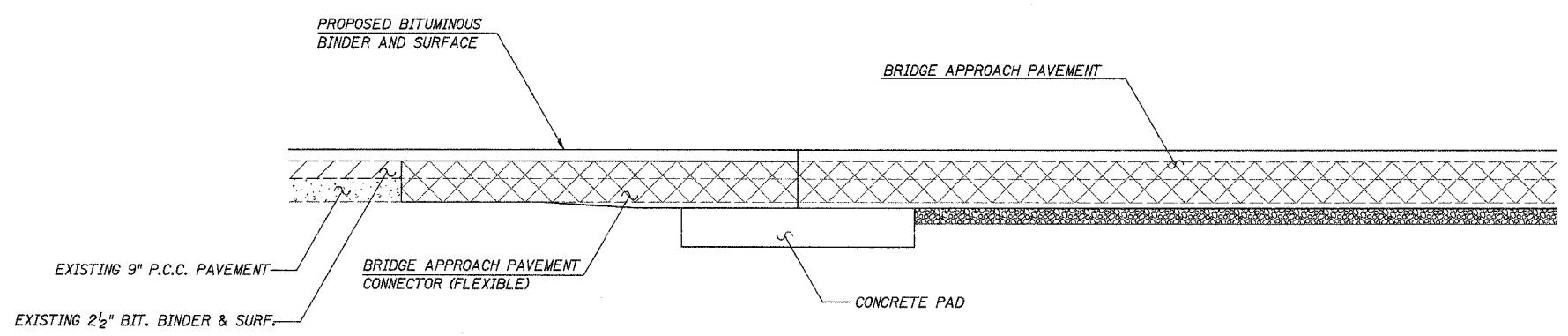
CONTRACT NO. 76389

TABLE OF OFFSETS		
BRIDGE APPROACH PAVEMENT		
NO.	STA.	OFFSET *
1		SEE CONNECTORS
2	486+53.26	19.17 LT
3	486+82.87	19.51 LT
4		SEE CONNECTORS
5	486+51.12	19.17 RT
6	486+81.61	18.81 RT
7	487+67.13	19.51 LT
8	487+96.74	19.17 LT
9		SEE CONNECTORS
10	487+68.39	18.81 RT
11	487+98.88	19.17 RT
12		SEE CONNECTORS
CONNECTOR PAVEMENT		
NO.	STA.	OFFSET
1	486+42.00	18.5 LT
4	486+42.00	18.5 RT
9	488+04.94	18.5 LT
12	488+04.94	18.5 RT

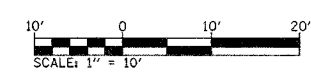
\* OFFSETS REFER TO THE DISTANCE FROM @ TO THE BACK OF CURB.



PLAN



SECTION THROUGH APPROACH



NOTE: SEE STANDARD 420401 FOR DETAILS NOT SHOWN.

PROPOSED BRIDGE APPROACH PAVEMENT SHALL BE GROOVED AS SPECIFIED IN SECTION 503 OF THE STANDARD SPECIFICATIONS.

BRIDGE DECK GROOVING      228 SQ YD

**BRIDGE APPROACH PAVEMENT DETAILS**

FAP ROUTE 42 (IL 127)  
SECTION 2BR  
ILLINOIS DEPT. OF TRANSPORTATION  
DISTRICT 8  
WASHINGTON COUNTY

CUMMINS ENGINEERING CORPORATION	JOB #: 2158
	FILE: APPRPVT
	DATE: 3/17/05

DATE	BY

PLAN