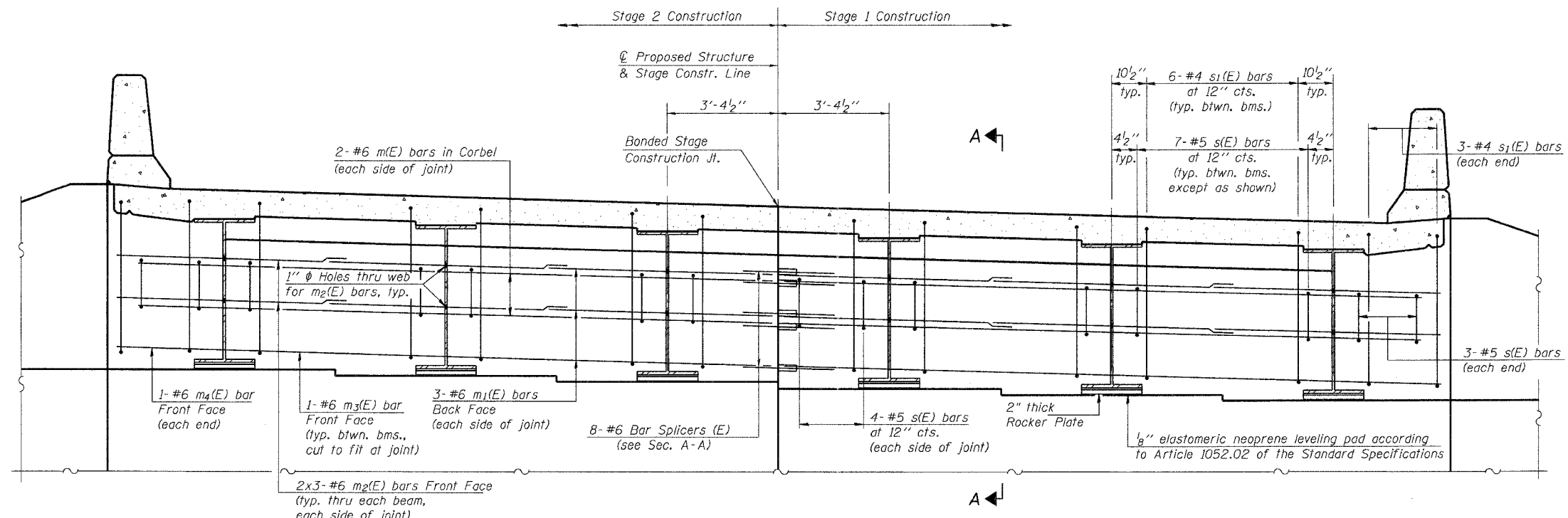


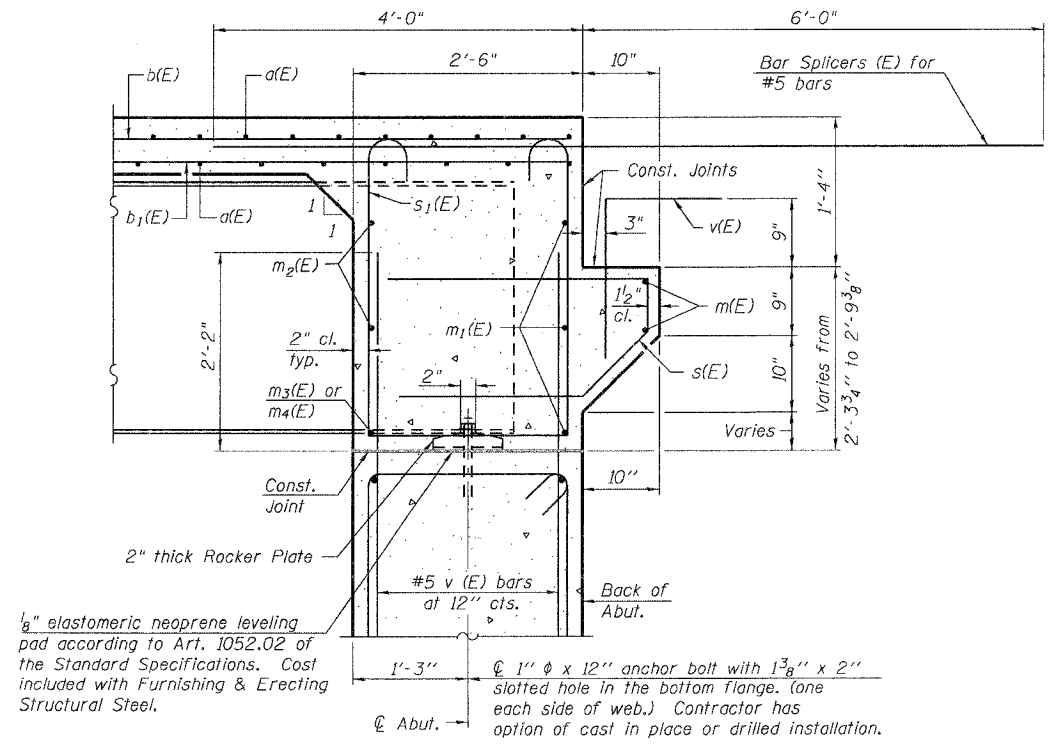
ROUTE NO.	SECTION	COUNTY	TOTAL SHEETS	SHEET NO.
F.A.P. 42	2BR	WASHINGTON	33	22
FED. ROAD DIST. NO. 8	ILLINOIS	PROJECT		
Sheet 8 of 16			CONTRACT #76389	



**DIAPHRAGM ELEVATION AT SOUTH ABUTMENT**  
(Looking South)  
(North Abutment Similar)

**Notes:**  
Reinforcement bars in diaphragm are billed with superstructure on sheet 7 of 16.  
Concrete in diaphragm is included with Concrete Superstructure on sheet 7 of 16.  
For details of bars s(E) & s<sub>1</sub>(E) see sheet 7 of 16.  
The s(E) and s<sub>1</sub>(E) bars shall be placed parallel to the beams. Spacing for these bars shall be at right angles to the beams.  
For anchor bolt details see sheet 14 of 16.  
Bars indicated thus 2x3 - #6 etc. indicates 2 lines of bars with 3 lengths per line.

**MIN. BAR LAP**  
#6 bar = 2'-9"



**SECTION A-A**

\*Cost included with Concrete Superstructure.

DESIGNED	Ruben V. Boehler
CHECKED	Tim S. Howard
DRAWN	Nicole L. Darling
CHECKED	Michael D. Cummins

**DIAPHRAGM DETAILS**

IL ROUTE 127 OVER TRIBUTARY TO CROOKED CREEK  
F.A.P. ROUTE 42 SECTION 2BR  
WASHINGTON COUNTY  
STA. 487+25  
S.N. 095-0076

CUMMINS ENGINEERING CORPORATION	JOB #: 2158
	FILE: 2158SUPER
	DATE: 5/30/06