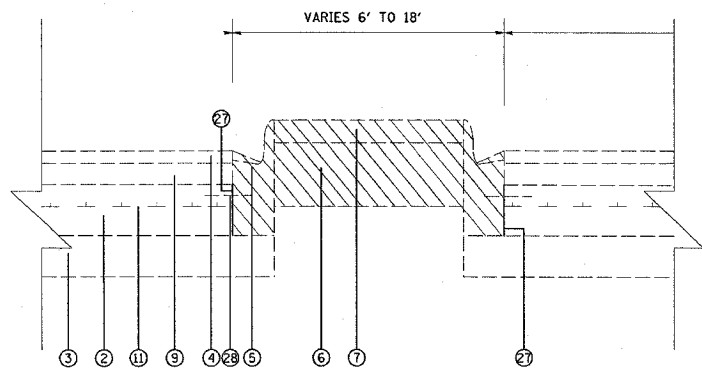
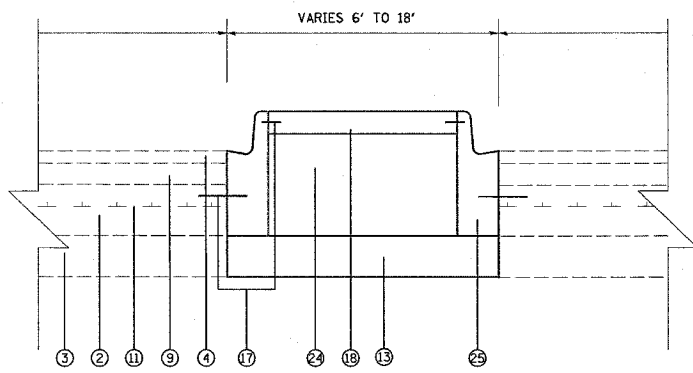


F.A.P. RTE.	SECTION	COUNTY	TOTAL SHEETS	SHEET NO.
805	122-VBR-I	ST. CLAIR	58	5A
STA.		TO STA.		
FED. ROAD DIST. NO.		ILLINOIS FED. AID PROJECT		

DATE	
PLAN	
SURVEYED	
DESIGNED	
CHECKED	
BY	
DATE	
FILE NAME	

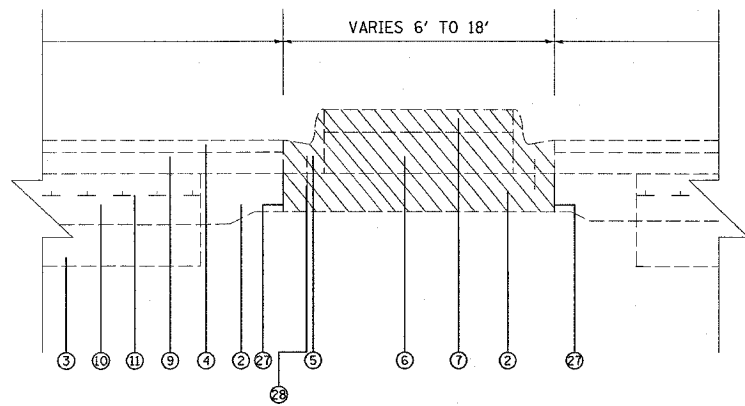


EXISTING TYPICAL
STA. 65+14.95.00 TO STA. 68+68.50

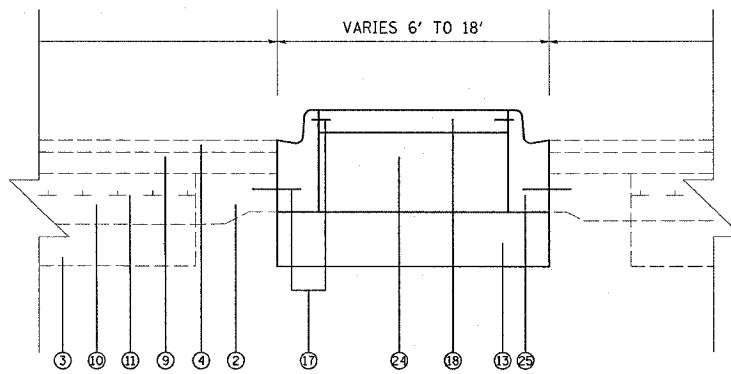


PROPOSED TYPICAL

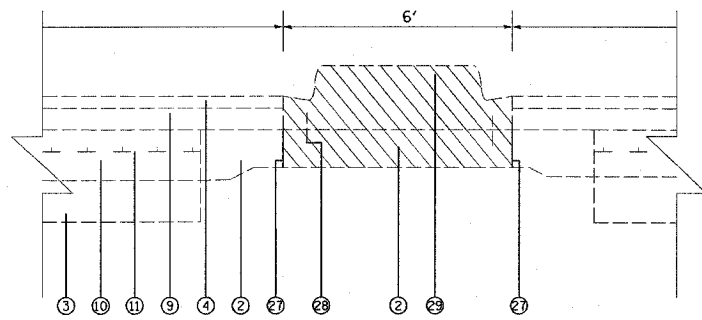
STA. 65+14.95.00 TO STA. 68+68.50



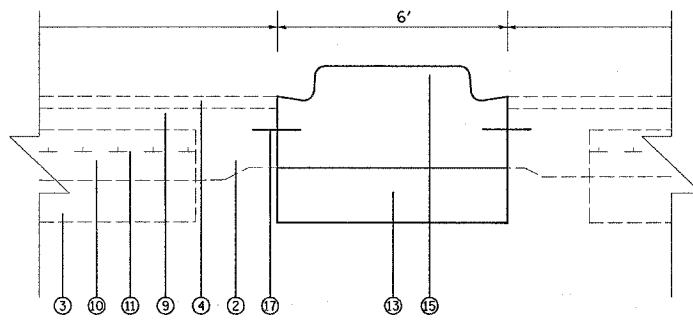
EXISTING TYPICAL
STA. 71+25.08 TO STA. 71+75.08



PROPOSED TYPICAL
STA. 71+25.08 TO STA. 71+75.08



EXISTING TYPICAL
STA. 71+75.08 TO STA. 75+51.67



PROPOSED TYPICAL
STA. 71+75.08 TO STA. 75+51.67

LEGEND

- ① EXISTING COMBINATION CONCRETE CURB AND GUTTER, TYPE B-6.24
 - ② EXISTING PCC PAVEMENT - VARIES 8" TO 10"
 - ③ EXISTING SUB-BASE GRANULAR MATERIAL, TYPE A - 4"
 - ④ EXISTING BITUMINOUS CONCRETE SURFACE COURSE - 1 1/2"
 - ⑤ EXISTING COMBINATION CONCRETE CURB AND GUTTER, TYPE M-6.12/B6.12
 - ⑥ EXISTING COMPACT SAND - 4"
 - ⑦ EXISTING CONCRETE MEDIAN SURFACE - 4"
 - ⑧ EXISTING SIDEWALK - 4"
 - ⑨ EXISTING BITUMINOUS CONCRETE BINDER COURSE - VARIES 1" TO 3 1/2"
 - ⑩ EXISTING PCC BASE COURSE - 8"
 - ⑪ EXISTING PAVEMENT FABRIC
 - ⑫ PROPOSED PCC BASE COURSE - 8"
 - ⑬ PROPOSED SUB-BASE GRANULAR MATERIAL TYPE A - 4"
 - ⑭ PROPOSED POLYMERIZE BITUMINOUS CONCRETE SURFACE COURSE, SUPERPAVE, MIX "E", N90 - 1 1/2"
 - ⑮ PROPOSED CONCRETE MEDIAN SB-6.12*
 - ⑯ PROPOSED BITUMINOUS CONCRETE BINDER COURSE, SUPERPAVE, IL-19.0, N90 - VARIES 1" TO 3 3/4"
 - ⑰ PROPOSED TIE BARS
 - ⑱ PROPOSED CONCRETE MEDIAN SURFACE - 4"***
 - ⑲ PROPOSED CONCRETE SIDEWALK - 4"
 - ⑳ PROPOSED COMBINATION CONCRETE CURB AND GUTTER, TYPE B-6.24
 - ㉑ PROPOSED BITUMINOUS SURFACE REMOVAL - 2 1/2"
 - ㉒ PROPOSED TEMPORARY SIDEWALK - 4"***
 - ㉓ PROPOSED PAVEMENT FABRIC
 - ㉔ PROPOSED COMPACT SAND FILL
 - ㉕ PROPOSED COMBINATION CONCRETE CURB AND GUTTER, TYPE B-6.12
 - ㉖ PROPOSED PROCESSING LIME STABILIZED SOIL MIXTURE 12"
 - ㉗ PROPOSED SAW CUT
 - ㉘ EXISTING TIE BARS
 - ㉙ EXISTING CONCRETE MEDIAN SB-6.12
- REMOVAL

8/10/15 8:46
10/19/2006
c:\projects\122vbr\plan\plan017.adgn
REF-

REVISIONS	
NAME	DATE

ILLINOIS DEPARTMENT OF TRANSPORTATION
**EXISTING AND PROPOSED
ROADWAY TYPICALS ROADWAY**
FAP ROUTE 805 (IL 161)
SECTION 122 VBR-I
ST. CLAIR COUNTY

DRAWN BY:

PLOT DATE: 10/19/2006