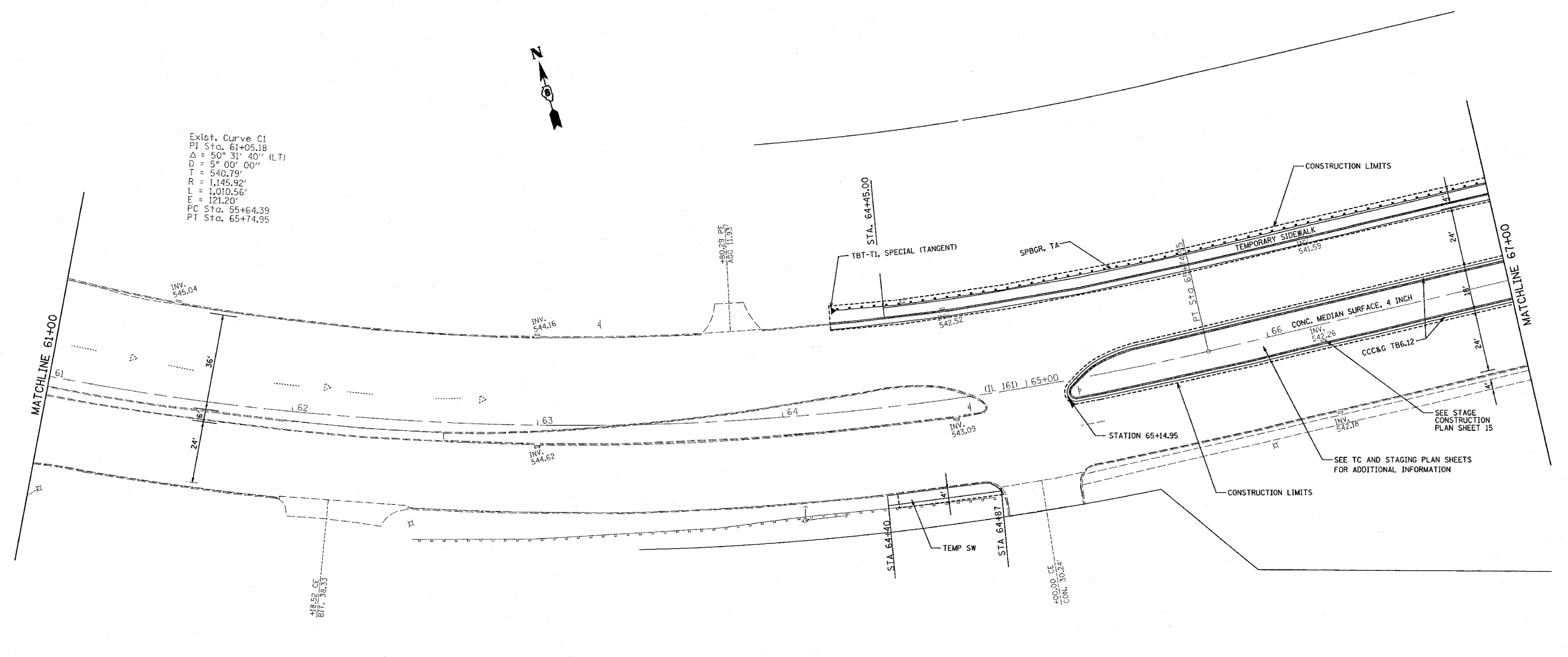


FAP ROUTE	SECTION	COUNTY	TOTAL SHEETS	SHEET NO
805	122-VBR-1	ST. CLAIR	58	8
STA.	61+00.00	TO STA.	67+00.00	
CONTRACT NO:		76558		

PLAN	DATE
REPORTED	BY
ALIGNED	CHECKED
NOTE BOOK	CARD FILE NAME
NO.	

Exist. Curve C1
 PI Sta. 61+05.18
 $\Delta = 50^\circ 31' 40''$ (LT)
 $D = 5^\circ 00' 00''$
 $T = 540.79'$
 $R = 1,145.92'$
 $L = 1,010.56'$
 $E = 121.20'$
 PC Sta. 55+64.39
 PT Sta. 65+74.95



*NOTE:
 TEMPORARY SIDEWALK WILL BE REMOVED IN STAGE 2A.



REVISIONS	
NAME	DATE

ILLINOIS DEPARTMENT OF TRANSPORTATION
PLAN VIEW
 FAP ROUTE 805 (IL161)
 SECTION 122VBR-I
 ST. CLAIR COUNTY
 DRAWN BY:
 PLOT DATE: 10/19/2006

8/10/2006
 C:\p\projects\122vbr\plan\122vbr1.dgn
 REF: 122vbr1.dwg
 REF: 122vbr1.dwg