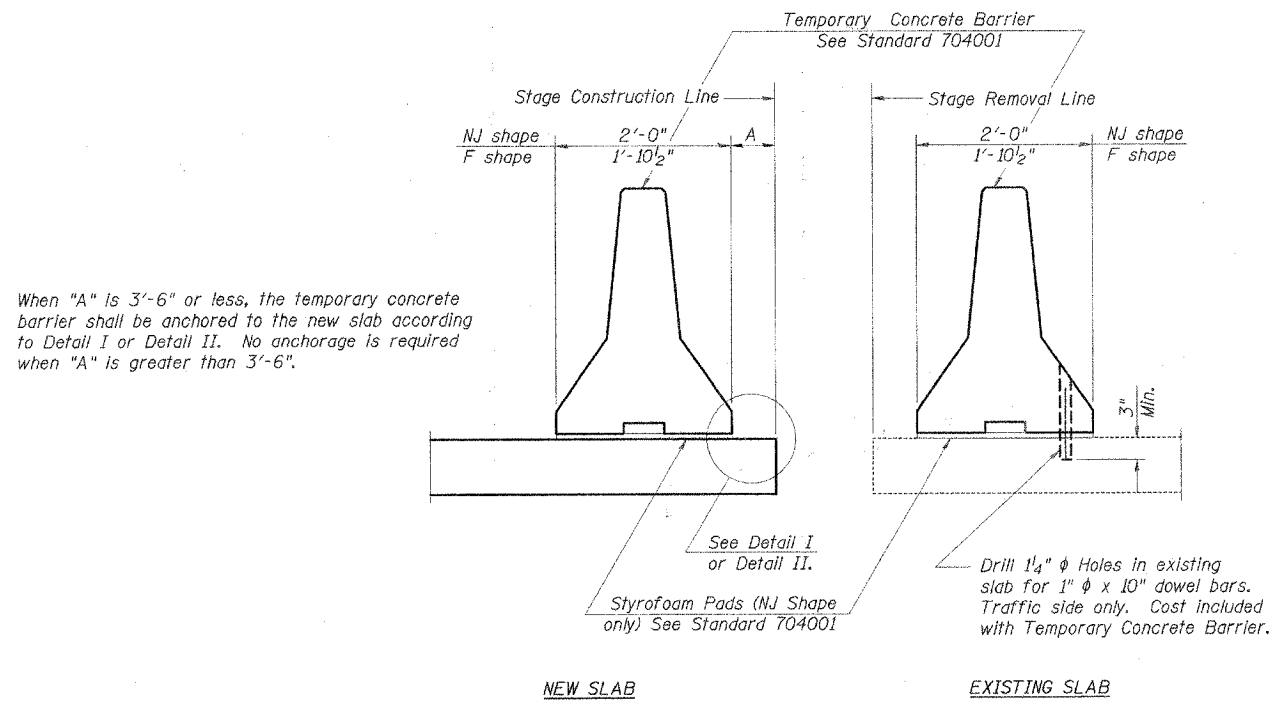


F.A.P. RTE.	SECTION	COUNTY	TOTAL SHEETS	SHEET NO.
805	122VBR-1	ST. CLAIR	58	29
STA.	N/A	TO STA.	N/A	
FED. ROAD DIST. NO. 7 ILLINOIS		FED. AID PROJECT		
Contract #76558		SHEET 4 OF 26		

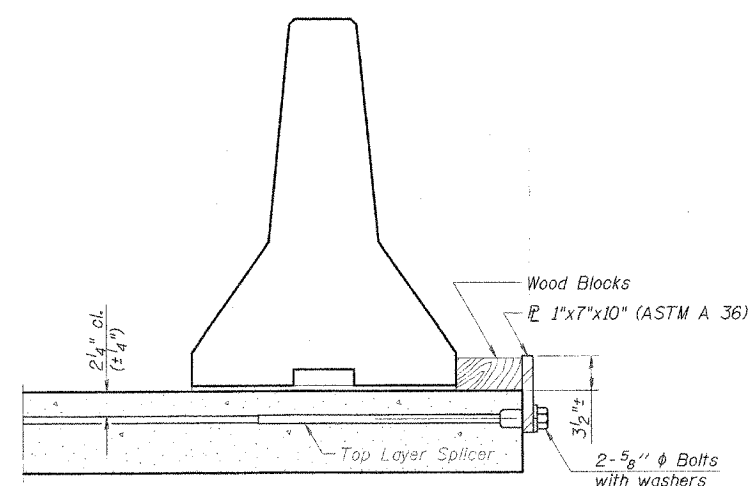


NOTES

Detail I - With Bar Splicer or Couplers:
Connect one (1) 1"x7"x10" steel \bar{P} to the top layer of couplers with 2-5/8" ϕ bolts screwed to coupler at approximate \bar{C} of each barrier panel.

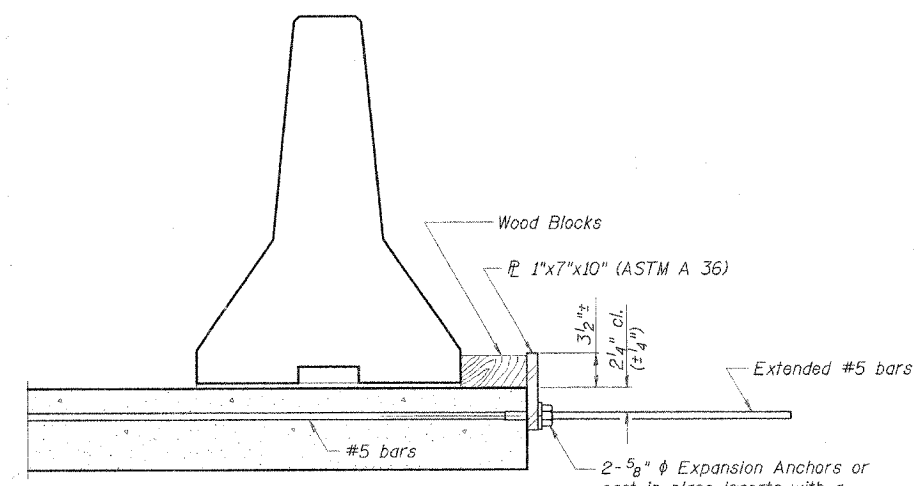
Detail II - With Extended Reinforcement Bars:
Connect one (1) 1"x7"x10" steel \bar{P} to the concrete slab with 2-5/8" ϕ Expansion Anchors or cast in place inserts spaced between the top layer of reinforcement at approximate \bar{C} of each barrier panel.

Cost of anchorage is included with Temporary Concrete Barrier.



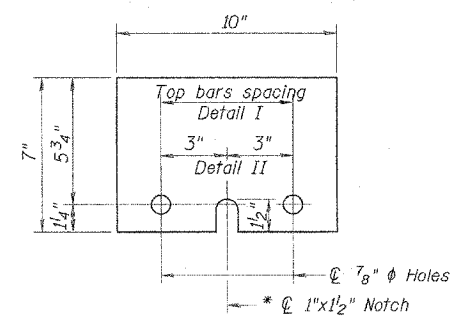
DETAIL I

The 1"x7"x10" Plate shall not be removed until Stage II Construction forms and reinforcement bars are in place.



DETAIL II

The 1"x7"x10" Plate shall not be removed until Stage II Construction forms and all reinforcement bars are in place and the concrete is ready to be placed.



\bar{P} 1"x7"x10"

* Required only with Detail II

REVISIONS	
NAME	DATE

ILLINOIS DEPARTMENT OF TRANSPORTATION
TEMPORARY CONCRETE BARRIER
 F.A.P. ROUTE 805
 SECTION 122VBR-1
 ST. CLAIR COUNTY
 ILLINOIS ROUTE 161 OVER METRO-LINK
 STATION 69+96.56 S.N. 082-0091
 SCALE: NONE DRAWN BY: GLD
 DATE: 7/03/06 CHECKED BY: GBR



L:\1017\04066\A\work\10-der-5\DRAW\Sheets\REVISED DWS\STAGING CHANGE TEMP. CONC. BARR.DWG 6/20/2006