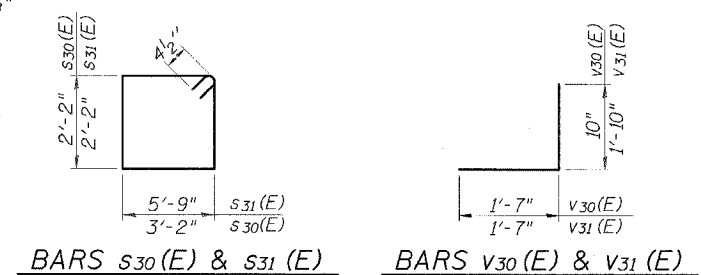
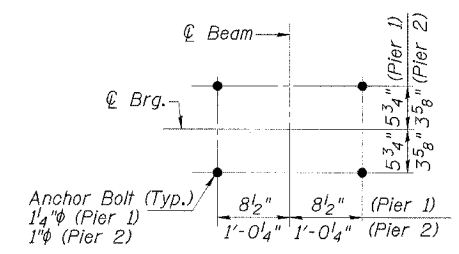
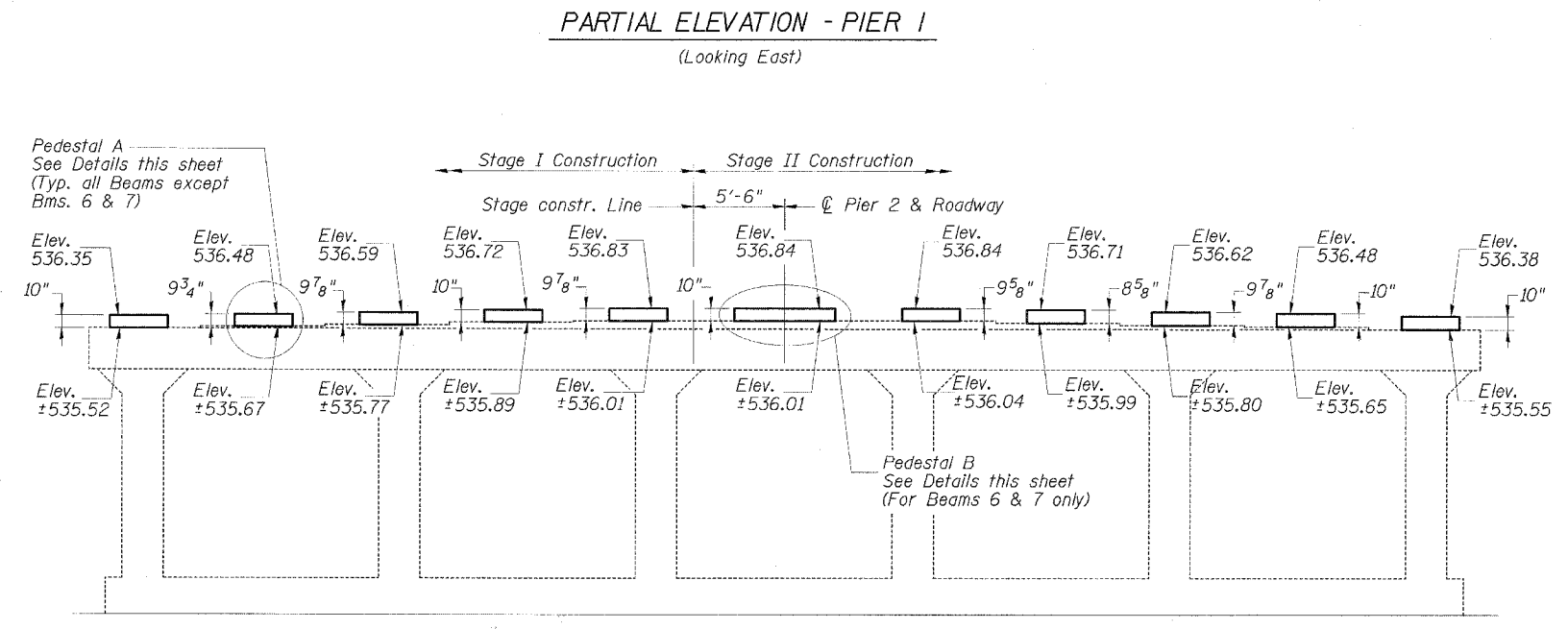
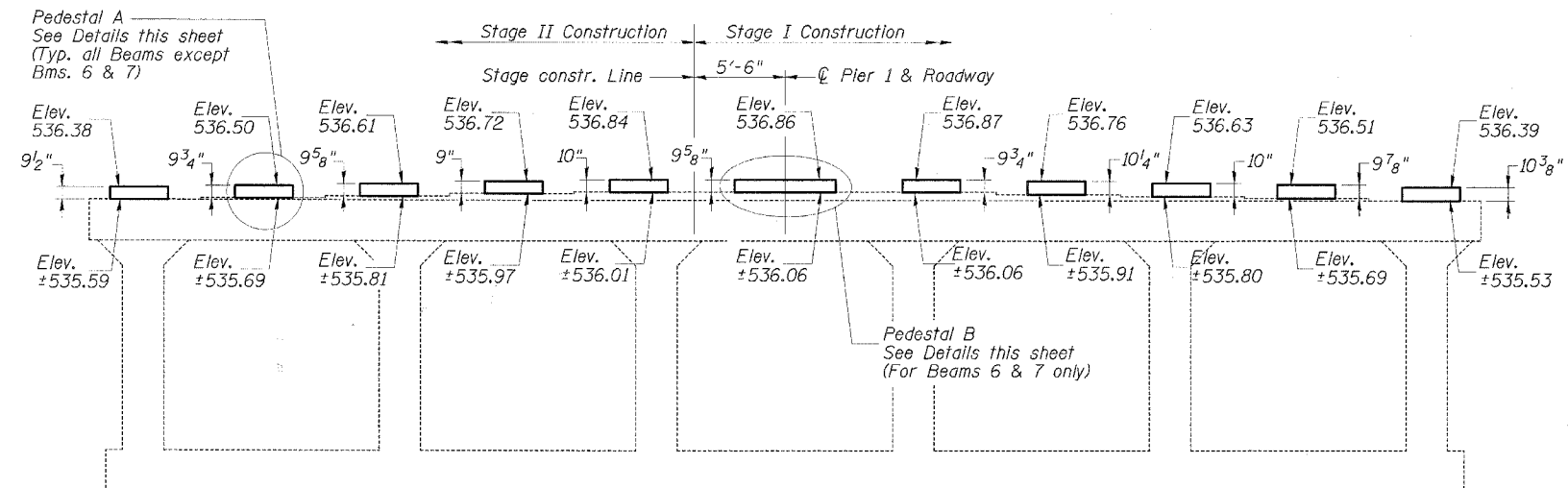


\*Bars shall be epoxy grouted into 7/8" holes, 1'-0" min. depth according to Section 584 of the Standard Specifications.



**BILL OF MATERIAL - TWO PIERS**

Bar	No.	Size	Length	Shape
h30(E)	60	#5	3'-2"	—
h31(E)	6	#5	5'-9"	—
s30(E)	40	#4	11'-5"	□
s31(E)	4	#4	16'-7"	□
v30(E)	132	#5	2'-5"	—
v31(E)	140	#5	3'-5"	—
Concrete Structures		Cu. Yd.	6.2	
Reinforcement Bars, Epoxy Coated		Pound	1420	

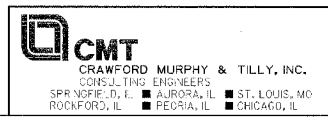
Reinforcement bars designated (E) shall be epoxy coated.

**NOTES**

- For anchor bolt installation see sheet 18 of 26.
- Reinforcement in pedestals shall be placed to miss anchor bolts.
- Reinforcement bars designated (E) shall be epoxy coated.
- Diaphragm removal & reinstallation may be required to facilitate drilling holes. Cost shall be included in the cost of "Furnishing & Erecting Structural Steel".

REVISIONS	
NAME	DATE

ILLINOIS DEPARTMENT OF TRANSPORTATION  
**PIER DETAILS**  
 F.A.P. ROUTE 805  
 SECTION 122VBR-1  
 ST. CLAIR COUNTY  
 ILLINOIS ROUTE 161 OVER METRO-LINK  
 STATION 69+96.56 S.N. 082-0091  
 SCALE: NONE DRAWN BY: GLD  
 DATE: 7/03/06 CHECKED BY: GBR



I:\DOT\0406610\work\0406610\STREET\REVISED DGN'S STAGING CHANGE\PIER DETAILS.REV.LGN 8/23/2006