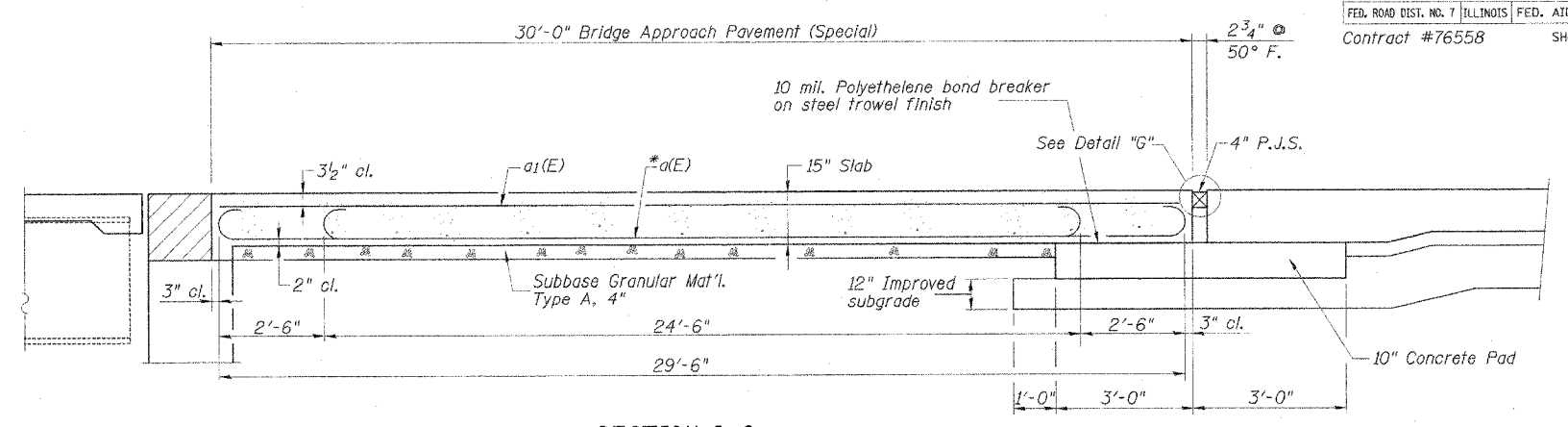
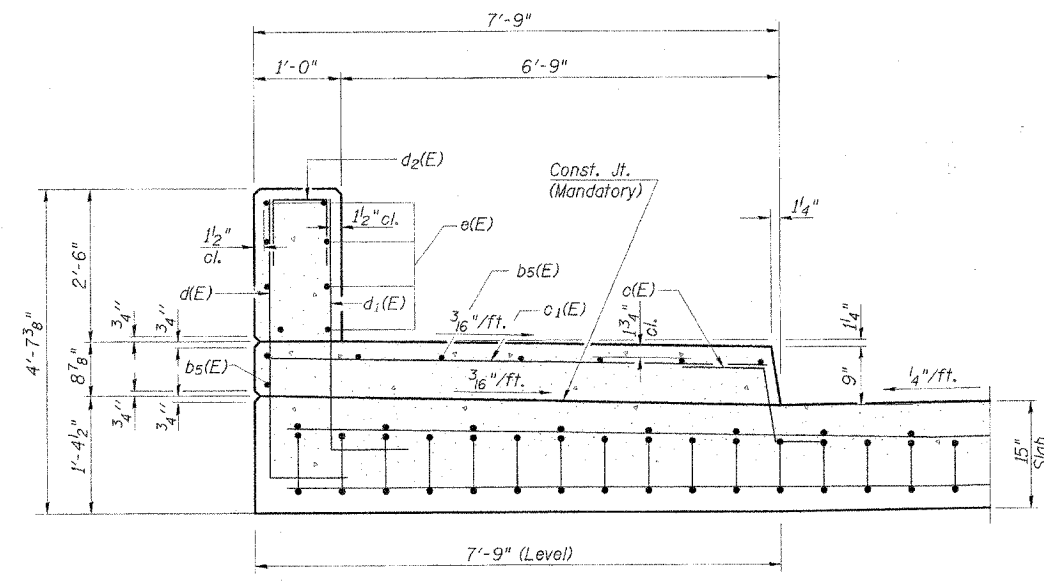


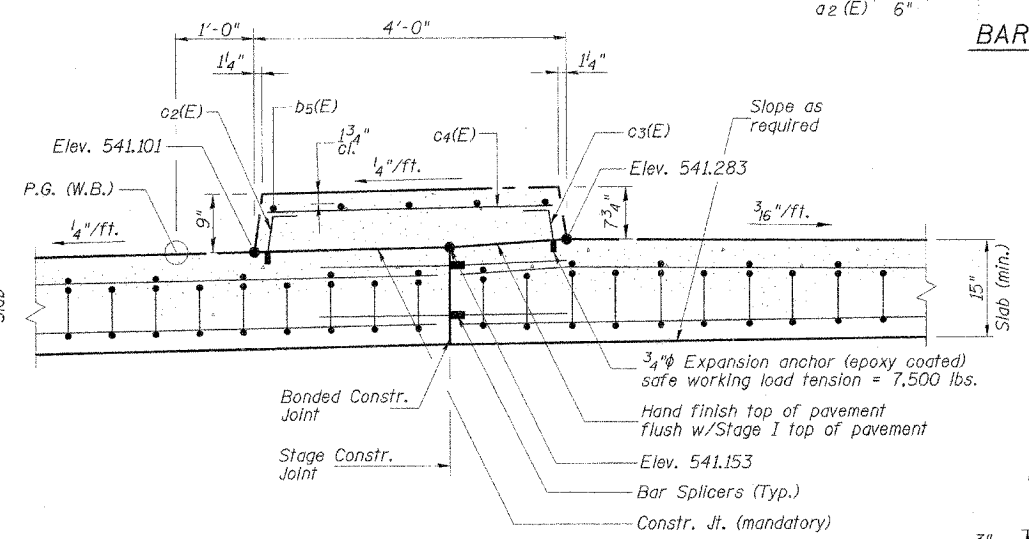
**INSIDE ELEVATION - SOUTH PARAPET**  
(Looking South - North Parapet similar)



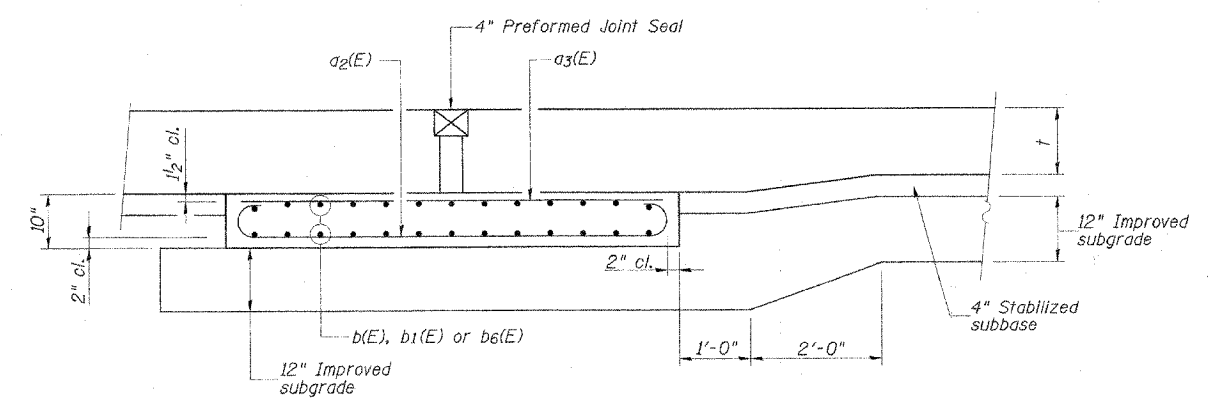
**SECTION C-C**  
\*Stagger a(E) Bars as shown on plan full width



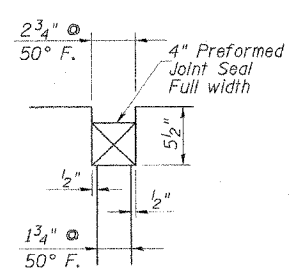
**SECTION THRU SIDEWALK**



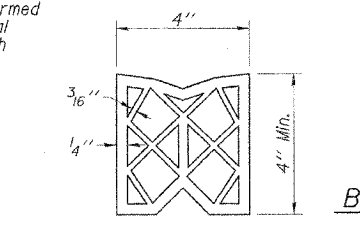
**DETAIL 'E' SECTION THRU RAISED MEDIAN**



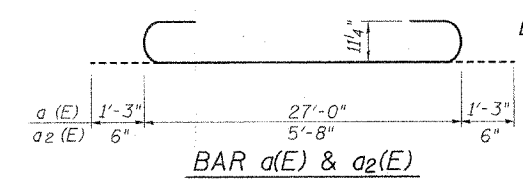
**SECTION D-D - RIGID PAVEMENT**



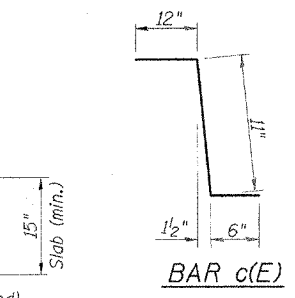
**DETAIL G**



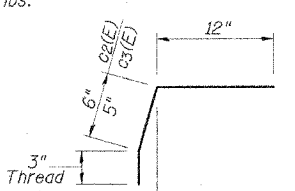
**PREFORMED JOINT SEAL**



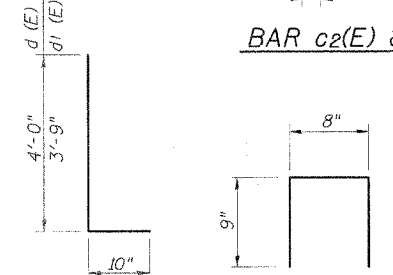
**BAR a(E) & a2(E)**



**BAR c(E)**



**BAR c2(E) & c3(E)**



**BAR d(E) & d1(E) BAR d2(E)**

**BILL OF MATERIAL - TWO APPROACHS BRIDGE APPROACH PAVEMENT (SPECIAL)**

Bar	No.	Size	Length	Shape
a (E)	348	#9	29'-6"	U
a1 (E)	174	#5	29'-6"	—
a2 (E)	174	#4	6'-8"	U
a3 (E)	174	#4	5'-8"	—
b (E)	114	#5	17'-6"	—
b1 (E)	114	#5	33'-6"	—
b2 (E)	32	#4	24'-10"	—
b3 (E)	16	#4	37'-0"	—
b4 (E)	62	#5	37'-0"	—
b5 (E)	50	#5	30'-8"	—
b6 (E)	52	#5	37'-9"	—
c (E)	128	#5	2'-5"	L
c1 (E)	128	#5	7'-5"	—
c2 (E)	64	#5	1'-9"	L
c3 (E)	64	#5	1'-8"	L
c4 (E)	64	#5	3'-3"	—
d (E)	128	#4	4'-10"	L
d1 (E)	128	#6	4'-7"	L
d2 (E)	32	#4	2'-2"	L
d3 (E)	24	#6	4'-0"	—
d4 (E)	24	#4	4'-0"	—
e (E)	32	#4	30'-8"	—
e1 (E)	24	#4	5'-8"	—
Bridge Approach Pavement (Special)			Sq. Yd.	570

Reinforcement bars designated (E) shall be epoxy coated.

REVISIONS	DATE
NAME	

ILLINOIS DEPARTMENT OF TRANSPORTATION  
**BRIDGE APPROACH PAVEMENT (SPECIAL)**  
 SECTIONS AND DETAILS  
 F.A.P. ROUTE 805  
 SECTION 122VBR-1  
 ST. CLAIR COUNTY  
 ILLINOIS ROUTE 161 OVER METRO-LINK  
 SCALE: NONE DRAWN BY: GLD  
 DATE: 7/03/06 CHECKED BY: GBR

**CMT**  
 CRAWFORD MURPHY & TILLY, INC.  
 CONSULTING ENGINEERS  
 SPRINGFIELD, IL ■ BURLINGAME, CA ■ ST. LOUIS, MO  
 ROCKFORD, IL ■ PEORIA, IL ■ CHICAGO, IL

I:\DOT\04C6610\Wor\Kor\04r-5\DRAW\Sheet\REVISED DOW'S STAGING CHANGE\BRIDGE APPR PLAN 2 REV.dgn  
 7/3/2006