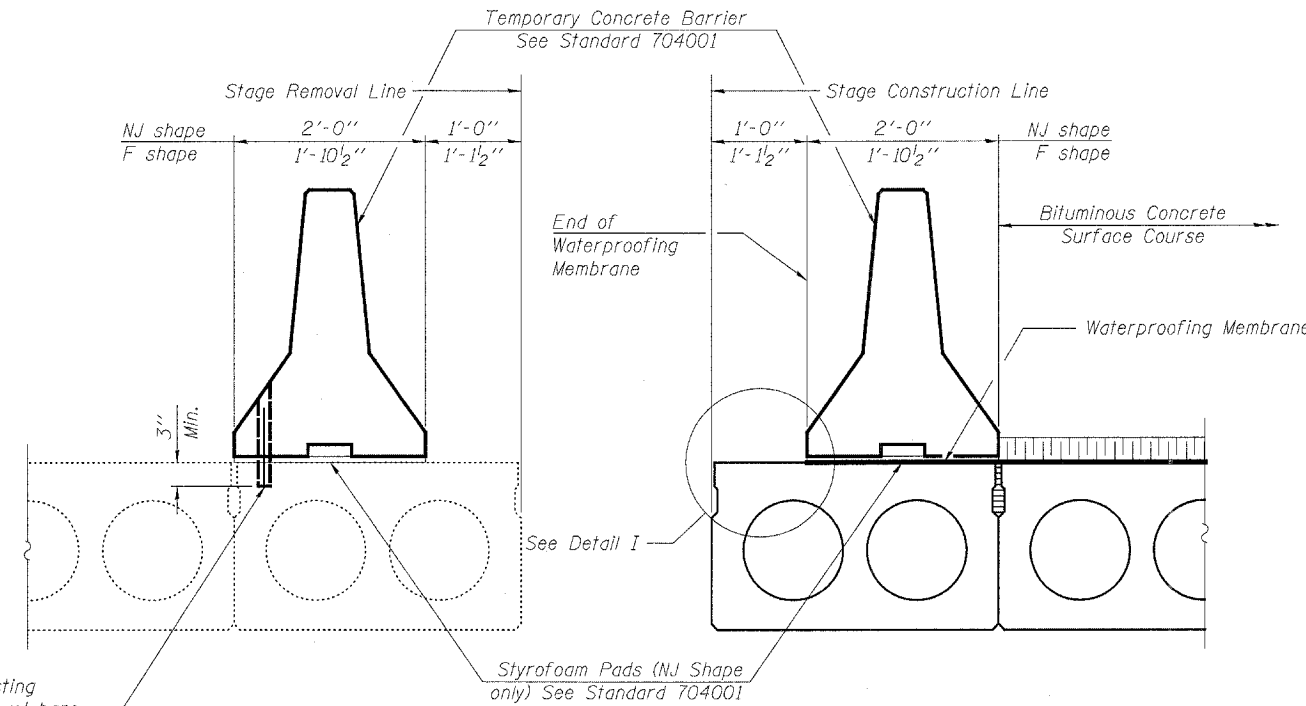


STATE OF ILLINOIS
DEPARTMENT OF TRANSPORTATION

ROUTE NO.	SECTION	COUNTY	TOTAL SHEETS	SHEET NO.	SHEET NO. 3
F.A.P. 329	126BR-1	RANDOLPH	27	17	10 SHEETS
FED. ROAD DIST. NO. 7	ILLINOIS	FED. AID PROJECT			

Contract #76898

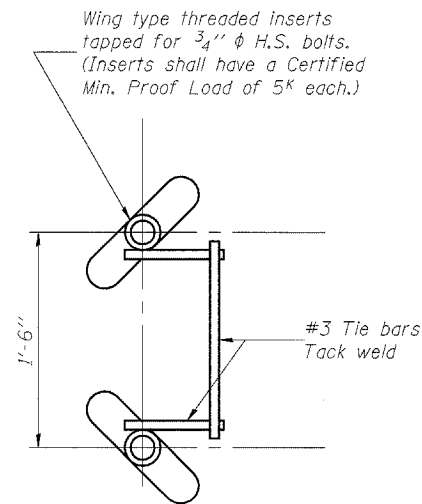


Drill 1/4" ϕ Holes in existing beam for 1" ϕ x 10" dowel bars. Traffic side only. Cost included with Temporary Concrete Barrier.

EXISTING PPC DECK BEAMS

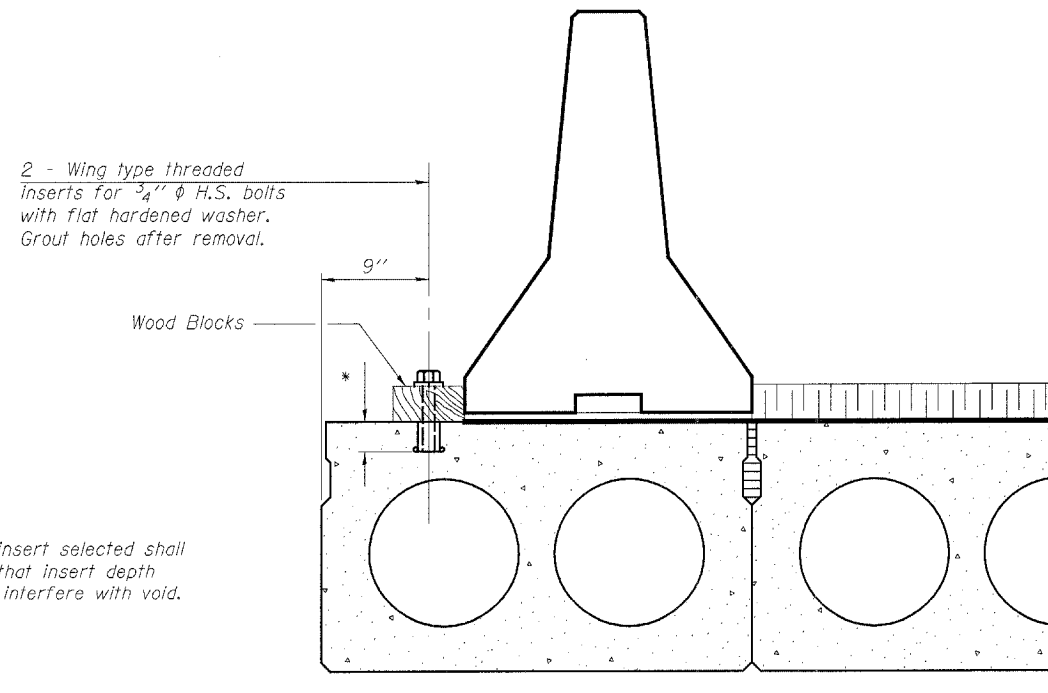
NEW PPC DECK BEAMS

SECTIONS THRU PPC DECK BEAMS



INSERT DETAIL

*Type of insert selected shall be such that insert depth does not interfere with void.



DETAIL I

The Temporary Concrete Barrier and wood blocks shall not be removed until Stage III Construction PPC Deck Beams have been placed and shear keys grouted.

NOTES

- The 3/4" ϕ high strength bolts used to connect the wood blocks shall be tightened to a snug fit without crushing the wood block.
- The wing type threaded insert assembly shall be spaced 6'-0" longitudinally.
- The Waterproofing Membrane shall extend under the Temporary Concrete Barrier without the asphalt sand seal protection layer. Once the Temporary Concrete Barrier has been removed, and the penetrating primer, coal tar emulsion and fiberglass fabric, and coal tar emulsion slurry layers of the Waterproofing Membrane is lapped 6", the asphalt sand seal protection layer shall be applied according to Article 581 of the Standard Specifications.
- The cost for H.S. bolts, flat headed washers, and wood block is included with Temporary Concrete Barrier.
- The cost for wing type threaded inserts is included with Precast Prestressed Concrete Deck Beams (21" Depth).

DESIGNED	NJM
CHECKED	EML
DRAWN	NJM
CHECKED	EML

HORNER & SHIFRIN, INC.
ENGINEERS ■ ARCHITECTS ■ PLANNERS

TEMPORARY CONCRETE BARRIER
FOR STAGE CONSTRUCTION
F.A.P. ROUTE 329 - SECTION 126BR-1
RANDOLPH COUNTY
STATION 718+90.00
STRUCTURE NO. 079-0016