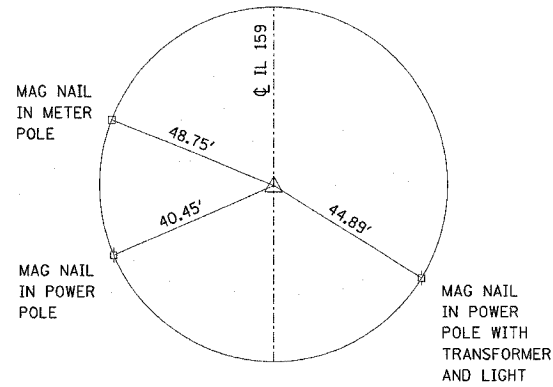
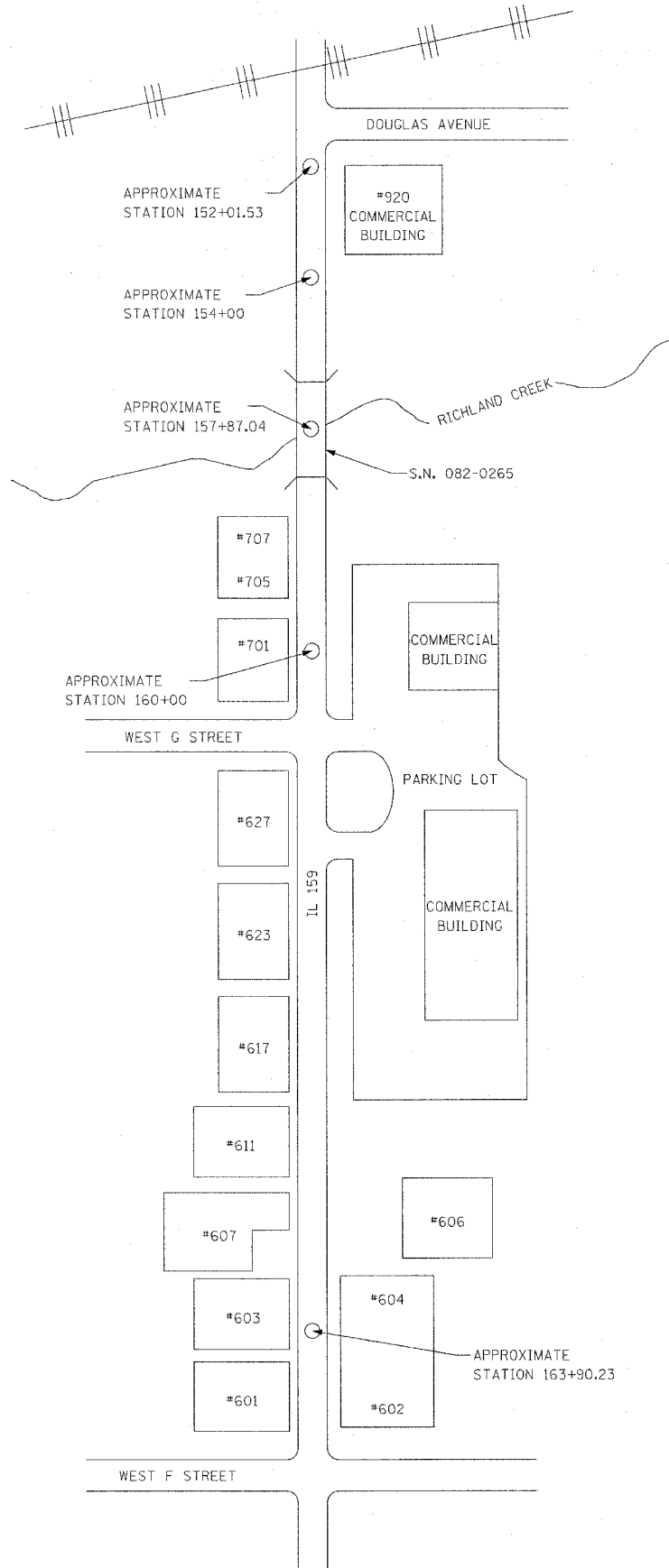
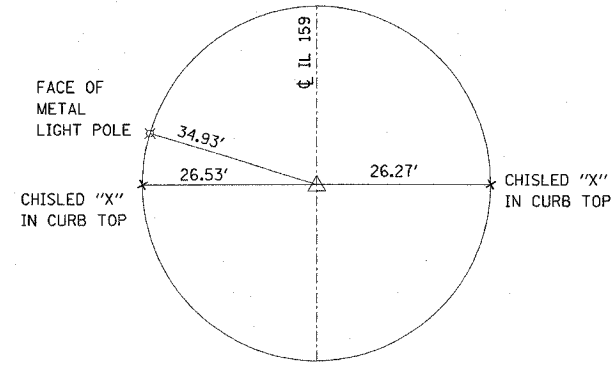


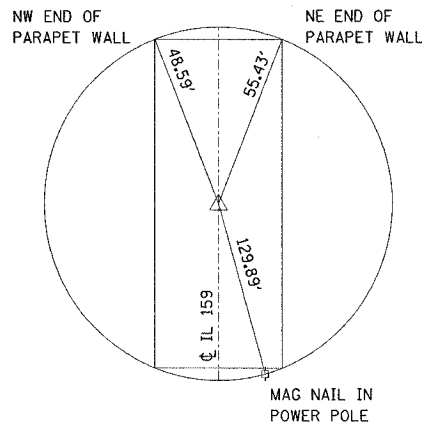
F.A.P. RTE.	SECTION	COUNTY	TOTAL SHEETS	SHEET NO.
600	1-1BR-1	ST. CLAIR	29	6
STA. 600		TO STA.		
FED. ROAD DIST. NO.		ILLINOIS FED. AID PROJECT		



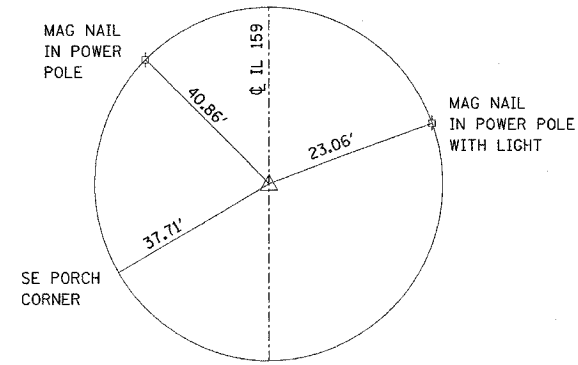
TIE POINT
MAG NAIL
STA. 152+01.53



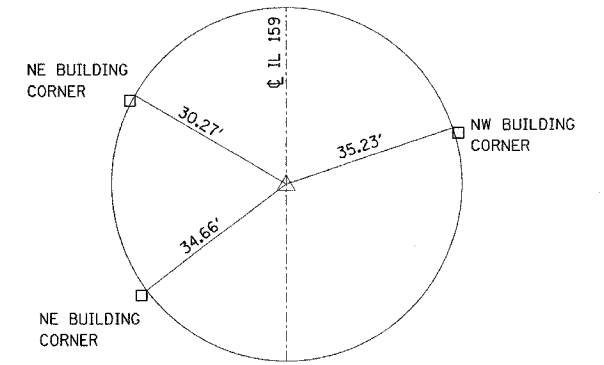
TIE POINT
MAG NAIL
STA. 154+00



TIE POINT
MAG NAIL
STA. 157+87.04



TIE POINT
MAG NAIL
STA. 160+00



TIE POINT
MAG NAIL
STA. 163+90.23

TEMPORARY BENCHMARKS

- TBM-1 - A CHISELED "□" ON SW CORNER OF CONCRETE TRAFFIC SIGNAL CONTROL HANDHOLE ON NE CORNER OF IL 159 & EAST "F" STREET
ELEV = 514.841
- TBM-2 - "X" CUT ON WNW TOP FLANGE BOLT OF FIRE HYDRANT ON E SIDE OF IL 159 APPROX. 90' SOUTH OF SN 082-0265
ELEV = 505.181
- TBM-3 - A CHISELED "□" ON SE CORNER OF CONCRETE FOUNDATION FOR 5' TALL METAL CONTROLLER BOX ON SW CORNER OF INTERSECTION OF RAILROAD TRACKS & IL 159 ACROSS FROM DOUGLAS AVE.
ELEV = 497.974
- TBM-4 - RR SPIKE IN W SIDE OF POWER POLE ON E SIDE OF IL 159 APPROX. 500' S OF BOUL AVENUE APPROX. 125' N OF BUS STOP SHELTER ON N SIDE OF SWANSEA POLICE STATION
ELEV = 508.170
- TBM-5 - A CHISELED "□" ON SW CORNER OF CONCRETE TRAFFIC SIGNAL HANDHOLE BOX ON S SIDE OF IL 161 APPROX. 150' W OF IL 159 CENTERLINE AND IN MIDDLE OF SIDEWALK.
ELEV = 542.267

BENCHMARK

- BM R-114 - A STANDARD DISK SET IN CONCRETE ON THE NW CORNER OF "A" STREET & 1ST STREET IN BELLEVILLE
ELEV = 521.406

NOTE: ALL MEASUREMENTS ARE PULLED DIRECT

PLOT DATE = #DATE#
FILE NAME = #FILE#
PLOT SCALE = #SCALE#
REFERENCE = #REF#

REVISIONS	
NAME	DATE

ILLINOIS DEPARTMENT OF TRANSPORTATION
TIE POINTS & BENCHMARKS

FAP ROUTE 600
SECTION 1-1BR-1
ST. CLAIR COUNTY

SCALE: VERT. _____
HORIZ. _____

DATE _____

DRAWN BY _____
CHECKED BY _____