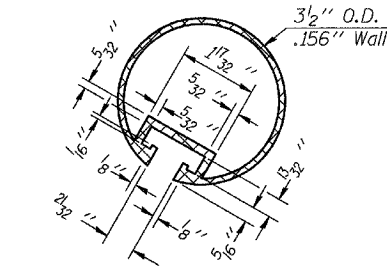


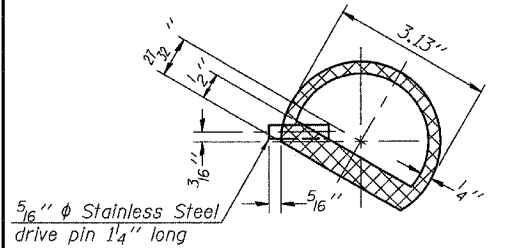
STATE OF ILLINOIS
DEPARTMENT OF TRANSPORTATION

ROUTE NO.	SECTION	COUNTY	TOTAL SHEETS	SHEET NO.	SHEET
FAP 600	1-1BR-1	ST. CLAIR	29	22	13 SHEETS
FED. ROAD DIST. NO. 7	ILLINOIS	FED. AID PROJECT-			

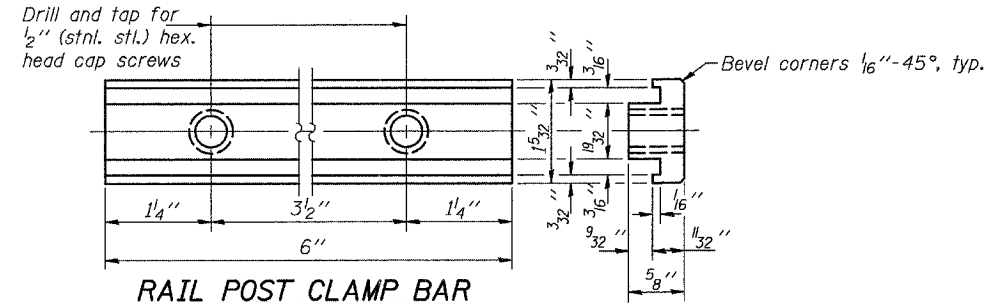
Contract # 76962



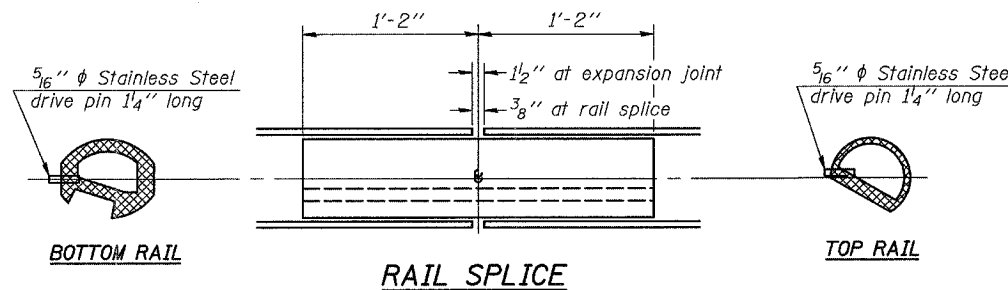
SECTION THRU TOP RAIL



SECTION THRU SPLICE
For Top Rail

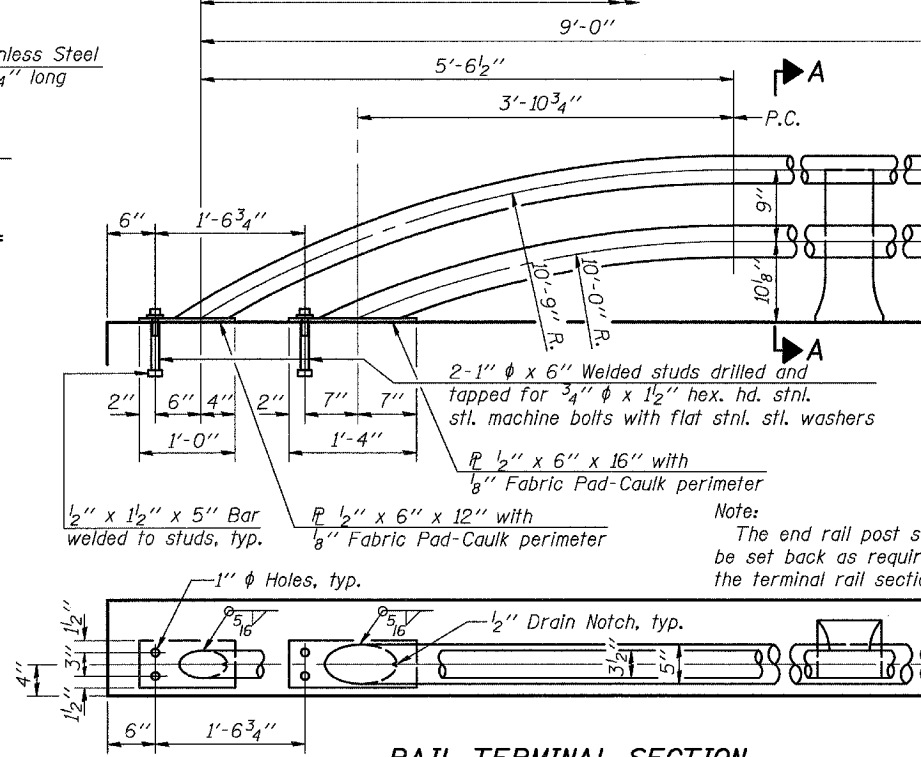


RAIL POST CLAMP BAR
For Top Rail

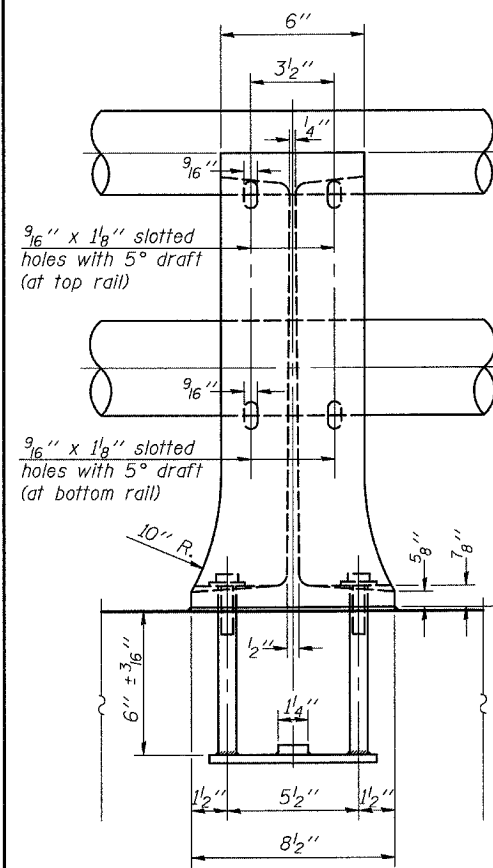


RAIL SPLICE

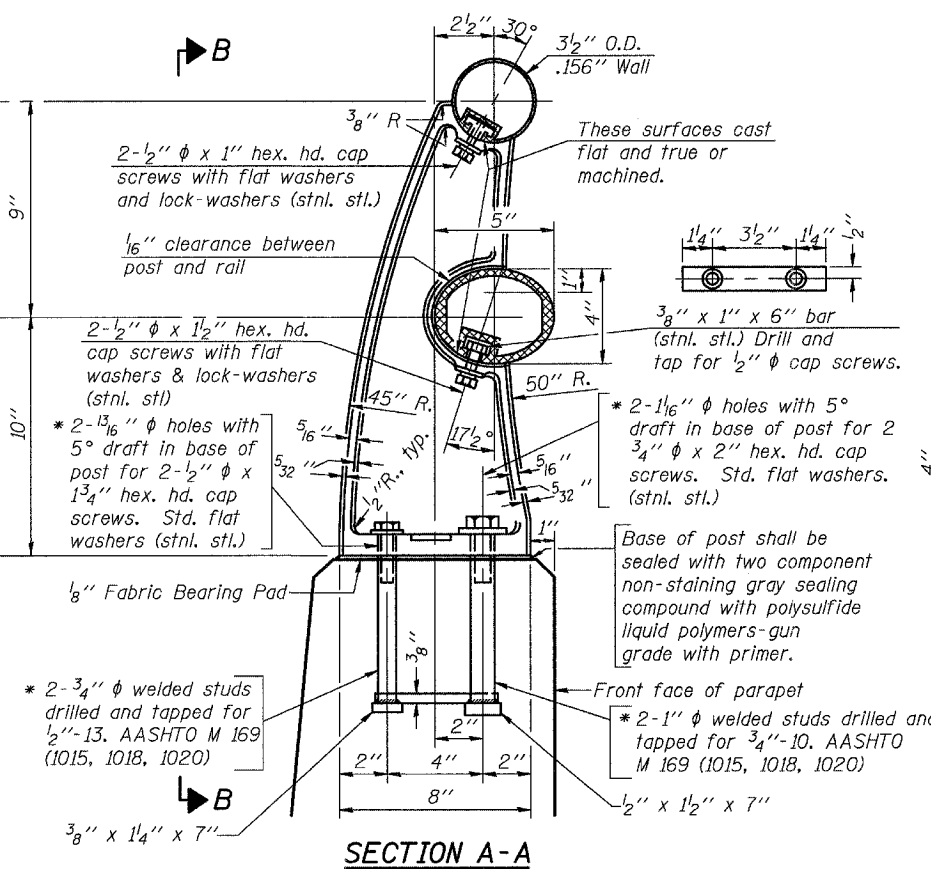
Limits of Payment



RAIL TERMINAL SECTION

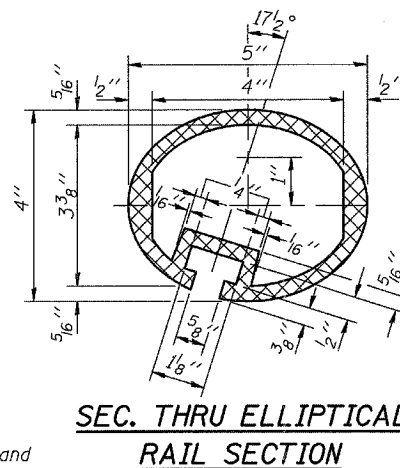


VIEW B-B

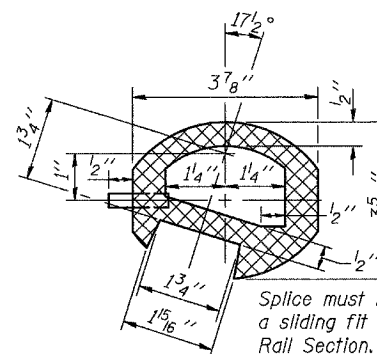


SECTION A-A

RAIL POST DETAILS



SEC. THRU ELLIPTICAL RAIL SECTION



SEC. THRU SPLICE

Notes:

All Posts shall be normal to parapet.
All Aluminum Alloy Extruded Rail shall be supplied in modular lengths of 30 feet, except at the end of bridge or over open joints in bridge where the rail shall be attached to a minimum of 2 posts. If the rail horizontal curve of 2300 foot radius or less, the modular lengths may be reduced but shall be attached to a minimum of 2 posts.
All joints in rail shall be spliced per detail.
Provide 1-1/8" and 2-1/16" Aluminum Shims for 25% of the Posts.
Rail elements shall be parallel to Grade-high spots will be ground and low spots shimmed.
Aluminum alloy rail shall conform to ASTM B 221 alloy 6061-T6 or 6351-T5 with min. yield 35 ksi, min. tensile 38 ksi, and elongation of 10% in 2 inches.
Existing Bridge Handrail shall be removed and re-erected on top of the proposed parapet, and will be paid for at the contract unit price per foot for REMOVING AND RE-ERECTING EXISTING RAILING.

These surfaces cast flat and true or machined.
2-1/2" φ x 1" hex. hd. cap screws with flat washers and lock-washers (stnl. stl.)
1/16" clearance between post and rail
2-1/2" φ x 1 1/2" hex. hd. cap screws with flat washers & lock-washers (stnl. stl.)
* 2-1 1/16" φ holes with 5° draft in base of post for 2-1/2" φ x 1 3/4" hex. hd. cap screws. Std. flat washers (stnl. stl.)
Base of post shall be sealed with two component non-staining gray sealing compound with polysulfide liquid polymers-gun grade with primer.
Front face of parapet
* 2-1" φ welded studs drilled and tapped for 3/4"-10. AASHTO M 169 (1015, 1018, 1020)
* 2-3/4" φ welded studs drilled and tapped for 1/2"-13. AASHTO M 169 (1015, 1018, 1020)

Contractor to provide anchorage of existing bridge rail in accordance with this sheet. All other details are shown for information only.

BILL OF MATERIAL

Item	Unit	Quantity
Removing and Re-Erecting Existing Railing	Foot	248

TYPE L ALUMINUM RAILING
IL ROUTE 159 OVER RICHLAND CREEK
F.A.P. ROUTE 600 - SECTION 1-1BR-1
ST. CLAIR COUNTY
STA. 158+08
STRUCTURE NO. 082-0265