

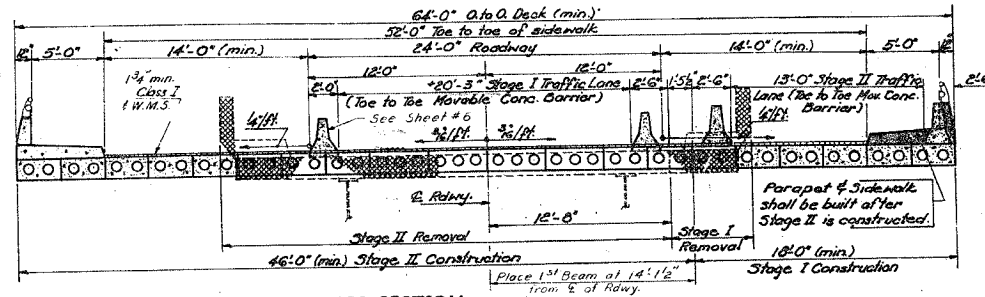
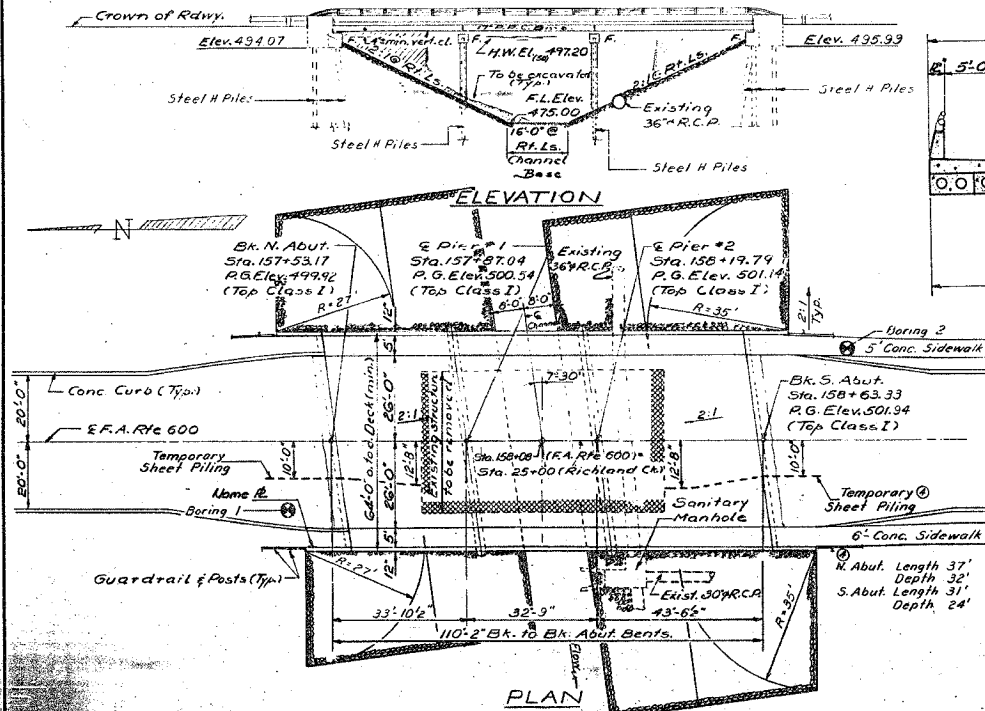
F.A.P. RTE.	SECTION	COUNTY	TOTAL SHEETS	SHEET NO.
600	1-1BR-1	ST. CLAIR	29	28
STA.		TO STA.		
FED. ROAD DIST. NO.		ILLINOIS FED. AID PROJECT		

B.M.: Bronze plug on E. Ill. Rte. 159 at Sta. 148+24.6
Elev. 500.21
Existing structure: No 082-0069, Sta. 158+11.15, built as N. Illinois street over Richland creek in 1923. The existing 61'-10" simple span with builtup I-beams substructure on stone closed abutments shall be removed utilizing Stage Construction as shown in the Plans.

STATE OF ILLINOIS
DEPARTMENT OF TRANSPORTATION

DATE	NO.	BY	REVISION
11/17/78	1	ST. CLAIR	17
11/17/78	2	ST. CLAIR	5

No salvage.

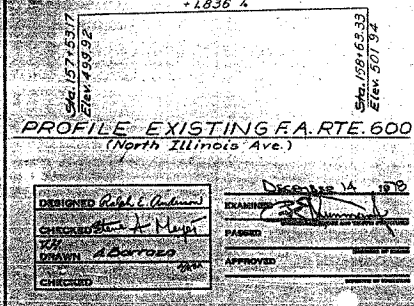


CROSS SECTION
Showing Traffic Lanes during Stage Const.
(Looking South)
Dimensions are at RL Ls to E of Rdwy.

GENERAL NOTES
See Proposal for Boring Data.
It shall be the responsibility of the Contractor to verify all dimensions and conditions existing in the field prior to construction & ordering of materials. The top surface of the beams shall be finished in accordance with Art. 505.06 of the Std. Specifications except that the surface shall not be roughened by brooming. The finished surface shall be free of depressions or high spots with sharp corners.
The concrete rail section above the mandatory const. joint at the top of the sidewalk shall be constructed of Class X Concrete, except the aggregates shall conform to the requirements of Handrail Concrete.
Protective coat shall not be applied to surfaces to which Waterproofing Membrane System is applied.
Layout of riprap slope walls may be varied in the field to suit ground conditions as directed by the Engineer.
All reinforcement bars shall conform to the requirements of AASHTO M31 or M53, Grade 60.
The Contractor shall drive one (1) Steel test pile, HPB x 36 of Pier 1 in a permanent location as directed by the Engineer before ordering the remainder of piles.
The contractor will be held responsible for any damages incurred to the 36" combined sewer through his negligence. Damages incurred during normal construction procedures will be paid for in accordance with Section 109 of the Standard Specifications.
① Steel test pile, HPB x 36 of Pier 1 in a permanent location as directed by the Engineer before ordering the remainder of piles.
② Sidewalk Removal is incidental to the cost of the Removal of Existing Structures.
③ See Special Provisions.

TOTAL BILL OF MATERIAL

Item	Quantity	Unit	Total
Waterproofing Membrane System	623	Sq. Yds.	623
PC Mortar Fdring Course	2,049	Lin. Ft.	2,049
Protective Coat	212	Sq. Yds.	212
Class X Concrete	624	Cu. Yds.	3,581
RPC Deck Beams (17")	6,570	Sq. Ft.	23,450
Reinforcement Bars	624	Lbs.	5,851
Structure Excavation	1,950	Sq. Ft.	1,950
Temporary Sheet Piling	63	Tons	63
Bituminous Concrete Surface Course Class I	1	Tons	1
Name Plates	1	Each	1
Stone Rip Rap	1,524	Sq. Yds.	1,524
Aluminum Walling Type L	248	Lin. Ft.	248
Movable Double Concrete Barrier	220	Lin. Ft.	220
Removal of Existing Structures Eq.	1,660	Cu. Yds.	1,660
Channel Excavation	1,424	Lin. Ft.	1,424
Steel Piles HPB x 36	17	Each	17
Test Piles Steel HPB x 36	1	Each	1
Setting Piles in Rock	43	Each	43
Pavement Replacement	166	Sq. Yds.	166
Pavement Removal	166	Sq. Yds.	166



STATION 158+08.00
BUILT 197 BY
STATE OF ILLINOIS
F.A. RTE. 600, SEC. 110
F.A. PROJECT # 60011
LOADING HS 20
STR. No. 0

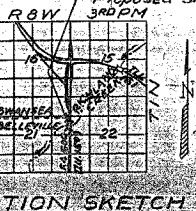
NAME PLATE
See Std. E113

WATERWAY INFORMATION
Drainage area 16.36 M.
Existing opening 680 Sq. Ft.
Required opening 270 Sq. Ft.
Proposed opening 1270 Sq. Ft. (below 50 yr. HW2)
High Water El. (50 yr.) = 497.20 = (100 yr.) = 495.70
Q (50) = 3300 CFS = (100 yr.) = 2180 CFS
Created Head = 0.7' - Created Head = 0.99'
All Time H.W. El. = 497.30

FIELD UNITS
F_i = 3500 psi
F_y = 60,000 psi (Reinf.)
F_s = 20,000 psi (Struct.)

PRESTRESSED UNITS
F_{ci} = 5000 psi (Spans 112)
F_{ci} = 4000 psi (Spans 142)
F_{ci} = 270,000 psi (RH Strands)
F_{ci} = 189,000 psi (RH Strands)
F_{ci} = 6000 psi (Span 3-36 Bms.)
F_{ci} = 5000 psi (Span 3-48 Bms.)
F_{ci} = 4600 psi (Span 3-36 Bms.)
F_{ci} = 4100 psi (Span 3-48 Bms.)

LOADING HS 20-44
Design Specification 1977 AASHTO #78 Interims
225 Allow 25% / 54% for future W.S.



GENERAL PLAN & ELEVATION
F.A. RTE. 600 OVER RICHLAND CREEK
F.A. RTE. 600 SECTION 1-1B
ST. CLAIR COUNTY
STA. 158+08.00 @ CHANNEL

FOR INFORMATION ONLY

REVISIONS	NAME	DATE

ILLINOIS DEPARTMENT OF TRANSPORTATION
EXISTING STRUCTURE PLANS

FAP ROUTE 600
SECTION 1-1BR-1
ST. CLAIR COUNTY

SCALE: VERT. _____
HORIZ. _____

DATE _____ DRAWN BY _____
CHECKED BY _____

PLOT DATE = 8/17/2006
PLOT SCALE = 50,000 / 1 IN.
REFERENCE = #REF*